

UPDATE: IDP CAMP IN UNMISS MALAKAL BASE, MALAKAL, SOUTH SUDAN

Analysis with WorldView-1 Data Acquired 17 February 2014 and WorldView-2 Data Acquired 6 December 2013 and 18 January 2014

Complex
Emergency

Production Date:
2/18/2014

Version 1.0

Activation Number:
CE20131218SSD



This map illustrates satellite-detected areas of IDPs in the UNMISS base at Malakal as seen by the WorldView-1 and WorldView-2 satellites on 17 February and 18 January 2014. Fleeing outbreaks of violence, a portion of the UNMISS compound was in use by IDPs, occupying more than 8.3 ha as of 18 January 2014. Imagery acquired on 17 February shows that the IDP camp extent has increased compared with the previous UNOSAT analysis and the total area of IDPs occupies 11.1 ha. Imagery also shows that shelters are being installed outside the UNMISS base entrance. Note that IDP occupied areas include improvised shelters and, in some cases, administrative support and other structures. This is a preliminary analysis and has not yet been validated in the field. Please send ground feedback to UNITAR / UNOSAT.

LEGEND

- UNMISS Base Boundary (approx.)
- Secondary Road
- Trail
- IDP Settlement Extent (18 January 2014)
- IDP Settlement Extent (17 February 2014)

Map Scale for A3: 1:4,000
0 10 20 40 60 80 100 Meters

Satellite Data (1): WorldView-1
Imagery Dates: 17 February 2014
Resolution: 50 cm
Copyright: DigitalGlobe
Source: US Department of State, Humanitarian Information Unit, NextView License
Satellite Data (2): WorldView-2
Imagery Dates: 18 January 2014
Resolution: 50 cm
Copyright: DigitalGlobe
Source: US Department of State, Humanitarian Information Unit, NextView License
Satellite Data (3): WorldView-2
Imagery Dates: 6 December 2013
Resolution: 50 cm
Copyright: DigitalGlobe
Source: US Department of State, Humanitarian Information Unit, NextView License

Road Data : Google Map Maker / OSM / ESRI
Other Data: USGS, UNCS, NASA, NGA
Analysis : UNITAR / UNOSAT
Production: UNITAR / UNOSAT
Analysis conducted with ArcGIS v10.1

Coordinate System: WGS 1984 UTM Zone 36N
Projection: Transverse Mercator
Datum: WGS 1984
Units: Meter

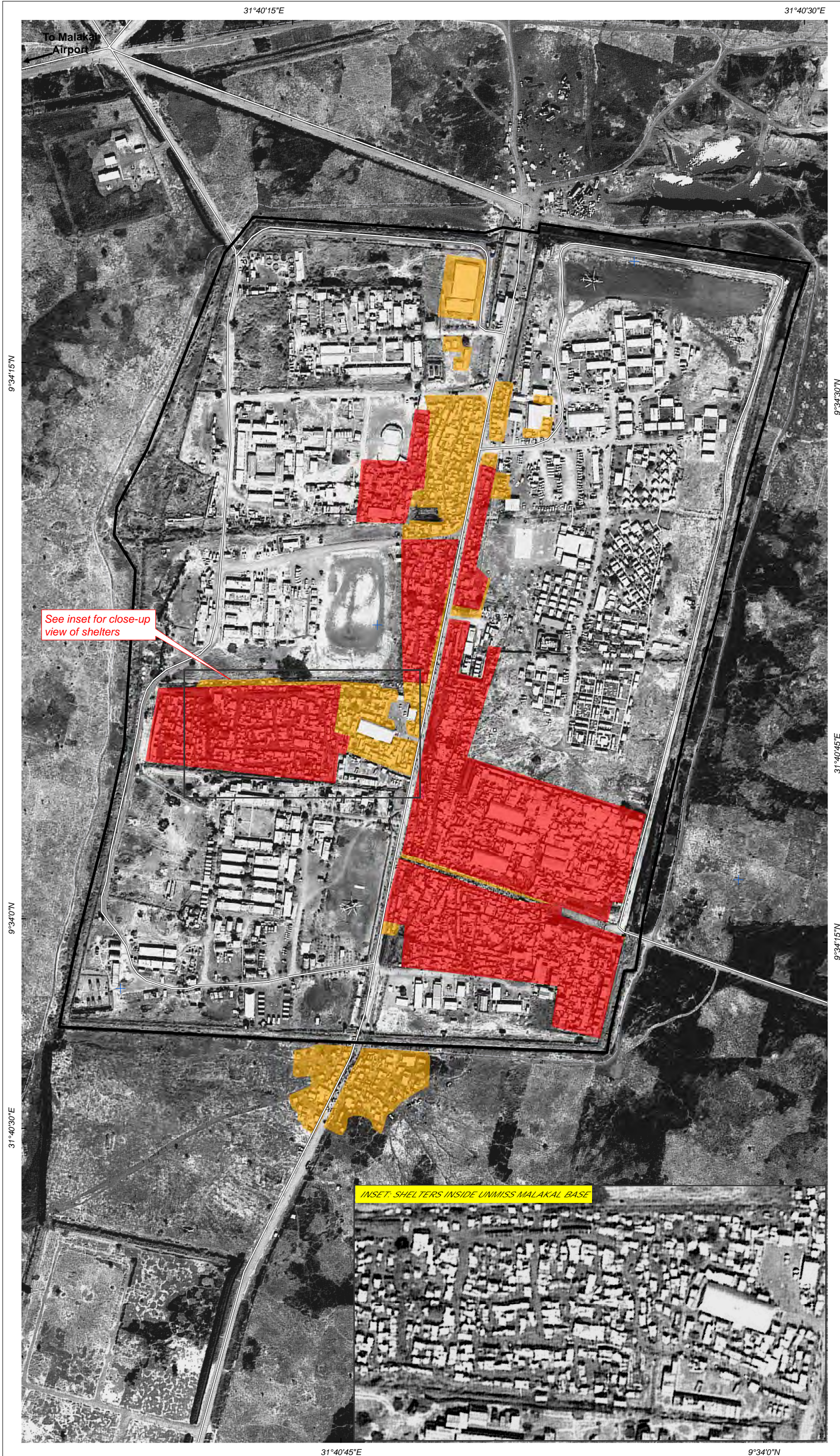
The depiction and use of boundaries, geographic names and related data shown here are not warranted to be error-free nor do they imply official endorsement or acceptance by the United Nations. UNOSAT is a program of the United Nations Institute for Training and Research (UNITAR), providing satellite imagery and related geographic information, research and analysis to UN humanitarian and development agencies and their implementing partners.

This work by UNITAR/UNOSAT is licensed under a Creative Commons Attribution-NonCommercial-ShareAlike 3.0 Unported License.



UNOSAT

Contact Information: unosat@unitar.org
24/7 Hotline: +41 76 487 4998
www.unitar.org/unosat



INSET: SHELTERS INSIDE UNMISS MALAKAL BASE