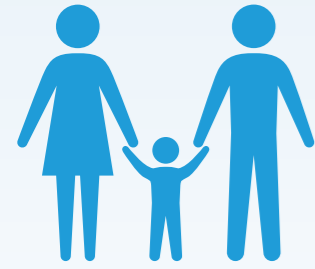


MUNICIPAL PROTECTION PROFILE: BALOI, LANA DEL NORTE

Armed Confrontations and Displacement in Marawi (AFP vs Maute)

Quick Protection Profile

BASIC INFORMATION



58,383
Population

21
Barangays

Meranaw
Majority

90.98km²
Area size

Meranaw
Main Language

3rd
Income Class (annual income between PHP 35 million and PHP 44.9 million)

SERVICES AVAILABLE PRIOR TO THE CRISIS

EDUCATION HEALTH SOCIAL WELFARE/ SOCIAL PROTECTION

27 DAY CARE CENTERS

1 Provincial Hospital Annex

4P_s

25 PRIMARY/ ELEMENTARY SCHOOLS

21 Barangay Health Stations

PANTAWID PAMILYANG PILIPINO PROGRAM (4P'S)

2 SECONDARY SCHOOLS

1 Maternal Care Package Center

BIRTH REGISTRATION

2 Private owned birthing centers

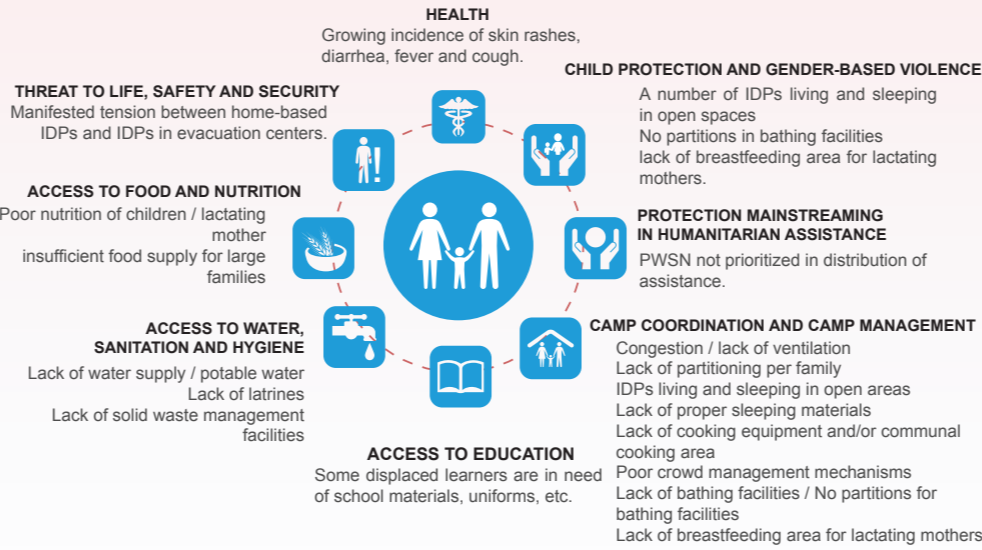
ECONOMIC SERVICES

- Balo-i Muslim-Christian Movement for Peace: Trainings on sustainable agriculture
- Globe Papers Industry: Industrial paper production
- National Power Corporation (Agus HEP 4 and 5): Power
- Newtech Pulp: Pulp manufacturing

- Municipal LGU (Municipal Agriculturist's Office): Business start-up and training, Support to cooperatives
- ASA Philippine Foundation: Loans without collateral
- Private Pawnshops: Loans and money transfers
- Balo-i Muslim-Christian Movement for Peace Serviamus Foundation, Inc.: Micro-finance for poor families

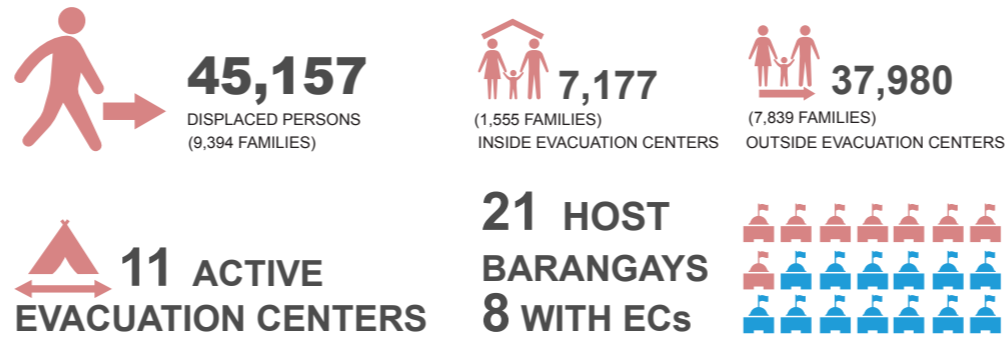
- Public markets (2): Wholesale and retail of consumable and non- consumable products
- SMEs: Wholesale and Retail
- Agricultural mills: Agro-industrial services
- Greater Bank of the Philippines: Banking Services
- CARD, Inc.: Micro-finance

MAJOR PROTECTION ISSUES RECORDED SINCE 27 JUNE 2017



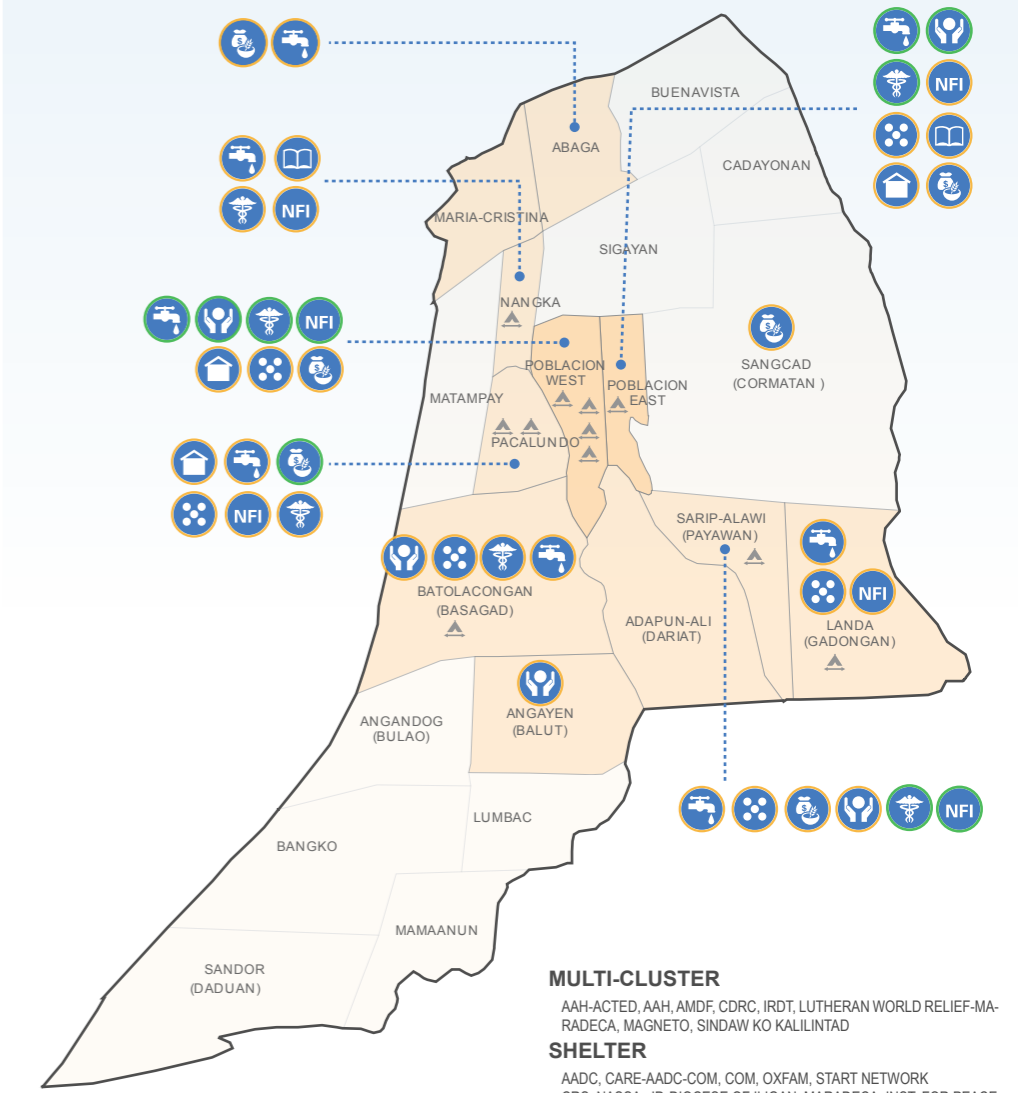
DISPLACEMENT

SOURCE: DROMIC REPORT AS OF 11 JULY 2017



HUMANITARIAN RESPONSE MAP

SOURCE: OCHA 3W AS OF 05 JULY 2017



LOCATION MAP



Photo credit: Hayanie Shiek Solaiman | MSWDO Baloi volunteer

The Quick Municipality Protection Profile aims to provide a snapshot of the basic demographics, absorptive capacity and general situation of host municipalities affected by the Marawi Crisis. This may be used as a starting point for information and analysis that can help humanitarian agencies, policy makers and other stakeholders concerning their emergency response. The information reported in the Quick Municipality Profile has been received from members of the Protection Cluster responding to the crisis. Consequently, the information will be updated on a regular basis as more information is received from members. Although efforts are made to verify the data, the Protection Cluster takes no responsibility for the incompleteness or inaccuracy of the information. The information provided in this Municipality Profile does not necessarily reflect the views of UNHCR or any individual member of the Protection Cluster.