

IDP Situation in Nigeria - Prevention, Protection and Solutions



Presentation by:

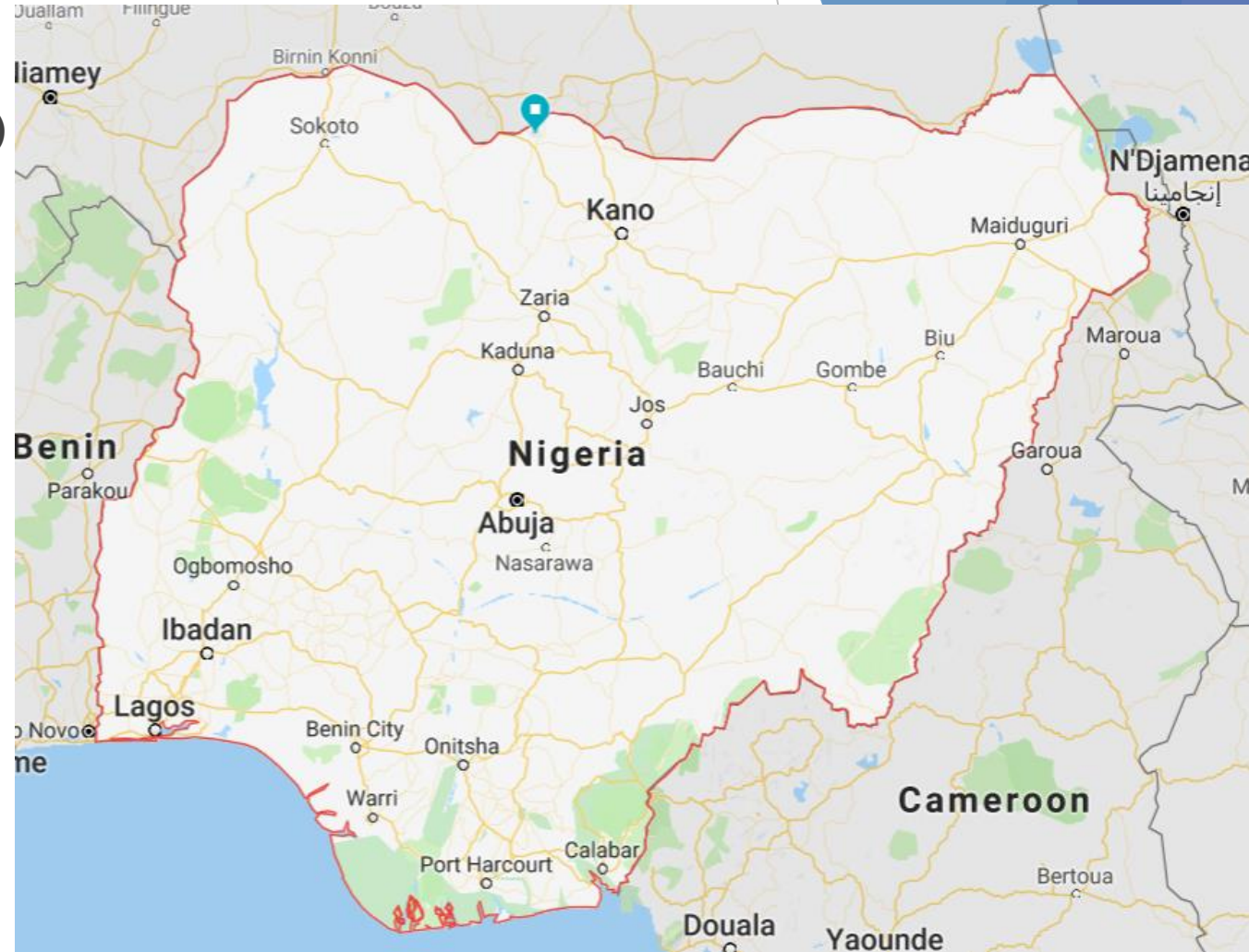
Abdullahi Abubakar

National Emergency Management Agency (NEMA)

4th March 2019

Nigerian Population Statistics

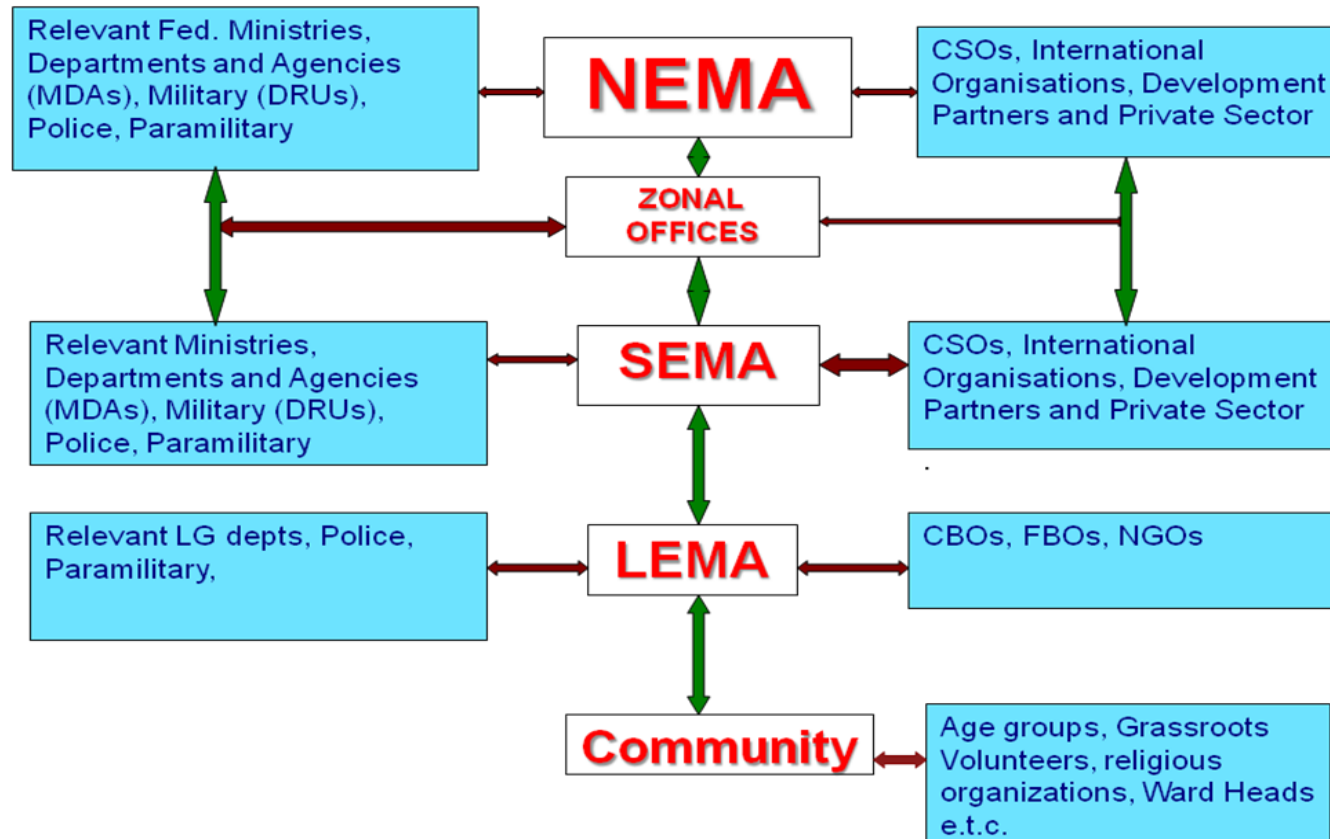
- ▶ Population: 190,900,000 (2017)
- ▶ IDP (conflict) Population: 2,026,602 (Oct 2018)
- ▶ IDP (Flood) Population: 722,741 (Oct 2018)



National Emergency Management Agency (NEMA)

Established in 1999 NEMA is responsible for the management of disaster and coordination of national disaster response.

Coordination framework of NEMA



Causes of Displacement in Nigeria

- ▶ Communal Clashes
- ▶ Flood
- ▶ Insurgency

A History of Displacement in Nigeria

▶ 2012 - Floods

- ▶ Unprecedented floods in 33 states
- ▶ Affected a over 7 million people were affected and over 2 Million people were displaced.
- ▶ This lead to the development of the national contingency plan and adaption of sectorial response in disasters
- ▶ Establishment of NEMA Situation room: The Disaster Situation working group was established at the pick of the flood disaster that ravaged about 32 states across the country in 2012, this action is informed by the need for urgent information and immediate intervention by NEMA management. However, the group was initially limited to gather data on flood disaster only but now works extensively to cover other areas of disaster

▶ 2014 - Insurgency

- ▶ The North Eastern States and some states in Nigeria witnessed unprecedented insurgency and conflict from 2009 to date, leading up to the declaration of state of emergency in Borno, Yobe and Adamawa States in 2013. The escalation of violence caused by the Boko Haram insurgency led to an increase in the number of Internally Displaced Persons (IDPs), especially in Adamawa, Bauchi, Borno, Gombe and Taraba States with a total of 868,335 IDPs estimated to have been displaced by December 2014.

Types of Settlements and long term effects

- ▶ NEMA identified Three types of IDP settlements which are as follows:
 - ▶ Formal Camps
 - ▶ Informal Camps/Settlements
 - ▶ Host communities

NEMAs Approach Displacement

- ▶ NEMAs response to dealing with the IDP was adapted from the National Contingency Plan which made use of the Sectorial approach as such the following key sectors were establish:
 - ▶ WASH
 - ▶ Food and Nutrition
 - ▶ Health
 - ▶ Education
 - ▶ Protection
 - ▶ Shelter and NFI
 - ▶ CCCM

Displacement Tracking Matrix

- ▶ In an effort to ensure accurate, uniform and acceptable IDP data collection NEMA and IOM collaborated on the DTM exercise since round 1 of the DTM, The DTM is currently on round 25
- ▶ The DTM which started with 5 (excluding Borno) North eastern states in Nigeria, it was expanded from by round 9 to cover seven State of the North West and 6 States of the North Central and the FCT Abuja.
- ▶ The DTM exercise was however revised to cover only 6 states of the North east due to return of normalcy and subsequent return of the IDPs back to their homes.
- ▶ Data sources - State Emergency Management Agency(SEMA) , Data collectors, camp profiling, NRCS, local informants.

DTM Methodology

Local Government area (LGA) level location assessment

Ward/village level location assessments

Site - Camp assessments



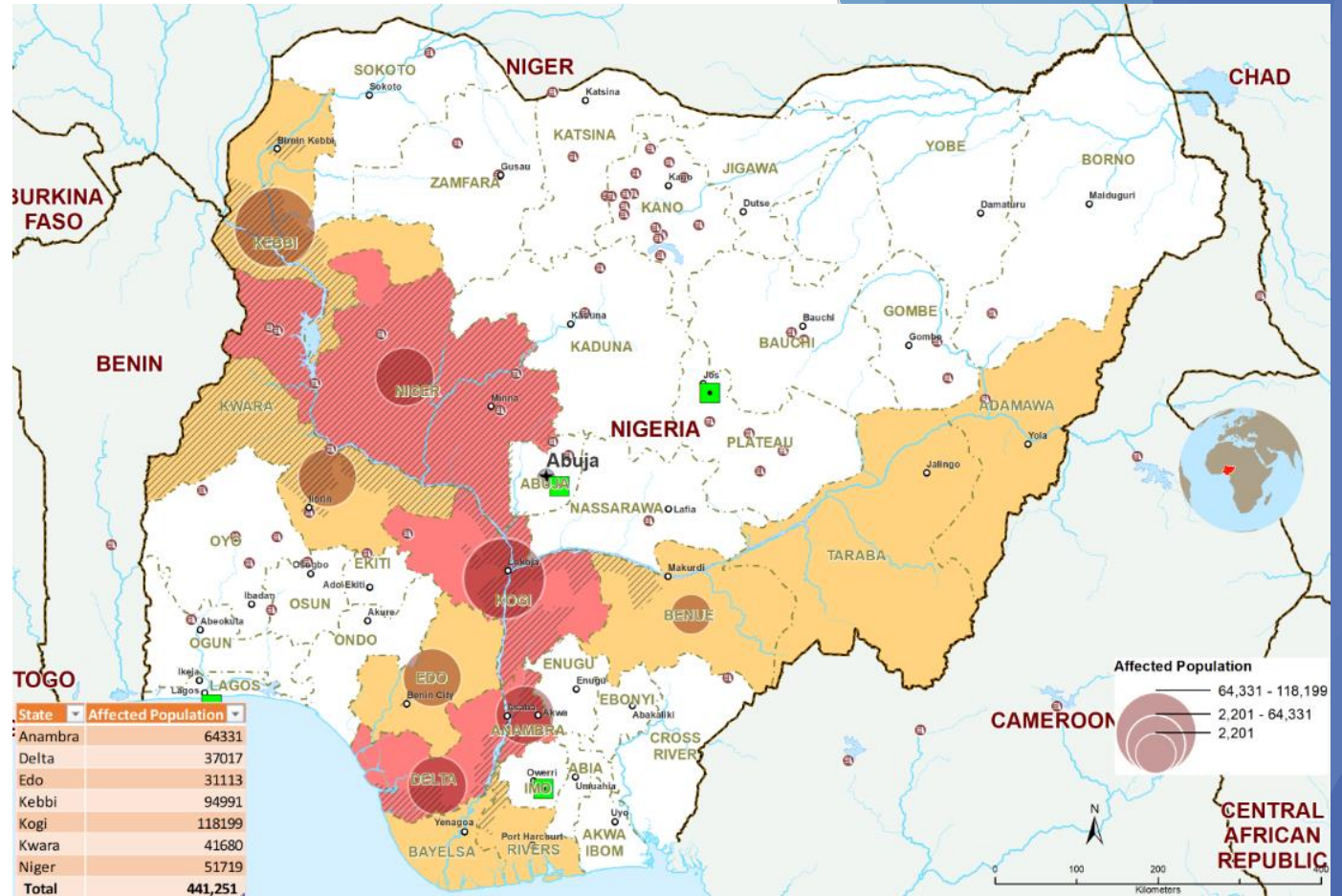
NEMA and IOM staff during DTM in Bauchi State



NEMA and IOM staff with community leader in Bauchi State

2018 Flood

- ▶ 12 Frontline states
- ▶ 129 Local Government Area Affected
- ▶ Affected Population 2,321,592
- ▶ IDP Population 722,741 (Oct 2018)
- ▶ Biometric profiling in camps
- ▶ Short term camps
- ▶ Affected population/population in need



Protection

- ▶ Unaccompanied Minors
 - ▶ Adoptions
 - ▶ Reunion with Relatives
- ▶ Safe returns and re-displacements
- ▶ Community Stigmatization
- ▶ Over concentration of Efforts



Data Collection Issues

- ▶ Data collection and Unmet Needs
- ▶ Economic Migrations by IDPs
- ▶ Exaggerated figures

Solutions

- ▶ Resettlement
- ▶ Comprehensive IDP data and information
- ▶ Responding to needs
- ▶ IDPs and livelihood solutions
- ▶ Inclusive Data collection coverage

Thank You