

Event Tracking Report

16 February 2021



DTM
IOM DISPLACEMENT
TRACKING MATRIX
BANGLADESH



**BANGLADESH
DISPLACEMENT
MANAGEMENT
CLUSTER**
SUPPORTING DISPLACED COMMUNITIES

Kulna Division—Khulna District—Koyra and Paikgachha Upazila—8 Unions—44 Locations (villages)—4,318 IDPs

Overview

The IOM Displacement Tracking Matrix (DTM) team, in partnership with the Bangladesh Red Crescent Society (BDRCS) conducted an Event Tracking assessment in Khulna district from 20 – 27 January 2021. The assessment was coordinated with the Ministry of Disaster Management and Relief (MoDMR) and the United Nations Resident Coordinator's Office (RCO) in order to verify reports of large-scale, protracted displacement in eight unions across Koyra and Paikgachha Upazilas in the aftermath of Cyclone Amphan.

DTM Event Tracking assessments are designed to be rapidly deployable to map instances of displacement in short dedicated reports to provide a snapshot overview of the displacement situation.

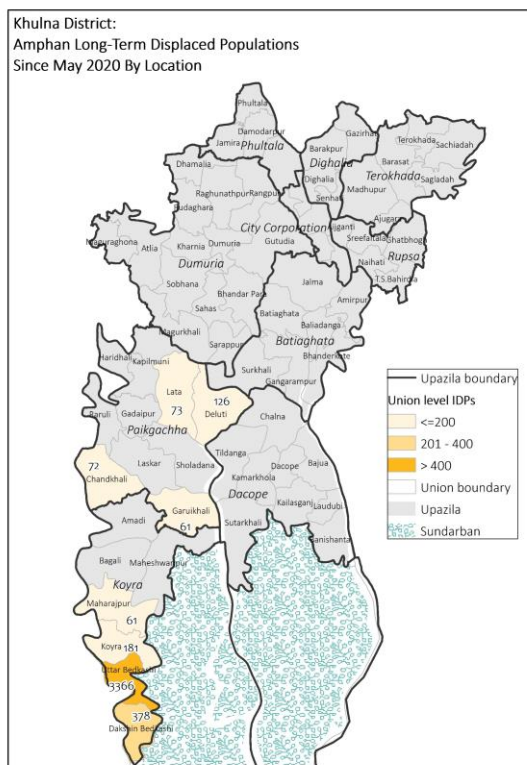
Methodology

A team of enumerators was deployed to cover 156 villages/locations across eight unions. Data was collected from direct site visits; 481 key informant interviews (KII) with community representatives, local authorities and humanitarian partners; and 82 focus group discussions (FGD) with both host communities and displaced communities. The findings were triangulated to ensure accurate, actionable and up-to-date information to the best of DTM's knowledge. All data reflects the situation at the time of the assessment and complete datasets with location level information are available upon request.

Findings

Over the assessment period, an estimated **4,318 individuals (932 households)** were reported to remain displaced across the eight

Unions visited in Shyamnagar and Assasuni Upazilas. Approximately 94% (877 households) have taken residence in temporary shelters on embankments in hazard prone areas, whilst the remaining 6% (55 households) are living in emergency evacuation shelters. The teams reported that prolonged displacement was mainly due to damaged river embankments, which has resulted in flooding and salinity intrusion that has destroyed shelters and rendered previously cultivable land infertile, resulting in loss of livelihoods. Displaced households reported that they had resorted to other livelihoods such as rickshaw pulling or manual labour to support their families. Some of the coping mechanisms noted included selling livestock below market price and taking out loans. There were also reports of higher instances of child marriage due to the loss of livelihoods and increased socio-economic vulnerability.



Map Production: 02/14/2021; Admin Boundary: LGED, Bangladesh; Disclaimer: This map is for illustration purposes only. Names and boundaries on this map do not imply official endorsement or acceptance by IOM.

Location of displacement (Upazila)	Location of displacement (Union)	Number of displaced individuals (IDPs)	Number of displaced households (HHs)	Number of assessed locations (villages) with IDPs
Koyra	Dakshin Bedkashi	378	91	7
	Kayra	181	46	5
	Maharajpur	61	16	4
	Uttar Bedkashi	3,366	693	5
Paikgachha	Chandkhali	72	15	5
	Deluti	126	33	7
	Garuikhali	61	17	6
	Lata	73	21	5
Grand Total		4,318	932	44

Event Tracking Report

16 February 2021

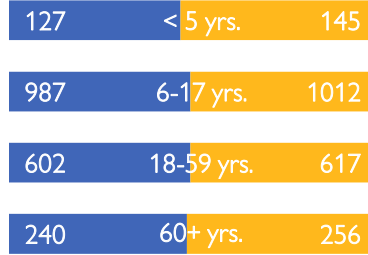
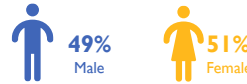
Kulna Division—Khulna District—Koyra and Paikgachha Upazila—8 Unions—44 Locations (villages)—4,318 IDPs

Koyra Upazila, Khulna

Data collection: 20 – 27 January 2021

TRIGGER FOR MOVEMENT	Cyclone Event
# of Locations (villages) assessed with IDPs	21
# of HHs displaced	846
# of IDPs	3,986
Nature of movement	Spontaneous
Main settlement type for majority of HHs displaced	Temporary shelter on embankments

DEMOGRAPHIC BREAKDOWN (Total # of IDPs=3,986)

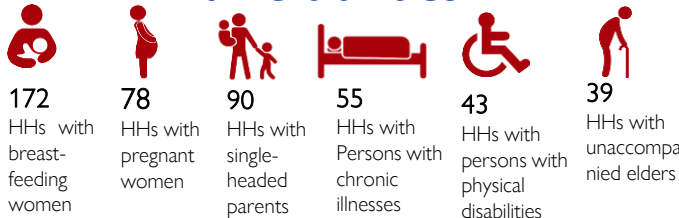


HUMANITARIAN NEEDS

- AVAILABLE
- INSUFFICIENT
- UNAVAILABLE
- UNKNOWN

HEALTH	
WATER	
SANITATION	
PROTECTION	
FOOD	
SHELTER	
NON-FOOD ITEMS	

Vulnerabilities



*Information source: Direct visits, Focus Group Discussions and Key Informant Interviews

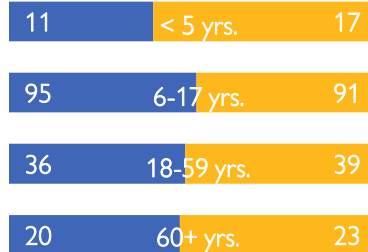
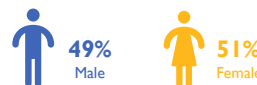
*Period Covered: May – December 2020

Paikgachha Upazila, Khulna

Data collection: 20 – 27 January 2021

TRIGGER FOR MOVEMENT	Cyclone Event
# of Locations (villages) assessed with IDPs	23
# of HHs displaced	86
# of IDPs	332
Nature of movement	Spontaneous
Main settlement type for majority of HHs displaced	Temporary shelter on embankments

DEMOGRAPHIC BREAKDOWN (Total # of IDPs=332)

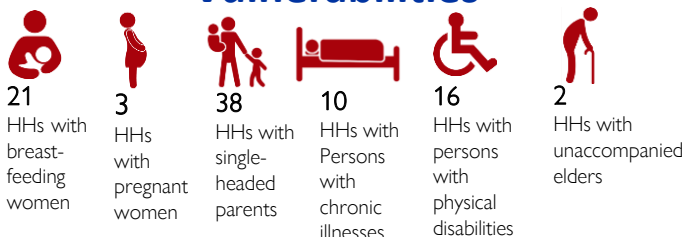


HUMANITARIAN NEEDS

- AVAILABLE
- INSUFFICIENT
- UNAVAILABLE
- UNKNOWN

HEALTH	
WATER	
SANITATION	
PROTECTION	
FOOD	
SHELTER	
NON-FOOD ITEMS	

Vulnerabilities



*Information source: Direct visits, Focus Group Discussions and Key Informant Interviews

*Period Covered: May – December 2020

As a component of DTM, IOM teams have established Mobility Tracking (MT) assessments in Khulna through a district-wide exercise. Designed to be conducted in regular intervals, MT methodology involves the update of a comprehensive migrant baseline. Event tracking assessments have been adapted to monitor new displacements that occur between MT rounds-utilizing a more rapid and localized assessments to report on IDP figures.

DTM ASSESSMENTS
CONDUCTED BY



DTM ASSESSMENTS
SUPPORTED BY:



European Union
European Regional
Development Fund