

Collective Shelter Management in Latin America and the Caribbean



**RESPUESTA A
VENEZOLANOS**
Plataforma de Coordinación
para Refugiados y Migrantes
de Venezuela



Shelter Sector

Venezuela - Background

- Political, human rights and socio-economic developments in Venezuela have led to:
 - 5.4 million refugees and migrants from Venezuela outside country of origin
 - 4.6 million in the region
 - 1 million with irregular status



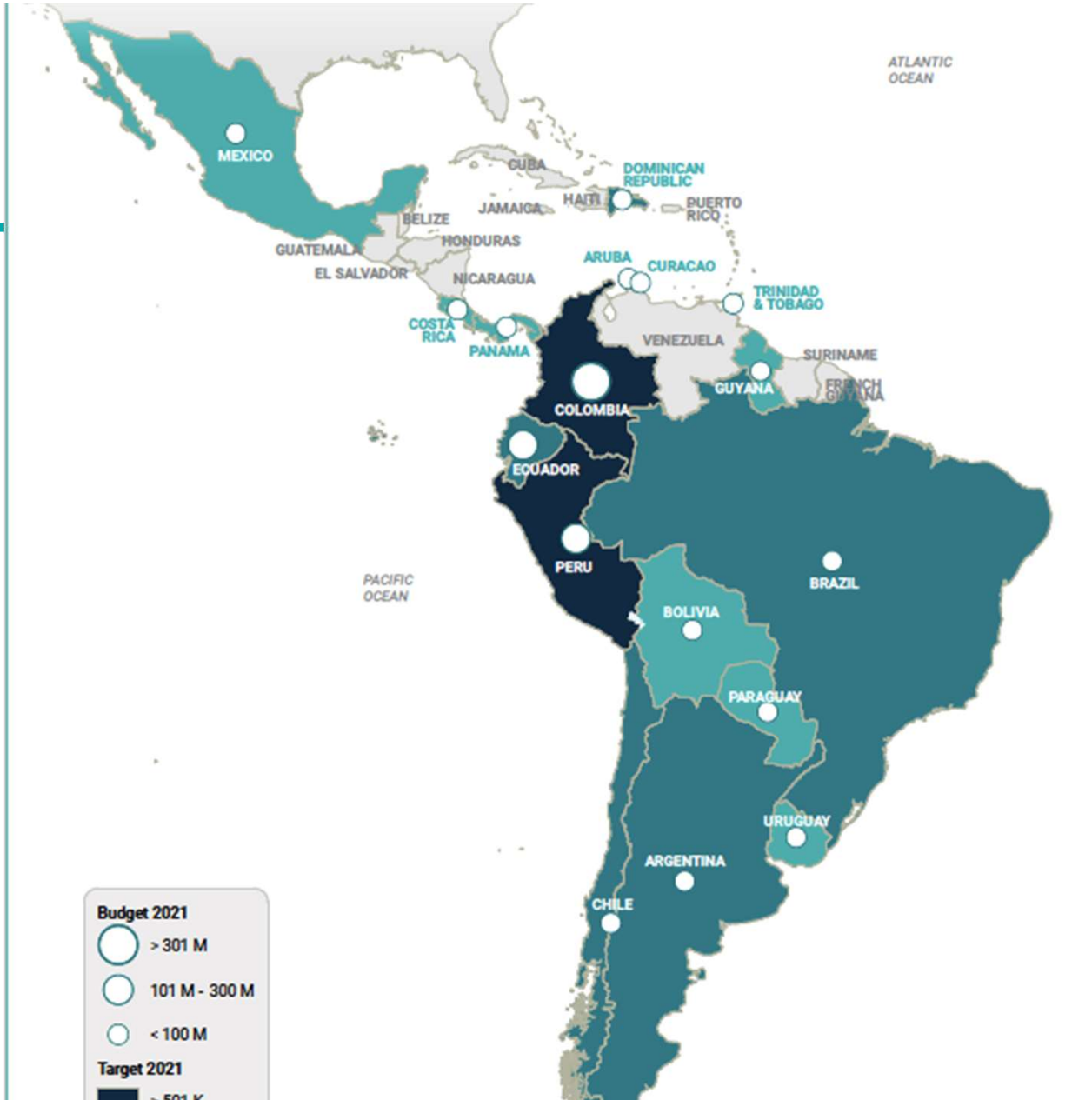


Shelter Sector



What is R4V?

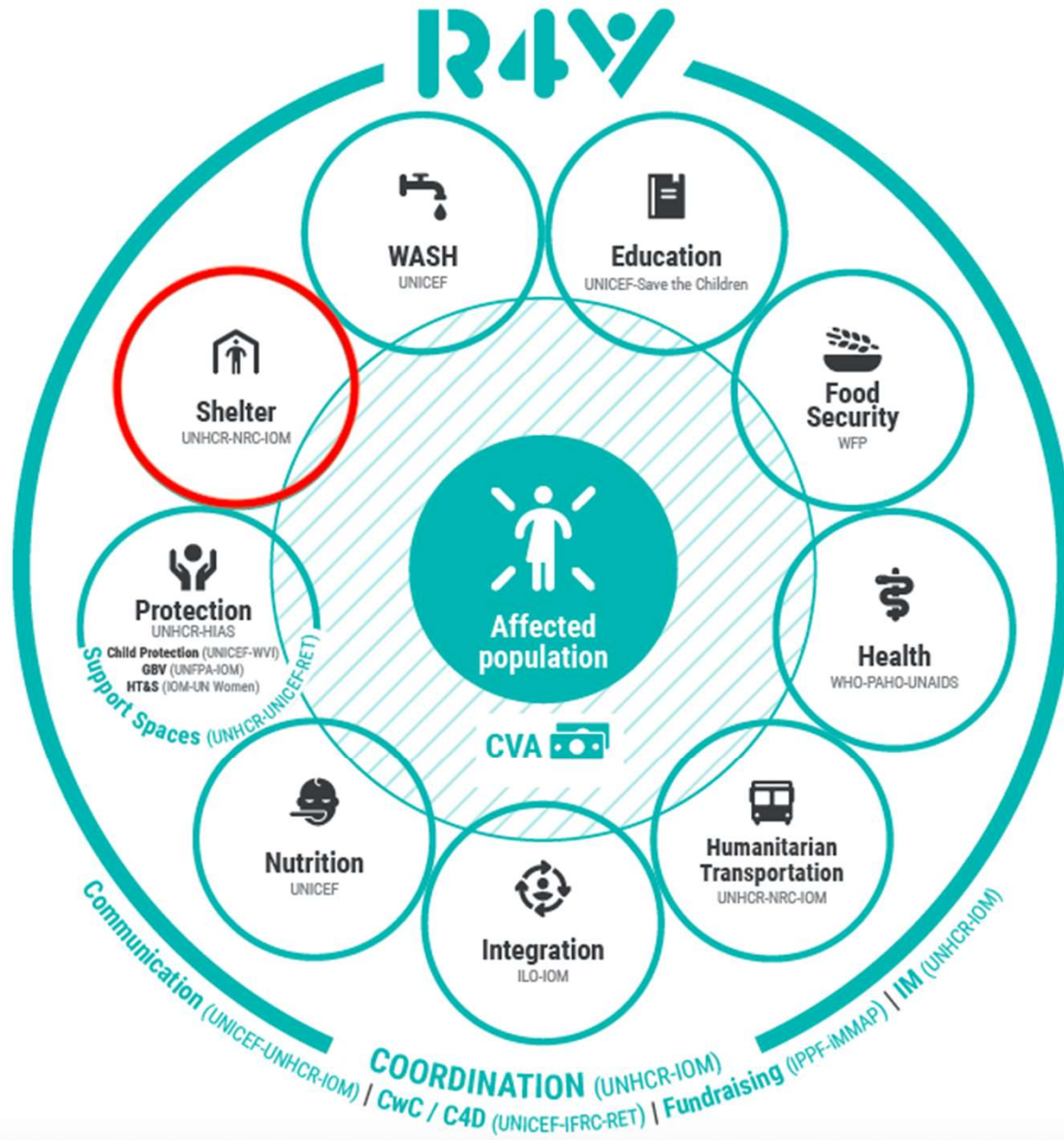
- Regional R4V Platform
- Includes participation of 259 implementing partners
- 17 different countries across the region
- *(Brazil, Chile, Colombia, Ecuador, Peru, Aruba, Curacao, the Dominican Republic, Guyana, Trinidad and Tobago, Panama, Costa Rica, Mexico, Argentina, Uruguay, Bolivia, Paraguay)*





R4V

R4V
RESPONSE FOR
VENEZUELANAS





Shelter Sector

Collective Shelter Types

Types of Temporary Collective Shelter Solutions ¹⁴:



URBAN



RURAL



Planned reception facilities



Self-settled sites



Collective centers



Emergency / First line Transit sites



Shelter Sector

Collective Shelter Types



Example of collective shelter



© VICTORIA SERVILHANO/MSF

Transit site-Roraima State, Brazil



Shelter Sector



Organization of Standard Operating Procedures

1. Collective Shelter Reception and Management
2. Community Participation and Representation
3. Coordination, Service Monitoring, Information Management, Maintenance and Rehabilitation
4. Strategic Exit Planning
5. Transitional and Durable Solutions





Collective Shelter Reception and Management



Key Steps in Setting Up a Collective Shelter

Steps	Activity	Technical Tools
STEP 1	Introduce need for opening a collective shelter facility to relevant counterparts, potential NGOs in area already responding to affected population	<ul style="list-style-type: none">• Using data from needs assessments
STEP 2	Selection of land or structure for the establishment of a collective shelter	<ul style="list-style-type: none">• Considerations for selecting a suitable facility• Selection of Plot Checklist
STEP 3	Agreements or leases with the owners of the land or buildings used as collective shelters	<ul style="list-style-type: none">• Protocols and Documentation checklist• HLP Model Decree/Edict/Executive Order for protection of housing rights during COVID-19
STEP 4	Assistance model, Reception Process and Reception Lists	<ul style="list-style-type: none">• Example of registration form
STEP 5	Basic Services Planning and Set Up	<ul style="list-style-type: none">• Planning and design of site• Protection considerations in Practice• Considerations for GBV Mainstreaming• Maintenance and Rehabilitation Works (<i>see guidance in Section "Coordination, Service Monitoring, Information Management and Maintenance and Rehabilitation"</i>)



Protection Considerations

- Clarify whether shelter will receive persons with special needs (*UASC, GBV survivors, trafficking victims, LGBTQ+, etc.*)
- Establish vulnerability index and criteria to determine access
- Sex-segregated sanitary facilities, and gender-neutral facilities with lockable door from inside
- Ensure accessibility of communal services for PWD (*kitchen and laundry spaces on first floor of common spaces*)



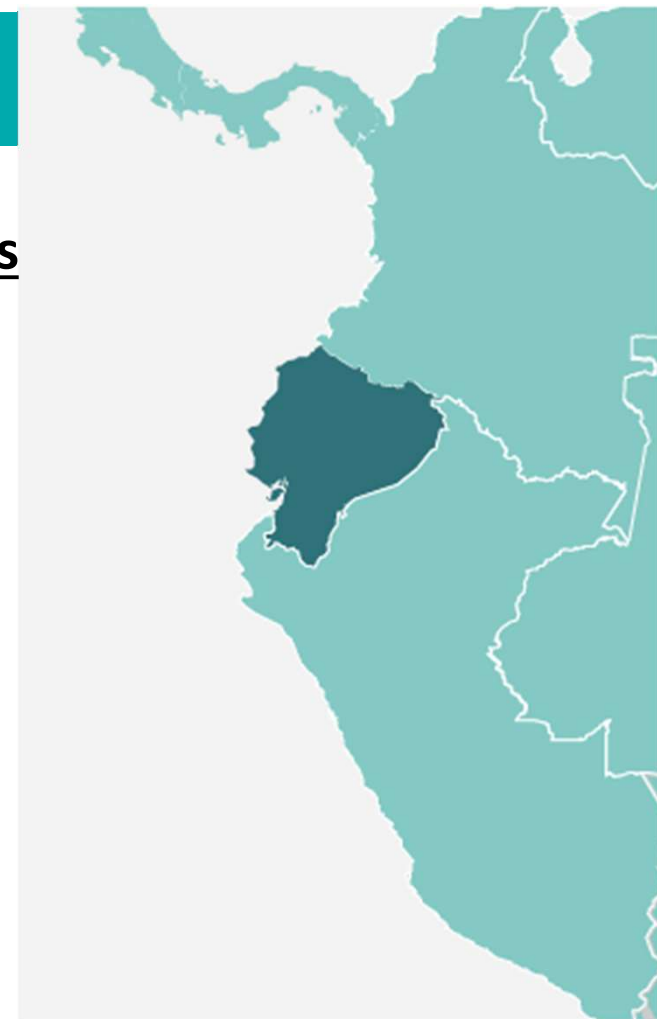
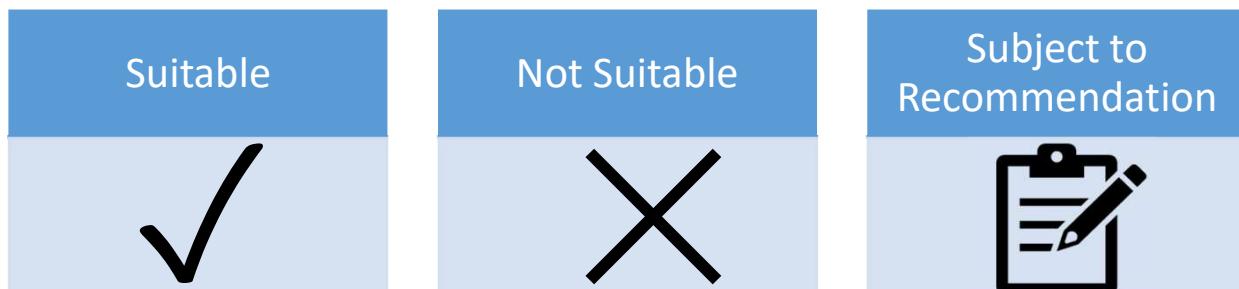


Shelter Sector

Experience from the Region: *Ecuador*

Better Planning: Developing Scenarios and Forecasting Resources

Database of Land Suitability and Infrastructure





Community Participation and Representation



Shelter Sector

Step	Action	Example
Integrating Participation	<ul style="list-style-type: none">• Create “Rules and Regulations” for site and common spaces, in collaboration with affected population, share during reception and post around collective shelter to make it visible and validate community’s priorities	<ul style="list-style-type: none">• Collective Shelter Shared Living Space Regulations
Providing Information	<ul style="list-style-type: none">• Post map of local area in shelter, highlight important locations (health, food services, support centers, etc)	<ul style="list-style-type: none">• Information Wall/ Posting Board
Two-Way Feedback Mechanisms	<ul style="list-style-type: none">• Basic questionnaire/rating system upon exit (regarding services, bathrooms, showers, kitchens, etc)	<ul style="list-style-type: none">• Suggestion Box



Shelter Sector

Example of Collective Shelter Shared Living Space Regulations⁵⁴

Health	Co-Living Space	Bathroom Cleaning	Security
Do not dump trash in or near water sources	Respect the purpose and the use of the common areas, shared spaces, kitchen and dining spaces	Take care of personal hygiene	Do not allow unaccompanied boys or girls into kitchen common spaces
In case of infectious contagious diseases, follow treatment and medical indications to protect yourself and others	Do not consume drinks alcoholic, or drug substances	Dispose of trash in the proper waste facilities	Avoid leaving objects around, especially glass or metal



Shelter Sector

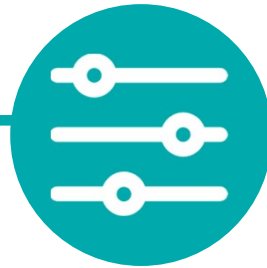


Experience from the Region: *Trinidad and Tobago*

Promoting Communication in Multiple Ways

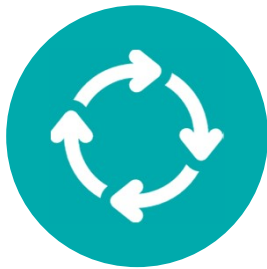
- Broadcast listings based upon vulnerability
- Direct communication links for clarifications
- Same information shared through posters where there is low connectivity to expand reach





Information Management

Coordination, Service Monitoring, IM, Maintenance and Rehabilitation



Coordination and Service
Monitoring



Maintenance and Rehabilitation



Shelter Sector

Coordination

Should Include	To Achieve
<ul style="list-style-type: none">• Municipal government• Property owners and neighbors• Host communities• Refugees and migrants	<ul style="list-style-type: none">• Linkages of support networks for affected population on journey• Provide information so refugees/migrants can make better, informed decisions• Minimum Standards• Advocacy support to find durable housing solutions



Shelter Sector

Experience from the Region: Aruba

Coordination Expanding Income Generation Opportunities

- Female business-operating system in Aruba
- Use of coordination and social networks to amplify sales
- Reduce dependency on civil society and humanitarian organizations, promoting empowerment and community-led initiatives





Shelter Sector

Experience from the Region: *Ecuador*

Community-Led Maintenance and Rehabilitation

- Engagement of beneficiaries capacities to restore donated furniture in collective site
- Improvement of rooms and living conditions
- Hiring of host community members to support renovations
- Reduced tensions and promoted peaceful co-existence, sense of ownership and pride





Strategic Exit Planning

Avoiding Evictions

Criteria

Support

Residents should be informed of their eviction and measures taken to ensure adequate housing

- Cash for rent assistance
- Coach beneficiaries on negotiating fair housing agreements

After change in residence, beneficiaries are assisted by protection actors

- Change civil documentation to new address
- Connect to resources (legal) if linked to previous residence





Durable Solutions



Shelter Sector



Return



Local Integration



Resettlement



Shelter Sector

R4V
RESPONSE FOR
VENEZUELANAS

Questions?

Thank you!

¡Muchas gracias!