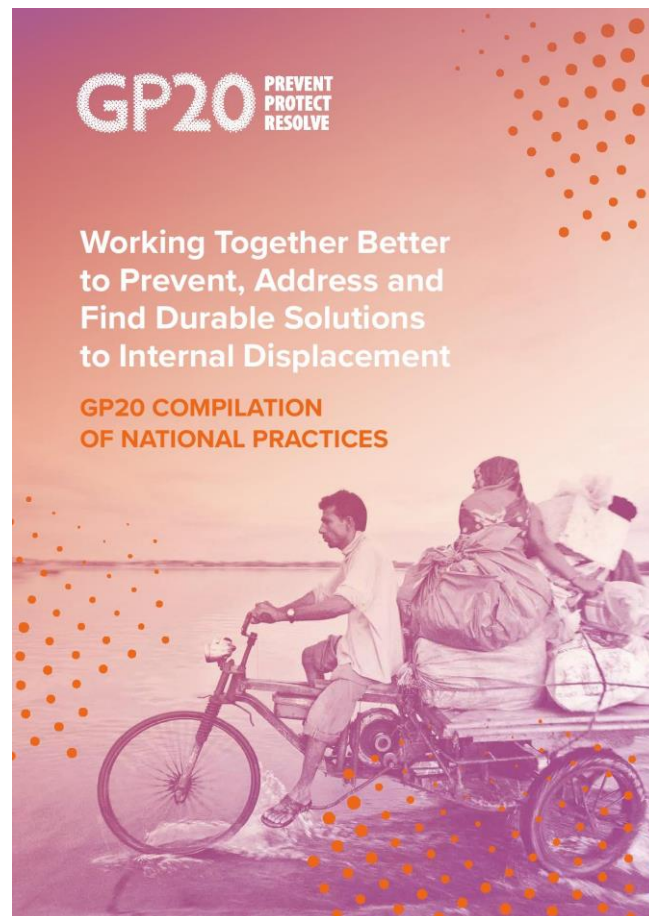




Ms. Nadine Walicki

GP20 Coordinator

GP20 Compilation of National Practices



Political will can be generated and sustained in numerous ways

- Data on internal displacement
- Advocacy campaigns
- International expert visits and technical support
- Incentive to be seen as an international and regional leader



Internally displaced people are part of the national population

- Citizens or residents with displacement-related needs
- Recognizes their rights and role as contributors to community
- State responsibility for their protection and assistance
- Avoid creating parallel structures



Conscious steps are needed to build trust with internally displaced people

- Speaking their language
- Careful selection of those who interact with the internally displaced
- Community leadership on identification of priorities
- Positive impact on policies and programming



Data is a powerful tool to identify, understand and address internal displacement

- Regular, longitudinal data collection and analysis to monitor IDPs' progress toward durable solutions over time
- Disaster and conflict situations
- Not only numbers of IDPs and their needs



Integrated approaches to internal displacement show promise for durable solutions

- Dedicated support in the UN Resident Coordinator's Office
- Bring together local and international actors from different constituencies
- Shared vision and common indicators to respond to the spectrum of IDPs' needs



Humanitarianism and beyond: more can be done to support government leadership

- Room for more action on development, peacebuilding, DRR, climate change impacts
- Bring together conversations and understand connections and differences
- Critical role of donors to help facilitate coherent, integrated and timely responses

