

REM1



The Philippines' DSWD-DROMIC Setting

IDP Data and Evidence to Prevent and Address Internal Displacement, Including to Ensure Durable Solutions

Mr. Clifford Cyril Y. Rivalal

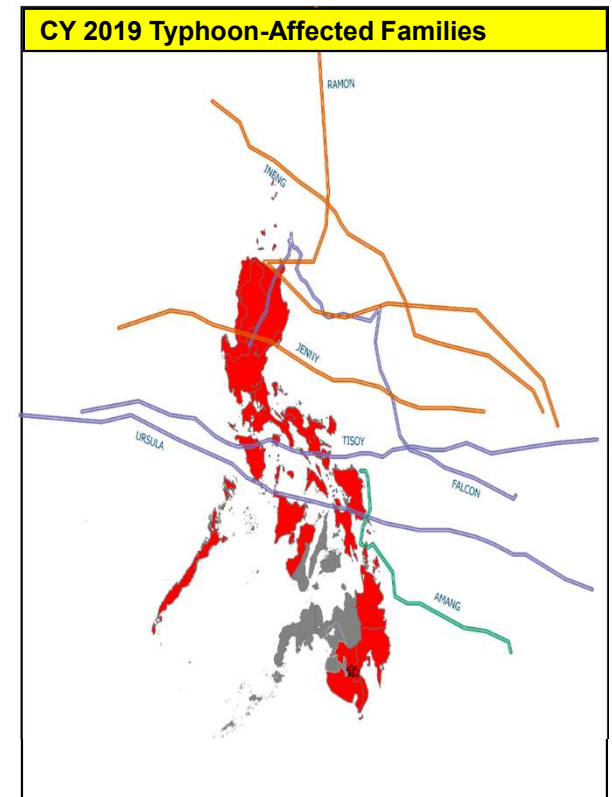
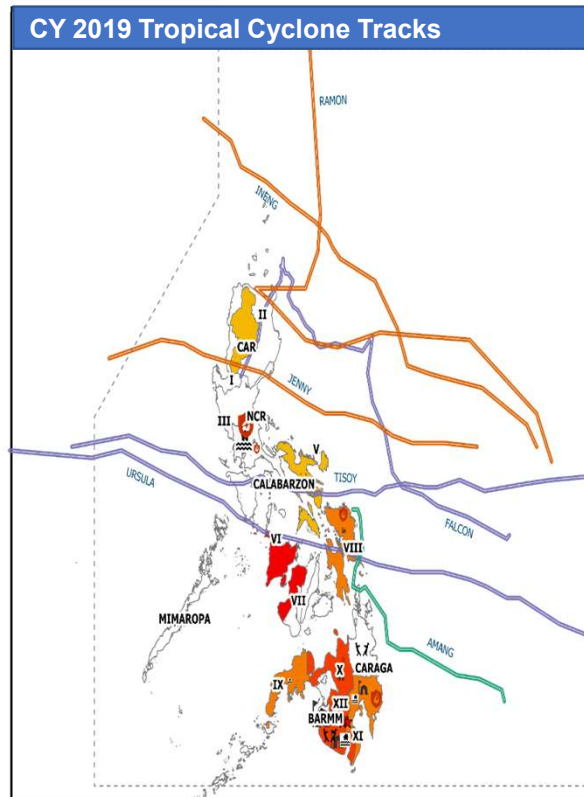
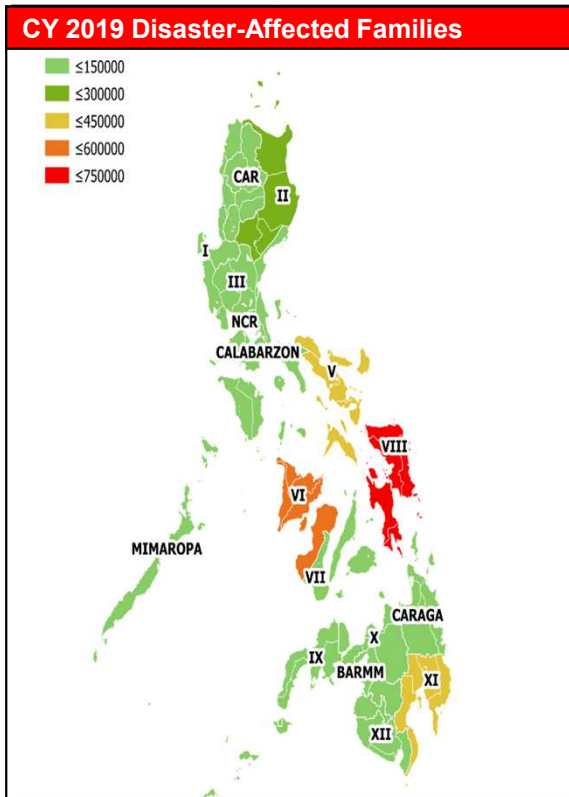
Director, Disaster Response Management Bureau
Department of Social Welfare and Development
Republic of the Philippines

Slide 1

REM1 Rey E. Martija; 21.07.2020



CY 2019 Country Disaster Risk Profile



284 Disaster Occurrences

2.57 Million Affected Families

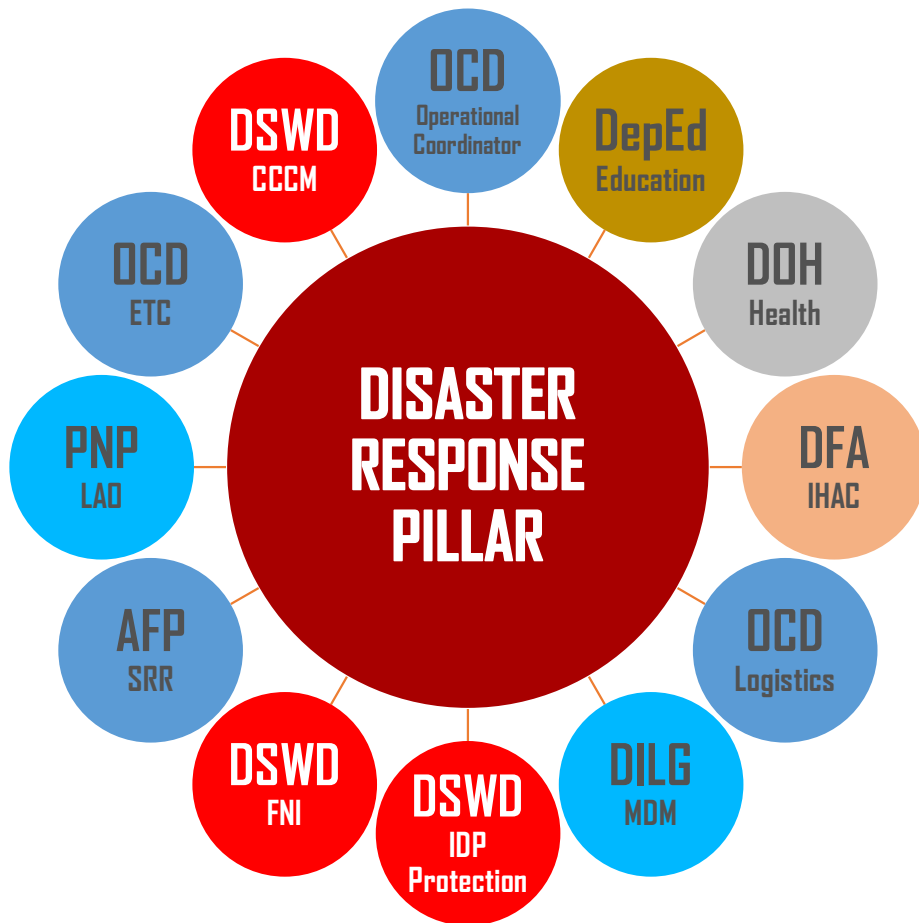
12.85 Million Affected Persons

7 Strong Tropical Cyclones

1.17 Million Homeless Families



The PDRRM Act of 2010 (RA 10121)



DISASTER RESPONSE PILLAR

Provide life preservation and meet the basic subsistence needs of affected population based on acceptable standards during or immediately after a disaster.



24/7 disaster monitoring and information center.

Central repository of all disaster data and information of the Department.

Generates data and information on affected and displaced population, evacuation sites, damaged houses and humanitarian relief aid by geographical location and types of disaster.





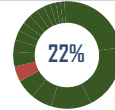
Predictive Analytics for Humanitarian Response (PAHR)

Making predictions on potential disaster events to prepare humanitarian response using mathematical theories, scientific processes and spatial technologies.

PROVINCE	EXPOSED POPULATION	REQUIRED NUMBER OF FFPS	COST (In PhP)
TOTAL	1,301,961	260,393	109,885,846.00
ALBAY	782,768	156,554	66,065,788.00
CAMARINES NORTE	115,764	23,153	9,770,566.00
CAMARINES SUR	235,029	47,006	19,836,532.00
CATANDUANES	7,047	1,409	594,598.00
MASBATE	35,745	7,149	3,016,878.00
SORSOGON	125,608	25,122	10,601,484.00



5.8 Million Population Count (PSA, 2015)



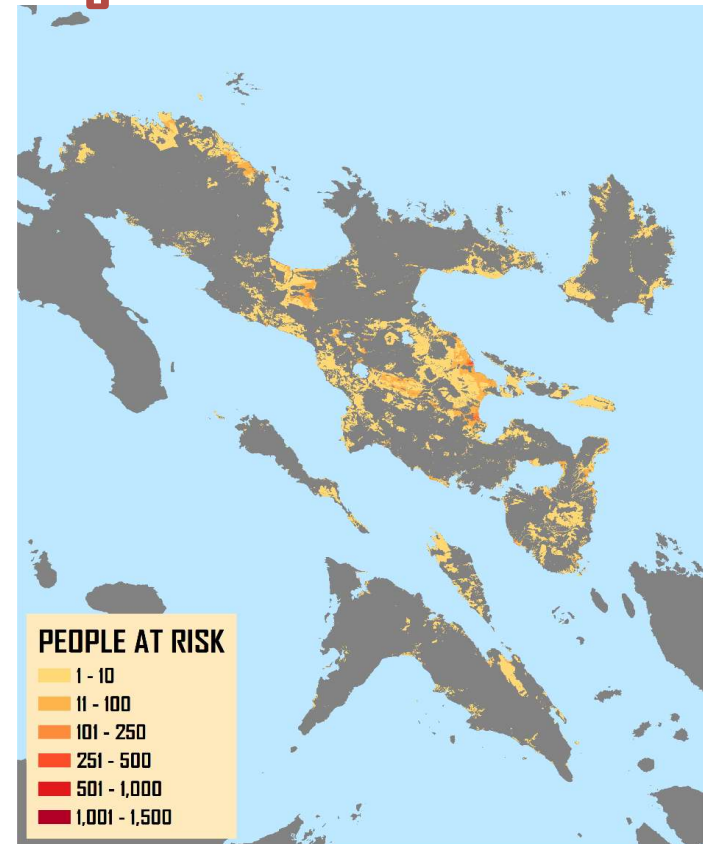
1.3 Million People Exposed to High Susceptibility Levels of Flooding and Landslide



71,556 Poor Families (DSWD, 2015)

Tool used to calculate relief resources for prepositioning based on existing social registry platforms of vulnerable population.

Region V





Durable Solutions for Disaster Recovery



Baseline data and information for durable solutions in the recovery and establishment of resilient communities.

- ✓ Comprehensive plan for the resettlement of displaced population in areas with high susceptibility to hazards.
- ✓ Specialized services and interventions for the vulnerable sectors.
- ✓ Social protection programs for disaster safety nets.
- ✓ Policy development and/or enhancement.
- ✓ Automated social registry of vulnerable population.



Visit us at our Virtual Operations Center @

dromic.dswd.gov.ph