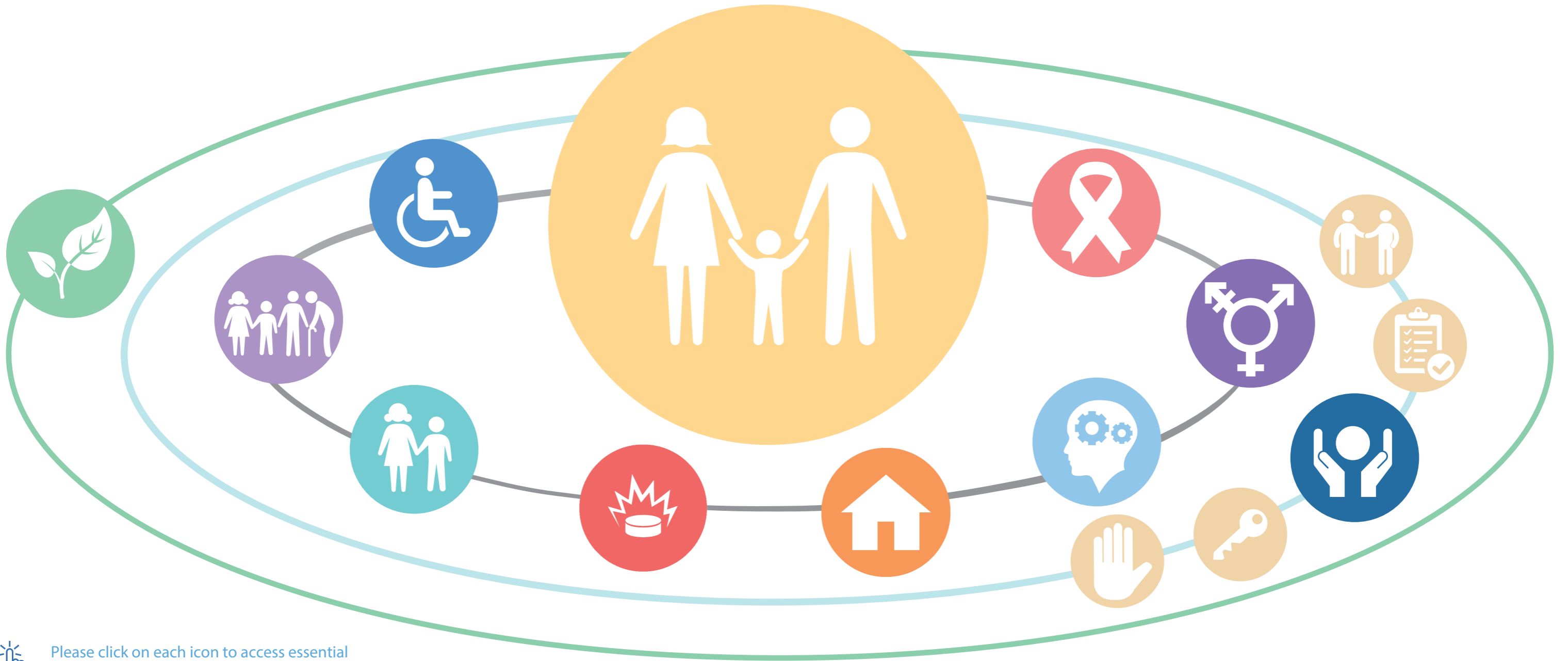



MAINSTREAMING CROSS CUTTING ISSUES IN HUMANITARIAN RESPONSE



 Please click on each icon to access essential guidance and tools on Cross-Cutting Issues.

-  Age, Gender and Diversity mainstreaming
-  Child Protection mainstreaming
-  Affected Populations
-  Mental Health and Psychosocial Support mainstreaming
-  Gender-Based Violence mainstreaming
-  Protection mainstreaming
-  Disability mainstreaming
-  HIV/AIDS mainstreaming
-  Environment
-  Mine Action mainstreaming
-  Housing, Land and Property mainstreaming

- ### PROTECTION MAINSTREAMING PRINCIPLES
-  Prioritize safety & dignity, and avoid causing harm
 -  Meaningful Access
 -  Accountability
 -  Participation and empowerment



The goal of this infographic is to support a better understanding of the links between the different cross-cutting initiatives and how they contribute to the protection of affected populations.

INTERPRETATION OF THE INFOGRAPHIC

The infographic illustrates the following messages:

- Affected populations are at the center of humanitarian action
 - Mainstreaming seeks to address a particular issue or contribute to achieve a particular outcome without creating a specific sector, program or project for it
 - Affected populations' different needs and capacities as well as their exposure to risks must be taken into account during the humanitarian response.
- Cross-cutting issues focus on particular areas of concern in humanitarian response and address individual, group or general vulnerability issues.

Some of these issues are:

- o Age, Gender and Diversity
 - o Child Protection
 - o Gender-Based Violence
 - o Mental Health and Psychosocial Support
 - o Disability
 - o HIV/AIDS
 - o Mine Action
 - o Housing, Land and Property
- Protection Mainstreaming comprises the four key principles of prioritizing safety and dignity and avoid causing harm, ensuring meaningful access, accountability, and participation and empowerment. The application of these principles allow for all the above described issues to be reflected during the response.
 - Finally humanitarian practitioners must consider and respect the environment where the humanitarian response takes place to ensure contextually appropriate action which avoids environmental degradation putting a strain on affected populations' exposure to risks.