

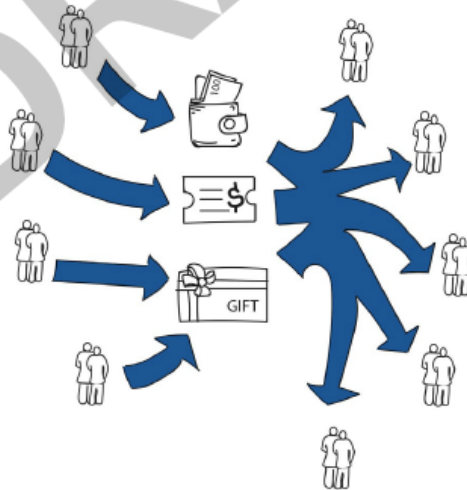


ANNUAL GLOBAL MEETING 2020

# Camp Manager's Guide to CBI

# A CAMP MANAGER'S GUIDE TO CASH BASED INTERVENTIONS (CBI)

What should Camp Managers  
know about CBI?



# DON'T PANIC!

**DON'T PANIC!**

Cash-Based Interventions programming is a way of **achieving the same objectives as other forms of programming!**

You already know many of the steps for good programming – and good Cash-Based Interventions!

-- And if not, there is lots of help available!!

ANNUAL GLOBAL MEETING 2020

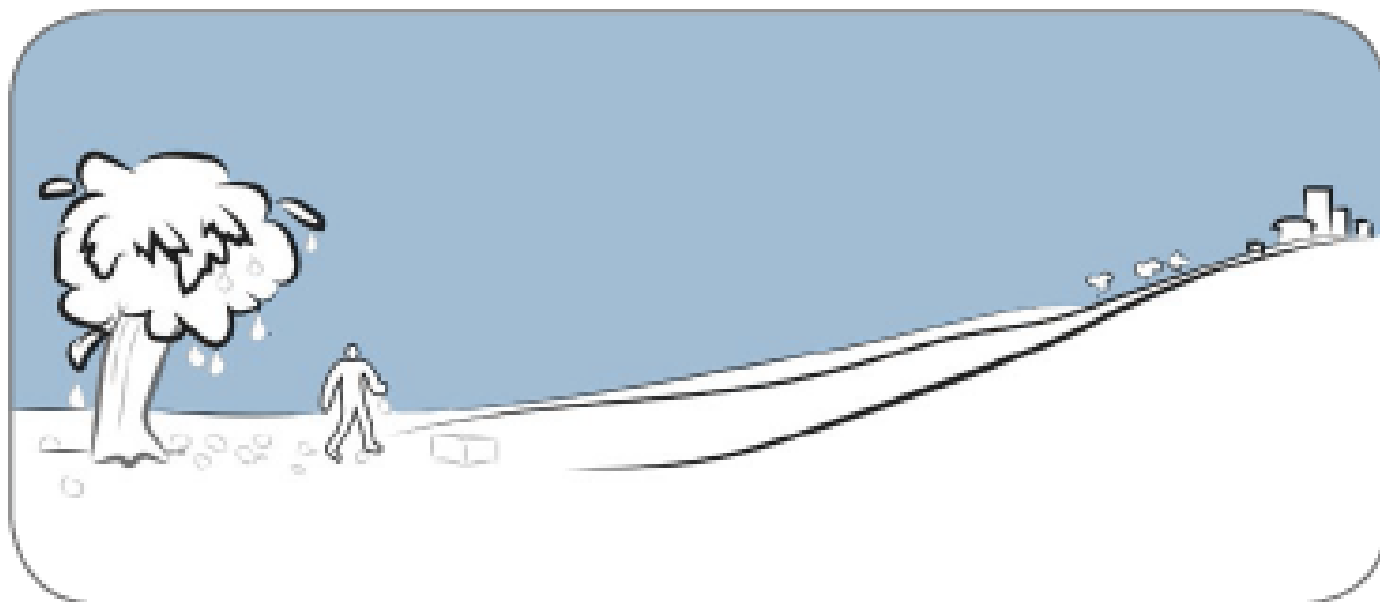


## TABLE OF CONTENTS

i. Don't Panic!	2
ii. Acknowledgements	3
<b>A. Introduction</b>	<b>5</b>
<b>B. About Cash Based Interventions (CBI)?</b>	<b>10</b>
B.1 Preliminary Considerations and Preconditions to use CBI	13
B.2 What is, and what is not CBI?	18
<b>C. Use of CBI in Camps</b>	<b>22</b>
C.1 CBI in Camp Management Operations	28
C.1.1 Capacities	29
C.1.2 Representation and accountability	30
C.1.3 Meeting needs	32
C.1.4 Site environment	33
C.1.5 Exit planning	34
C.2 Camp Manager's Role in CB Implementation by Service Providers	35
C.2.1 Site governance and committees are representative and accountable to the affected population	36
C.2.2 Services provision meet the needs of the displaced and host populations	37
C.2.3 Camp Management personnel are capacitated and able to fulfil their roles	39
C.3 How to Implement CBI in Different Types of Sites	41
<b>D. What are the Risks for Implementing CBI in Camps?</b>	<b>44</b>
D.1 The Types of Risks, and Possible Mitigation Measures	45
D.2 What are the GBV Considerations for Implementing CBI in Camps?	49
D.3 Any Other Protection Issues?	52
<b>E. Monitoring</b>	<b>53</b>
<b>F. Exit and Handover</b>	<b>58</b>
<b>G. References</b>	<b>60</b>



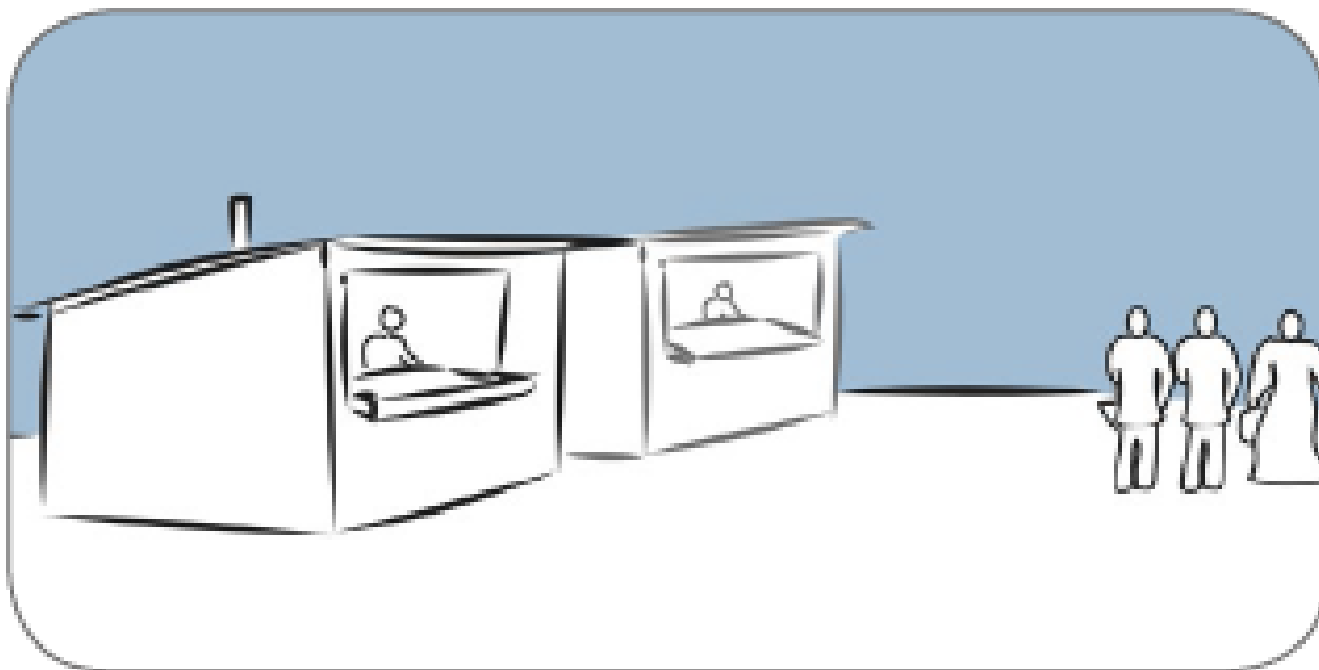
Crisis and disasters CAN...



...affect local markets and supply chains,



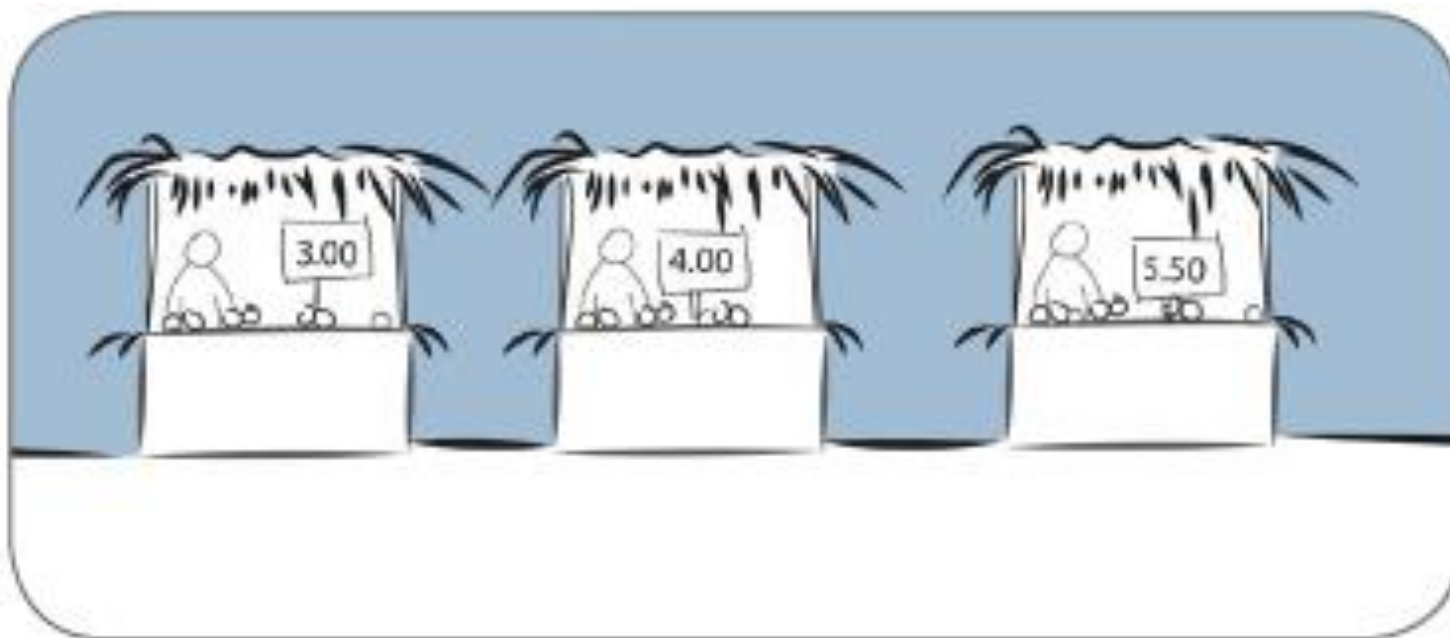
Crisis and disasters CAN...



...reduce commodity and service availability,



Crisis and disasters CAN...



...increase (or destabilize) prices,



Crisis and disasters CAN...



...create inflation.

ANNUAL GLOBAL MEETING 2020





Technical capacity?

*How can we make sure that CBI is used to build safe shelters in the camp?*



Guidance?

*I heard that camps in other countries have done this – how can we get their information translated into our own language?*

Common standards?

*Can we tell everyone yet who we will be targeting, and why?*



Common approaches?

*Where can we have a workshop for partners in different sites, to agree on how to do next week's distribution?*

Monitoring of protection and GBV risks?

*Our partners want to distribute cash to women in the main square – do we know what the risks are?*



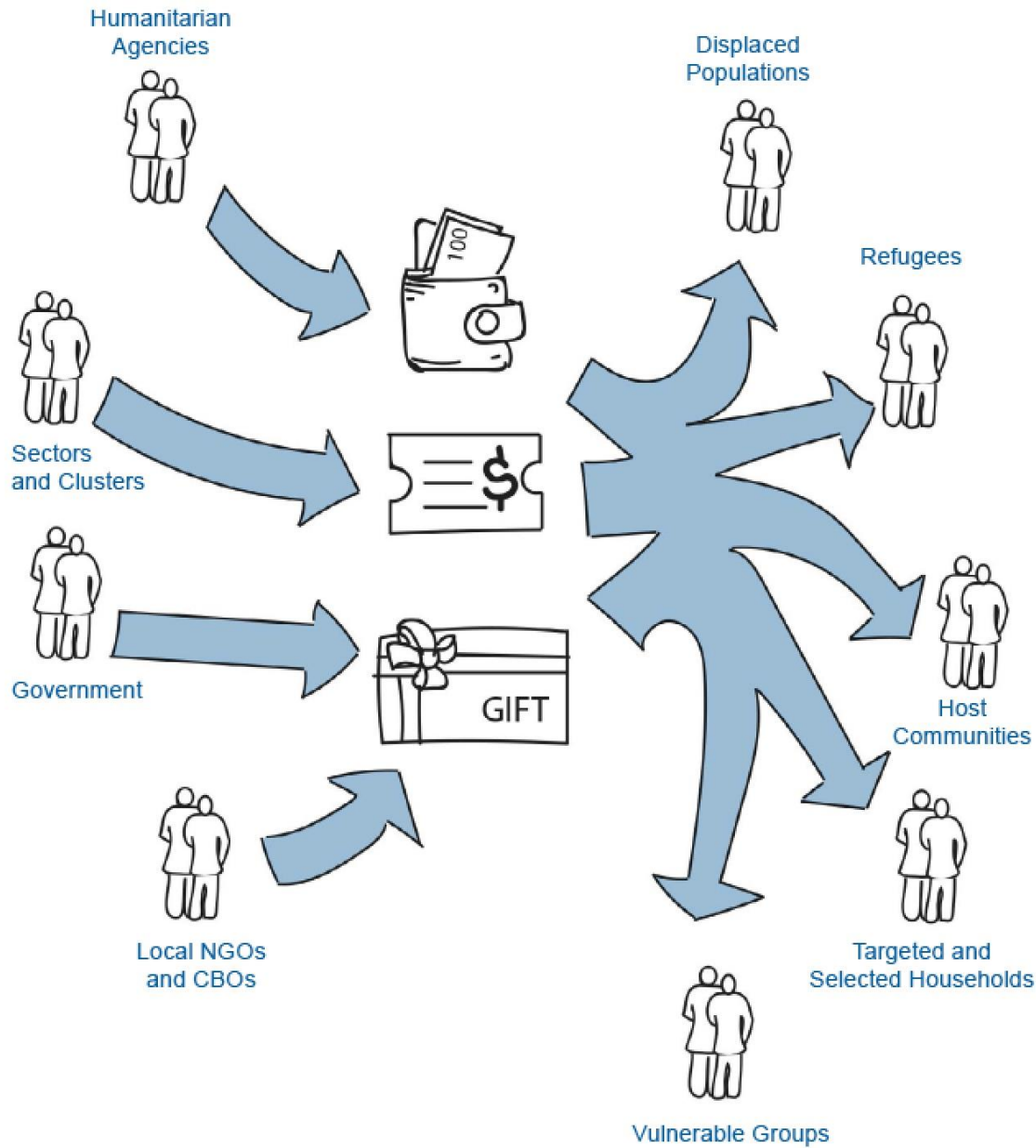
Enabling and coordinating?

*What are the best ways to coordinate the implementation of other service providers' use of CBI?*



ANNUAL GLOBAL MEETING 2020

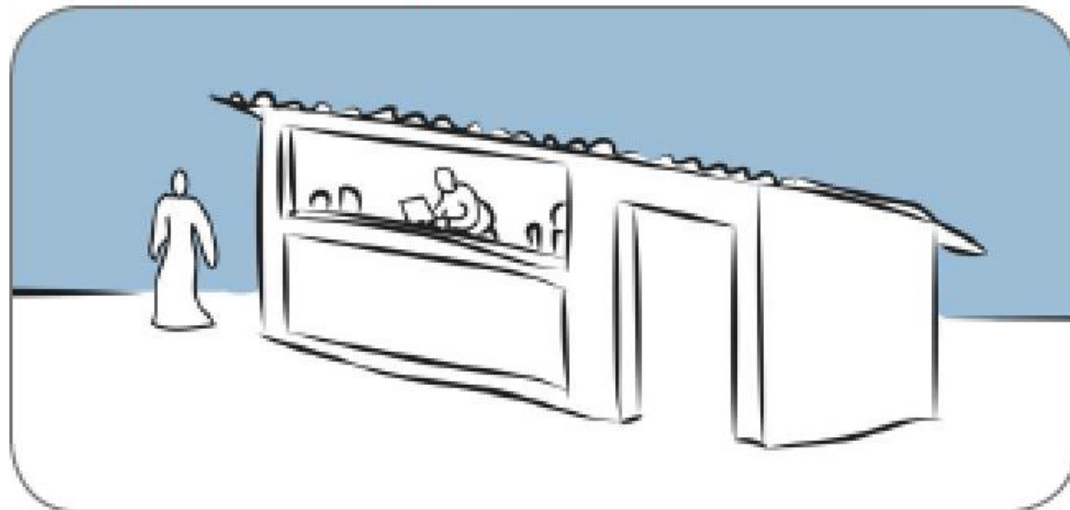




ANNUAL GLOBAL MEETING 2020



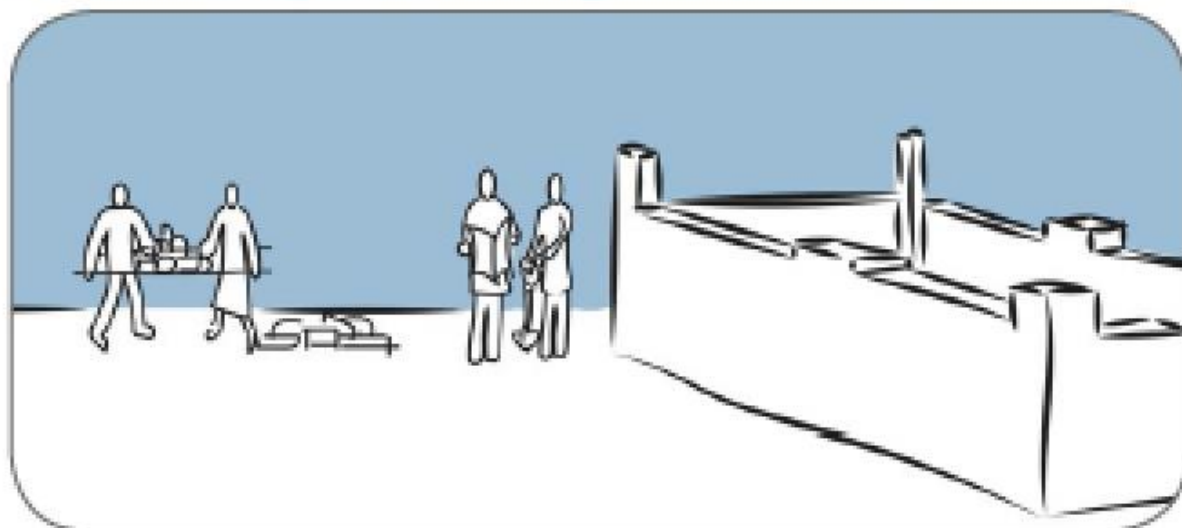
Return and reintegration financial support to IDPs, refugees, former fighters, etc. to allow them to either start businesses, practice a profession or cope with the expenses in the area of return.



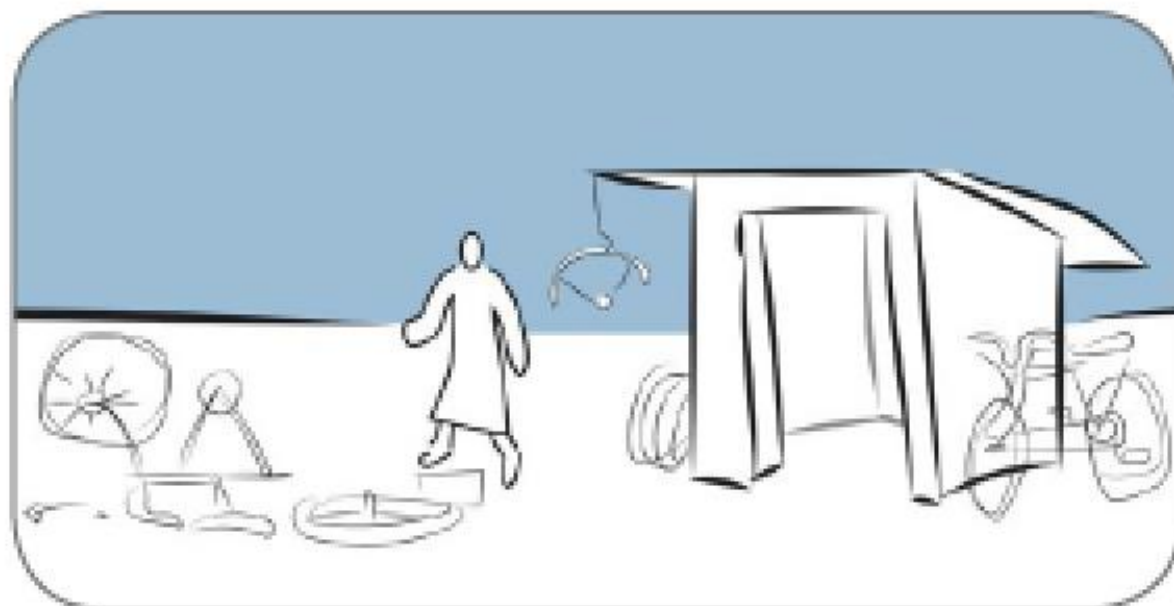
Construction and Rehabilitation of shelters through conditional household cash grants, complemented by technical support.



Rehabilitation of communal facilities through  
Cash for Work (roads, water points, water canals,  
rehabilitating and building markets, etc.).



Cash Grants to SMEs or individuals to start-up or enhance their businesses.



- Links to CM Standards
- Considers risks and mitigation measures
- Discusses how CBI can be used not just for individual households, but to support whole communities



**Thank you!**

**Any Questions?**

