



# Performance Snapshot

Quarter 4

## Uganda Refugee Response Plan (RRP) 2020-2021

January - December 2020



**124,101**  
Refugees & Asylum Seekers  
**40,996 HHs**

**Kyaka II Refugee Settlement**  
**Mbarara Sub-Office**



**36**  
Partners

Sector	Actual status per key indicator	Target/Standard (2020 revised)	Actual <span style="color: blue;">■</span> against annual target <span style="color: yellow;">■</span> or standard <span style="color: grey;">■</span>
Education	67% children of school going age enrolled in primary school <i>(Term 1 2020)</i>	100%	67% <span style="color: yellow;">■</span> 33%
	The pupil teacher ratio for primary schools was 1:80 <i>(Term 1 2020)</i>	1:71	Actual <span style="color: blue;">■</span> Target <span style="color: yellow;">■</span>
Environment & Energy	# 4,050 households using alternative and/or renewable energy <i>(Q1-4 data)</i>	16,479 (target) 1/HH (standard)	25% <span style="color: yellow;">■</span>
	189 hectares of forests, wetlands, riverbanks and lakeshores protected and restored <i>(Q1-4 data)</i>	333 ha	57% <span style="color: blue;">■</span>
Food Security	106,909 refugees receiving food assistance through cash transfers <i>(in Q4)</i>	124,101 Individuals	86% <span style="color: blue;">■</span>
	83% of HH with poor or borderline Food Consumption Score <i>(in Q4)</i>	17% <20% (standard)	17% <span style="color: blue;">■</span>
Health & Nutrition	The severe Acute Malnutrition recovery rate was 87% <i>(in Q4)</i>	75% (target) > 75% (standard)	Actual <span style="color: blue;">■</span> Target/standard <span style="color: yellow;">■</span>
	The under-five mortality rate was 0.17 per 1,000 children <i>(in Q4)</i>	0.1 (target) < 1.5 (standard)	Actual <span style="color: blue;">■</span> Target/standard <span style="color: grey;">■</span>
Livelihoods & Resilience	1,400 households received emergency livelihood support <i>(Q1-4 data)</i>	16,178 HHs	17% <span style="color: blue;">■</span>
	574 refugees received financial literacy training <i>(Q1-4 data)</i>	2,000 Individuals	29% <span style="color: blue;">■</span>
Child Protection	9,296 children participating in community-based activities <i>(Q1-4 data)</i>	9,510 Individuals	98% <span style="color: blue;">■</span>
	353 SGBV survivors received appropriate multi-sectoral support <i>(Q1-4 data)</i>	450 Individuals	78% <span style="color: blue;">■</span>
Protection	1,680 refugees received psychosocial support <i>(Q1-4 data)</i>	8,450 Individuals	20% <span style="color: blue;">■</span>
	885 refugees received legal assistance and legal aid services <i>(Q1-4 data)</i>	10,000 Individuals	9% <span style="color: blue;">■</span>
Shelter, Settlement & NFI	216 of refugee households with specific needs assisted with semi-permanent shelter <i>(Q1-4 data)</i>	2,000 HHs	10% <span style="color: blue;">■</span>
	# of newly arrived refugee households provided with the minimum emergency shelter support <i>(NTR for Q1-4)</i>	847 HHs	0% <span style="color: yellow;">■</span>
Water, Sanitation & Hygiene	16.5 litres per person per day <i>(in Q4)</i>	20 liters (target) 20 liters (standard)	Actual <span style="color: blue;">■</span> Target/standard <span style="color: yellow;">■</span>
	55% household latrine coverage <i>(in Q4)</i>	70% (target) ≥ 85% (standard)	55% <span style="color: blue;">■</span> 70% <span style="color: yellow;">■</span> 85% <span style="color: grey;">■</span>
Cash-Based Interventions	# households received any forms of cash and voucher assistance (including unconditional cash grant) <i>(Q1-4 data)</i>	33,000 HHs	0% <span style="color: yellow;">■</span>
	9,741 of households receiving cash and voucher assistance for basic needs (multipurpose cash) <i>(Q1-4 data)</i>	5,000 HHs	100% <span style="color: blue;">■</span>



# Operational Presence

Quarter 4

## Kyaka II Refugee Settlement

January - December 2020



**05**  
National partners



**24**  
International NGOs



**05**  
UN Agencies



**02**  
Government Partners



Partner/Sector	Education	E&E	Food Security	Health & Nutrition	Livelihood	Protection	CP	SGBV	SSNFI	WASH	CBI
ACOD				OP							
ADRA				OP						OP	
AIRD									IP		
Alight						IP	IP	IP	IP		
AWYAD	OP					OP					
COTEA	OP										
DRC				OP						OP	OP
EDF				OP							
EWB										OP	
FCA	IP				OP						
FRC					OP						
HI	OP					OP					
IRC				OP		OP		OP		OP	
JESE		OP									
KDLG		GP		GP		GP					
KRC				OP							
MTI				IP							
NSAMIZI		IP									
OPM						GP	GP	GP	GP		
OXFAM				OP	OP					IP	
PWJ										OP	
RtP	OP										
SCI				OP			OP				
Street Child	OP						OP				
TPO						OP		OP			
UNICEF	A			A			A				
UNFPA				A							
UNHCR	A	A		A	A	A	A	A	A	A	
UNWOMEN								A			
URCS				OP	OP					OP	
WCH	OP					OP					
WFP			A	A							A
WIU	OP										
WVU			IP						OP	OP	
YARID	OP										
YIDA	OP										

A = United Nations (UN) Agency      GP = Government Partner      IP = UN Implementing Partner      OP = Operational Partner

Action for Community Development (ACOD)  
 Adventist Development and Relief Agency (ADRA)  
 African Initiative for Relief and Development (AIRD)  
 Alight  
 African Women and Youth Action for Development (AWYAD)  
 Children on the Edge Africa (COTEA)  
 Dannish Refugee Council(DRC)  
 EMESCO Development Foundation (EDF)  
 Engineers without Borders (EWB)  
 Finn Church Aid (FCA)  
 Finnish Refugee Council (FRC)  
 Humanity & Inclusion (HI)  
 International Refugee Committee (IRC)

Joint Effort to Save The Environment (JESE)  
 Kyegegwa District Local Government (KDLG)  
 Kabarole Research and Resource Centre (KRC)  
 Medical Teams International (MTI)  
 Nsamizi Training Institute for Social Development  
 Office of the Prime Minister (OPM)  
 Oxford Committee for Famine Relief (OXFAM)  
 Peace Winds Japan (PWJ)  
 Right to Play (RtP)  
 Save the Children International (SCI)  
 Street Child  
 Transcultural Psychosocial Organization (TPO)  
 United Nations Children Emergency Fund

(UNICEF)  
 United Nations population Fund (UNFPA)  
 United Nations Refugee Agency (UNHCR)  
 United Nations Entity and Gender Equality and Empowerment of Women (UNWOMEN)  
 Uganda Red Cross Society (URCS)  
 War Child Holland (WCH)  
 World Food Programme (WFP)  
 Windle International Uganda (WIU)  
 World Vision Uganda (WVU)  
 Young African Refugees for Integral Development (YARID)  
 Youth Initiative for Development in Africa (YIDA)

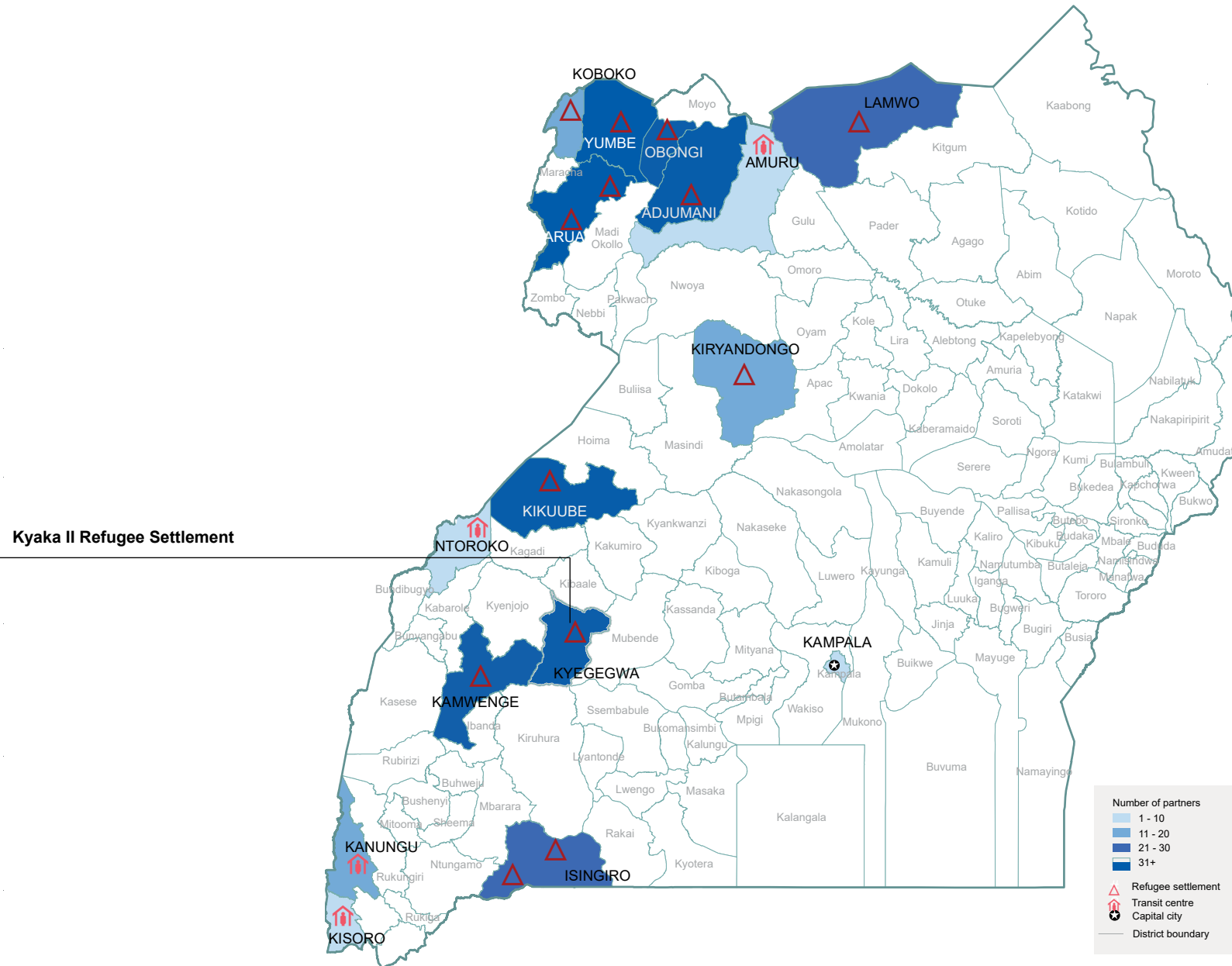


# Operational Presence

Quarter 4

## Map of Uganda Showing Location of Settlement

January - December 2020



The boundaries and names shown and the designations on this map do not imply official endorsement or acceptance by the United Nations