



Performance Snapshot

Quarter 4

Uganda Refugee Response Plan (RRP) 2020-2021

January - December 2020



70,749
Refugees & Asylum Seekers
10,479 HHs

Kiryandongo Refugee Settlement
Arua Sub-Office



22
Partners

Sector	Actual status per key indicator	Target/Standard (2020 revised)	Actual against annual target or standard
Education	68% children of school going age enrolled in primary school <i>(Term I 2020)</i>	100%	68%
Education	The pupil teacher ratio for primary schools was 1:68 <i>(Term I 2020)</i>	1:71	
Environment & Energy	1,299 households using alternative and/or renewable energy <i>(Q1 - 4 data)</i>	9,347 <i>(target)</i> 1/HH <i>(standard)</i>	26%
Environment & Energy	84.1 hectares of forests, wetlands, riverbanks and lakeshores protected and restored <i>(Q1 - 4 data)</i>	110 ha	31%
Food Security	69,518 refugees received monthly cash for food and in-kind assistance <i>(74% cash and 24% food) (In Q4)</i>	70,749 Individuals	
Food Security	55% of HH with poor or borderline Food Consumption Score <i>(In Q4)</i>	18% <i>(original 2020 target)</i> <20% <i>(standard)</i>	
Health & Nutrition	The severe Acute Malnutrition recovery rate was 63% <i>(In Q4)</i>	75% <i>(target)</i> > 75% <i>(standard)</i>	
Health & Nutrition	The under-five mortality rate was 0.21 per 1,000 children <i>(In Q4)</i>	0.1 <i>(target)</i> < 1.5 <i>(standard)</i>	
Livelihoods & Resilience	3,107 refugee households received emergency livelihood support <i>(Q1 - 4 data)</i>	6,605 HHs	47%
Livelihoods & Resilience	345 refugees received financial literacy training <i>(Q1 - 4 data)</i>	2,000 Individuals	17%
Child Protection	3,180 children participated in community-based support activities <i>(Q1 - 4 data)</i>	5,759 Individuals	55%
SGBV	107 SGBV survivors received appropriate multi-sectoral support <i>(Q1 - 4 data)</i>	112 Individuals	96%
Protection	1,810 refugees received psychosocial support <i>(Q1 - 4 data)</i>	8,000 Individuals	23%
Protection	1,044 refugees received legal assistance and legal aid services <i>(Q1 - 4 data)</i>	10,000 Individuals <i>(Original 2020 target)</i>	10%
Shelter, Settlement & NFI	38 New arrivals NFI kits were distributed <i>(Q1 - 4 data)</i>	393 HHs	10%
Shelter, Settlement & NFI	199 established households received in kind NFI support <i>(Q1 - 4 data)</i>	10,379 HHs	2%
Water, Sanitation & Hygiene	Refugees received 15 litres per person per day <i>(In Q4)</i>	20 liters <i>(target)</i> 20 liters <i>(standard)</i>	
Water, Sanitation & Hygiene	80% of Refugee households had access to latrine <i>(In Q4)</i>	75% <i>(target)</i> ≥ 85% <i>(standard)</i>	
Cash-Based Interventions	9,057 households received any form of cash and voucher assistance <i>(including CBI for WASH, L&R and EE) (Q1 - 4 data)</i>	10,000 HHs	91%
Cash-Based Interventions	# of PSN households assisted with cash and voucher for basic needs <i>(NTR for 2020)</i>	10,000 HHs	0%



Operational Presence

Quarter 4

Kiryandongo Refugee Settlement

January - December 2020



02
National
Partners



12
International
NGOs



06
UN
Agencies



02
Government
Partners



Partner/Sector	Education	E&E	Food Security	Health & Nutrition	Livelihood	Protection	CP	SGBV	SSNFI	WASH	CBI
ACF				IP	OP						
ACORD								IP			
AFI			IP								IP
AIRD									IP		
BRAC	OP				OP					OP	
C-TEN						IP					
DCA		IP									
DRC						IP	IP	IP	IP	OP	
Give Directly											OP
IRC				IP							
KDLG				GP							
OPM						GP					
SCI	OP				OP		IP				
TPO					IP	IP		IP			
UNFPA				A				A			
UNHCR	A	A		A		A	A	A	A	A	
UNICEF				A			A			A	
UNWOMEN					A	A		A			
WFP			A	A							A
WHO				A							
WIU	IP										
WMU										IP	
Total #	4	2	2	8	5	6	4	6	3	5	3

A = United Nations (UN) Agency

GP = Government Partner

IP = UN Implementing Partner

OP = Operational Partner

Action Against Hunger (ACF)

Kiryandongo District Local Government

World Health Organization (WHO)

Agency for Cooperation in Research and Development (ACORD)

(KDLG)

Windle International Uganda (WIU)

Andre Foods International (AFI)

Office of the Prime Minister (OPM)

Water Mission Uganda (WMU)

African Initiatives for Relief and Development (AIRD)

Save the Children International (SCI)
Transcultural Psychosocial Organization (TPO)

Building Resources Across Communities (BRAC)

United Nations Population Fund (UNFPA)

Community Technology Empowerment Network-Uganda (CTEN-Uganda)

United Nations High Commissioner for Refugees (UNHCR)

DanChurch Aid (DCA)

United Nations International Children's Emergency Fund (UNICEF)

Danish Refugee Council (DRC)

United Nations Entity for Gender Equality and the Empowerment of Women (UNWOMEN)

Give Directly

World Food Programme (WFP)

International Rescue Committee (IRC)

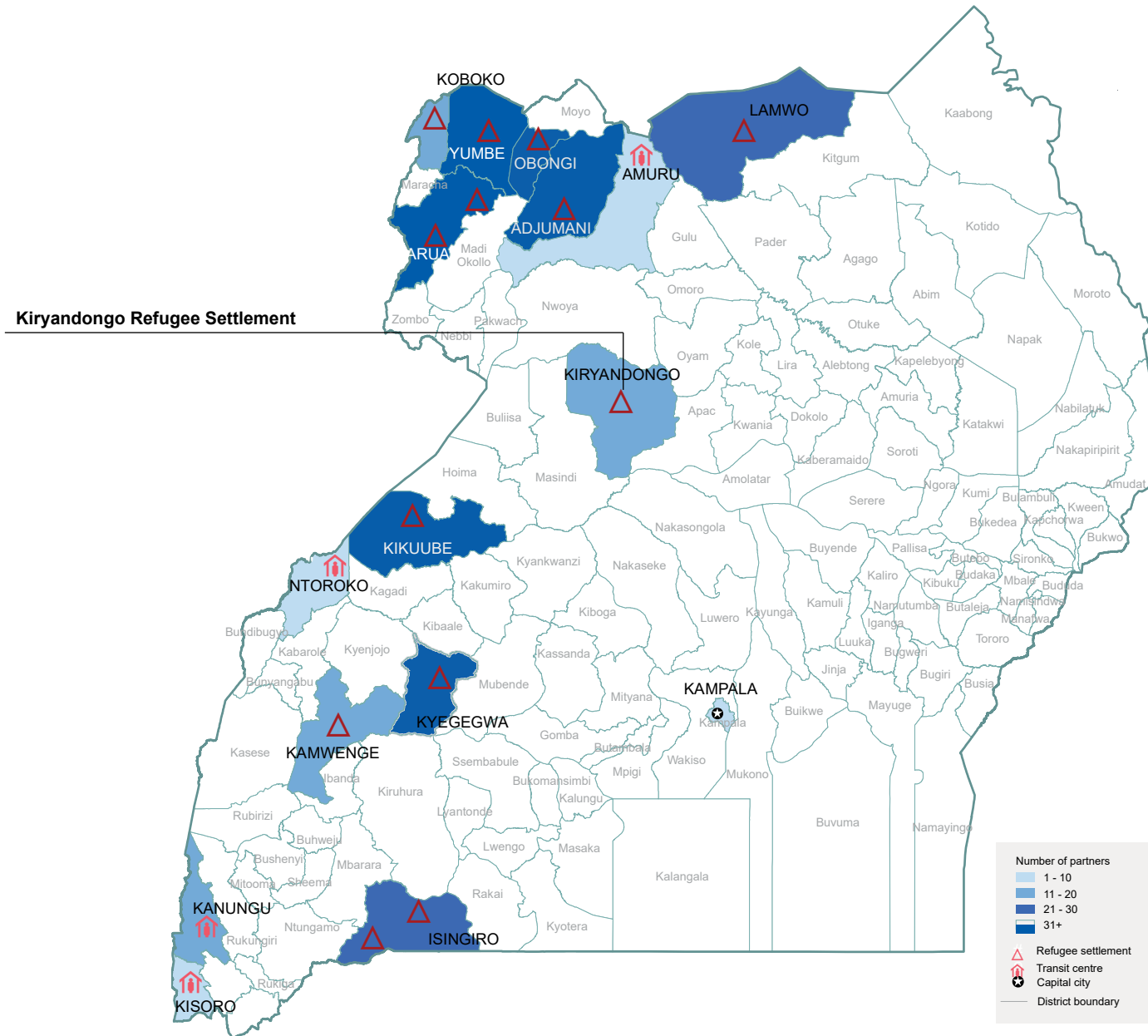


Operational Presence

Quarter 4

Map of Uganda Showing Location of Settlements and number of partners

January - December 2020



The boundaries and names shown and the designations on this map do not imply official endorsement or acceptance by the United Nations