



# Performance Snapshot

Quarter 4

Uganda Refugee Response Plan (RRP) 2020-2021

January - December 2020



**67,834**  
Refugees & Asylum Seekers  
**19,926 HHs**

Imvepi Refugee Settlement  
Arua Sub-Office



**45**  
Partners

Sector	Actual status per key indicator	Target/Standard (2020 revised)	Actual  against annual target  or standard
Education	58% children of school going age enrolled in primary school <i>(Term I 2020)</i>	95%	58%
	The pupil teacher ratio for primary schools was 1:76 <i>(Term I 2020)</i>	1:71	Actual  Target
Environment & Energy	1,298 households using alternative and/or renewable energy <i>(Q1 - 4 data)</i>	7,209 <i>(target)</i> 1/HH <i>(standard)</i>	18%
	148.4 hectares of forests, wetlands, riverbanks and lakeshores protected and restored <i>(Q1 - 4 data)</i>	107 ha	>100%
Food Security	61,704 refugees received monthly in-kind food assistance <i>(In Q4)</i>	67,834 Individuals	91%
	28% of HH with poor or borderline Food Consumption Score <i>(In Q4)</i>	18% <i>(original 2020 target)</i> <20% <i>(standard)</i>	18%
Health & Nutrition	The severe Acute Malnutrition recovery rate was 100% <i>(In Q4)</i>	75% <i>(target)</i> > 75% <i>(standard)</i>	Actual  Target/standard
	The under-five mortality rate was 0.03 per 1,000 children <i>(In Q4)</i>	0.1 <i>(target)</i> < 1.5 <i>(standard)</i>	Actual  Target/standard
Livelihoods & Resilience	11,452 refugee households received emergency livelihood support <i>(Q1 - 4 data)</i>	7,085 HHs	>100%
	556 refugees received financial literacy training <i>(Q1 - 4 data)</i>	2,000 Individuals	28%
Child Protection	13,406 children participated in community-based support activities <i>(Q1 - 4 data)</i>	5,524 Individuals	>100%
	152 SGBV survivors received appropriate multi-sectoral support <i>(Q1 - 4 data)</i>	210 Individuals	72%
Protection	3,157 refugees received psychosocial support <i>(Q1 - 4 data)</i>	14,000 Individuals	23%
	1,145 refugees received legal assistance and legal aid services <i>(Q1 - 4 data)</i>	20,000 Individuals <i>(Original 2020 target)</i>	6%
Shelter, Settlement & NFI	26 refugee households with specific needs assisted with semi-permanent shelter <i>(Q1 - 4 data)</i>	1,000 HHs	3%
	898 newly arrived refugee households provided with the minimum emergency shelter support <i>(Q1 - 4 data)</i>	531 HHs	> 100%
Water, Sanitation & Hygiene	Refugees received 25.4 litres per person per day <i>(In Q4)</i>	20 liters <i>(target)</i> 20 liters <i>(standard)</i>	Actual  Target/standard
	88% Refugee households had access to latrine <i>(In Q4)</i>	75% <i>(target)</i> ≥ 85% <i>(standard)</i>	88%
Cash-Based Interventions	1,589 households received any form of cash and voucher assistance <i>(including CBI for L&amp;R and EE) (Q1 - 4 data)</i>	3,500 HHs	45%
	1,157 PSN households received cash and voucher assistance for basic needs <i>(multipurpose cash) (Q1 - 4 data)</i>	2,000 HHs	58%



# Operational Presence

Quarter 4

## Imvepi Refugee Settlement

January - December 2020



**11**  
National  
partners



**26**  
International  
NGOs



**06**  
UN  
Agencies



**02**  
Government  
partners



Partner/Sector	Education	E&E	Food Security	Health & Nutrition	Livelihood	Protection	CP	SGBV	SSNFI	WASH	CBI
AARJ	OP										
ADLG				GP							
AFI			IP								
AIRD									IP		
CAFT						OP					
CARE				OP							
Caritas					OP						
ChildVoice						OP					
CORDAID		OP			OP						
CUAMM				OP							
C-TEN						IP					
DCA		IP									OP
DRC					OP	IP	IP	IP	IP	OP	
FCA					OP						
GRI				OP							
HI	OP					OP					
IDI				OP							
IRC				IP							
JAM					OP						
JPIIIPC						OP					
Kulika					OP						
MSF-F				OP							
NRC	OP										
NURI					OP						
OPM						GP			GP		
Oxfam						OP					
PALM Corps	OP										
PWJ									OP		
RICE-WN		OP									
SCI				OP			IP	OP			
TPO						IP		IP			
TVRA		OP									
UNFPA				A							
UNHCR	A	A		A	A	A	A	A	A	A	
UNICEF				A			A				
UNWOMEN						A		A			
URCS				OP							
WCH	OP					OP	OP				
WIU	IP										
WFP			A	A							
WHH					OP					OP	
WHO				A							
WMU										IP	
WVI					OP		IP				
ZOA	OP										
<b>Total #</b>	<b>8</b>	<b>5</b>	<b>2</b>	<b>14</b>	<b>11</b>	<b>11</b>	<b>6</b>	<b>5</b>	<b>5</b>	<b>4</b>	<b>1</b>

A = United Nations (UN) Agency

GP = Government Partner

IP = UN Implementing Partner

OP = Operational Partner

Association for Aid and Relief, Japan (AARJ)

Arua District Local Government (ADLG)

Andre Foods International (AFI)

African Initiatives for Relief and Development (AIRD)

Call for Transformation (CAFT)

Cooperative for Assistance and Relief Everywhere (CARE)

Caritas (Caritas Arua Diocese)

Child Voice

Catholic Organization for Relief and Development Aid

(CORDAID)

Doctors with Africa (CUAMM)

Community Technology Empowerment Network-Uganda

(CTEN-Uganda)

DanChurchAid (DCA)

Danish Refugee Council (DRC)

FinChurch Aid (FCA)

Global Gefugee International (GRI)

Humanity&Inclusion (HI)

Infectious Disease Institute (IDI)

International Rescue Committee (IRC)

Joint Aid Management (JAM)

John Paul II Justice and Peace Centre (JPIIIPC)

Kulika Uganda

Medicines Sans Frontiers France (MSF-F)

Norwegian Refugee Council (NRC)

Northern Uganda Resilience Initiative (NURI)

Office of the Prime Minister (OPM)

Oxfam

Promoters of Agriculture and Market Linkages (PALM Corps)

Peace Winds Japan (PWJ)

Rural Initiative for Community Empowerment in West Nile

(RICE-WN)

Save the Children International (SCI)

Transcultural Psychosocial Organization (TPO)

The Victims Relief Alliance (TVRA)

United Nations Population Fund (UNFPA)

United Nations High Commissioner for Refugees (UNHCR)

United Nations International Children's Emergency Fund

(UNICEF)

The United Nations Entity for Gender Equality and the

Empowerment of Women (UNWOMEN)

Uganda Red Cross Society (URCS)

War Child Holland (WCH)

Windle International Uganda (WIU)

World Food Programme (WFP)

Welthunger Hilfe (WHH)

World Health Organization (WHO)

Water Mission Uganda (WMU)

World Vision International (WVI)

ZOA International (ZOA)

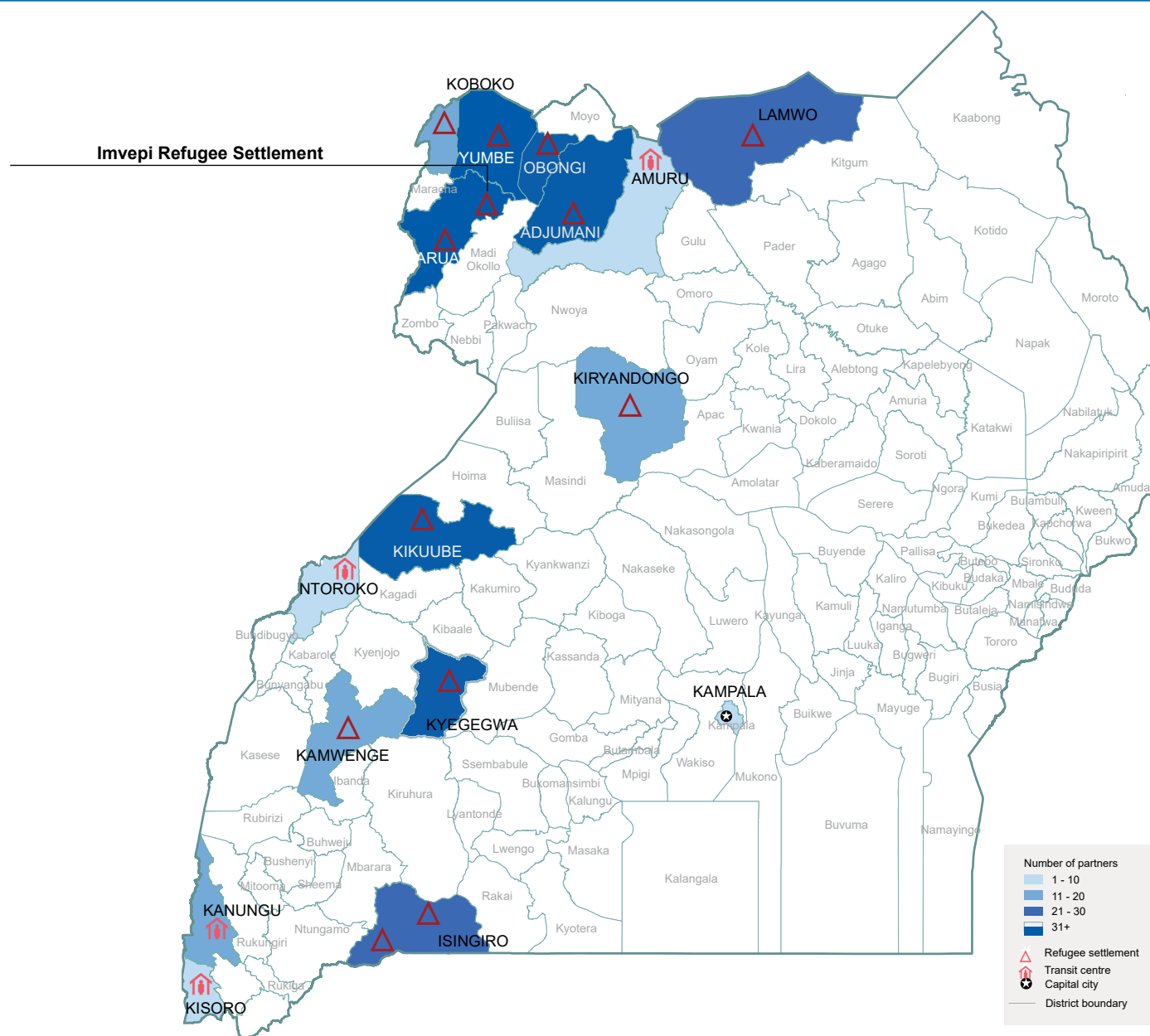


# Operational Presence

Quarter 4

## Map of Uganda Showing Location of Settlements and number of partners

January - December 2020



The boundaries and names shown and the designations on this map do not imply official endorsement or acceptance by the United Nations