

## KEY FIGURES

**306,113**  
Total refugee population

**98%**

Living in camps and settlements

**82%**

Are Women and Children

**67,481**  
Households

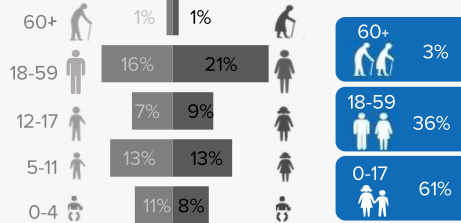
**2%**

Living in urban areas

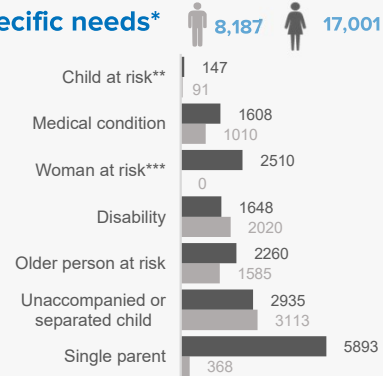
**52%**

Are female

## Age and gender breakdowns

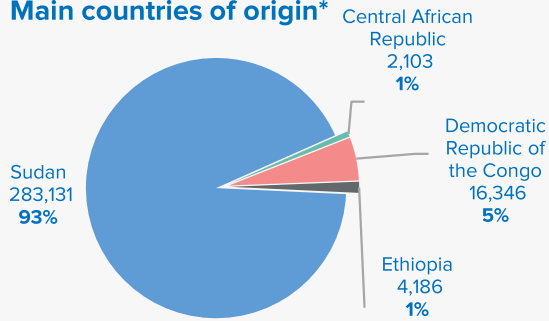


## Main Specific needs\*



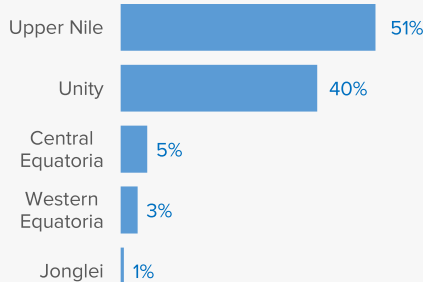
\*individual can have more than one specific need  
\*\*Excludes children at risk of not attending school  
\*\*\*Excludes lactating mothers

## Main countries of origin\*



\* Excludes 347 refugees from other countries

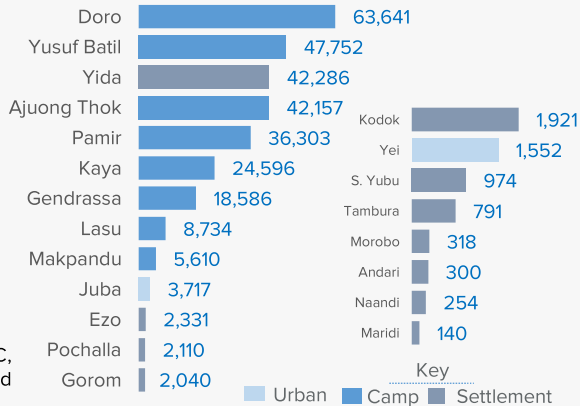
## States hosting refugees



## Our Partners

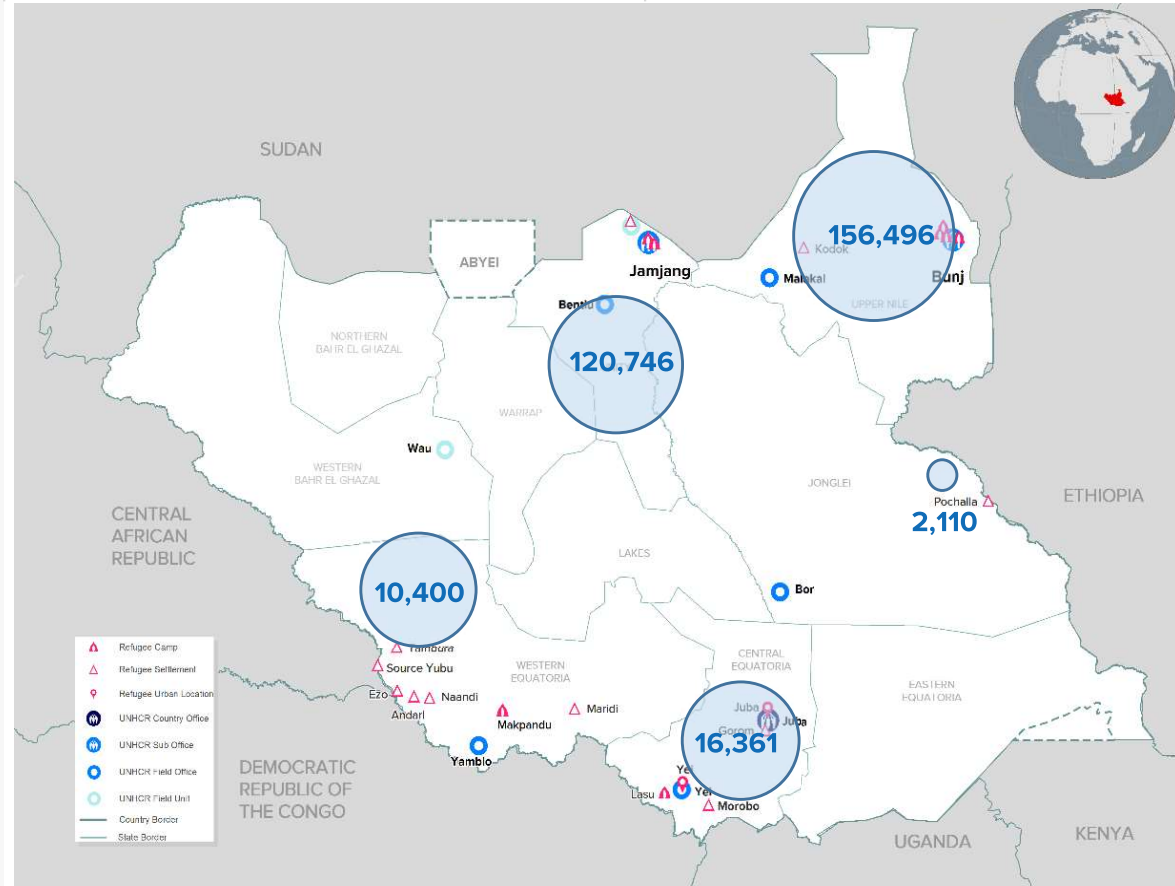
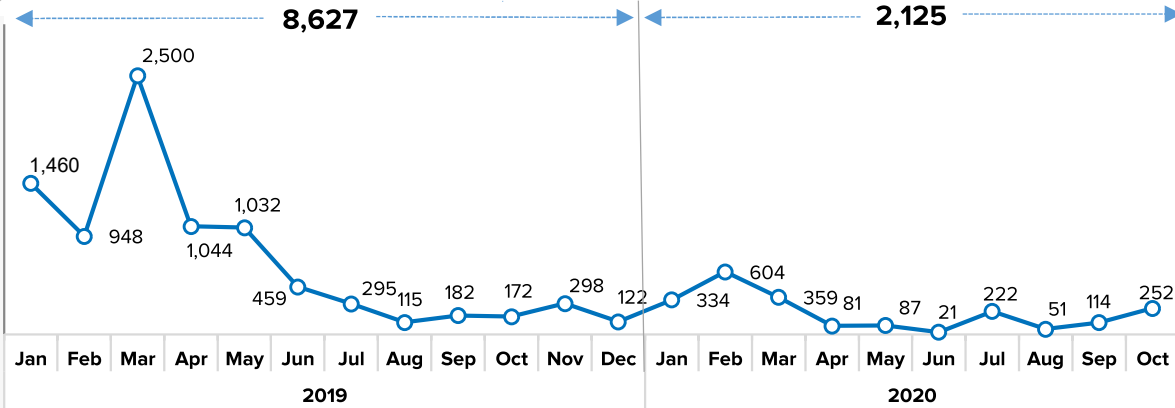
CRA, AAHI, ACROSS, ACTED, AHA, CARE, DRC, HDC, IMC, IRC, LWF, RI, SCI, SP, UMCOR, JRS and WVI.

## Refugee locations



Key  
Urban Camp Settlement

## New arrivals trends Jan 2019 – Oct 2020



Legend:  
 ▲ Refugee Camp  
 △ Refugee Settlement  
 ● Refugee Urban Location  
 ○ UNHCR Country Office  
 ○ UNHCR Field Office  
 ○ UNHCR Field Unit  
 — Country Border  
 — State Border

**Note:** South Sudan hosts 3,787 asylum seekers (Juba -3,773; Makpandu- 9; Maban-1; Pamir -4).

# South Sudan Refugee statistics: Population by Location, Sex and Age Group

as of the 31-October-2020



State	Location	0 - 4 years			5 - 11 years			12 - 17 years			18 - 59 years			60 years +			Total			Households		
		F	M	Total	F	M	Total	F	M	Total	F	M	Total	F	M	Total	F	M	Total	F	M	Total
Upper Nile	Doro	5,574	5,832	11,406	8,333	8,866	17,199	5,307	5,462	10,769	12,932	10,051	22,983	702	582	1,284	32,848	30,793	63,641	7,758	6,038	13,796
	Kaya	2,008	2,197	4,205	2,948	3,141	6,089	2,044	2,013	4,057	5,310	3,792	9,102	490	653	1,143	12,800	11,796	24,596	2,775	2,477	5,252
	Yusuf Batil	3,826	4,032	7,858	5,874	6,132	12,006	4,027	4,045	8,072	9,856	7,867	17,723	954	1,139	2,093	24,537	23,215	47,752	4,798	4,606	9,404
	Gendrassa	1,462	1,502	2,964	2,274	2,446	4,720	1,629	1,540	3,169	3,971	3,002	6,973	346	414	760	9,682	8,904	18,586	2,157	1,825	3,982
	Kodok	0	0	0	274	286	560	226	182	408	475	401	876	40	37	77	1,015	906	1,921	327	213	540
	<b>Total</b>	<b>12,870</b>	<b>13,563</b>	<b>26,433</b>	<b>19,703</b>	<b>20,871</b>	<b>40,574</b>	<b>13,233</b>	<b>13,242</b>	<b>26,475</b>	<b>32,544</b>	<b>25,113</b>	<b>57,657</b>	<b>2,532</b>	<b>2,825</b>	<b>5,357</b>	<b>80,882</b>	<b>75,614</b>	<b>156,496</b>	<b>17,815</b>	<b>15,159</b>	<b>32,974</b>
Unity State	Ajounj Thok	3,547	3,561	7,108	5,400	5,502	10,902	4,033	4,310	8,343	8,280	6,904	15,184	373	247	620	21,633	20,524	42,157	5,044	3,048	8,092
	Pamir	3,675	3,679	7,354	4,936	5,050	9,986	3,380	3,126	6,506	7,308	4,621	11,929	328	200	528	19,627	16,676	36,303	5,575	2,110	7,685
	Yida	3,035	3,134	6,169	6,561	6,716	13,277	4,477	4,105	8,582	9,786	3,781	13,567	430	261	691	24,289	17,997	42,286	6,398	1,837	8,235
	<b>Total</b>	<b>10,257</b>	<b>10,374</b>	<b>20,631</b>	<b>16,897</b>	<b>17,268</b>	<b>34,165</b>	<b>11,890</b>	<b>11,541</b>	<b>23,431</b>	<b>25,374</b>	<b>15,306</b>	<b>40,680</b>	<b>1,131</b>	<b>708</b>	<b>1,839</b>	<b>65,549</b>	<b>55,197</b>	<b>120,746</b>	<b>17,017</b>	<b>6,995</b>	<b>24,012</b>
Central Equatoria	Gorom	172	192	364	215	229	444	165	189	354	441	397	838	27	13	40	1,020	1,020	2,040	324	310	634
	Juba	104	86	190	211	197	408	137	131	268	458	2,271	2,729	7	115	122	917	2,800	3,717	243	2,287	2,530
	Lasu	119	133	252	1,268	1,264	2,532	820	800	1,620	2,117	1,818	3,935	251	144	395	4,575	4,159	8,734	1,255	1,193	2,448
	Morobo	5	5	10	54	49	103	26	44	70	71	53	124	4	7	11	160	158	318	38	41	79
	Yei	93	102	195	174	214	388	140	148	288	277	370	647	15	19	34	699	853	1,552	227	313	540
	<b>Total</b>	<b>493</b>	<b>518</b>	<b>1,011</b>	<b>1,922</b>	<b>1,953</b>	<b>3,875</b>	<b>1,288</b>	<b>1,312</b>	<b>2,600</b>	<b>3,364</b>	<b>4,909</b>	<b>8,273</b>	<b>304</b>	<b>298</b>	<b>602</b>	<b>7,371</b>	<b>8,990</b>	<b>16,361</b>	<b>2,087</b>	<b>4,144</b>	<b>6,231</b>
Jonglei State	Pochalla	201	206	407	217	254	471	190	235	425	574	168	742	52	13	65	1,234	876	2,110	435	87	522
	<b>Total</b>	<b>201</b>	<b>206</b>	<b>407</b>	<b>217</b>	<b>254</b>	<b>471</b>	<b>190</b>	<b>235</b>	<b>425</b>	<b>574</b>	<b>168</b>	<b>742</b>	<b>52</b>	<b>13</b>	<b>65</b>	<b>1,234</b>	<b>876</b>	<b>2,110</b>	<b>435</b>	<b>87</b>	<b>522</b>
Western Equatoria	Andari	0	0	0	49	48	97	19	25	44	86	52	138	8	13	21	162	138	300	60	61	121
	Ezo	0	0	0	254	284	538	153	153	306	787	504	1,291	105	91	196	1,299	1,032	2,331	554	424	978
	Makpandu	527	560	1,087	664	626	1,290	398	359	757	1,238	1,115	2,353	51	72	123	2,878	2,732	5,610	789	941	1,730
	Maridi	1	1	2	19	13	32	14	16	30	28	46	74	0	2	2	62	78	140	25	42	67
	Naandi	0	0	0	40	36	76	24	29	53	55	52	107	8	10	18	127	127	254	39	45	84
	Source yubu	0	0	0	141	171	312	90	89	179	288	162	450	16	17	33	535	439	974	196	124	320
	Tambura	0	1	1	145	157	302	84	73	157	201	118	319	8	4	12	438	353	791	147	95	242
	<b>Total</b>	<b>528</b>	<b>562</b>	<b>1,090</b>	<b>1,312</b>	<b>1,335</b>	<b>2,647</b>	<b>782</b>	<b>744</b>	<b>1,526</b>	<b>2,683</b>	<b>2,049</b>	<b>4,732</b>	<b>196</b>	<b>209</b>	<b>405</b>	<b>5,501</b>	<b>4,899</b>	<b>10,400</b>	<b>1,810</b>	<b>1,732</b>	<b>3,542</b>
<b>Grand total</b>		<b>24,349</b>	<b>25,223</b>	<b>49,572</b>	<b>40,051</b>	<b>41,681</b>	<b>81,732</b>	<b>27,383</b>	<b>27,074</b>	<b>54,457</b>	<b>64,539</b>	<b>47,545</b>	<b>112,084</b>	<b>4,215</b>	<b>4,053</b>	<b>8,268</b>	<b>160,537</b>	<b>145,576</b>	<b>306,113</b>	<b>39,164</b>	<b>28,117</b>	<b>67,281</b>

# South Sudan Statistics: Population by Country of Origin, Sex and Age Group

as of the 31-October-2020



Country of Origin	Settlement	Households (HHs)			Persons																	
		Total HHs	Female headed		0 - 4 years			5 - 11 years			12 - 17 years			18 - 59 years			60 years +			Total		
			HHs	%	F	M	T	F	M	T	F	M	T	F	M	T	F	M	T	F	M	T
CENTRAL AFRICAN REPUBLIC	Andari	1	-	0%	0	0	0	0	0	0	0	0	0	1	1	0	0	0	0	1	1	
	Ezo	13	8	62%	0	0	0	3	6	9	2	4	6	13	4	17	1	2	3	19	16	35
	Makpandu	143	32	22%	26	38	64	22	32	54	21	18	39	60	114	174	0	6	6	129	208	337
	Naandi	7	4	57%	0	0	0	1	7	8	1	0	1	5	3	8	0	0	0	7	10	17
	SourceYubu	308	188	61%	0	0	0	136	171	307	87	87	174	279	158	437	15	15	30	517	431	948
	Tambura	228	139	61%	0	1	1	139	152	291	83	71	154	192	112	304	6	4	10	420	340	760
	Juba	1	-	0%	0	0	0	0	0	0	2	1	3	1	1	2	0	0	0	3	2	5
	<b>Total</b>	<b>701</b>	<b>371</b>	<b>53%</b>	<b>26</b>	<b>39</b>	<b>65</b>	<b>301</b>	<b>368</b>	<b>669</b>	<b>196</b>	<b>181</b>	<b>377</b>	<b>550</b>	<b>393</b>	<b>943</b>	<b>22</b>	<b>27</b>	<b>49</b>	<b>1,095</b>	<b>1,008</b>	<b>2,103</b>
DEMOCRATIC REPUBLIC OF THE CONGO	Gorom	1	-	0%	1	-	1	-	1	1	-	1	1	-	-	-	-	1	1	1	3	4
	Andari	120	60	50%	-	-	-	49	48	97	19	25	44	86	51	137	8	13	21	162	137	299
	Ezo	965	546	57%	-	-	-	251	278	529	151	149	300	774	500	1,274	104	89	193	1,280	1,016	2,296
	Juba	18	5	28%	-	1	1	4	2	6	3	3	6	7	10	17	2	3	5	16	19	35
	Lasu	2,209	1,197	54%	107	129	236	1,165	1,161	2,326	753	710	1,463	2,008	1,599	3,607	250	140	390	4,283	3,739	8,022
	Makpandu	1,370	702	51%	449	448	897	527	483	1,010	296	277	573	1,019	773	1,792	50	57	107	2,341	2,038	4,379
	Morobo	79	38	48%	5	5	10	54	49	103	26	44	70	71	53	124	4	7	11	160	158	318
	Naandi	77	35	45%	-	-	-	39	29	68	23	29	52	50	49	99	8	10	18	120	117	237
	SourceYubu	12	8	67%	-	-	-	5	-	5	3	2	5	9	4	13	1	2	3	18	8	26
	Tambura	14	8	57%	-	-	-	6	5	11	1	2	3	9	6	15	2	-	2	18	13	31
	Yei	255	171	67%	50	56	106	77	91	168	51	63	114	180	106	286	15	10	25	373	326	699
<b>Total</b>	<b>5,120</b>	<b>2,770</b>	<b>54%</b>	<b>612</b>	<b>639</b>	<b>1,251</b>	<b>2,177</b>	<b>2,147</b>	<b>4,324</b>	<b>1,326</b>	<b>1,305</b>	<b>2,631</b>	<b>4,213</b>	<b>3,151</b>	<b>7,364</b>	<b>444</b>	<b>332</b>	<b>776</b>	<b>8,772</b>	<b>7,574</b>	<b>16,346</b>	
ETHIOPIA	Doro	1	-	1	2	-	2	2	2	2	-	-	-	3	1	4	-	-	-	7	1	8
	Gorom	627	324	52%	170	190	360	212	226	438	163	188	351	440	392	832	27	11	38	1,012	1,007	2,019
	Juba	15	3	0%	1	-	1	1	2	3	-	-	-	9	13	22	-	-	-	11	15	26
	Makpandu*	7	2	0%	1	-	1	1	1	2	1	-	1	2	5	7	-	-	-	5	6	11
	Pochalla	522	435	83%	201	206	407	217	254	471	190	235	425	574	168	742	52	13	65	1,234	876	2,110
	Kodok	2	1	50%	-	-	-	1	1	2	2	-	2	2	-	2	-	-	-	5	1	6
	Ajuong Thok	1	1	100%	-	1	1	-	1	1	-	-	-	2	2	4	-	-	-	2	4	6
	<b>Total</b>	<b>1,175</b>	<b>766</b>	<b>4</b>	<b>375</b>	<b>397</b>	<b>772</b>	<b>434</b>	<b>485</b>	<b>919</b>	<b>356</b>	<b>423</b>	<b>779</b>	<b>1,032</b>	<b>581</b>	<b>1,613</b>	<b>79</b>	<b>24</b>	<b>103</b>	<b>2,276</b>	<b>1,910</b>	<b>4,186</b>
SUDAN	Ajuong Thok	8,091	5,043	62%	3,547	3,560	7,107	5,400	5,501	10,901	4,033	4,310	8,343	8,278	6,902	15,180	373	247	620	21,631	20,520	42,151
	Yusif Batil	9,404	4,798	51%	3,826	4,032	7,858	5,874	6,132	12,006	4,027	4,045	8,072	9,856	7,867	17,723	954	1,139	2,093	24,537	23,215	47,752
	Doro	13,795	7,758	56%	5,572	5,832	11,404	8,331	8,866	17,197	5,307	5,462	10,769	12,928	10,050	22,978	702	582	1,284	32,840	30,792	63,632
	Gendrassa	3,982	2,157	54%	1,462	1,502	2,964	2,274	2,446	4,720	1,629	1,540	3,169	3,971	3,002	6,973	346	414	760	9,682	8,904	18,586
	Gorom	5	-	5	1	2	3	3	2	5	2	-	2	1	4	5	-	1	1	7	9	16
	Juba	2,285	216	9%	94	79	173	199	191	390	132	126	258	404	2,060	2,464	5	104	109	834	2,560	3,394
	Kaya	5,252	2,775	53%	2,008	2,197	4,205	2,948	3,141	6,089	2,044	2,013	4,057	5,310	3,792	9,102	490	653	1,143	12,800	11,796	24,596
	Kodok	538	326	61%	-	-	-	273	285	558	224	182	406	473	401	874	40	37	77	1,010	905	1,915
	Lasu	239	58	24%	12	4	16	103	103	206	67	90	157	109	219	328	1	4	5	292	420	712
	Makpandu	158	46	29%	48	67	115	106	106	212	80	63	143	142	177	319	-	7	7	376	420	796
	Maridi	67	25	37%	1	1	2	19	13	32	14	16	30	28	46	74	-	2	2	62	78	140
	Pamir	7,685	5,575	73%	3,675	3,679	7,354	4,936	5,050	9,986	3,380	3,126	6,506	7,308	4,621	11,929	328	200	528	19,627	16,676	36,303
	Yei	285	56	20%	43	46	89	97	123	220	89	85	174	96	264	360	-	9	9	325	527	852
Yida	8,235	6,398	78%	3,035	3,134	6,169	6,561	6,716	13,277	4,477	4,105	8,582	9,786	3,781	13,567	430	261	691	24,289	17,997	42,286	
<b>Total</b>	<b>60,021</b>	<b>35,231</b>	<b>59%</b>	<b>23,324</b>	<b>24,135</b>	<b>47,459</b>	<b>37,124</b>	<b>38,675</b>	<b>75,799</b>	<b>25,505</b>	<b>25,163</b>	<b>50,668</b>	<b>58,690</b>	<b>43,186</b>	<b>101,876</b>	<b>3,669</b>	<b>3,660</b>	<b>7,329</b>	<b>148,312</b>	<b>134,819</b>	<b>283,131</b>	
Others*	Others*	264	26	10%	12	13	25	15	6	21	-	2	2	54	234	288	1	10	11	82	265	347
	<b>Total</b>	<b>264</b>	<b>26</b>	<b>10%</b>	<b>12</b>	<b>13</b>	<b>25</b>	<b>15</b>	<b>6</b>	<b>21</b>	<b>-</b>	<b>2</b>	<b>2</b>	<b>54</b>	<b>234</b>	<b>288</b>	<b>1</b>	<b>10</b>	<b>11</b>	<b>82</b>	<b>265</b>	<b>347</b>
<b>Grand Total</b>	<b>67,281</b>	<b>39,164</b>	<b>58%</b>	<b>24,349</b>	<b>25,223</b>	<b>49,572</b>	<b>40,051</b>	<b>41,681</b>	<b>81,732</b>	<b>27,383</b>	<b>27,074</b>	<b>54,457</b>	<b>64,539</b>	<b>47,545</b>	<b>112,084</b>	<b>4,215</b>	<b>4,053</b>	<b>8,268</b>	<b>160,537</b>	<b>145,576</b>	<b>306,113</b>	

\* Refers to refugees from Uganda, Somalia, Eritrea, Syria, Burundi and Egypt spread in Gorom, Lasu, Juba, Makpandu and Doro.

# Asylum Seekers Population by Country of Origin, Sex and Age Group in South Sudan

as of the 31-October-2020



Country of Origin	Location	Principal Applicants			Persons																	
		Total Cases	Remaining		0 - 4 years			5 - 11 years			12 - 17 years			18 - 59 years			60 years +			Total		
			Cases	%	F	M	T	F	M	T	F	M	T	F	M	T	F	M	T	F	M	T
BURUNDI	Juba	741	21	3%	16	10	26	10	12	22	5	4	9	74	722	796	0	0	0	105	748	853
	Total	741	21	3%	16	10	26	10	12	22	5	4	9	74	722	796	-	-	-	105	748	853
CHAD	Juba	1	-	0%	-	-	-	-	-	-	-	-	-	-	1	1	-	-	-	-	1	1
	Total	1	-	3%	-	-	-	-	-	-	-	-	-	-	1	1	-	-	-	-	1	1
CAMEROON	Juba	2	-	0%	-	-	-	-	-	-	-	-	-	2	2	-	-	-	-	2	2	
	Makpandu	2	-	0%	-	-	-	-	-	-	-	-	-	2	2	-	-	-	-	2	2	
	Total	4	-	0%	-	-	-	-	-	-	-	-	-	4	4	-	-	-	-	4	4	
ERITREA	Juba	1,939	376	18%	86	130	216	56	63	119	3	9	12	538	1,540	2,082	7	62	69	690	1,804	2,494
	Makpandu	4	-	0%	-	-	-	-	-	-	-	-	-	4	4	-	-	-	-	-	-	4
	Total	1,943	376	19%	86	130	216	56	63	119	3	9	12	538	1,544	2,086	7	62	69	690	1,804	2,498
ETHIOPIA	Doro	1	-	0%	-	-	-	-	-	-	-	-	-	1	1	-	-	-	-	1	1	
	Juba	272	61	18%	8	16	24	11	9	20	1	-	1	114	210	324	-	2	2	134	237	371
	Makpandu	2	-	0%	-	-	-	-	-	-	-	-	-	2	2	-	-	-	-	2	2	
	Total	275	61	22%	8	16	24	11	9	20	1	-	1	114	213	327	-	2	2	134	240	374
SOMALIA	Juba	30	1	3%	-	-	-	-	-	-	-	-	-	1	29	30	-	-	-	1	29	30
	Total	30	1	3%	-	-	-	-	-	-	-	-	-	1	29	30	-	-	-	1	29	30
SUDAN	Juba	7	-	0%	-	1	1	-	-	-	-	-	-	2	5	7	-	2	2	2	8	10
	Pamir	-	-	0%	-	-	-	-	-	-	-	-	-	4	4	-	-	-	-	4	4	
	Total	7	-	0%	-	1	1	-	-	-	-	-	-	2	9	11	-	2	2	2	12	14
SYRIA	Juba	1	-	0%	-	-	-	-	-	-	-	-	-	1	1	-	-	-	-	1	1	
	Makpandu	1	1	0%	-	-	-	-	-	-	-	-	-	1	1	-	-	-	1	-	1	
	Total	2	1	50%	-	-	-	-	-	-	-	-	-	2	2	-	-	-	1	1	2	
Egypt	Juba	1	-	0%	-	-	-	-	-	-	-	-	-	1	1	-	-	-	-	1	1	
	Juba	1	-	0%	-	-	-	-	-	-	-	-	-	1	1	-	-	-	-	1	1	
UGANDA	Juba	4	-	0%	2	-	2	-	-	-	-	-	1	4	5	-	-	-	3	4	7	
	Juba	2	-	0%	-	-	-	-	-	-	-	-	-	2	2	-	-	-	-	2	2	
Yemen	Juba	2	-	0%	-	-	-	-	-	-	-	-	-	2	2	-	-	-	-	2	2	
	Total	8	-	0%	2	-	2	-	-	-	-	-	-	1	8	9	-	-	-	3	8	11
<b>Grand Total</b>		<b>3,011</b>	<b>460</b>	<b>1</b>	<b>112</b>	<b>157</b>	<b>269</b>	<b>77</b>	<b>84</b>	<b>161</b>	<b>9</b>	<b>13</b>	<b>22</b>	<b>730</b>	<b>2,532</b>	<b>3,266</b>	<b>7</b>	<b>66</b>	<b>73</b>	<b>936</b>	<b>2,847</b>	<b>3,787</b>