

Liberia Operation

Liberia - Côte d'Ivoire border

As of 7 March 2011



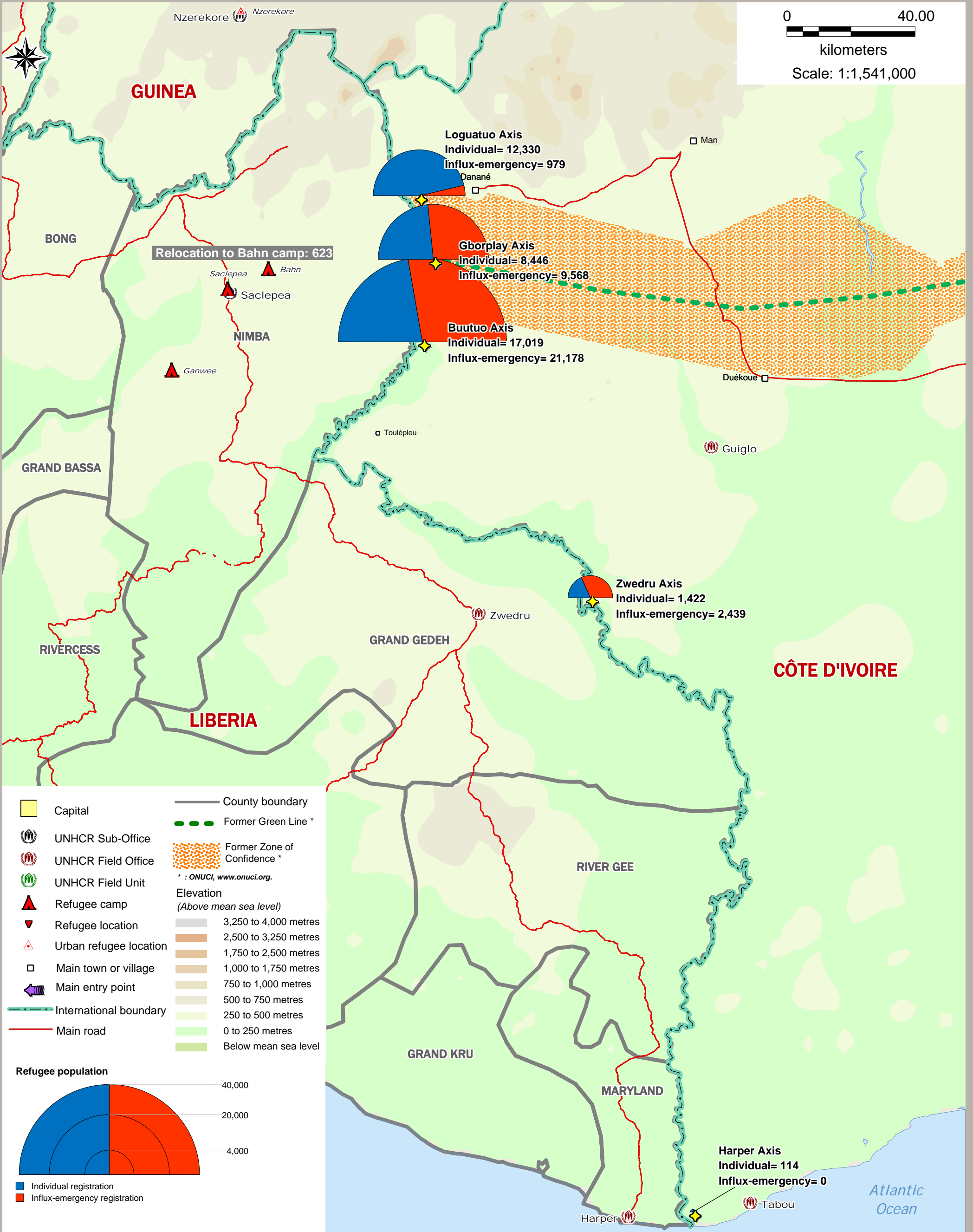
FIGSS
Field Information and
Coordination Support Section

Sources:
Statistics: UNHCR Saclepea
Geographic info: UNHCR,
Global Insight digital mapping
© 1998 Europa Technologies Ltd.
UNJLC - UNSDI-T

The boundaries and names shown
and the designations used on this
map do not imply official endorsement
or acceptance by the United Nations.



0 40.00
kilometers
Scale: 1:1,541,000



- Capital
- UNHCR Sub-Office
- UNHCR Field Office
- UNHCR Field Unit
- Refugee camp
- Refugee location
- Urban refugee location
- Main town or village
- Main entry point
- International boundary
- Main road
- County boundary
- Former Green Line *
- Former Zone of Confidence *
- * : ONUCI, www.onuci.org.
- Elevation**
(Above mean sea level)
- 3,250 to 4,000 metres
- 2,500 to 3,250 metres
- 1,750 to 2,500 metres
- 1,000 to 1,750 metres
- 750 to 1,000 metres
- 500 to 750 metres
- 250 to 500 metres
- 0 to 250 metres
- Below mean sea level

