

# COVID-19 RESPONSE IN REFUGEE SETTINGS - AS OF JUNE 15, 2020

## STEP 1

### PREVENTION: Community Engagement & Awareness Raising

#### COMMUNICATING WITH COMMUNITIES

100% of refugees known to UNHCR were reached through all social media platforms with information on

- COVID-19 symptoms and transmission
- Hygiene awareness and prevention methods
- Diagnostic and treatment procedures
- Government instructions on movements and curfew
- Self-isolation procedures

Call Center - The joint UNHCR/WFP call center responded to more than **31,000** calls related to COVID-19 assistance since the beginning of March 2020.

#### AWARENESS SESSIONS, HYGIENE KITS DISTRIBUTIONS AND COMMUNITY ENGAGEMENT

Humanitarian agencies conducted hygiene promotion and awareness sessions as well as hygiene kits distribution in informal tented settlements, and other similar sites reaching 302,218 individuals living in such overcrowded conditions.

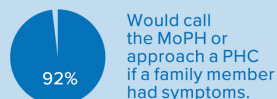
100% of the population living in informal settlements reached

- 307,338 persons
- 61,467 families
- 6,601 informal tented settlements
- 851 collective shelters

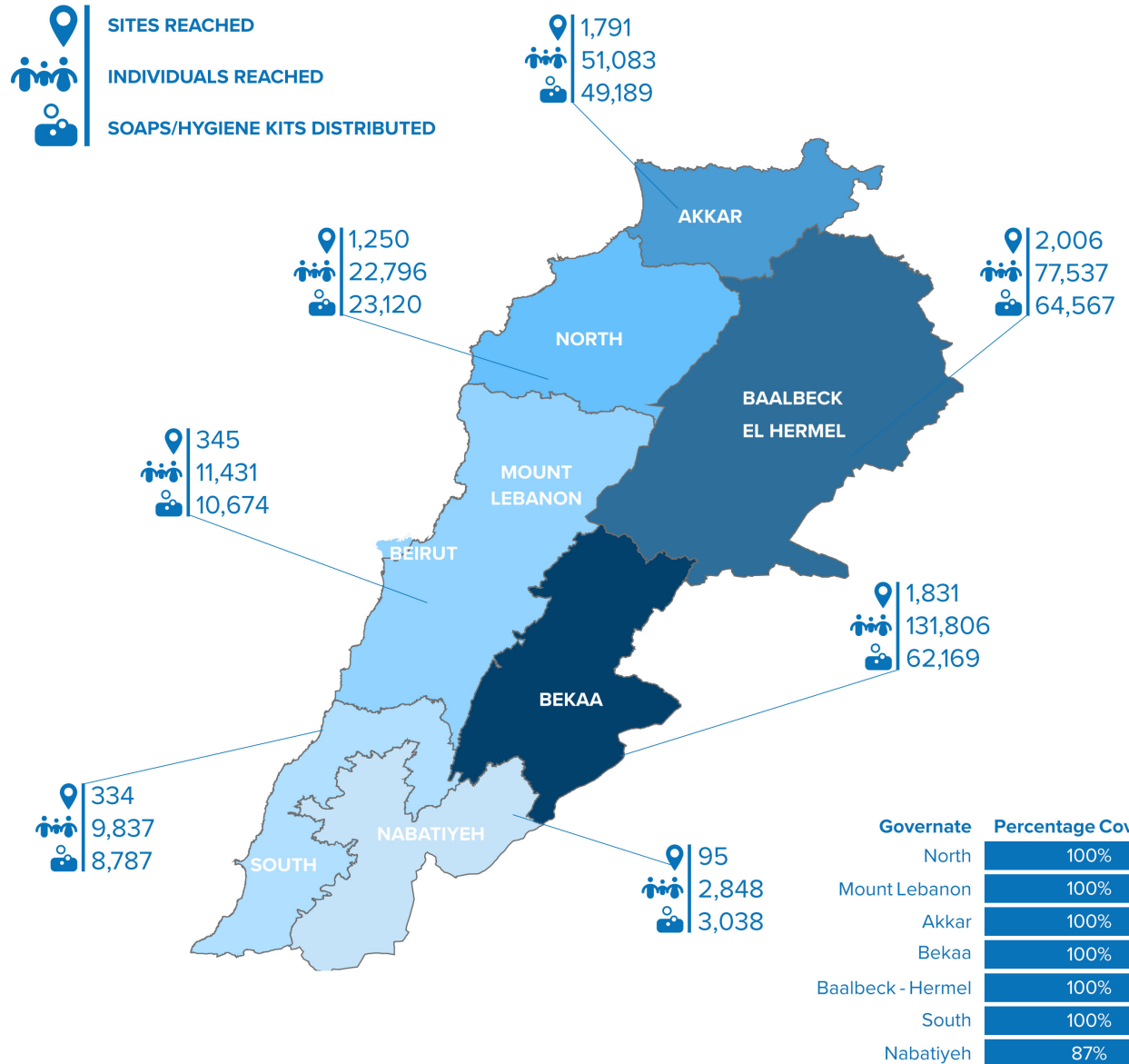
78% of the refugee population, living in private accommodation targeted.

- 650 UNHCR staff and frontline workers trained
- 32 training sessions for health and non-health workers
- 4,599 refugees trained and mobilized
- Rapid Response Teams established in 1,315 ca'dastres
- more than 450 refugees with medical background doing community health surveillance

#### REFUGEES AWARENESS



## DISTRIBUTION MAP



## STEP 2

### CONTAINING TRANSMISSION: ISOLATION PROCEDURES IN OVERCROWDED SETTINGS

#### GUIDANCE ON ISOLATION

Standard Operating Procedures on isolation and quarantining of refugees confirmed or suspected of having COVID-19 finalised in compliance with national guidelines.

- LEVEL 1 Household Level
- LEVEL 2 Community Level
- LEVEL 3 Municipal Level
- LEVEL 4 Full Quarantine

User Guide for refugees on the isolation and quarantining procedures shared with all refugees known to UNHCR and humanitarian partners providing support.

#### MANAGEMENT OF ISOLATION SITES

Terms Of Reference for site management finalized in compliance with national guidelines and through a consultative process outlining the administrative, management and service delivery accountabilities and responsibilities for Level 3 isolation facilities.

#### SUPPORTING COMMUNITIES' CAPACITIES TO ISOLATE

Capacity of **10,000** contingency shelter kits ready to be deployed within hours to support L1, L2 and L4 isolation situations hence a capacity of **1500** to respond to **4500** L2 Covid-19 cases.

More than **450** refugees with medical background mobilized and trained on isolation procedures and doing community health surveillance.

**1,759** site community groups of 3 to 5 refugee volunteers established across the country to play an active role on isolation procedures.

Rapid Response Teams of humanitarian partners established and mobilized in **1315** out of **1612** cadastres, ready to support on isolation procedures.

Personal Protective Equipment (PPEs) procured for all UNHCR staff, health workers and Rapid Response Team members.

Distribution of food/hygiene parcels with humanitarian partners, targeting **10,000** vulnerable families.

Additional contribution to cover **3 months** of cash assistance targeting **11,500** vulnerable refugee families to help them cope with the emergency situation.

#### SUPPORT SAMPLE TESTING IN OVERCROWDED SETTINGS

UNHCR is facilitating sample COVID-19 testing for refugees living in overcrowded settings together with the MoPH at a planned rate of **200 PCR tests per day** starting 28 May over a period of 4 to 6 weeks.

**82** sites covered across the country. **2472** samples collected in the country. **1923** results received, all negative.

\*Any prefabricated, rubhalls or additional structures established will be dismantled when no longer required for isolation within the national COVID-19 response.

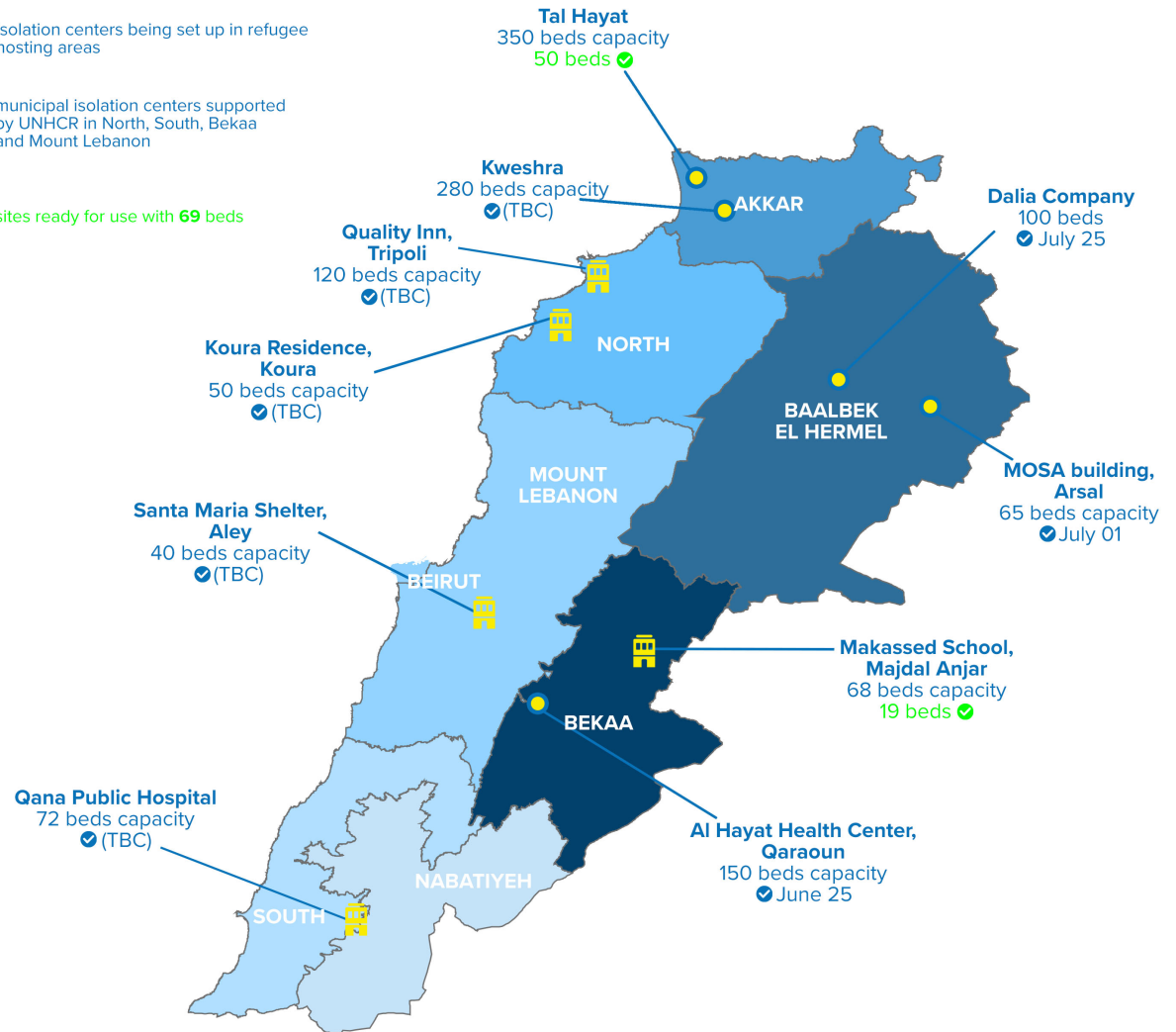
## MAP OF SUPPORT FOR ISOLATION CAPACITIES

**22%** of Syrian refugees in Lebanon live in informal settlements and collective shelters

**5** isolation centers being set up in refugee hosting areas

**5** municipal isolation centers supported by UNHCR in North, South, Bekaa and Mount Lebanon

**2** sites ready for use with **69** beds



**467** sites assessed for L2 isolation capacities. **211** suitable sites retained

Operational  
Operational by

## STEP 3

### TREATMENT AND CASE MANAGEMENT

#### EXPANSION OF THE MOPH COVID-19 HOTLINE



Expansion of the MoPH Covid-19 hotline capacity to take up to **4,500 calls/day**, with **10 additional trained nurses** to serve as operators and a referral system for refugees calling being immediately transferred to UNHCR for action.

#### SUPPORT TO HOSPITALS NETWORK

UNHCR will expand hospital capacity to benefit COVID-19 patients from both refugee and Lebanese communities, through:



The design, construction and equipment of temporary COVID units annexed to selected hospitals, or rehabilitation of existing unused structure within hospitals to be COVID-19 units.



Personal Protection Equipment (PPEs), renewable medical supplies and medicines to enable them to manage COVID-19 cases.

UNHCR will cover **100% of test and treatment** for refugee patients.

#### PROJECTION



A target of **800 additional hospital beds** and **100 additional ICU beds** across Lebanon distributed over 3 phases.



Priority phase 1 is targeting **5 governmental hospitals** in Tripoli, Halba, Baalbek, Beirut and Saida.

Zahle Governmental Hospital is currently under assessment for an addition of **60 hospital beds** and **10 ICU beds** in phase 1.

#### PROGRESS



Construction **work in progress** in Tripoli, Halba and Baalbek governmental hospitals to set up prefabricated units for the treatment of COVID-19 cases. In Beirut and Saida, **rehabilitation work** is ongoing to increase hosting capacity for Covid-19 patients.

Medicine stock for over **22,000 Covid-19 patients**, **20 portable ventilators** received in country as part of the medical items procured by UNHCR for the response. **100 ICU beds** and **800 hospital beds** received in country.



## PLANNED HOSPITAL NETWORK EXPANSION - PHASE 1

