

**Kalobeyei  
Integrated  
Socio-Economic  
Development Plan  
(KISED P)**

**Biannual Steering  
Committee  
Meeting**

**22<sup>nd</sup> October, 2019**

**Lodwar**

# AGENDA

- Introductions and Welcome
- KISED P Mid-Term Report
  - Progress Report
  - M&E
- Feedback from Quarterly TWG Meetings
- Resource Mobilization & financial tracking
- Concluding remarks





# TOWARDS KISED MID-TERM REPORT

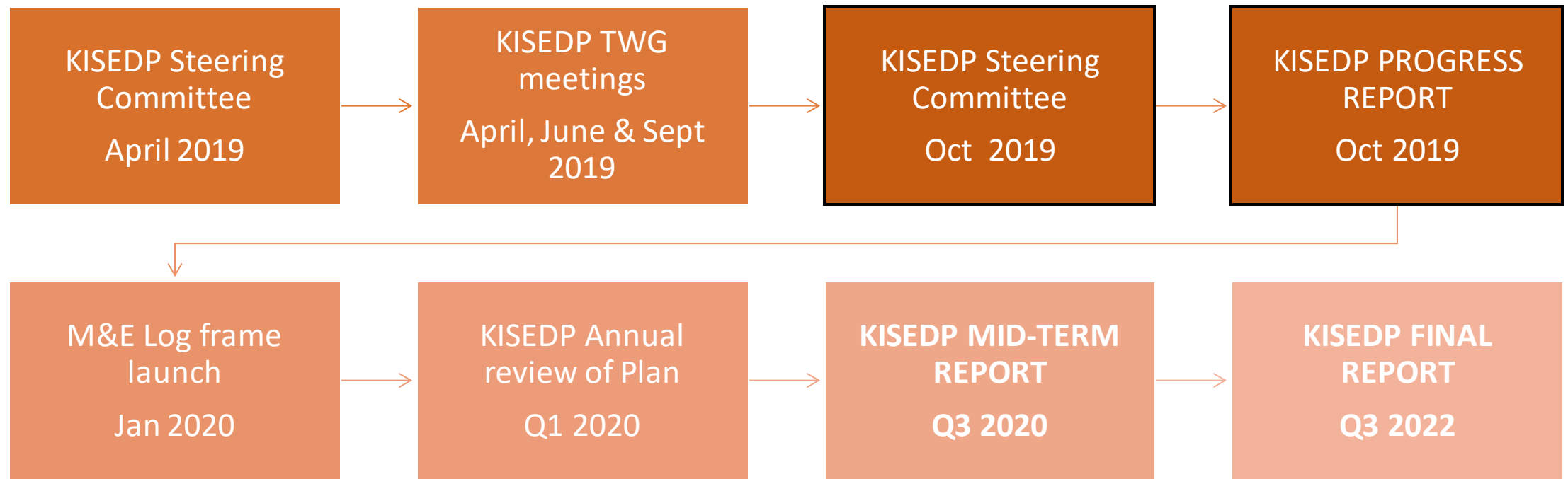
PROGRESS  
REPORT

M&E LOG FRAME

Eva Lescauwaet  
Charles Ekai  
KISED secretariat

# TIMELINE

---



# ENHANCED EVIDENCE

- Socio-economic study “Yes, in My Backyard”
- IFC Kakuma as a Marketplace study
- Socio-economic profiling
- Feasibility for water investments
- GIS database for water points
- Energy assessment
- Value chain analysis
- Livelihood database
- Evaluations



# IMPROVED CONDUCTIVE ENVIRONMENT

- Increased public participation and inclusivity
- Strengthened private sector engagement
- Improved legislative framework
- Drafted Energy sector Plan
- Improved urbanization
- Increased access to financial services

7 AFFORDABLE AND  
CLEAN ENERGY



8 DECENT WORK AND  
ECONOMIC GROWTH



4 QUALITY  
EDUCATION



3 GOOD HEALTH  
AND WELL-BEING



6 CLEAN WATER  
AND SANITATION



11 SUSTAINABLE CITIES  
AND COMMUNITIES



# CURRENT STATUS IN TURKANA WEST FOR INCLUSIVE SERVICE DELIVERY SYSTEMS & SOCIO-ECONOMIC DEVELOPMENT



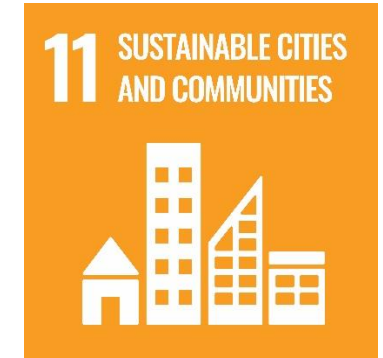
- 49 Facilities
- 275 Qualified staff
- 416 CHS
- Universal Health Care and NHIF
- Specialized staff/equipment
- DHIS and RHIS



- 122 Facilities
- 675 Qualified staff
- 219 incentive workers
- Integrated Education Policy
- Improved ratio's
- KEMIS



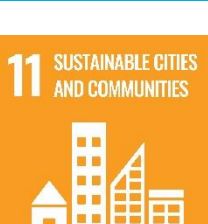
- 158 boreholes (26 hybrid-solar systems)
- 5 water harvesting structures/smart irrigation systems
- 4136 additional latrines
- GIS database



- 2708 permanent shelters
- Plans for municipality
- Spatial Plan
- Two Mini-grids
- Road infrastructure

# HUMAN & FINANCIAL CAPITAL DEVELOPMENT

- Approx. 10,000 refugees and host trained in vocational skills, business and financial literacy
- Strengthened local capacities
- Cash transfers to strengthen local economy and self-reliance
- Access to higher and specialized education
- 100 percent of Kalobeyei refugees access financial services and host traders have access to Bashara loans





# KEY PRIORITIES

- Strengthen Government and community's capacities
- Invest in sustainable models for inclusive service delivery
- Increase investments in longer-term and innovative solutions for enabling sectors
- Strengthen land governance and management
- Strengthen regulatory and legislative frameworks
- Attract private sector investment
- Conduct a market system analysis
- Improve access to documentation and information
- Scale up of cash based interventions to further strengthen local economies and increase self-reliance
- Strengthen evidence, M&E and reporting

# MONITORING & EVALUATION

## 2018

M&E policy revised

Indicator handbook

## 2019

County M&E unit in place

County Annual M&E report

Draft M&E Bill

**KISED P M&E log  
frame  
aligned w/ CIDP-SDGs**

## Q1 2020

Expansion of KISED P  
secretariat **with a M&E  
Officer**

KISED P M&E -  
financial tracking tool  
in place



# FEEDBACK THEMATIC WORKING GROUP MEETINGS

TWG Chairs

## Thematic Working Groups

- Health
- Education
- WASH
- Protection
- Agriculture, Livestock and NRM
- Spatial Planning, Infrastructure and Shelter
- Sustainable Energy Solutions
- Private sector & Entrepreneurship



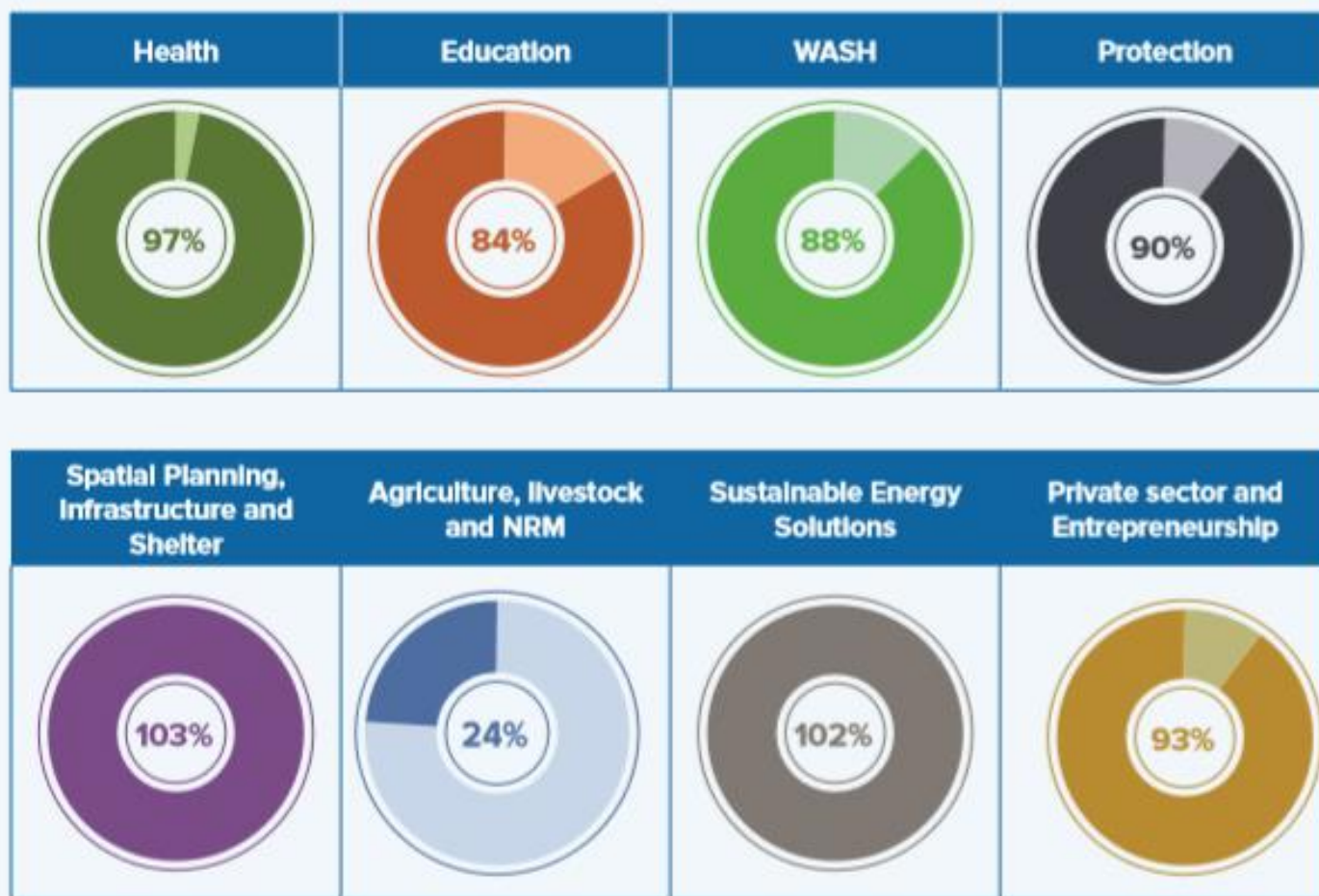
# RESOURCE MOBILISATION & FINANCIAL TRACKING

Intro - Robert Lotelengo - CECM  
Finance and Economic Planning  
Session - Chair and co-chairs

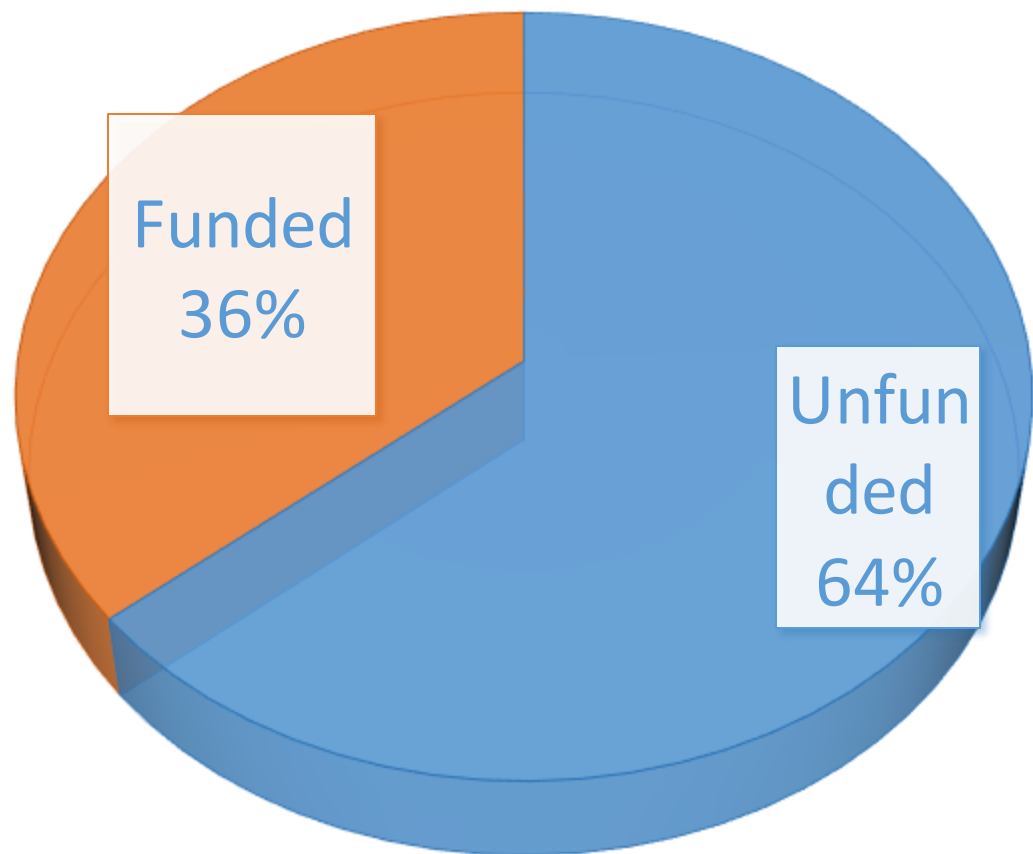
# Financial Summary 2018

- January - December 2018
- Revised planned budget = 62.7\* million USD
- 83 percent of resources received
  - Government: 8mil USD
  - International community: 44.2 mil USD

Resources received by component (Jan – Dec 2018)



# 2019 Funding GAP



	Planned Budget (in mil USD)	Funded ( June 2019)
Health	12.4	53%
Education	16.4	46%
WASH	15.4	25%
Protection	7.7	64%
Spatial, Infra & Shelter	10.1	36%
Agriculture, Livestock, NRM	9.9	15%
Sustainable Energy Solutions	7.3	19%
Private sector & Entrepreneurship	28.3	35%