

## Statistical Summary

as of  
31-Aug-19

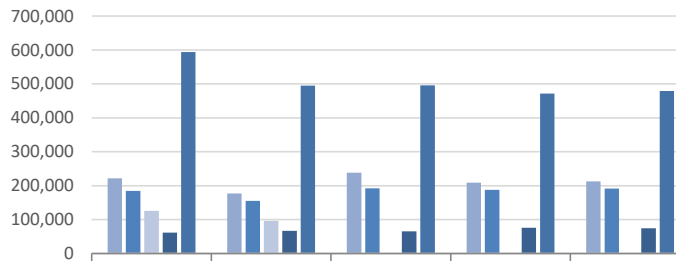
### Refugees and Asylum Seekers in Kenya

	Total	Dadaab	Kakuma	Urban	
<b>A. Refugees and Asylum Seekers</b>	<b>479,194</b>	<b>212,936</b>	<b>191,500</b>	<b>74,758</b>	- Page 2
<b>B. Registration</b>	<b>19,760</b>	<b>16</b>	<b>10,878</b>	<b>8,866</b>	- Page 6
<b>C. Refugee Status Determination</b>					- Page 7
1. Applied	9,529	46	3,152	6,331	
2. Recognized	3,593	0	756	2,837	
3. Rejected	0	0	0	0	
4. Pending	50,511	1,266	22,360	26,885	
<b>D. 2019 Resettlement Submissions</b>	<b>2,481</b>				- Page 8
<b>E. 2019 Resettlement Departures</b>	<b>976</b>				- Page 9
<b>F. 2019 Voluntary Repatriation</b>	<b>1,889</b>	<b>1592</b>	<b>280</b>	<b>17</b>	- Page 10

## REFUGEES AND ASYLUM SEEKERS IN KENYA BY COUNTRY OF ORIGIN AND LOCATION

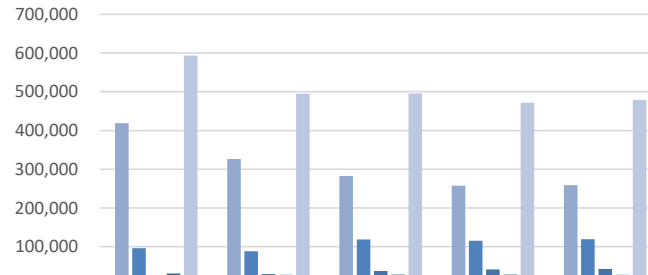
Country of Origin	2015					2016					2017				2018				2019			
	Alinjugur	Dadaab	Kakuma	Nairobi	Total	Alinjugur	Dadaab	Kakuma	Nairobi	Total	Dadaab	Kakuma	Nairobi	Total	Dadaab	Kakuma	Nairobi	Total	Dadaab	Kakuma	Urban	Total
<b>Total</b>	<b>126,042</b>	<b>221,938</b>	<b>184,550</b>	<b>61,351</b>	<b>593,881</b>	<b>95,979</b>	<b>176,785</b>	<b>154,947</b>	<b>67,152</b>	<b>494,863</b>	<b>238,152</b>	<b>192,167</b>	<b>65,109</b>	<b>495,428</b>	<b>208,633</b>	<b>187,349</b>	<b>75,742</b>	<b>471,724</b>	<b>212,936</b>	<b>191,500</b>	<b>74,758</b>	<b>479,194</b>
Somalia	122,663	208,741	54,886	32,623	<b>418,913</b>	93,342	165,388	37,813	30,019	<b>326,562</b>	229,064	34,146	19,733	<b>282,943</b>	200,886	33,844	22,588	<b>257,318</b>	205,178	34,143	19,389	<b>258,710</b>
South Sudan	32	1,277	93,413	1,043	<b>95,765</b>	13	1,095	84,983	2,300	<b>88,391</b>	990	112,118	5,454	<b>118,562</b>	978	108,450	5,858	<b>115,286</b>	936	111,714	6,640	<b>119,290</b>
DR Congo	154	187	9,861	14,536	<b>24,738</b>	68	150	9,753	19,346	<b>29,317</b>	114	12,752	24,063	<b>36,929</b>	93	12,232	28,980	<b>41,305</b>	81	12,715	29,905	<b>42,701</b>
Ethiopia	3,094	11,399	7,595	8,385	<b>30,473</b>	2,525	9,873	5,366	9,473	<b>27,237</b>	7,759	10,232	9,651	<b>27,642</b>	6,478	10,502	10,721	<b>27,701</b>	6,541	10,104	10,657	<b>27,302</b>
Burundi	70	138	6,804	1,300	<b>8,312</b>	14	120	6,164	2,163	<b>8,461</b>	83	10,787	2,611	<b>13,481</b>	65	10,020	3,237	<b>13,322</b>	79	10,784	3,559	<b>14,422</b>
Sudan	-	74	10,023	169	<b>10,266</b>	1	58	9,078	169	<b>9,306</b>	53	9,867	166	<b>10,086</b>	46	9,879	181	<b>10,106</b>	33	9,824	173	<b>10,030</b>
Uganda	12	67	1,158	670	<b>1,907</b>	7	72	1,159	732	<b>1,970</b>	57	1,443	720	<b>2,220</b>	65	1,501	846	<b>2,412</b>	70	1,417	939	<b>2,426</b>
Eritrea	-	18	126	1,481	<b>1,625</b>	-	9	55	1,526	<b>1,590</b>	8	53	1,273	<b>1,334</b>	4	192	1,607	<b>1,803</b>	4	35	1,755	<b>1,794</b>
Rwanda	14	20	615	960	<b>1,609</b>	6	17	505	1,102	<b>1,630</b>	16	642	1,015	<b>1,673</b>	11	612	1,117	<b>1,740</b>	11	639	1,133	<b>1,783</b>
Other	3	17	69	184	<b>273</b>	3	3	71	322	<b>399</b>	8	127	423	<b>558</b>	7	117	607	<b>731</b>	3	125	608	<b>736</b>

TREND BY LOCATION



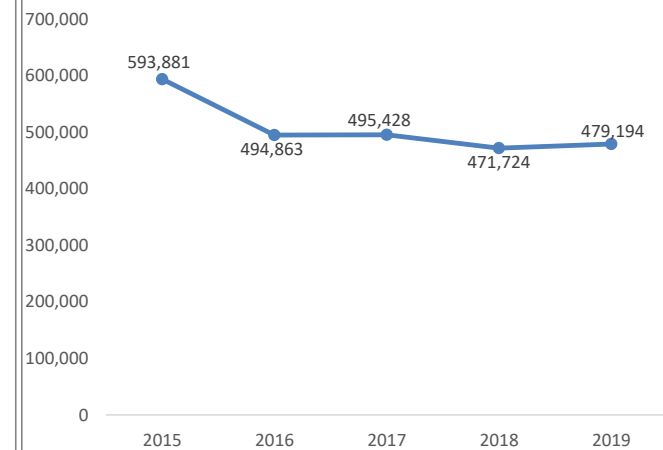
	2015	2016	2017	2018	2019
Dadaab	221,938	176,785	238,152	208,633	212,936
Kakuma	184,550	154,947	192,167	187,349	191,500
Alinjugur	126,042	95,979			
Urban	61,351	67,152	65,109	75,742	74,758
Total	593,881	494,863	495,428	471,724	479,194

TREND BY MAJOR COUNTRIES OF ORIGIN



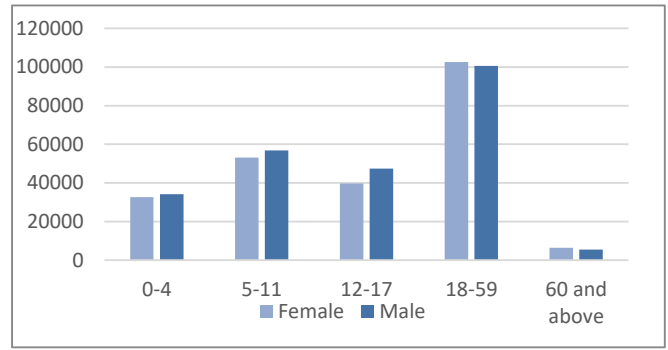
	2015	2016	2017	2018	2019
Somalia	418,913	326,562	282,943	257,318	258,710
South Sudan	95,765	88,391	118,562	115,286	119,290
DR Congo	24,738	29,317	36,929	41,305	42,701
Ethiopia	30,473	27,237	27,642	27,701	27,302
Total	593,881	494,863	495,428	471,724	479,194

TREND SINCE 2015

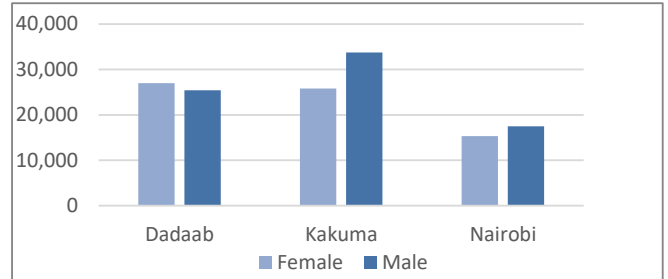


## REFUGEES AND ASYLUM SEEKERS IN KENYA : DEMOGRAPHIC BREAKDOWN

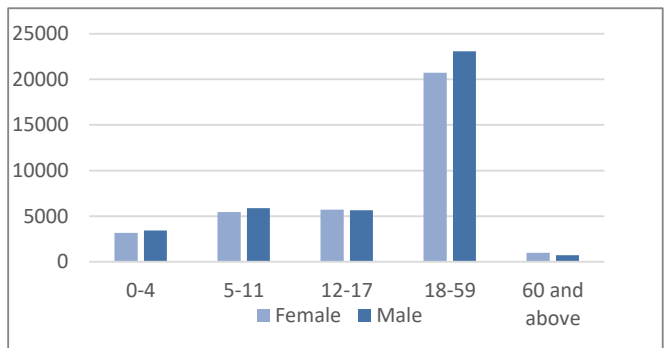
Total Kenya	Age Group	Sex				Total	
		Female		Male			
		#	%	#	%	#	%
		0-4	32,689	6.8%	34,189	7.1%	66,878
5-11	53,184	11.1%	56,768	11.8%	109,952	22.9%	
12-17	39,777	8.3%	47,430	9.9%	87,207	18.2%	
18-59	102,601	21.4%	100,605	21.0%	203,206	42.4%	
60 and above	6,478	1.4%	5,473	1.1%	11,951	2.5%	
<b>Total</b>	<b>234,729</b>	<b>49.0%</b>	<b>244,465</b>	<b>51.0%</b>	<b>479,194</b>		



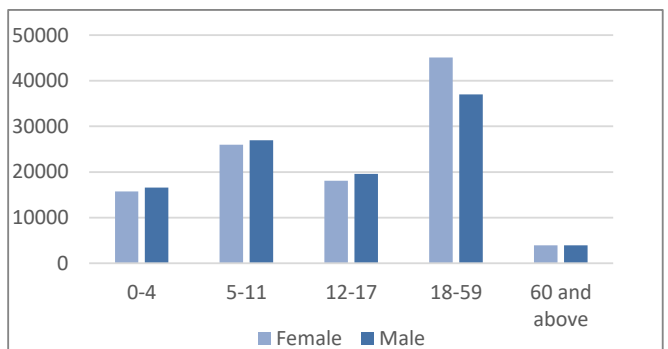
18 - 35 years	Site Name	Sex				Total	
		Female		Male			
		#	%	#	%	#	%
		Dadaab	26,960	18.6%	25,437	17.6%	52,397
Kakuma	25,836	17.8%	33,726	23.3%	59,562	41.1%	
Nairobi	15,343	10.6%	17,474	12.1%	32,817	22.7%	
<b>Total</b>	<b>68,139</b>	<b>47.1%</b>	<b>76,637</b>	<b>52.9%</b>	<b>144,776</b>		



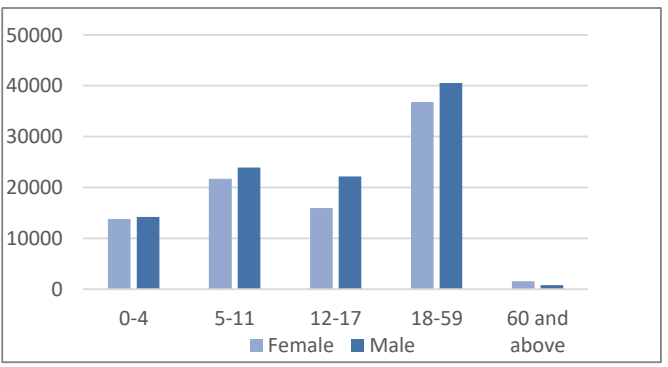
Urban	Age Group	Sex				Total	
		Female		Male			
		#	%	#	%	#	%
		0-4	3,157	4.2%	3,420	4.6%	6,577
5-11	5,454	7.3%	5,884	7.9%	11,338	15.2%	
12-17	5,713	7.6%	5,642	7.5%	11,355	15.2%	
18-59	20,718	27.7%	23,064	30.9%	43,782	58.6%	
60 and above	975	1.3%	731	1.0%	1,706	2.3%	
<b>Total</b>	<b>36,017</b>	<b>48.2%</b>	<b>38,741</b>	<b>51.8%</b>	<b>74,758</b>		



Dadaab	Age Group	Sex				Total	
		Female		Male			
		#	%	#	%	#	%
		0-4	15,760	7.4%	16,583	7.8%	32,343
5-11	26,002	12.2%	26,964	12.7%	52,966	24.9%	
12-17	18,107	8.5%	19,602	9.2%	37,709	17.7%	
18-59	45,084	21.2%	36,992	17.4%	82,076	38.5%	
60 and above	3,931	1.8%	3,911	1.8%	7,842	3.7%	
<b>Total</b>	<b>108,884</b>	<b>51.1%</b>	<b>104,052</b>	<b>48.9%</b>	<b>212,936</b>		



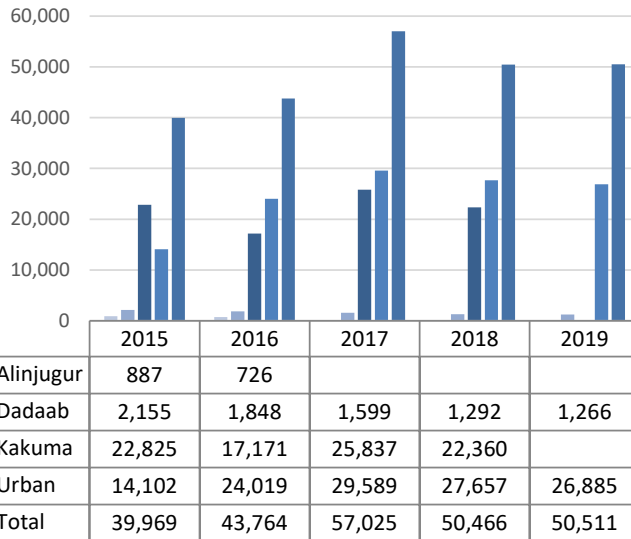
Kakuma	Age Group	Sex				Total	
		Female		Male			
		#	%	#	%	#	%
		0-4	13,772	7.2%	14,186	7.4%	27,958
5-11	21,728	11.3%	23,920	12.5%	45,648	23.8%	
12-17	15,957	8.3%	22,186	11.6%	38,143	19.9%	
18-59	36,799	19.2%	40,549	21.2%	77,348	40.4%	
60 and above	1,572	0.8%	831	0.4%	2,403	1.3%	
<b>Total</b>	<b>89,828</b>	<b>46.9%</b>	<b>101,672</b>	<b>53.1%</b>	<b>191,500</b>		



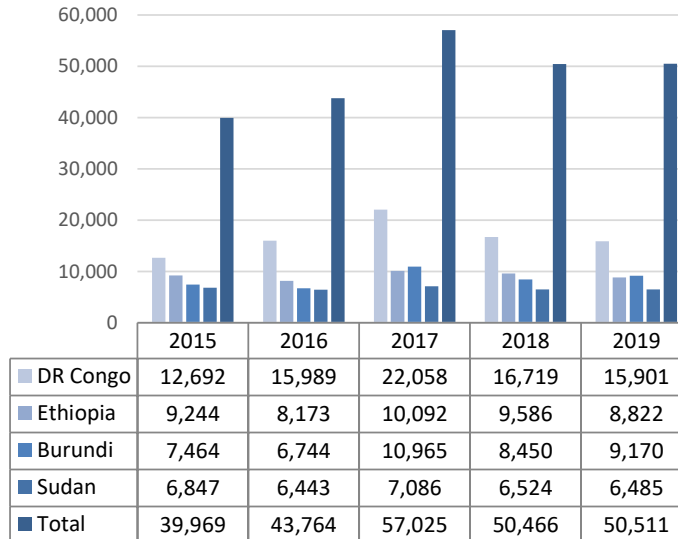
## ASYLUM SEEKERS STATISTICS BY COUNTRY OF ORIGIN AND LOCATION

Country of Origin	2015					2016					2017				2018				2019			
	Alinjugur	Dadaab	Kakuma	Nairobi	Total	Alinjugur	Dadaab	Kakuma	Nairobi	Total	Dadaab	Kakuma	Nairobi	Total	Dadaab	Kakuma	Nairobi	Total	Dadaab	Kakuma	Urban	Total
<b>Total</b>	<b>887</b>	<b>2,155</b>	<b>22,825</b>	<b>14,102</b>	<b>39,969</b>	<b>726</b>	<b>1,848</b>	<b>17,171</b>	<b>24,019</b>	<b>43,764</b>	<b>1,599</b>	<b>25,837</b>	<b>29,589</b>	<b>57,025</b>	<b>1,292</b>	<b>21,517</b>	<b>27,657</b>	<b>50,466</b>	<b>1,266</b>	<b>22,360</b>	<b>26,885</b>	<b>50,511</b>
DR Congo	122	17	4,302	8,251	<b>12,692</b>	39	16	2,523	13,411	<b>15,989</b>	14	4,222	17,822	<b>22,058</b>	8	3,465	13,246	<b>16,719</b>	6	3,807	12,088	<b>15,901</b>
Ethiopia	514	1,900	4,147	2,683	<b>9,244</b>	425	1,583	2,133	4,032	<b>8,173</b>	1,129	3,786	5,177	<b>10,092</b>	881	3,286	5,419	<b>9,586</b>	877	3,156	4,789	<b>8,822</b>
Burundi	63	97	6,323	981	<b>7,464</b>	11	38	4,901	1,794	<b>6,744</b>	27	8,763	2175	<b>10,965</b>	22	6,239	2,189	<b>8,450</b>	30	6,821	2,319	<b>9,170</b>
Sudan	-	9	6,806	32	<b>6,847</b>	-	2	6,385	56	<b>6,443</b>	2	7,021	63	<b>7,086</b>	2	6,455	67	<b>6,524</b>	2	6,431	52	<b>6,485</b>
Somalia	164	89	61	679	<b>993</b>	244	162	109	1,599	<b>2,114</b>	364	214	2,119	<b>2,697</b>	330	310	4,180	<b>4,820</b>	306	536	5,106	<b>5,948</b>
Uganda	9	9	744	508	<b>1,270</b>	1	10	783	545	<b>1,339</b>	9	1,311	533	<b>1,853</b>	6	1,124	439	<b>1,569</b>	6	1,047	465	<b>1,518</b>
Eritrea	-	3	57	336	<b>396</b>	-	2	12	495	<b>509</b>	2	15	632	<b>649</b>	2	158	936	<b>1,096</b>	2	10	974	<b>986</b>
Rwanda	14	11	344	427	<b>796</b>	6	10	281	613	<b>910</b>	13	400	663	<b>1,076</b>	7	404	681	<b>1,092</b>	7	450	623	<b>1,080</b>
Other	1	14	38	120	<b>173</b>	-	3	44	246	<b>293</b>	4	105	339	<b>448</b>	3	70	453	<b>526</b>	-	69	424	<b>493</b>
South Sudan	-	6	3	85	<b>94</b>	-	22	-	1,228	<b>1,250</b>	35	-	66	<b>101</b>	31	6	47	<b>84</b>	30	33	45	<b>108</b>

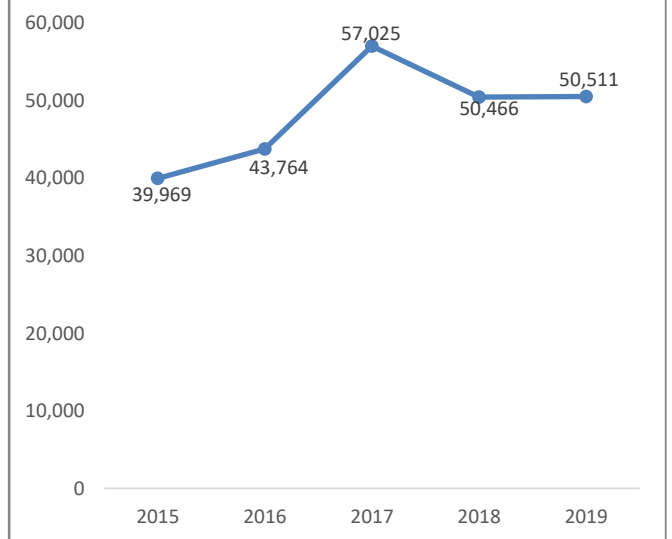
TREND BY LOCATION



TREND BY MAJOR COUNTRIES OF ORIGIN



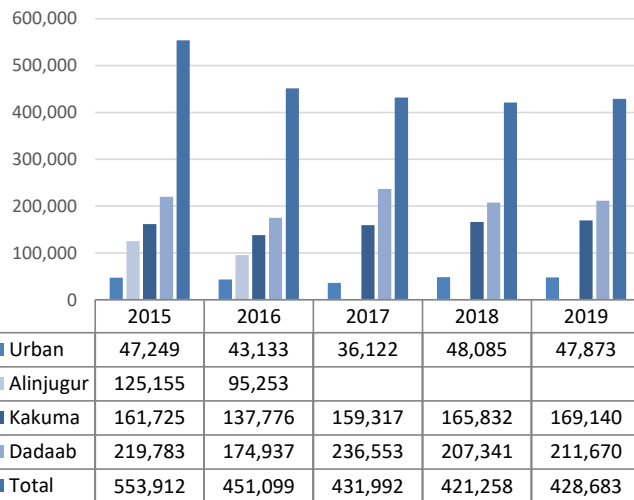
TREND SINCE 2015



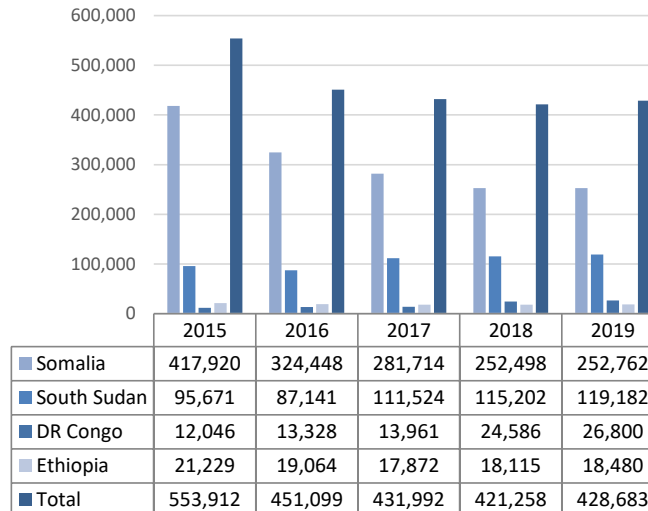
## REFUGEES IN KENYA BY COUNTRY OF ORIGIN AND LOCATION

Country of Origin	2015					2016					2017				2018				2019			
	Alinjugur	Dadaab	Kakuma	Nairobi	Total	Alinjugur	Dadaab	Kakuma	Nairobi	Total	Dadaab	Kakuma	Nairobi	Total	Dadaab	Kakuma	Nairobi	Total	Dadaab	Kakuma	Urban	Total
<b>Total</b>	<b>125,155</b>	<b>219,783</b>	<b>161,725</b>	<b>47,249</b>	<b>553,912</b>	<b>95,253</b>	<b>174,937</b>	<b>137,776</b>	<b>43,133</b>	<b>451,099</b>	<b>236,553</b>	<b>159,317</b>	<b>36,122</b>	<b>431,992</b>	<b>207,341</b>	<b>165,832</b>	<b>48,085</b>	<b>421,258</b>	<b>211,670</b>	<b>169,140</b>	<b>47,873</b>	<b>428,683</b>
<b>Somalia</b>	122,499	208,652	54,825	31,944	<b>417,920</b>	93,099	165,225	37,704	28,420	<b>324,448</b>	228,700	35,335	17,679	<b>281,714</b>	200,556	33,534	18,408	<b>252,498</b>	204,872	33,607	14,283	<b>252,762</b>
<b>South Sudan</b>	32	1,271	93,410	958	<b>95,671</b>	13	1,073	84,983	1,072	<b>87,141</b>	955	105,168	5,401	<b>111,524</b>	947	108,444	5,811	<b>115,202</b>	906	111,681	6,595	<b>119,182</b>
<b>DR Congo</b>	32	170	5,559	6,285	<b>12,046</b>	29	134	7,230	5,935	<b>13,328</b>	100	7,311	6,550	<b>13,961</b>	85	8,767	15,734	<b>24,586</b>	75	8,908	17,817	<b>26,800</b>
<b>Ethiopia</b>	2,580	9,499	3,448	5,702	<b>21,229</b>	2,099	8,291	3,233	5,441	<b>19,064</b>	6,630	6,684	4,558	<b>17,872</b>	5,597	7,216	5,302	<b>18,115</b>	5,664	6,948	5,868	<b>18,480</b>
<b>Burundi</b>	7	41	481	319	<b>848</b>	3	82	1,263	369	<b>1,717</b>	56	1,371	478	<b>1,905</b>	43	3,781	1,048	<b>4,872</b>	49	3,963	1,240	<b>5,252</b>
<b>Sudan</b>	-	65	3,217	137	<b>3,419</b>	1	56	2,693	113	<b>2,863</b>	51	2,768	105	<b>2,924</b>	44	3,424	114	<b>3,582</b>	31	3,393	121	<b>3,545</b>
<b>Uganda</b>	3	58	414	162	<b>637</b>	6	62	376	187	<b>631</b>	48	394	192	<b>634</b>	59	377	407	<b>843</b>	64	370	474	<b>908</b>
<b>Eritrea</b>	-	15	69	1,145	<b>1,229</b>	-	7	43	1,031	<b>1,081</b>	6	45	657	<b>708</b>	2	34	671	<b>707</b>	2	25	781	<b>808</b>
<b>Rwanda</b>	-	9	271	533	<b>813</b>	-	7	224	489	<b>720</b>	3	211	372	<b>586</b>	4	208	436	<b>648</b>	4	189	510	<b>703</b>
<b>Other</b>	2	3	31	64	<b>100</b>	3	-	27	76	<b>106</b>	4	30	130	<b>164</b>	4	47	154	<b>205</b>	3	56	184	<b>243</b>

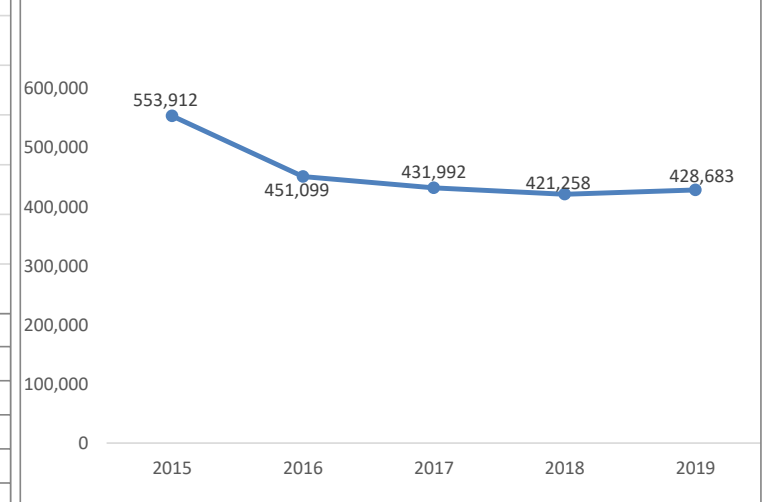
TREND BY LOCATION



TREND BY MAJOR COUNTRIES OF ORIGIN



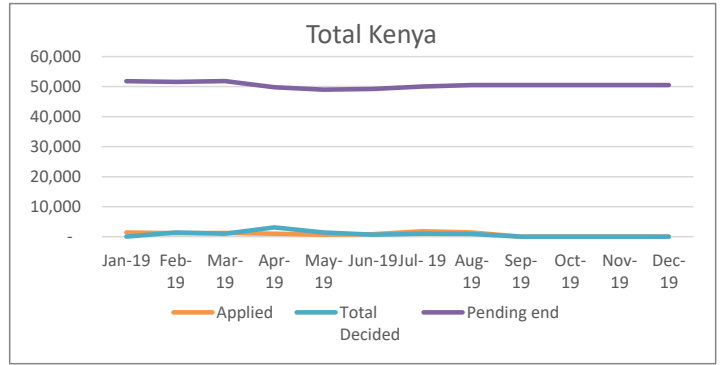
TREND SINCE 2015



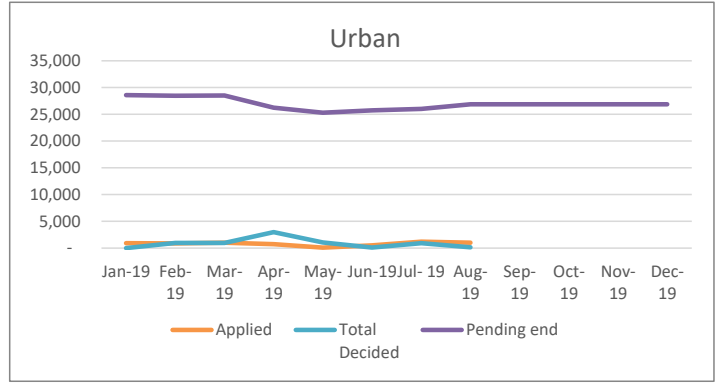


## Individual Asylum Applications and Refugee Status Determination Trend

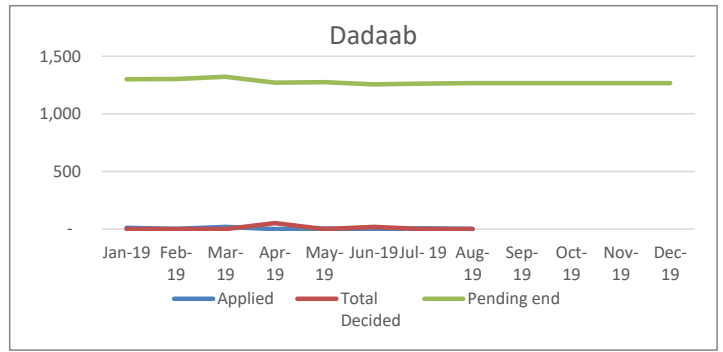
Total	Month	Pending begin	Applied	Reco-gnized	Reje-cted	Oth. Closed	Total Decided	Pending end
	Jan-19	50,466	1,364	5	-	4	9	51,821
	Feb-19	51,821	1,169	1	-	1,411	1,412	51,578
	Mar-19	51,578	1,244	698	-	271	969	51,853
	Apr-19	51,853	1,000	703	-	2,391	3,094	49,759
	May-19	49,759	668	1,163	-	264	1,427	49,000
	Jun-19	49,000	856	50	-	611	661	49,195
	Jul-19	49,195	1,804	504	-	483	987	50,012
	Aug-19	50,012	1,424	469	-	456	925	50,511
	Sep-19	50,511	-	-	-	-	-	50,511
	Oct-19	50,511	-	-	-	-	-	50,511
	Nov-19	50,511	-	-	-	-	-	50,511
	Dec-19	50,511	-	-	-	-	-	50,511
<b>Total</b>		<b>9,529</b>	<b>3,593</b>	<b>-</b>	<b>5,891</b>	<b>9,484</b>		



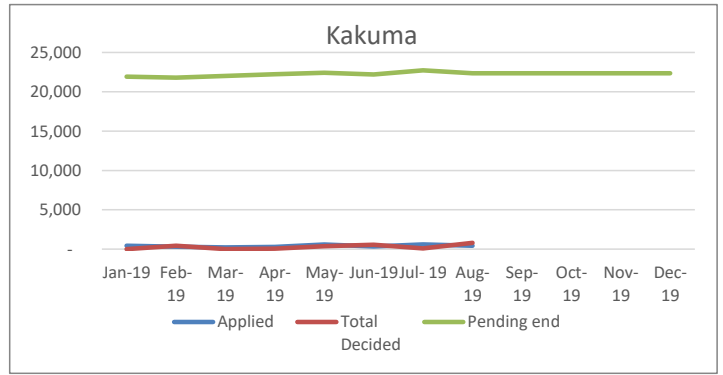
Urban	Month	Pending begin	Applied	Reco-gnized	Reje-cted	Oth. Closed	Total Decided	Pending end
	Jan-19	27,657	933	-	-	-	-	28,590
	Feb-19	28,590	858	1	-	971	972	28,476
	Mar-19	28,476	1,008	696	-	271	967	28,517
	Apr-19	28,517	726	703	-	2,285	2,988	26,255
	May-19	26,255	90	971	-	74	1,045	25,300
	Jun-19	25,300	520	35	-	53	88	25,732
	Jul-19	25,732	1,203	429	-	483	912	26,023
	Aug-19	26,023	993	2	-	129	131	26,885
	Sep-19	26,885						26,885
	Oct-19	26,885						26,885
	Nov-19	26,885						26,885
	Dec-19	26,885						26,885
<b>Total</b>		<b>6,331</b>	<b>2,837</b>	<b>-</b>	<b>4,266</b>	<b>7,103</b>		



Dadaab	Month	Pending begin	Applied	Reco-gnized	Reje-cted	Oth. Closed	Total Decided	Pending end
	Jan-19	1,292	10	-	-	1	1	1,301
	Feb-19	1,301	2	-	-	-	-	1,303
	Mar-19	1,303	19	-	-	-	-	1,322
	Apr-19	1,322	-	-	-	52	52	1,270
	May-19	1,270	5	-	-	-	-	1,275
	Jun-19	1,275	-	-	-	19	19	1,256
	Jul-19	1,256	7	-	-	-	-	1,263
	Aug-19	1,263	3	-	-	-	-	1,266
	Sep-19	1,266						1,266
	Oct-19	1,266						1,266
	Nov-19	1,266						1,266
	Dec-19	1,266						1,266
<b>Total</b>		<b>46</b>	<b>-</b>	<b>-</b>	<b>72</b>	<b>72</b>		



Kakuma	Month	Pending begin	Applied	Reco-gnized	Reje-cted	Oth. Closed	Total Decided	Pending end
	Jan-19	21,517	421	5	-	3	8	21,930
	Feb-19	21,930	309	-	-	440	440	21,799
	Mar-19	21,799	217	2	-	-	2	22,014
	Apr-19	22,014	274	-	-	54	54	22,234
	May-19	22,234	573	192	-	190	382	22,425
	Jun-19	22,425	336	15	-	539	554	22,207
	Jul-19	22,207	594	75	-	-	75	22,726
	Aug-19	22,726	428	467	-	327	794	22,360
	Sep-19	22,360						22,360
	Oct-19	22,360						22,360
	Nov-19	22,360						22,360
	Dec-19	22,360						22,360
<b>Total</b>		<b>3,152</b>	<b>756</b>	<b>-</b>	<b>1,553</b>	<b>2,309</b>		



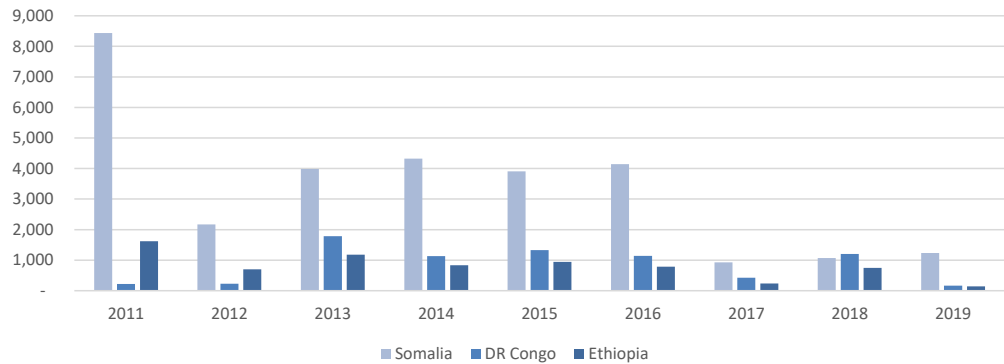
### RESETTLEMENT SUBMISSION BY COUNTRY OF ORIGIN

Country of Origin	2011	2012	2013	2014	2015	2016	2017	2018	2019	Total
Somalia	8,439	2,170	3,985	4,325	3,909	4,147	929	1,068	1,231	30,203
DR Congo	218	230	1,783	1,132	1,326	1,143	424	1,203	165	7,624
Ethiopia	1,617	700	1,181	830	941	785	237	748	143	7,182
South Sudan	-	33	214	111	420	701	143	1,229	708	3,559
Sudan	175	30	29	158	541	104	4	34	-	1,075
Uganda	13	5	24	88	108	107	47	136	163	691
Burundi	17	22	58	46	121	81	100	121	34	600
Eritrea	25	20	111	73	116	55	26	39	16	481
Rwanda	13	24	22	31	78	26	10	17	12	233
Other	1	5	5	11	26	14	20	16	9	107
<b>Total</b>	<b>10,518</b>	<b>3,239</b>	<b>7,412</b>	<b>6,805</b>	<b>7,586</b>	<b>7,163</b>	<b>1,940</b>	<b>4,611</b>	<b>2,481</b>	<b>51,755</b>

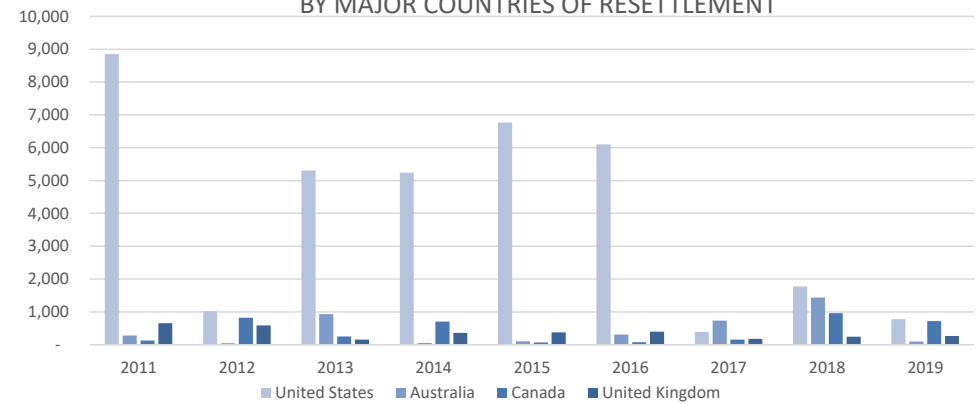
### RESETTLEMENT SUBMISSION BY COUNTRY OF RESETTLEMENT

Country of Submission	2011	2012	2013	2014	2015	2016	2017	2018	2019	Total
United States	8,849	1,019	5,304	5,239	6,764	6,105	391	1,775	780	36,226
Australia	281	50	932	53	107	310	736	1,438	102	4,009
Canada	129	821	254	705	69	75	158	963	719	3,893
United Kingdom	657	585	155	363	378	397	180	243	266	3,224
Sweden	391	402	342	397	81	262	353	120	600	2,948
Norway	72	218	218	12	11	5	6	1	-	543
Netherlands	109	114	145	16	130	-	-	-	-	514
France	-	-	29	-	-	1	88	46	5	169
Other	24	16	17	6	17	2	28	25	9	144
Denmark	6	14	16	14	29	6	-	-	-	85
<b>Total</b>	<b>10,518</b>	<b>3,239</b>	<b>7,412</b>	<b>6,805</b>	<b>7,586</b>	<b>7,163</b>	<b>1,940</b>	<b>4,611</b>	<b>2,481</b>	<b>51,755</b>

### RESETTLEMENT SUBMISSION TRENDS BY MAJOR COUNTRIES OF ORIGIN



### RESETTLEMENT SUBMISSION TRENDS BY MAJOR COUNTRIES OF RESETTLEMENT



\*Submissions to end of July '19\*



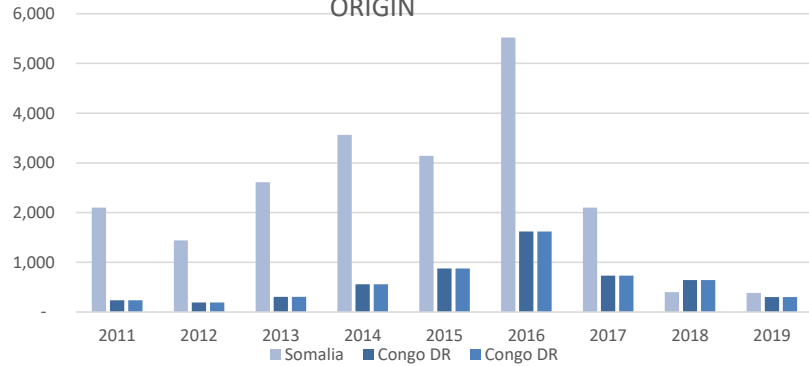
**RESETTLEMENT DEPARTURES BY COUNTRY OF ORIGIN**

Country of Origin	2011	2012	2013	2014	2015	2016	2017	2018	2019	Total
Somalia	2,102	1,442	2,612	3,562	3,142	5,521	2,102	398	386	21,267
Ethiopia	906	806	469	480	645	1,265	663	282	154	5,670
Congo DR	234	192	308	560	874	1,621	730	643	301	5,463
SSD	-	35	88	92	136	412	272	100	46	1,181
Sudan	213	102	61	82	46	123	184	9	3	823
Eritrea	48	25	25	57	28	121	62	21	6	393
Burundi	35	14	13	23	30	70	50	81	55	371
Uganda	7	14	2	36	69	70	50	73	12	333
Rwanda	35	26	26	21	28	56	24	28	4	248
Other	1	3	-	-	3	27	4	6	9	53
<b>Total</b>	<b>3,581</b>	<b>2,659</b>	<b>3,604</b>	<b>4,913</b>	<b>5,001</b>	<b>9,286</b>	<b>4,141</b>	<b>1,641</b>	<b>976</b>	<b>35,802</b>

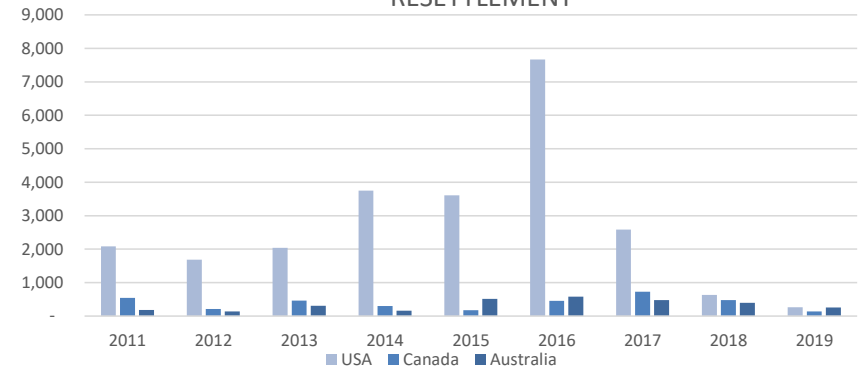
**RESETTLEMENT DEPARTURES BY COUNTRY OF RESETTLEMENT**

Country of Resettlement	2011	2012	2013	2014	2015	2016	2017	2018	2019	Total
USA	2,083	1,688	2,040	3,751	3,610	7,665	2,585	633	261	24,316
Canada	541	213	464	302	174	452	725	480	140	3,491
Australia	182	141	311	160	514	580	475	398	257	3,018
United Kingdom	208	460	260	279	308	267	248	111	61	2,202
Sweden	329	88	331	229	341	238	83	4	236	1,879
Norway	58	18	159	78	32	3	7	-	1	356
Netherlands	81	29	-	87	2	70	-	-	-	269
Other	89	12	13	20	13	2	7	15	20	191
Denmark	-	10	22	7	7	4	-	-	-	50
New Zealand	10	-	4	-	-	5	11	-	-	30
<b>Total</b>	<b>3,581</b>	<b>2,659</b>	<b>3,604</b>	<b>4,913</b>	<b>5,001</b>	<b>9,286</b>	<b>4,141</b>	<b>1,641</b>	<b>976</b>	<b>35,802</b>

RESETTLEMENT DEPARTURE TRENDS BY MAJOR COUNTRIES OF ORIGIN



RESETTLEMENT DEPARTURE TRENDS BY MAJOR COUNTRIES OF RESETTLEMENT



\*departures to end of July '19\*

**VOLUNTARY REPATRIATION FROM KENYA  
BY COUNTRY OF ORIGIN**

Country of Origin	Year											Total
	2009	2010	2011	2012	2013	2014	2015	2016	2017	2018	2019	
Sudan	665	64	28									757
Burundi	2	1		4						586	151	744
Rwanda	1	2	2	1								6
Mozambique	-	5							4			9
Somalia	-	6	69	4		485	5,616	33,783	35,403	7,559	1,726	84,651
Congo	-	3	2	7	3						4	19
Ethiopia	-	-								1,963		1,963
Uganda	-	-	4	1								5
Other	-	2	6					6		1	8	23
<b>Total</b>	<b>668</b>	<b>83</b>	<b>111</b>	<b>17</b>	<b>3</b>	<b>485</b>	<b>5,616</b>	<b>33,789</b>	<b>35,407</b>	<b>10,109</b>	<b>1,889</b>	<b>88,177</b>

