



## Cumulative data (2 April to 27 December 2020)

Confirmed cases	Recoveries	Deaths	lost to follow-up	Under investigation	Tests conducted	Contacts traced
<b>6,377</b>	<b>5,682</b>	<b>188</b>	<b>108</b>	<b>76</b>	<b>84,352</b>	<b>10,693</b>

## Week 52, 2020 (21 to 27 December 2020)

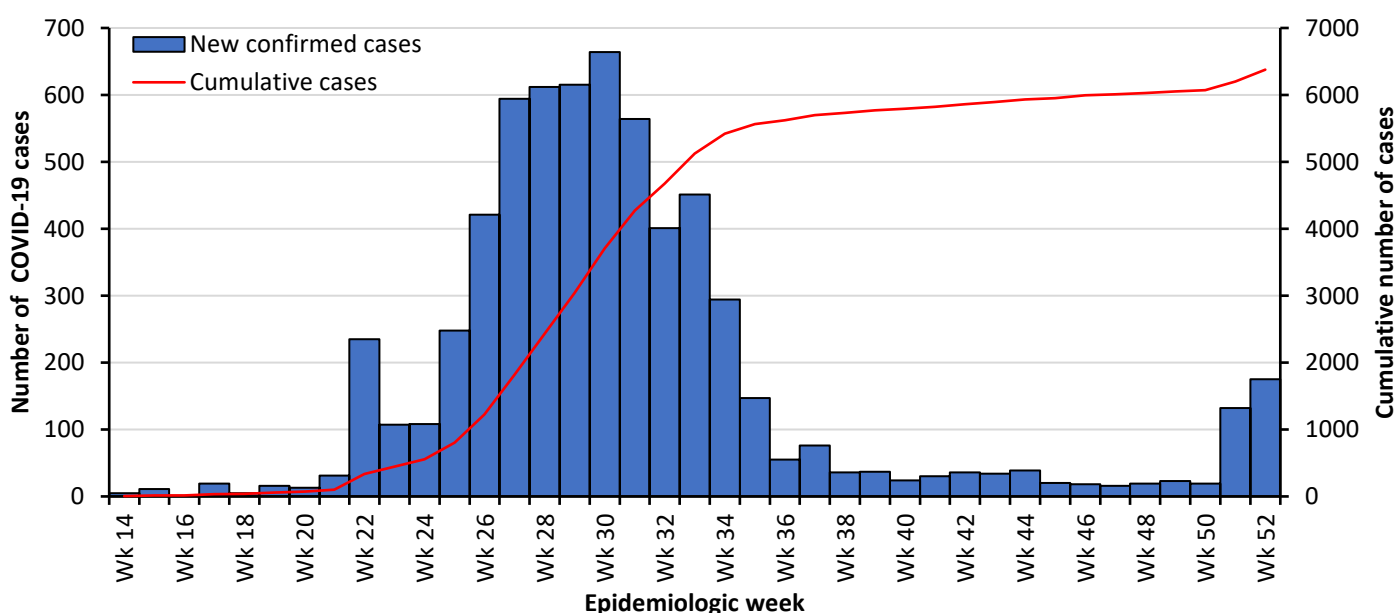
<b>175</b>	<b>18</b>	<b>1</b>	<b>1</b>	<b>0</b>	<b>1,892</b>	<b>44</b>
------------	-----------	----------	----------	----------	--------------	-----------

### Highlights

- 175 new cases were reported in week 52 (21 to 27 December 2020), this represents a 33% increase in the number of new cases compared to week 51. A cumulative total of 6,377 confirmed COVID-19 cases have been registered in Malawi
- 91 of the new cases were imported infections mostly identified among people returning from South Africa
- One new death was registered in week 55, cumulatively 188 deaths have been reported in Malawi. The overall case-fatality ratio was 2.95% (188/6,377)
- In week 52, ten active cases were admitted in various treatment units in the country, cumulatively 495 cases have been admitted.
- 1,892 COVID-19 tests have been conducted in the past week, cumulatively 84,352 tests have been conducted

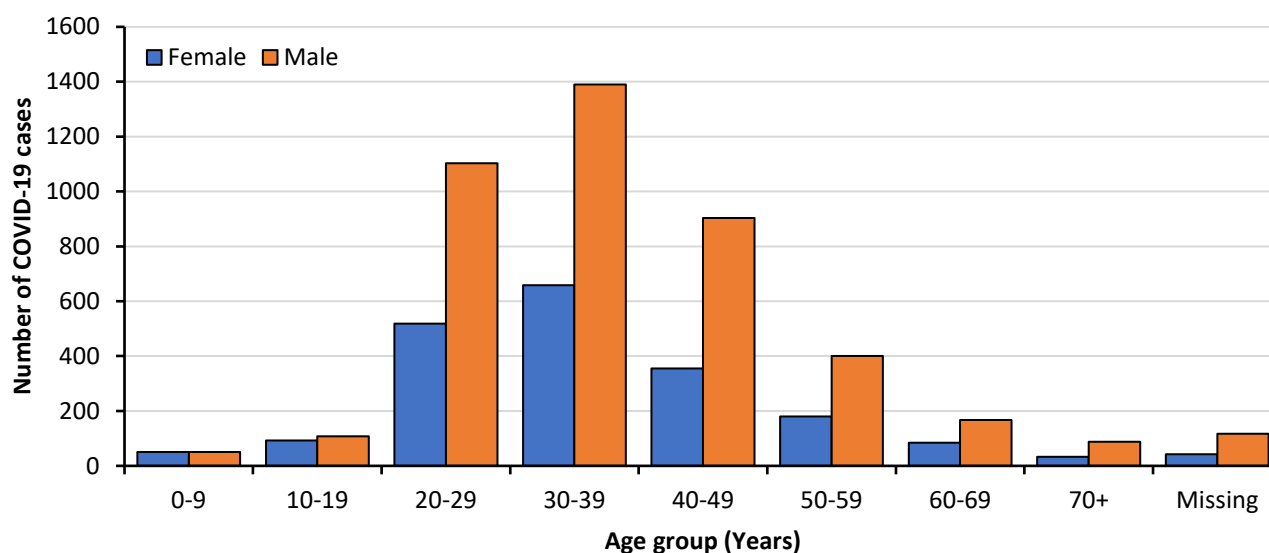
### National overview of COVID-19 cases

As of 27 December 2020, a total of 6,377 confirmed COVID-19 cases were reported in Malawi. Of these, 175 were reported in the past week. This represents a 33% increase in the number of new cases compared to cases reported in week 51. The increase in the number of new cases was largely driven by the residents returning from South Africa; in the past week, 52% of the new cases were imported. The number of new locally transmitted continues to increase compared to the past week. **Figures 1 and 2, and Table 1** below show the distribution of cases by health district, age, and sex.



**Figure 1:** Number and the cumulative number of COVID-19 confirmed cases in Malawi by week as of 27 Dec 2020

## Malawi COVID-19 weekly situation report



**Figure 2:** Age and sex distribution of COVID-19 cases in Malawi as of 27 December 2020

**Table 1:** Number of weekly and cumulative COVID-19 cases, deaths, and recoveries in Malawi (21 to 27 Dec 2020)

Reporting Health District	Confirmed Cases		Deaths		Recoveries		Lost to follow-up#		Under Investigation $\alpha$		Transmission Classification*		Weeks last reported case
	New	Total	New	Total	New	Total	New	Total	New	Total	Imported	Local	
Blantyre	64	2,160	1	81	8	1,896	0	0	0	76	217	1,943	0
Lilongwe	44	1,491	0	49	3	1,360	0	2	0	0	134	1,357	0
Mzimba North	3	600	0	13	2	546	0	35	0	0	23	577	0
Nkhata Bay	6	209	0	2	0	194	0	0	0	0	46	163	0
Mzimba South	9	180	0	3	0	144	0	10	0	0	60	120	0
Mangochi	3	168	0	2	1	155	0	0	0	0	125	43	0
Zomba	4	167	0	7	0	146	0	7	0	0	39	128	0
Dowa	1	98	0	3	0	91	0	1	0	0	55	43	1
Nkhotakota	2	95	0	2	0	84	0	0	0	0	36	59	0
Karonga	2	94	0	4	0	82	0	5	0	0	16	78	0
Thyolo	8	85	0	1	0	71	0	0	0	0	48	37	0
Machinga	5	77	0	0	0	69	0	1	0	0	68	9	0
Mchinji	2	68	0	5	0	46	0	15	0	0	8	60	0
Chitipa	2	66	0	3	0	61	0	0	0	0	6	60	0
Neno	0	60	0	0	0	58	1	1	0	0	5	55	1
Rumphi	0	58	0	3	0	53	0	0	0	0	12	46	0
Dedza	2	57	0	0	0	51	0	4	0	0	31	26	0
Ntcheu	1	54	0	1	0	48	0	4	0	0	31	23	0
Salima	2	53	0	0	4	51	0	0	0	0	26	27	0
Balaka	1	51	0	1	0	46	0	2	0	0	41	10	0
Kasungu	1	51	0	1	0	38	0	10	0	0	16	35	0
Mulanje	6	50	0	1	0	37	0	5	0	0	18	32	0
Chikwawa	3	49	0	0	0	45	0	0	0	0	29	20	0
Chiradzulu	1	40	0	1	0	35	0	1	0	0	20	20	0
Nsanje	2	40	0	1	0	31	0	4	0	0	28	12	0
Mwanza	0	28	0	1	0	26	0	0	0	0	11	17	1
Phalombe	0	11	0	1	0	8	0	1	0	0	4	7	15
Likoma	0	4	0	2	0	2	0	0	0	0	0	4	17
Ntchisi	0	4	0	0	0	3	0	0	0	0	0	4	17
Mwanza PoE	1	209	0	0	0	205	0	0	0	0	209	0	0
<b>Total</b>	<b>175</b>	<b>6,377</b>	<b>1</b>	<b>188</b>	<b>18</b>	<b>5,682</b>	<b>1</b>	<b>108</b>	<b>0</b>	<b>76</b>	<b>1,362</b>	<b>5,015</b>	

\*Imported means that infection has been acquired from outside the country; Local transmission means that the source of infection is within the country; PoE, Point of Entry; #Lost to follow-up refers to a confirmed COVID-19 case who has completed 14 days and is due for discharge but cannot be traced because is unreachable either by phone or home visit within 28 days of laboratory confirmation

## Malawi COVID-19 weekly situation report

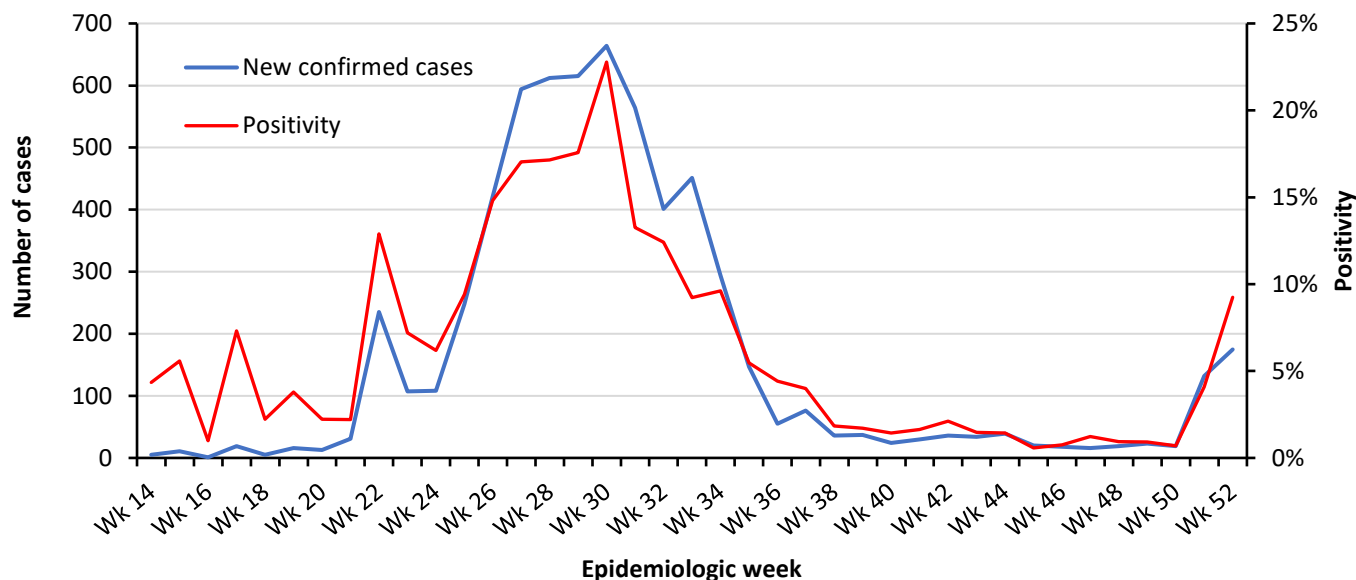
## Laboratory testing

**Table 2:** Laboratory testing for COVID-19 in Malawi as of 27 December 2020

Name of Laboratory	Cumulative samples	In the past week		Total samples		Result				
		Samples received	Samples tested	Tested	Pending	Failed	Positive		Negative	
							New	Total	New	Total
QECH	17,711	856	856	17,711	0	162	81	1,177	774	16,372
NHRL	13,929	154	154	13,929	0	0	4	522	150	13,407
Blantyre DREAM	11,276	319	322	11,275	1	2	53	905	269	10,368
KCH	10,074	472	486	10,041	33	17	29	472	457	9,552
Mzuzu	6,233	28	28	6,233	0	33	0	623	28	5,577
COM	4,129	0	0	4,129	0	43	0	464	0	3,622
PIH	3,067	0	0	3,067	0	5	0	473	0	2,589
Zomba	2,988	0	0	2,976	12	0	0	268	0	2,708
Balaka DREAM	2,716	4	4	2,714	2	4	0	151	4	2,559
Mwanza	2,572	0	0	2,572	0	0	0	167	0	2,405
Mzimba South	1,472	0	0	1,468	4	2	0	116	0	1,350
MLW	1,126	27	38	1,126	0	14	4	63	34	1,049
Bwaila	1,013	0	0	1,013	0	0	0	126	0	887
Karonga MEIRU	971	0	0	971	0	7	0	27	0	937
Karonga	477	0	0	477	0	0	0	73	0	404
Nkhata Bay	466	1	1	466	0	0	1	111	0	355
Mchinji	407	0	0	407	0	0	0	58	0	349
Salima	365	0	0	365	0	0	0	32	0	333
Mangochi	331	0	0	331	0	0	0	26	0	305
Nsanje	228	0	0	228	0	0	0	31	0	197
Dowa	221	0	0	221	0	0	0	53	0	168
Chitipa	213	2	2	213	0	0	2	55	0	158
Thyolo	213	0	0	213	0	9	0	23	0	181
Kamuzu Barracks	190	0	0	190	0	0	0	54	0	136
Kasungu	190	0	0	190	0	0	0	32	0	158
Ntcheu	180	0	0	180	0	0	0	13	0	167
Neno	178	0	0	178	0	0	0	35	0	143
Nkhotakota	175	0	0	175	0	0	0	19	0	156
Balaka	166	0	0	166	0	3	0	19	0	144
Rumphi	147	0	0	147	0	0	0	28	0	119
Dedza	136	0	0	136	0	0	0	18	0	118
Mulanje	134	1	1	134	0	0	1	30	0	104
Phalombe	117	0	0	117	0	0	0	8	0	109
Chiradzulu	99	0	0	99	0	0	0	21	0	78
Likoma	96	0	0	96	0	0	0	4	0	92
Chikwawa	87	0	0	87	0	0	0	9	0	78
Lilongwe Lighthouse	68	0	0	68	0	0	0	10	0	58
Ntchisi	43	0	0	43	0	0	0	7	0	36
Wezi Medical Center	42	0	0	42	0	0	0	18	0	24
Nkhoma Mission	37	0	0	37	0	0	0	6	0	31
Malamulo Adventist	32	0	0	32	0	0	0	8	0	24
Blantyre Lighthouse	31	0	0	31	0	0	0	4	0	27
UNC Project Lilongwe	30	0	0	30	0	0	0	12	0	18
Machinga	28	0	0	28	0	0	0	6	0	22
<b>Total</b>	<b>84,404</b>	<b>1,864</b>	<b>1,892</b>	<b>84,352</b>	<b>52</b>	<b>301</b>	<b>175</b>	<b>6,377</b>	<b>1,716</b>	<b>77,674</b>

NHRL; National Health Reference laboratory; COM; College of Medicine; MLW; Malawi Liverpool Wellcome Trust; QECH; Queen Elizabeth Central Hospital; KCH; Kamuzu Central Hospital; PIH; Partners in Hope;

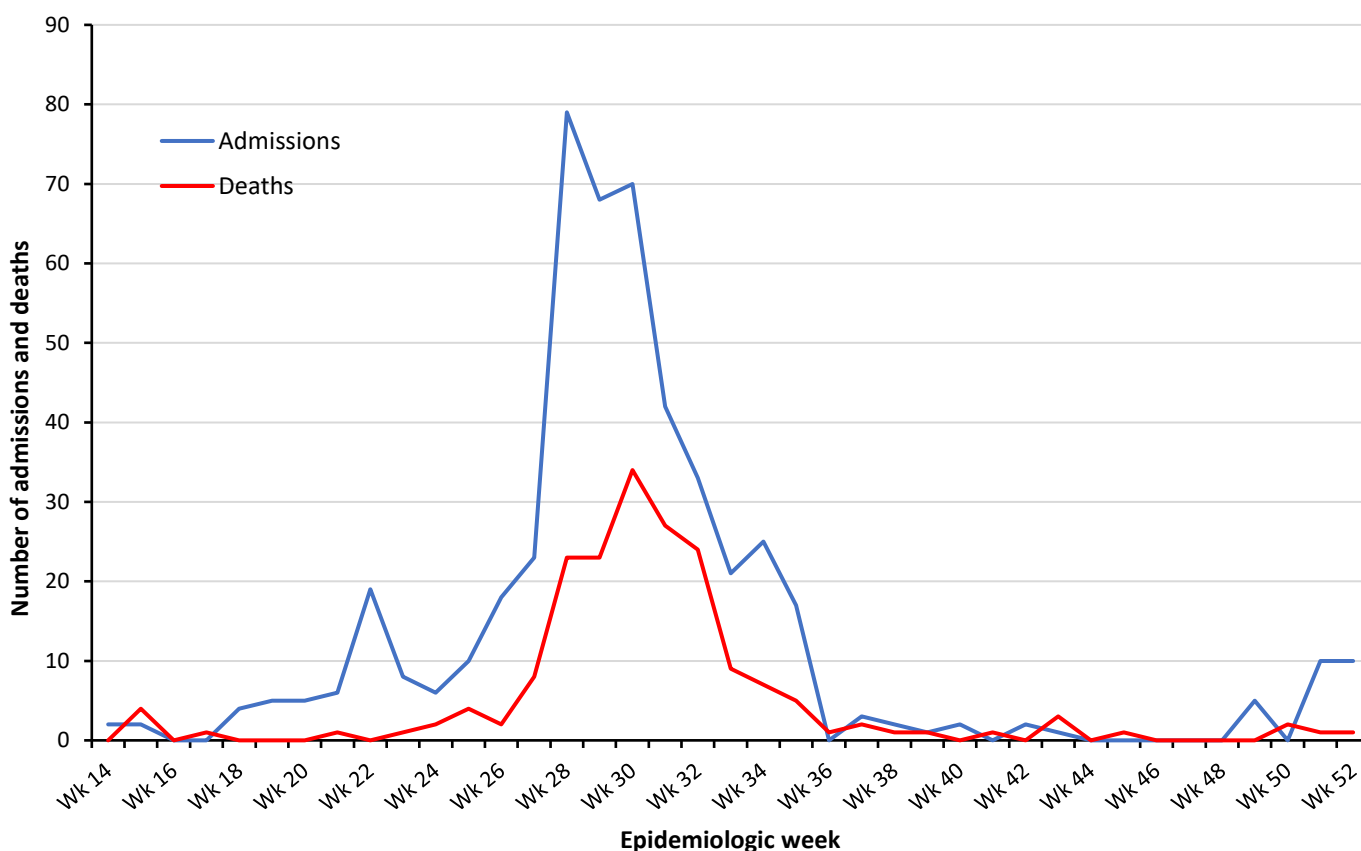
## Malawi COVID-19 weekly situation report



**Figure 3:** Confirmed cases and positivity rates by week as of 27 December 2020

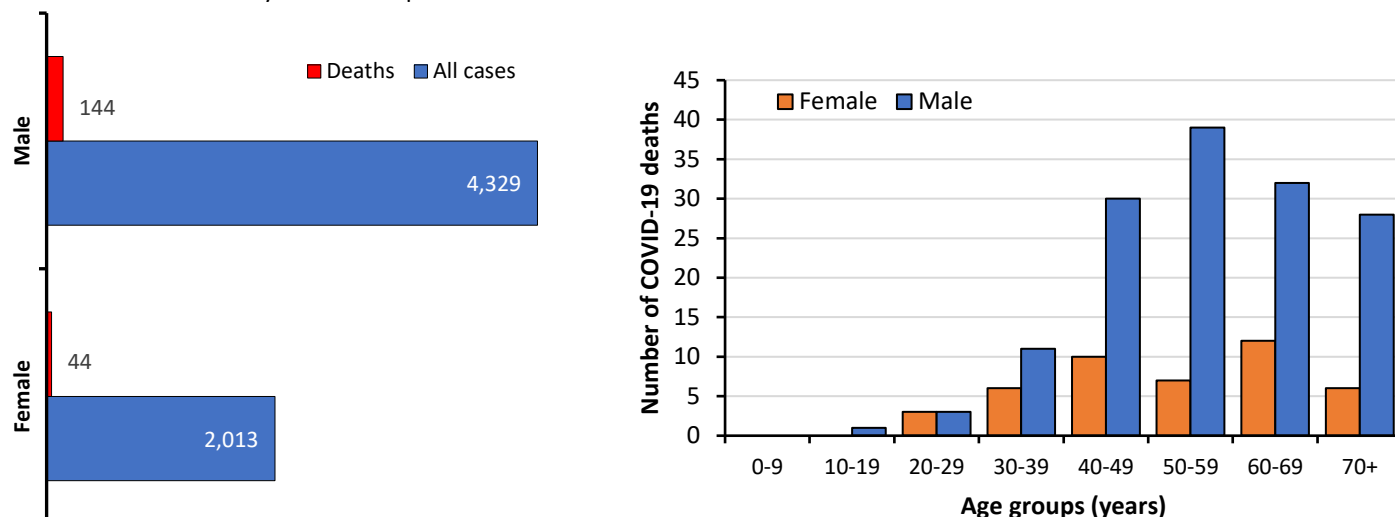
## Case management

In the past week, ten cases were admitted in various treatment centers, this is an increase compared to six admissions in week 51. There was one new death reported in week 52, cumulatively 188 deaths have been reported in Malawi. The overall case-fatality ratio was 2.95% (188/6,377). **Figure 4** below shows the trend of admissions and deaths by epidemiologic week in Malawi.



**Figure 4:** Number of admissions and deaths by epidemiologic week in Malawi as of 27 December 2020

## Malawi COVID-19 weekly situation report



**Figure 5:** Age and sex distribution of COVID-19 cases and deaths in Malawi as of 27 December 2020

## Conclusion

In the past week, Malawi has recorded 175 new cases bringing the total to 6,377 cases. Despite that the majority (52%) of the new cases are imported infections, the number of new locally transmitted infections has doubled compared to week 51. A higher percentage of the new cases are being reported from high burden health districts of Blantyre and Lilongwe. Nationally, the weekly number of cases continues to increase compared to the preceding week.