

Syria

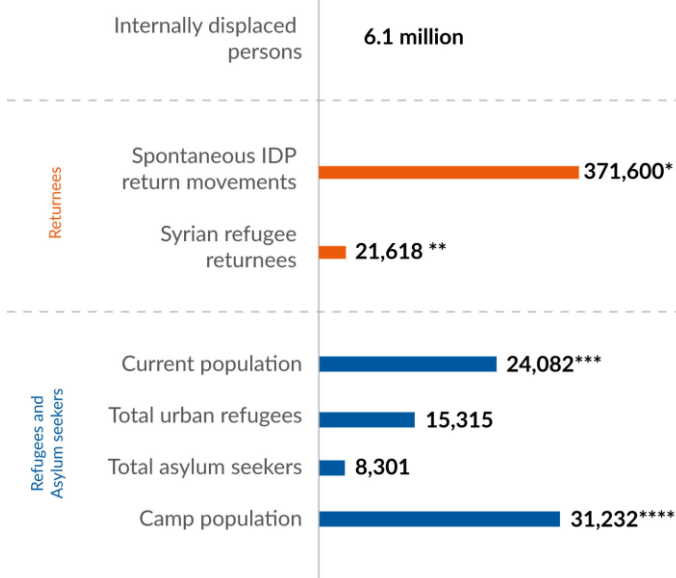
September 2020

With the Syria crisis in its ninth year, humanitarian needs remain staggering in terms of scale, severity and complexity, with significant protection risks continuing in several areas across the country.

According to the 2020 Syria Humanitarian Needs Overview (HNO), some **11.06** million people are still in need of humanitarian assistance, of whom **4.7** million people are in acute need.

Rapid, safe and unhindered humanitarian access remains challenging. The UN continues to advocate for sustained access for humanitarian actors to provide assistance and protection to all people in need across affected communities.

POPULATION OF CONCERN



*OCHA, April 2020

** Operational Portal, 31 May 2020

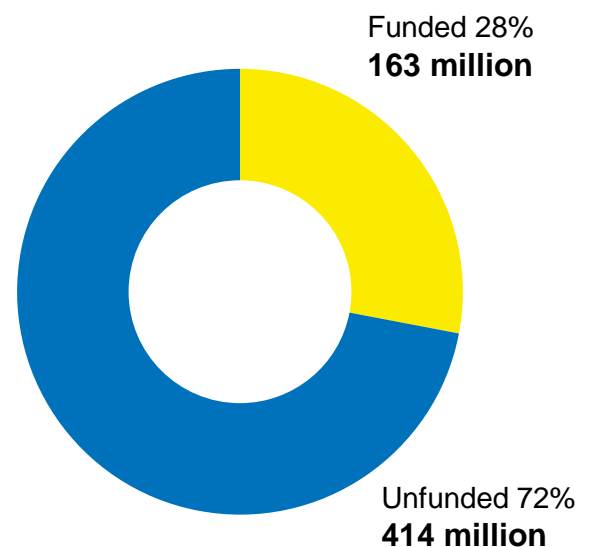
***This figure excludes the camp population

****Only 6,800 individuals that arrived to Al-Hol before the influx are persons of concern of UNHCR.

FUNDING (AS OF 29 SEPTEMBER 2020)

USD 577.0 million

requested for the Syria Operation



UNHCR PRESENCE

Staff: 495

437 National Staff (88%)

58 International Staff (12%)

182 Female (37%)

313 Male (63%)

Offices: 7

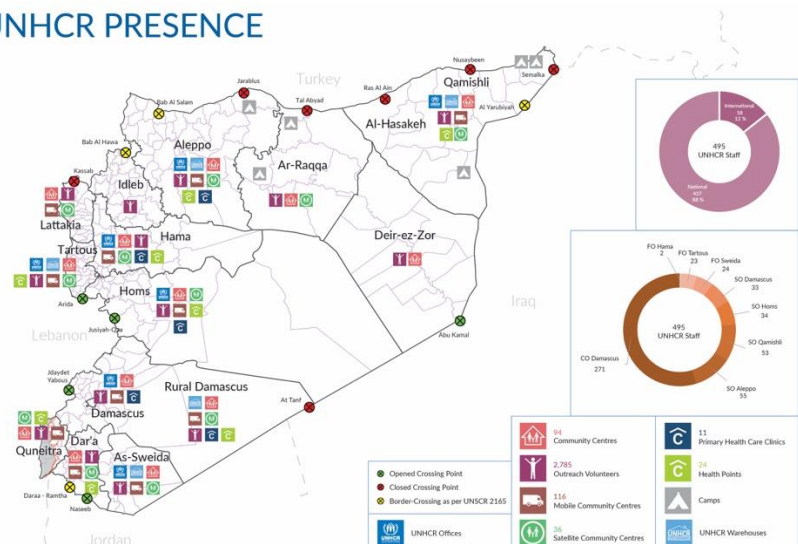
1 Country Office in Damascus

3 Sub Offices in Aleppo, Homs and Qamishli

2 Field Offices in Tartous and As-Sweida

1 Field Unit in Damascus

UNHCR PRESENCE



Working with Partners and Public Institutions

By the end of September, UNHCR had **28** agencies including **six** international non-governmental organizations (INGOs), **20** national NGOs and **two** government ministries; the Ministry of Local Administration and Environment and Ministry of Higher Education. The Syrian Arab Red Crescent (SARC) is one of the key humanitarian agencies in Syria that is engaged in various aspects of humanitarian response on behalf of UNHCR.

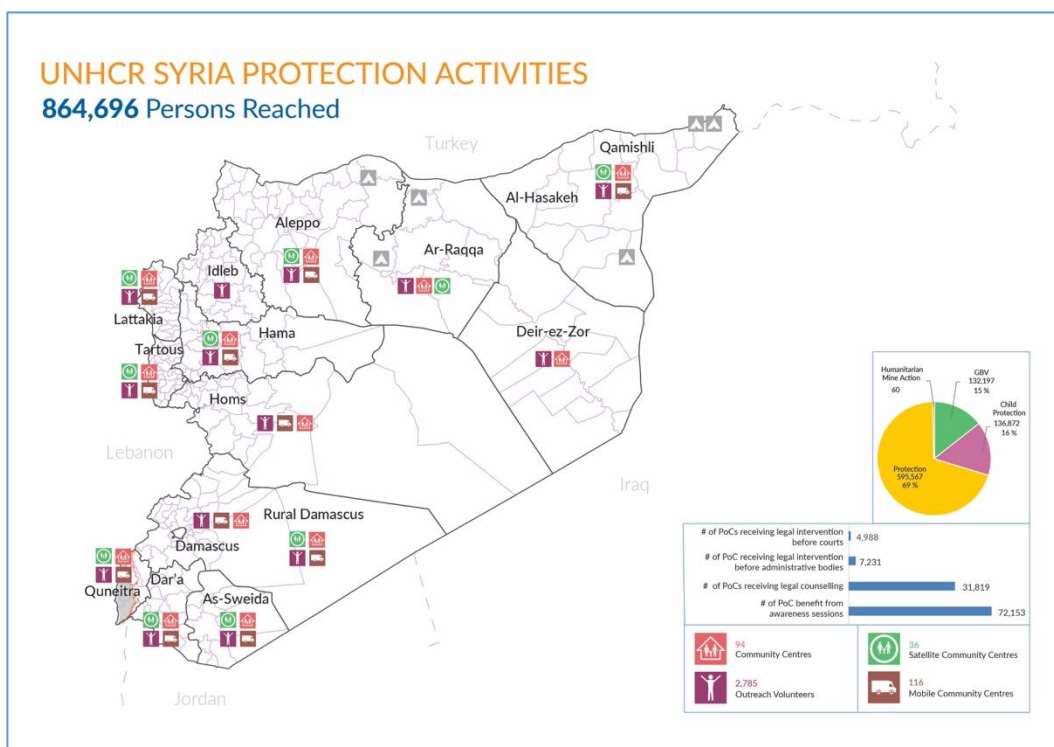
Under the overall leadership of the UN Office for the Coordination of Humanitarian Affairs (OCHA), UNHCR is the lead agency for the Protection, Shelter and Non-Food Item (NFI) sectors within the framework of the interagency approach which makes it a key player in the coordination structures and response. The Shelter Sector is co-led by UNHCR and the Ministry of Local Administration and Environment, while the NFI Sector is led by UNHCR in close coordination with SARC. UNHCR also maintains strategic partnerships with all the UN agencies providing humanitarian response in Syria.

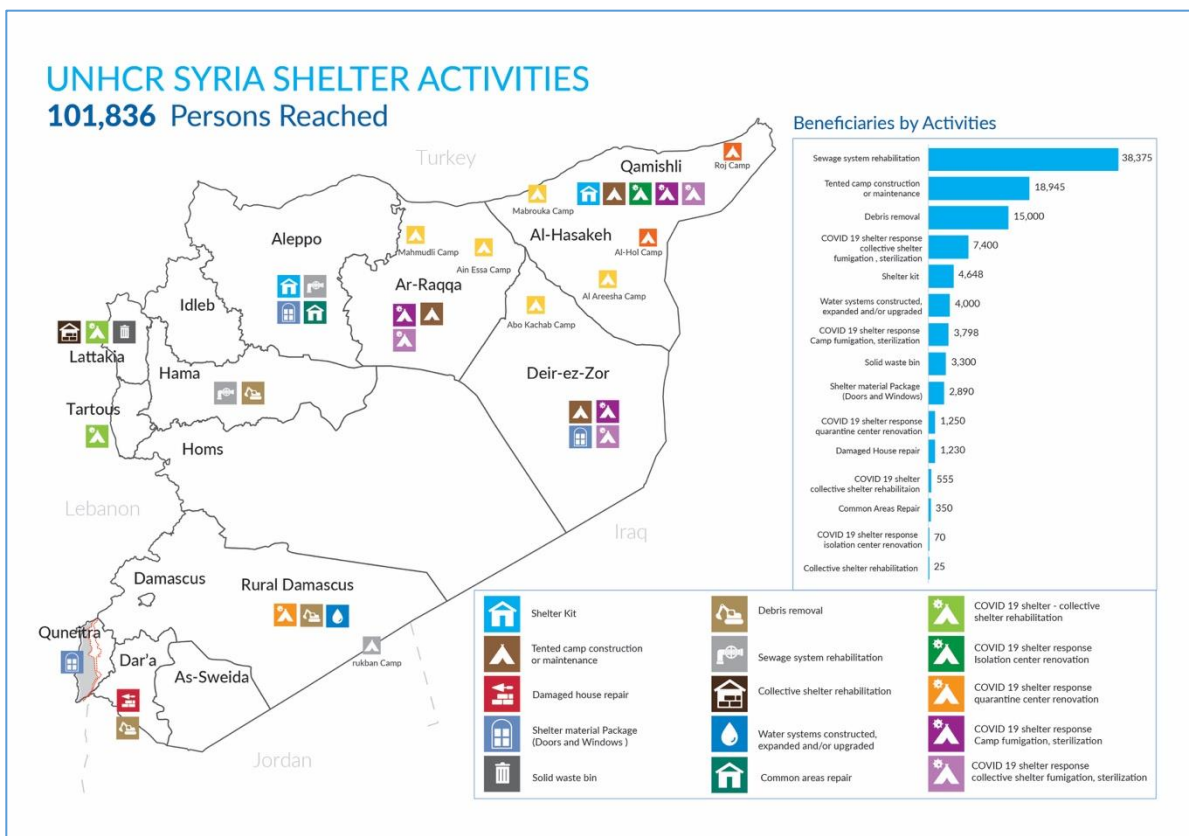
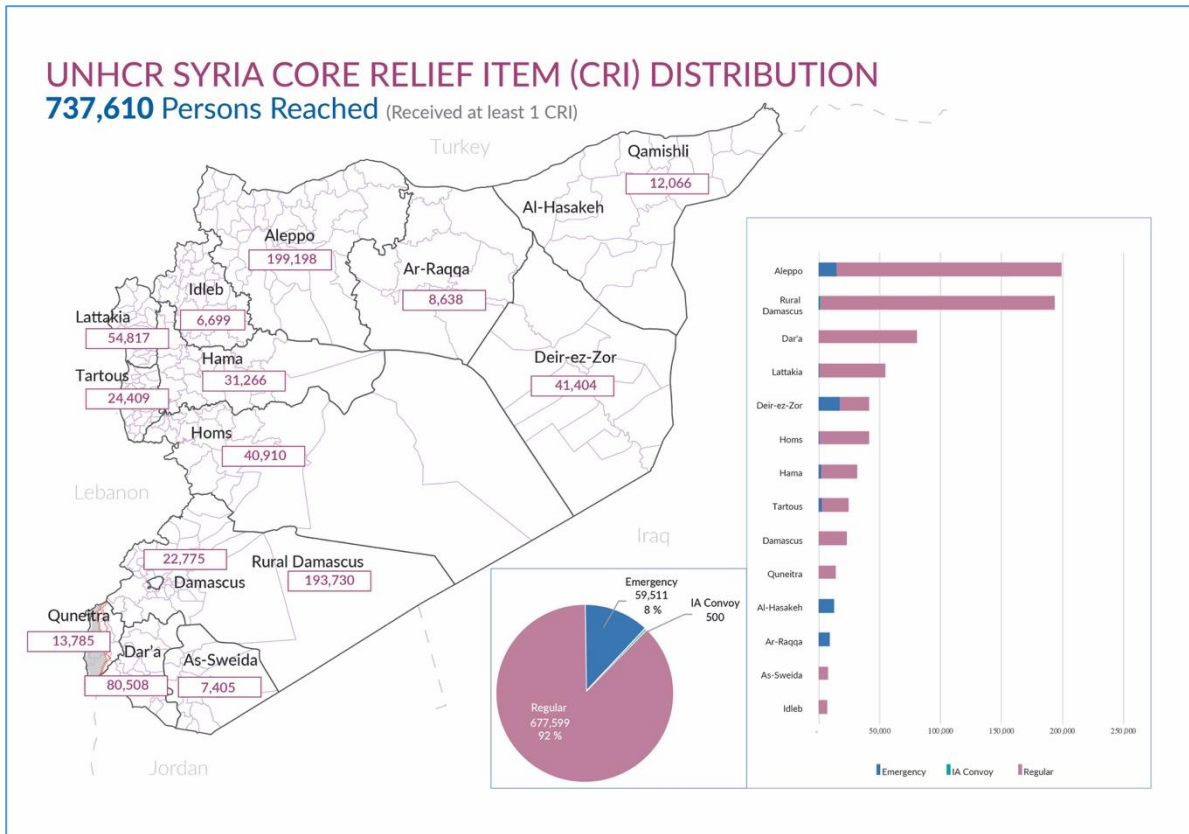
Strategic Directions

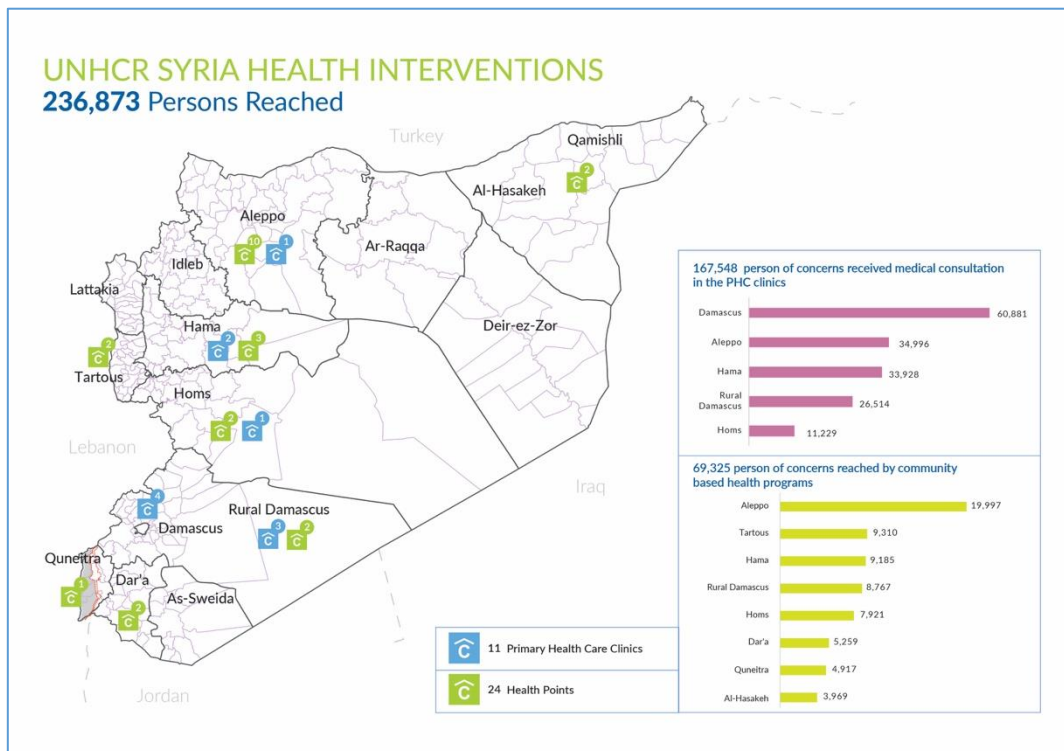
Within the context of the Syria Humanitarian Response Plan (HRP), UNHCR's strategic directions and operational priorities are:

- Prepare for and respond to potential influx of Internally Displaced Persons (IDPs) and refugees, as well as returns of IDPs and refugees.
- Contribute to fostering an environment for voluntary, dignified, safe and sustainable return of refugees and IDPs with focus on support for those who have returned spontaneously and their communities.
- Enhance protective environment for refugees and promote innovative solutions shifting from individualized approaches to more community-based interventions.
- Strengthen delivery-focused partnerships to enable UNHCR achieve its interventions through inter-agency and sector coordination mechanisms. This includes the Special Situations Group, UN Country Team, Humanitarian Country Team, Return and Reintegration Working Group and Area Humanitarian Country Team.

Main Activities from Jan-Sep 2020







Assistance and support to refugees and asylum seekers

In September, **2,452** refugees from **762** refugee families benefited from the multi-purpose cash grants (MPCGs) bringing the total number of those assisted since January this year to **13,643** individuals/**4,773** families.

Due to COVID-19 related restrictions no interviews were undertaken in September for both Refugee Status Determination (RSD) and resettlement.

However, the overall Refugee Status Determination (RSD) interviews by UNHCR until the end of September were **14** individuals from **6** families and the total number of RSD submissions from January till end of September were **27** individuals from **17** families. Since the beginning of the year, **17** individuals from **10** families were recognized as refugees. Moreover, UNHCR through its Middle East and North Africa (MENA) Regional Bureau referred **9** families comprising **28** individuals to the United Kingdom for resettlement consideration.

Two UNHCR-supported community centres in Al-Hasakeh Governorate continued to provide a wide range of protection services to refugees. By 30 September, the number of refugee outreach volunteers supporting communities in Damascus, Rural Damascus, Aleppo and Al-Hasakeh reached **126**.

From January to September, **65** Gender-Based Violence (GBV) survivors were identified and supported with needed services. Additionally, **74** awareness sessions were organized on gender-based violence including in camps in North East Syria benefiting **1,365** individuals since the beginning of the year.

Furthermore, **14,784** refugees and asylum seekers received free-of-charge comprehensive primary health care services through **10** UNHCR-supported primary health care clinics as of end of September. Secondary and tertiary health care was also provided to **2,040** of the beneficiary population through designated public, charitable and private contracted hospitals in Syria.

Assistance and support to spontaneous returnees

UNHCR and partners continued their support to increase the quarantine capacity of Al Dweir, Rural Damascus from **1,800** to **2,450** individuals.

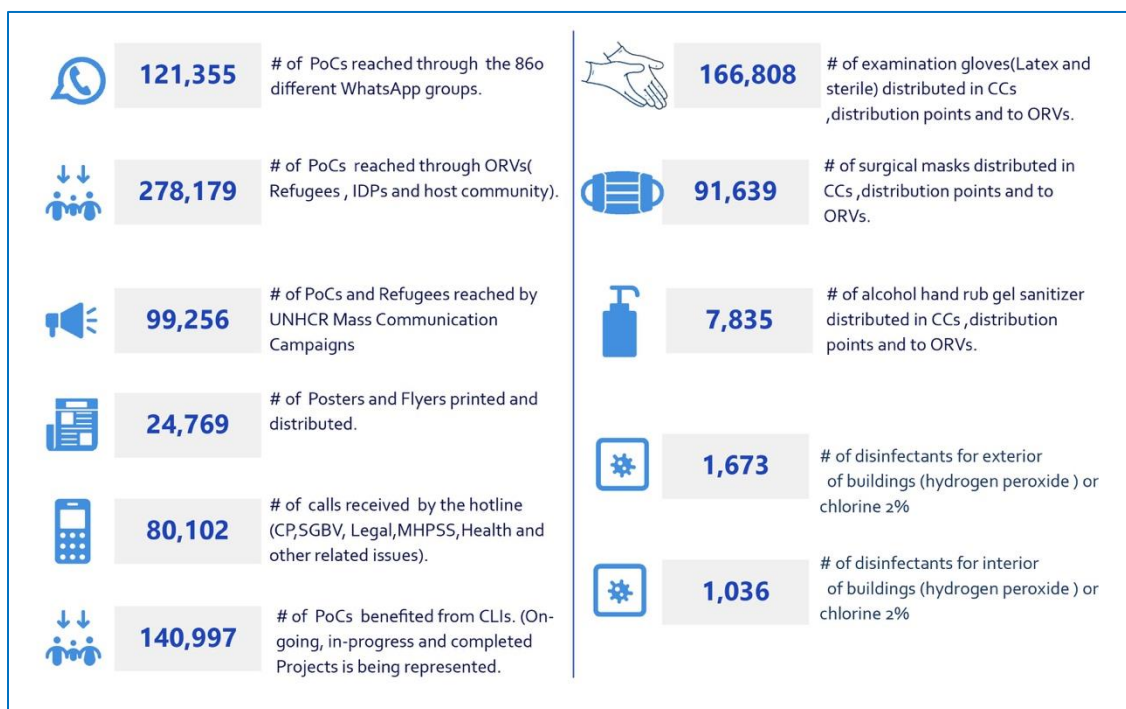
By the end of September, the number of remedial classes and catch-up activities provided by UNHCR reached **8,325** returnee students at the primary and secondary levels totaling **11,625** since January this year. Since the beginning of the year, **4,537** students were also given the opportunity to do their homework in a student-friendly environment through the Homework Café at the community centres.

The number of GBV survivors identified and referred for specialized services by UNHCR and partners reached **1,920** by the end of September. Since January, **49,760** women participated in **2,488** awareness sessions to enhance their role in the decision-making process and in designing activities to address their needs.

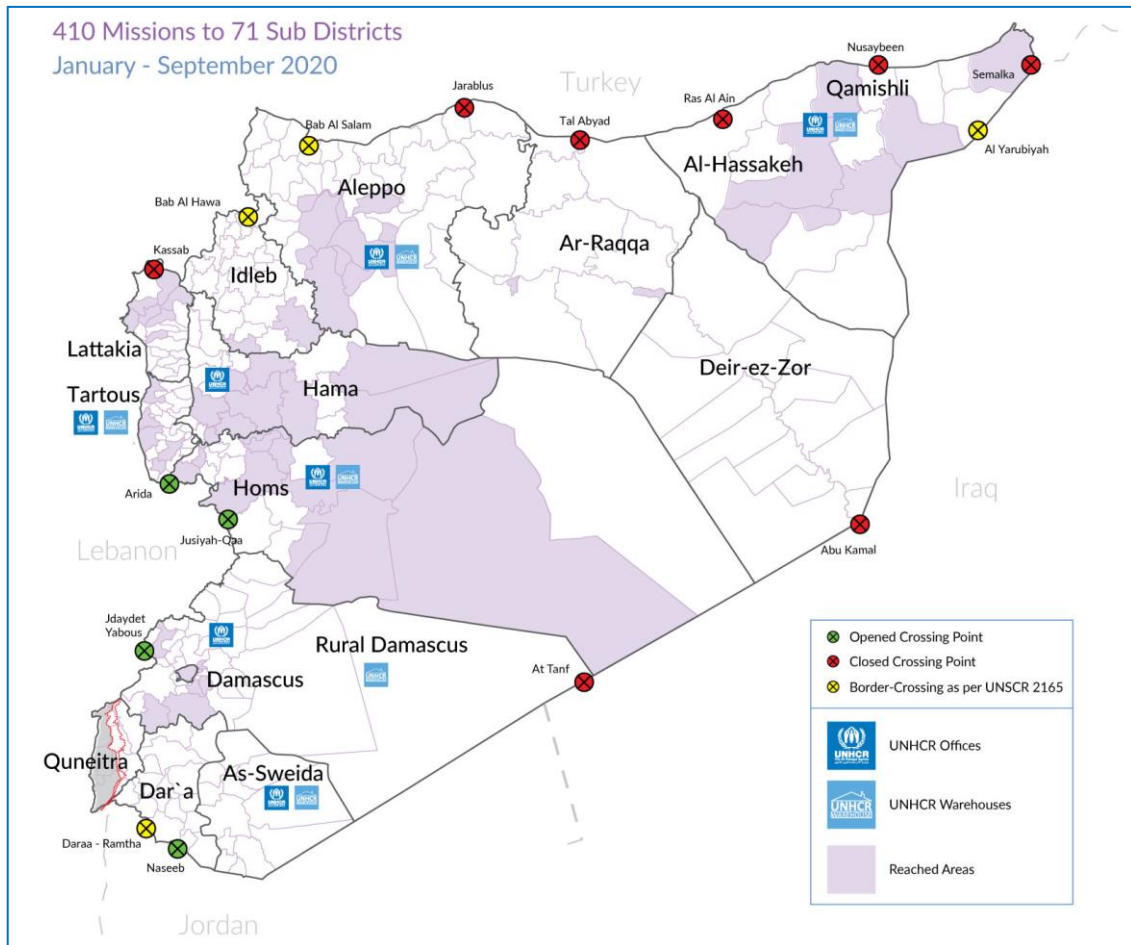
Additionally, UNHCR supported **488,038** returnees/ **97,608** families by 30 September with core relief items and seasonal items including rechargeable fans, extra blankets and plastic sheets, sleeping bags, winter jackets and winter clothing.

Response to COVID-19

from Mar-Sep 2020



UNHCR Syria missions



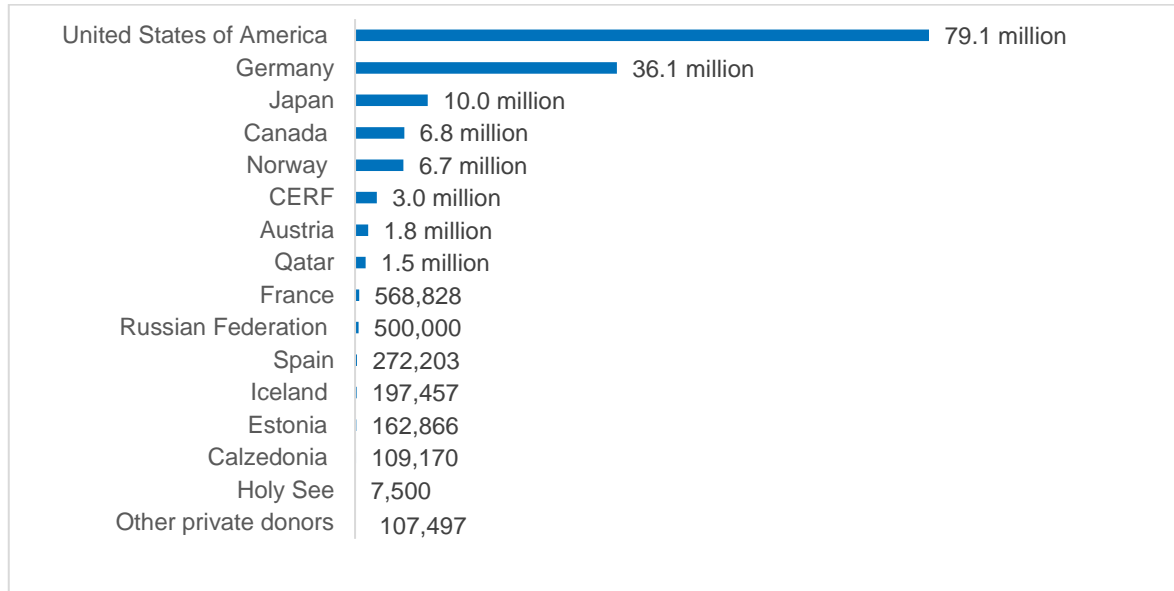
Financial Information

As of 29 September 2020

We are grateful to all donors for the critical support provided to the UNHCR Syria Operation with earmarked and unearmarked funding.

EARMARKED CONTRIBUTIONS | USD

Earmarked contributions for the operation amount to some **US\$ 163,015,912**



OTHER SOFTLY EARMARKED CONTRIBUTIONS | USD¹

Germany 62.7 million | United States of America 26.4 million | United Kingdom 24.8 million | Denmark 14.6 million | Private donors Australia 9 million | Canada 8.7 million | Private donors USA 8.6 million | Private donors Germany 6.3 million | Sweden 6.1 million | Finland 5.5 million | Private donors Japan 4.5 million | Private donors Republic of Korea 3.5 million | Spain 3.4 million | Ireland 3.3 million | Private donors United Kingdom 3 million | Private donors Lebanon 2.1 million

UNEARMARKED CONTRIBUTIONS | USD²

Sweden 76.4 million | Private donors Spain 52.9 million | Norway 41.4 million | Netherlands 36.1 million | Denmark 34.6 million | United Kingdom 31.7 million | Private donors Republic of Korea 27.2 million | Germany 25.9 million | Private donors Japan 21 million | Switzerland 16.4 million | France 14 million | Private donors Italy 12.4 million | Italy 10.6 million | Private donors Sweden 10.5 million

CONTACTS

Tom Winston Monboe
 Reporting Officer
 UNHCR Syria
 Email: monboe@unhcr.org

LINKS

www.unhcr.org/sy
<https://twitter.com/UNHCRinSYRIA/status/1118150319341436928>

¹ Due to their earmarking at the region or sub-region, or to a related situation or theme, the other softly earmarked contributions listed are those which can potentially be used for Syrian Arab Republic. Where a donor has contributed \$2 million or more, the total amount of the contributions is shown.

² Contributed without restrictions on its use, unearmarked funding allows UNHCR critical flexibility in how best to reach refugees and other populations of concern who are in the greatest need and at the greatest risk. Where a donor has contribution \$10 million or more, the total amount of the contribution is shown.