



ALEPPO: : NFI Sector Partner SO distributed 5000 baby kits (towels, woolen blankets, pajamas, woolen shirts, and trousers), together with blankets and winterization kits for IDPs from Eastern Aleppo, in Al Forqan distribution center. Here a mother and her baby girl receiving a kit, helping them for the upcoming winter.

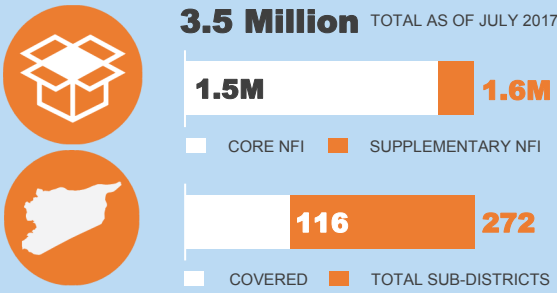
© SOS Syria / R. Abdullah

KEY POINTS

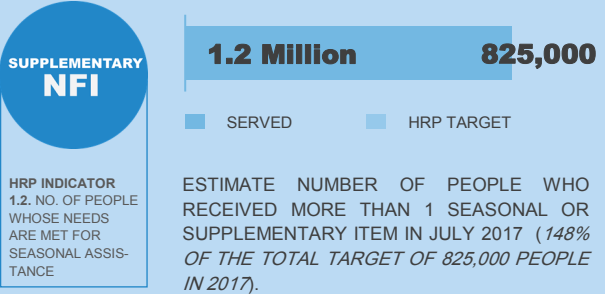
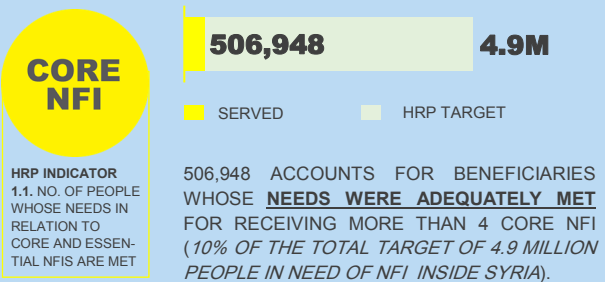
- Sector partners continue to provide assistance to IDPs affected by the Ar-Raqqa situation. In July, most of the partners have distributed NFI kits along with hygiene and jerry cans in Ein Issa, and Karama camps. Partner's registration of IDPs for NFI distribution in villages in the northern part of Ar Raqqa is ongoing. The influx to Areesha is continuing where this week the population reached nearly 4,700 individuals.
- Overall in July sector partners have assisted 0.5M individuals with NFI (In-kind and CASH assistance). Among the assisted half millions of individuals, more than 50% of beneficiary needs are fully met, while remaining received supplementary NFIs. The 500,000 people assisted in July bring the total of assisted people in 2017 to 4,455,496.
- To enable NFI sector members to effectively prioritize the humanitarian assistance at the household levels, NFI Sector has planned a Household level needs assessment exercise in consultation with Ministry of Local Administration & Environment (MoLA&E) and Central Bureau of Statistic (CBS) across Syria in all Government control areas. In the first phase, NFI sector and CBS have agreed upon the sample size and methodology of the assessment.
- In order to strengthen the information management capacity of NFI sector members, NFI Sector arranged a two-day capacity building training on 22-23 July. The main objective of the training was to strengthen sector partner's capacity on the whole spectrum of information management ranging from data collection to information dissemination. Overall 19 staff members from 12 different sector members participated in the training.

NUMBERS IN BRIEF

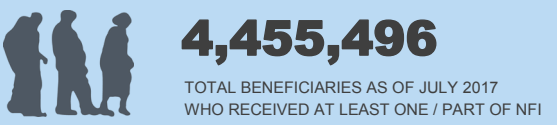
TOTAL NFI DISTRIBUTED



BENEFICIARIES ADEQUATELY SERVED



OVERALL REACHED BENEFICIARIES



GAPS AND CHALLENGES

- Widespread insecurity, challenging physical access and rigorous bureaucratic procedures and approval limit provision of adequate and regular humanitarian assistance especially to those who live in besieged and hard-to-reach areas;
- Absence of age and gender disaggregated information of population in need unable the sector to accommodate and target specific needs;
- Logistical constraints especially during inter-agency convoy such as road blockage, presence of checkpoints, presence of threats, and proximity to active front lines (i.e. Ar Raqqa) continue to hamper rapid distribution,;
- Lack of actual data on distribution recipients prevent the sector to better measure the actual reached and served beneficiaries;
- Limited and irregular monitoring of distribution due to insecurity and sensitivities compromise the ability of the sector to assess the impact of its assistance and better inform future planning;
- Absence of clear and effective feedback mechanism from population in need due to information gathering sensitivities unable the sector to better determine the efficacy of its effort;
- Lack of income-generating activities to provide the necessary financial means continues to hamper access to basic household items among the most vulnerable population in need;
- Diminishing active participation among sector members affects coordination and the overall sectorial reach;
- Inexact coordination structure impacts the level of efficiency in coordinating sectorial response for interagency convoys.
- Lack of reliable consolidated information for interagency convoy reach affects the sector's ability to determine the extent and impact of its convoy contribution;
- Insufficient number of detailed and comprehensive assessment makes it difficult for the sector to shift its response priorities from distribution of basic essential NFI items to provision of supplementary items.
- Decreasing number of local NGOs authorized to partner with UN agencies particularly in severely affected areas limit the extent of humanitarian response (i.e. Ar Raqqa).
- Lack of adherence to agreed distribution standards (i.e. UN-HCR solar lamps) affects the quality of NFI response (i.e. Latakia and Mashta'a Al-Helou).

CRISIS BACKGROUND: *The crisis in the Syrian Arab Republic that started in March 2011 has transformed into a complex emergency that led to 6.3 million IDPs and 4.8 million Syrian refugees. The 2017 Humanitarian Needs Overview reported that around 13.5 million people are in need of humanitarian assistance of which around 5.8 million people need to receive essential household items and other multi-sectorial assistance as they continue to live in an unsafe and uncertain environment. The degree of resilience and positive coping mechanism of the affected population have gradually reduced due to the protracted nature of the hostilities. Purchasing power and the ability to provide for their basic household needs have decreased due to economic recession that left many people unemployed and the prospect of accessing essential household items has also declined due to closure of essential service providers.*



PARTNER IN FOCUS

SOS Children's Villages in Syria is a non-profit non-governmental associate, working on Child rights as per the mandate of UNCRC and providing emergency relief by helping orphans and others who lack family care, bereft of their homes, families, and, safety for different circumstances.

SOS Children's Villages in Syria was founded in 1975 and was registered in the Ministry of Social Affairs. The first SOS village in Syria was opened in 1981 and continues to provide safe homes for children in need, under the principle of long term child care.

In 2013, SOS Children's Villages Syria started its Emergency Response Program (ERP) which aims to help severely-crisis-harmed Syrians.

SOS Children's Villages head office is in Damascus city, and it operates in Damascus, Rural Damascus Aleppo, and Tartous governorates. To date the organization has 250 staff members providing services to those in needs.

As part of NFI sector, SOS Children's Villages are involved in NFI distribution in Aleppo and Tartous Governorates. Today SOS Children's villages have assisted more than 12,500 families with NFI distribution in Aleppo and 423 families in Tartous governorate. Apart from Basic NFIs SOS children's villages assisted more than 2500 families with winter clothing and other NFIs mainly in eastern part of Aleppo (Hanano, Alshaar, Kallase, Bostan Al-Aser, and Tishreen) to protect them from harsh winter.

SOS Children's Villages have signed MOUs with Ministry of Education, Ministry of Foreign Affairs and Ministry of Social Affairs, and have an official collaborations agreement with Syrian Arab Red Crescent.

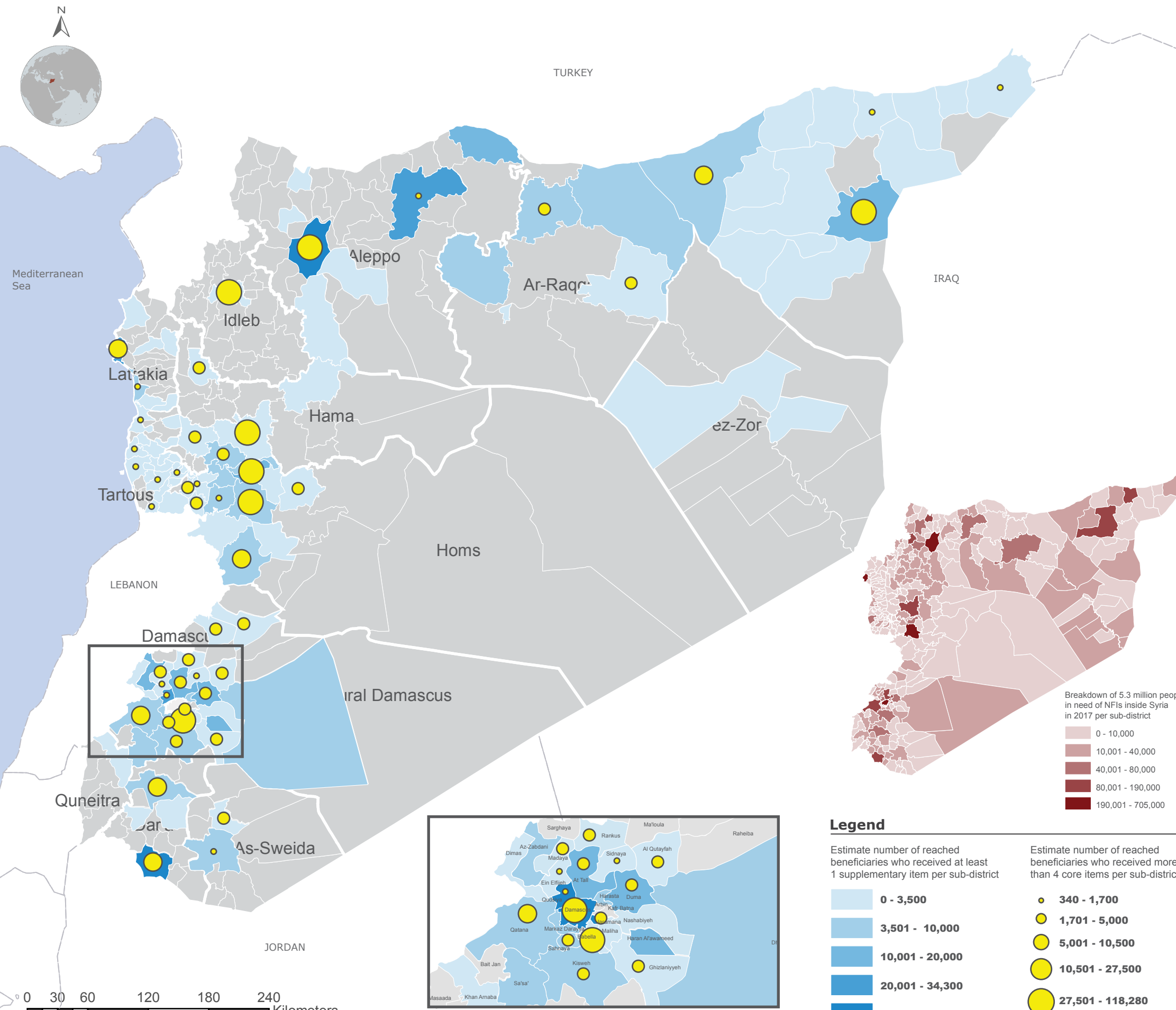
NFI Sector Coordination Team

Joel Andersson, Senior NFI Sector Coordinator (anderssj@unhcr.org)
 Zina Alkhiami, NFI Sector Field Associate (alkhiami@unhcr.org)
 Muhammad Shahzad, IM Officer (shahzadm@unhcr.org)
 Corazon C. Lagamayo, IM Officer (lagamayo@unhcr.org)
 Maha Shaban, IM Associate (shabanm@unhcr.org)
 Ashraf Zedane, IM Associate - Aleppo (zedane@unhcr.org)



SYRIA: NFI RESPONSE

Reporting Period: July 2017



BENEFICIARIES ASSISTED

CORE ITEMS

506,948

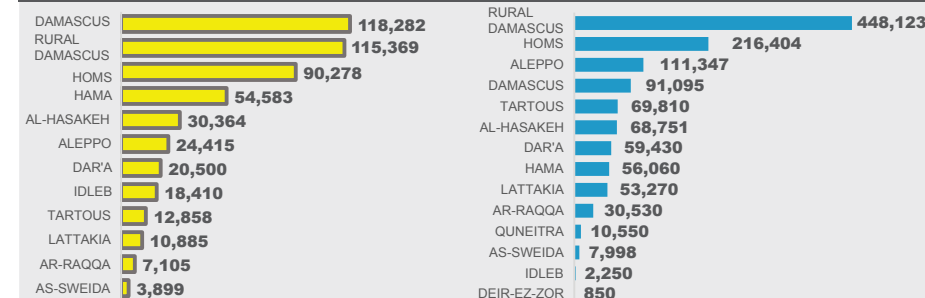
PEOPLE WHOSE NEEDS WERE ADEQUATELY MET FOR RECEIVING MORE THAN 4 CORE NFI (10% OF THE 4.9M TOTAL TARGET PEOPLE IN NEED OF NFI IN SYRIA)

SUPPLEMENTARY ITEMS

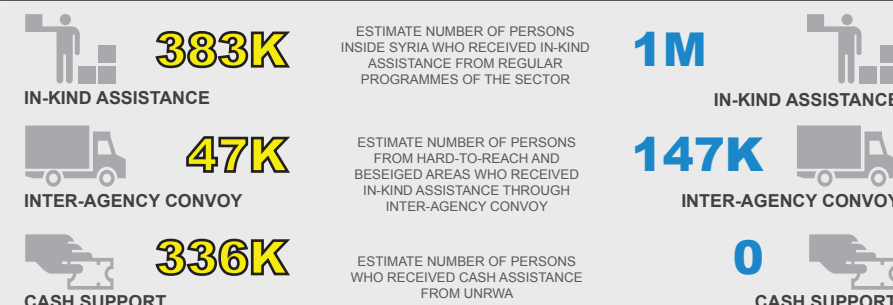
1,226,469

PEOPLE WHO RECEIVED AT LEAST 1 SUPPLEMENTARY ITEM (148% OF THE 825,000 TOTAL TARGET PEOPLE IN NEED OF SUPPLEMENTARY NFI IN SYRIA)

BENEFICIARIES ASSISTED PER GOVERNORATE



BENEFICIARIES ASSISTED BY TYPE OF SUPPORT



NOTE: Breakdown of beneficiaries per type of support does not necessarily sum up to the reported number of beneficiaries as some communities may have received more than one type of assistance.

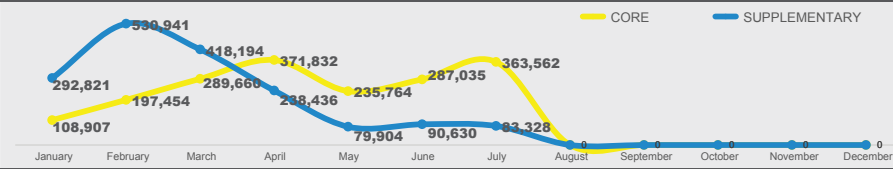
TOTAL NFI DISTRIBUTED PER GOVERNORATE



TOTAL NFI DISTRIBUTED PER TYPE



TOTAL NFI DISTRIBUTION PER MONTH



TOTAL BENEFICIARIES REACHED

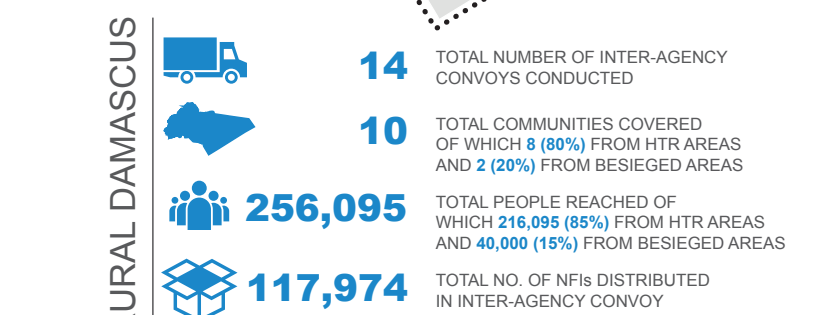
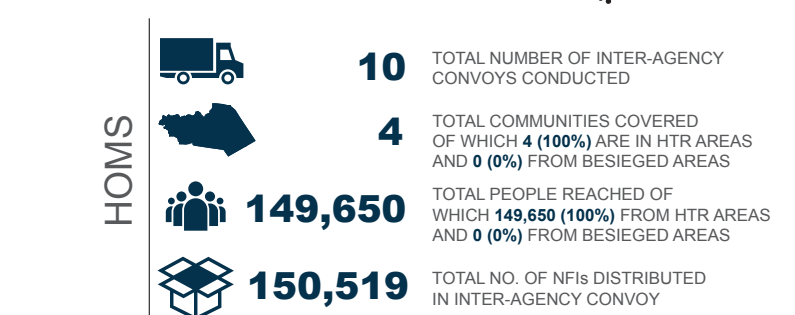
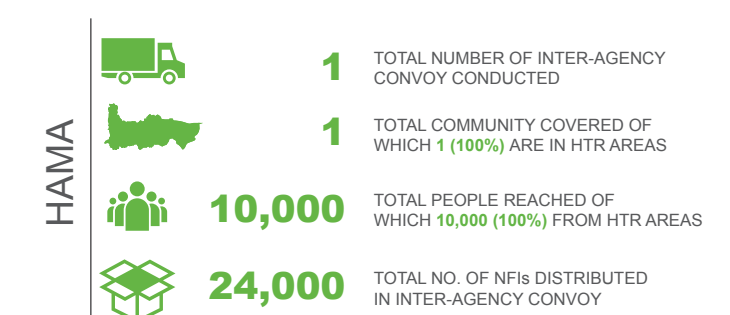
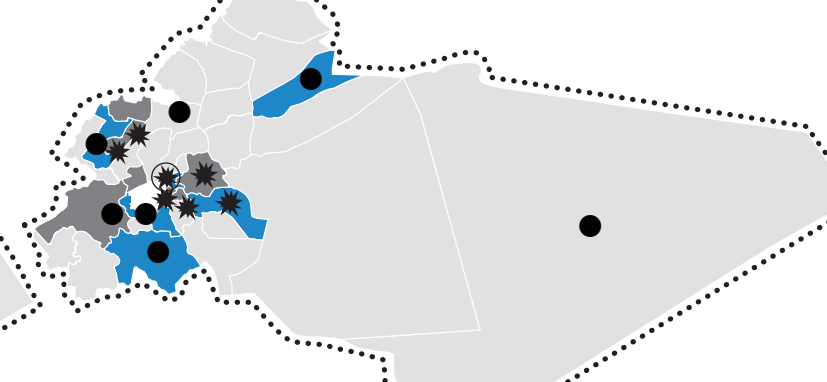
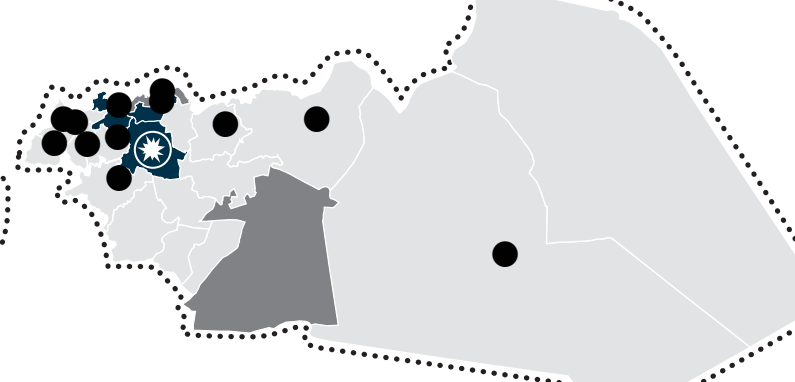
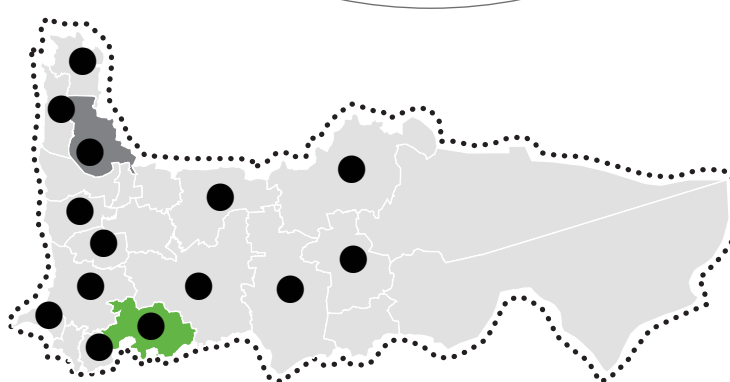
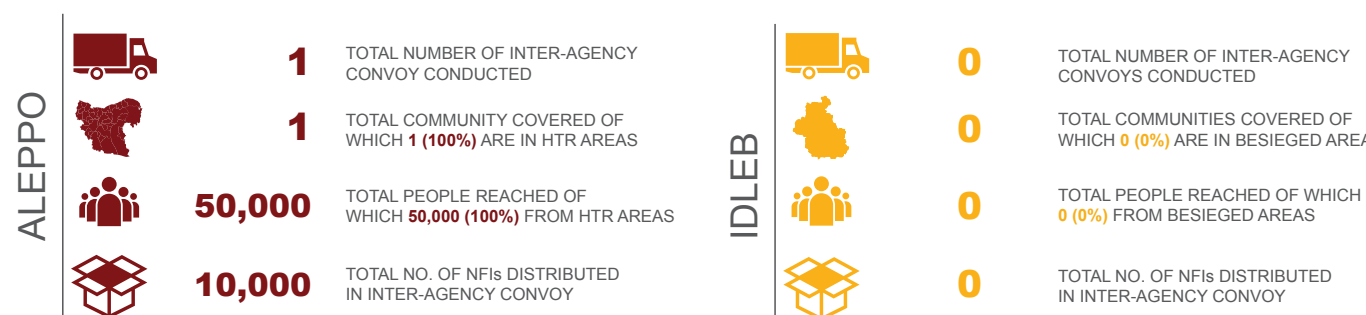
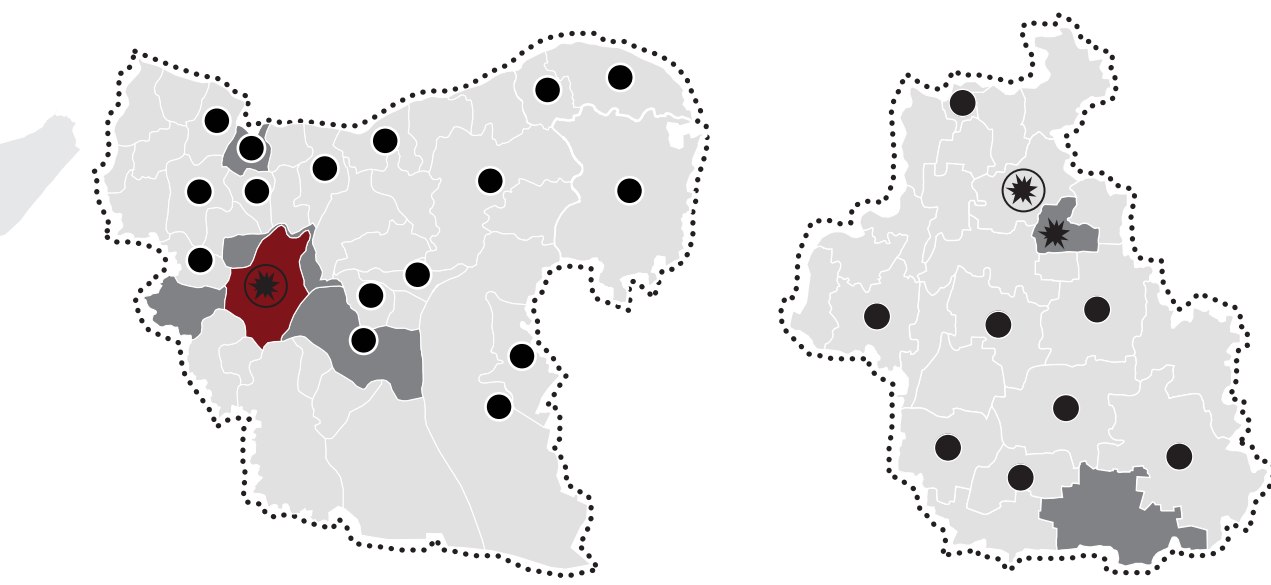
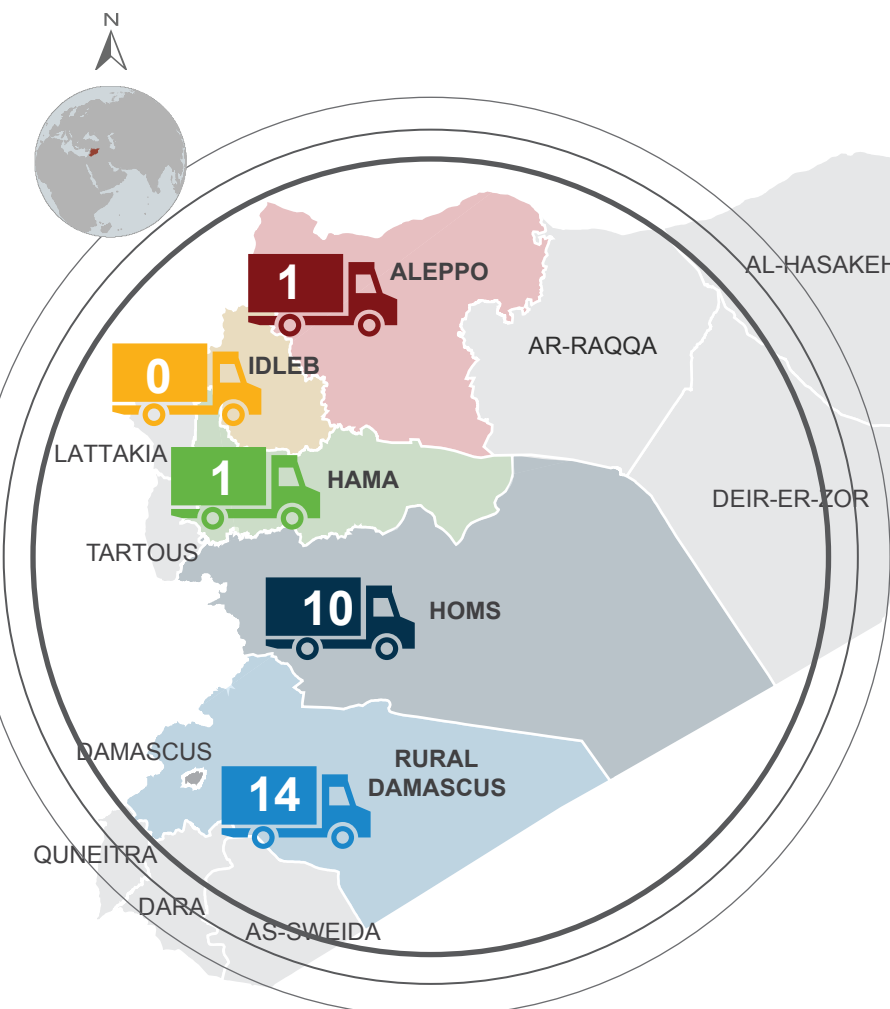
4,455,496

TOTAL NUMBER OF PEOPLE WHO RECEIVED AT LEAST ONE / PART OF NON-FOOD ITEM AS OF JULY 2017

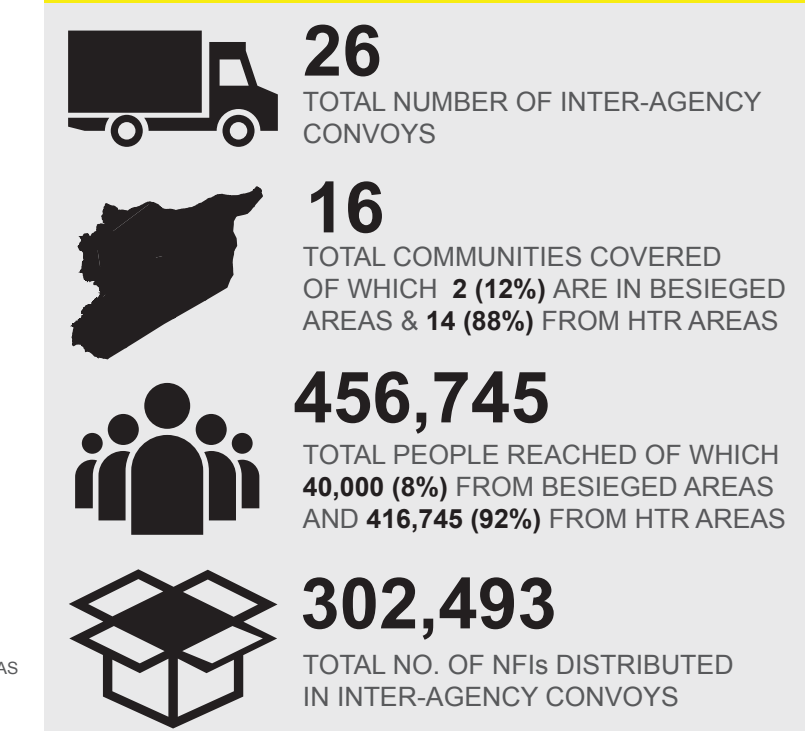


SYRIA: INTER-AGENCY CONVOY

Reporting Period: July 2017



SUMMARY



NAME OF BESIEGED AND HTR COMMUNITIES COVERED BY INTER-AGENCY CONVOY (2016-2017)

GOVERNORATE	HARD-TO-REACH COMMUNITIES	BESIEGED COMMUNITIES
ALEPPO	● AFRIN ● ALEPPO CITY ● HAJEB ● NABUL ● TALL REFAAT	
IDLEB		* FOAH
HAMA	● HARBANIFSE	
HOMS	● AR-RASTAN ● DAR KABIRA ● HOMS CITY ● KAFR LAHA ● TALBISEH ● TALDU ● TIR MAALAH	
RURAL DAMASCUS	● BABELLA ● BLUDAN ● JIRUD ● MADAMIYET ELSHAM ● QUDSIYA ● RAWDA BATRONEH ● SARGHAYA ● SUQ WADI BARD ● YALDA ● ZAKYEH	* ARBIN * AZ-ZABADANI * BEIT SAWA * DARRAYA * DUMA * EIN TERMA * HAMMURA * HARASTA * HEZZEH * JISREIN * KAFR BATNA * KHAN ELSHIH * MADAYA * NASHABIYEH * SAGBA

LEGEND

- No. of inter-agency convoys (IACs)
- No. of beneficiaries (persons) reached by IACs
- Sub-districts with besieged communities
- Sub-districts with (HTR) hard-to-reach communities
- Sub-districts with besieged and HTR communities
- No. of distributed non-food items
- Areas covered by convoy in 2016

FOOTNOTE/S:

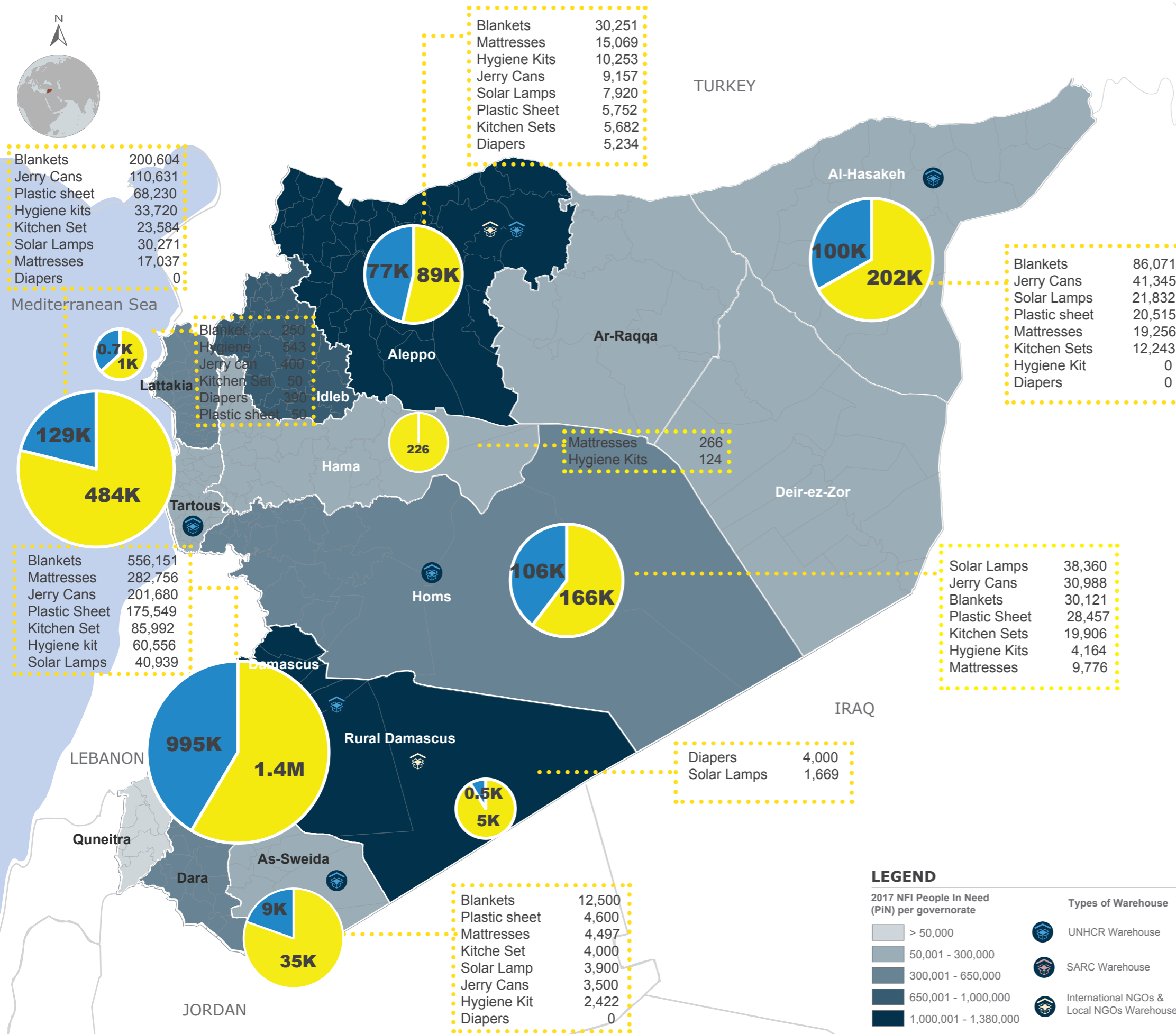
A. The information presented here only shows DRC, IOM, UNHCR and UNICEF convoys.

B. One convoy is counted as one completed trip.



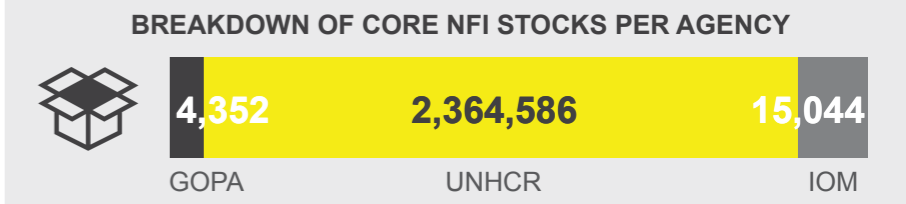
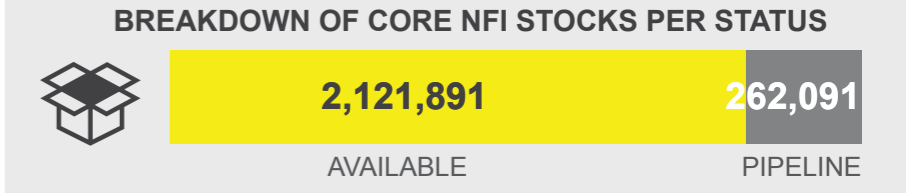
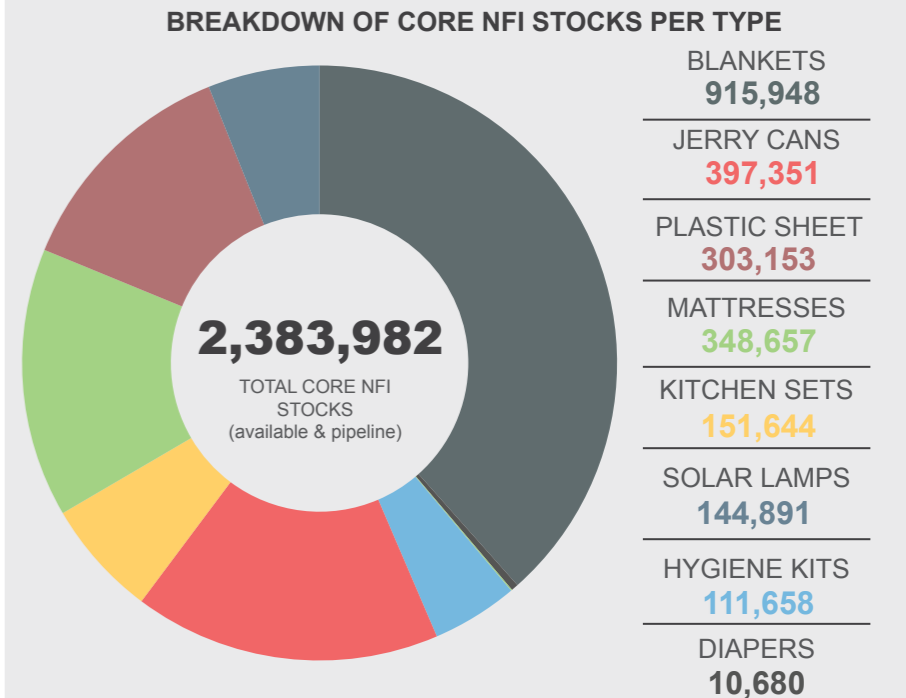
SYRIA: NFI STOCKPILE

Reporting Period: August 2017



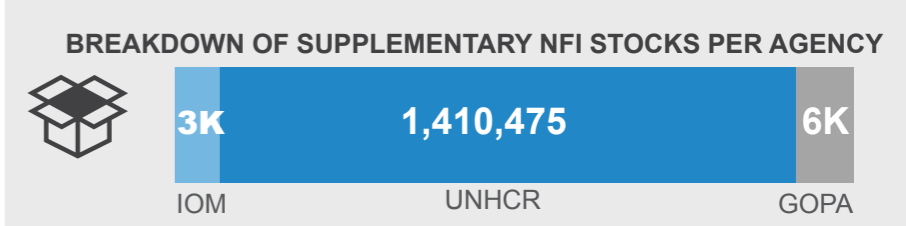
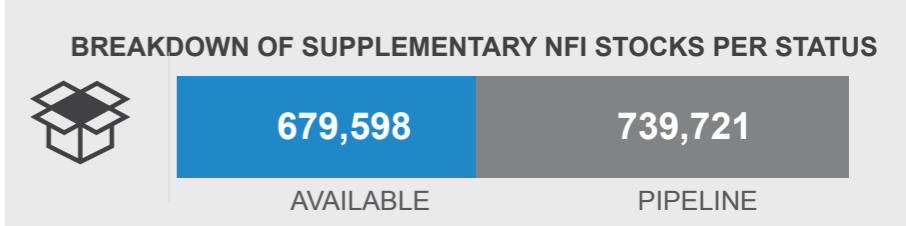
3,803,301 TOTAL CORE AND SUPPLEMENTARY NFI STOCKS AS OF AUGUST 2017

CORE NON-FOOD ITEMS



SUPPLEMENTARY NON-FOOD ITEMS

1,419,319 TOTAL SUPPLEMENTARY NFI (available and pipeline)



LEGEND

2017 NFI People In Need (PiN) per governorate

- < 50,000
- 50,001 - 300,000
- 300,001 - 650,000
- 650,001 - 1,000,000
- 1,000,001 - 1,380,000

Types of Warehouse

- UNHCR Warehouse
- SARC Warehouse
- International NGOs & Local NGOs Warehouse