

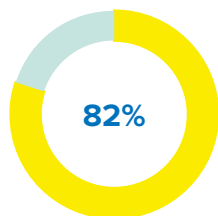
# Step 1

## PREVENTION

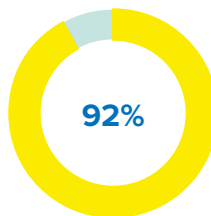
Community Engagement & Awareness-Raising

Our team works around the clock to capacitate and empower refugees in order to prevent infection and transmission within their families and the community.

### Refugees Awareness



Know preventative measures to protect against COVID-19



Would call the Ministry of Public Health or approach a PHC if a family member had symptoms

### Communicating with Communities

100% of refugees known to UNHCR were reached through all social media platforms with information on:

- COVID-19 symptoms and transmission
- Hygiene awareness and prevention methods
- Diagnostic and treatment procedures
- Government instructions on movements and curfew
- Self-isolation procedures



**198,222** calls related to COVID-19 assistance responded to by the Call Center - The joint UNHCR/WFP call center since mid-April 2020.

### Awareness Sessions, Hygiene Kits Distributions and Community Engagement

Humanitarian agencies conducted hygiene promotion and awareness sessions as well as hygiene kits distribution in informal tented settlements, and other similar sites reaching **380,683** individuals living in such overcrowded conditions. Dividing work, UNICEF focused on tented settlements and UNHCR on collective shelters.



of the population living in informal settlements reached



**380,683** persons



**480+** refugees with medical background doing community health surveillance



**32** training sessions for health and non-health workers



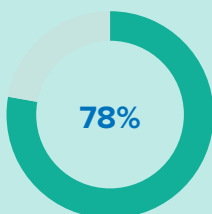
**76,137** families



**650** UNHCR staff and frontline workers trained



**6,529** refugees trained and mobilized



of the refugee population, living in private accommodation targeted



**7,537** informal tented settlements



**927** collective shelters






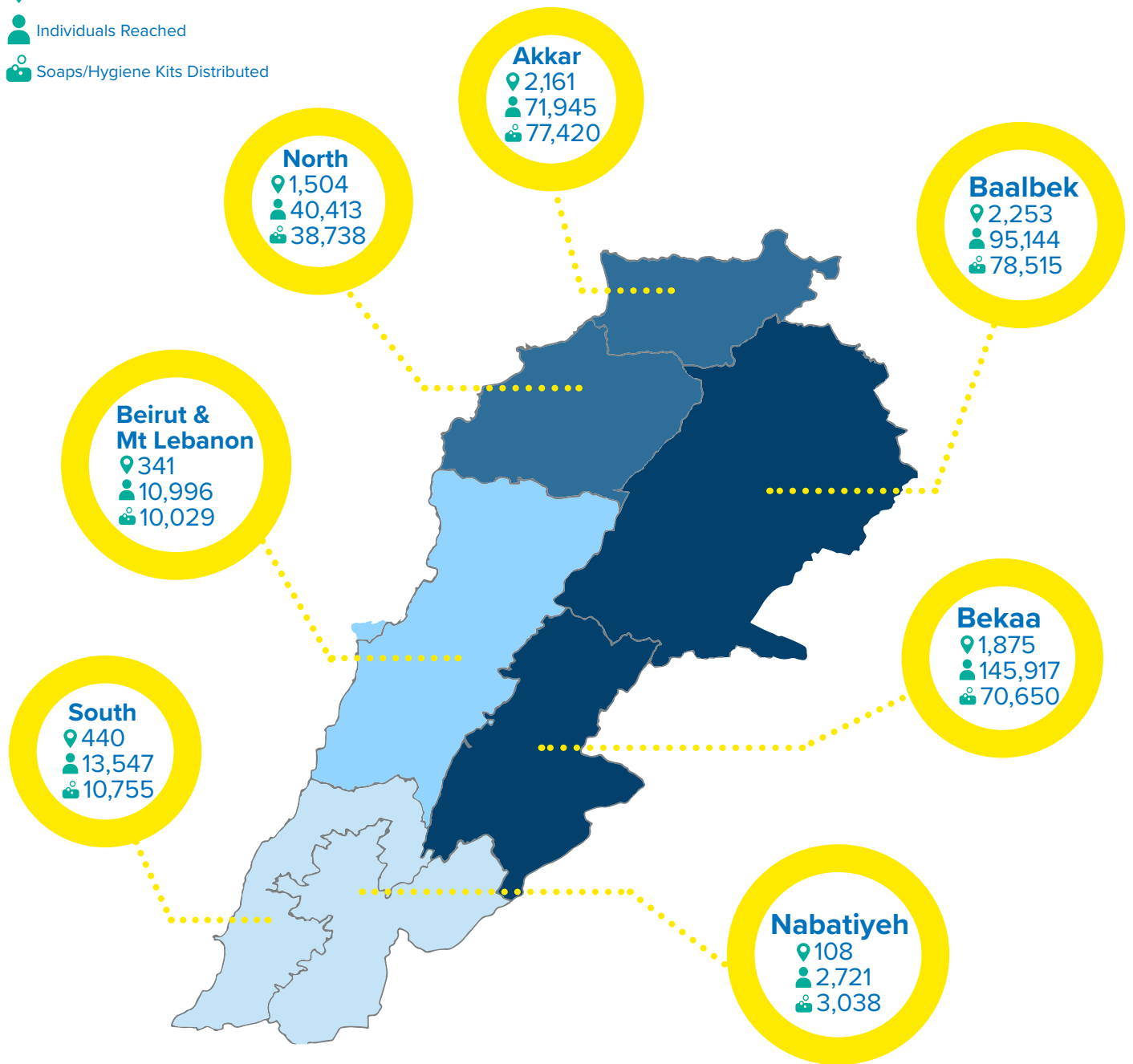
Rapid Response Teams established in **1,311** cadasters



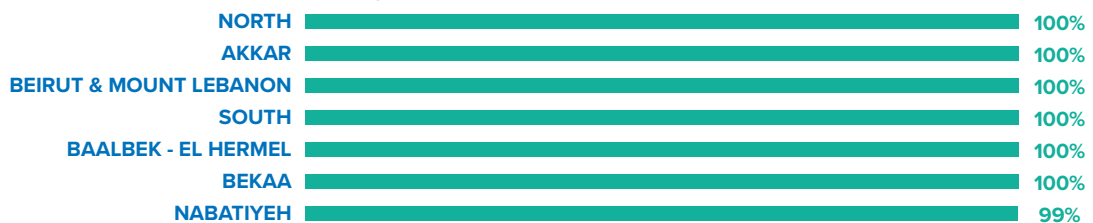
More than **7,184 masks** and **6,000 soap bars** produced by refugees and distributed to refugee and host communities.

# DISTRIBUTION MAP

-  Sites Reached
-  Individuals Reached
-  Soaps/Hygiene Kits Distributed



## Governorate Coverage



Scan the QR code to learn more about the PCR Testing Campaign



**UNHCR**  
The UN Refugee Agency

## Step 2

# CONTAINING TRANSMISSION

Isolation procedures in overcrowded settings

We are setting up and supporting isolation facilities as well as providing related guidance in over-crowded settings where people might not have the possibility to isolate.

### Guidance on Isolation

Standard Operating Procedures on isolation and quarantining of refugees confirmed or suspected of having COVID-19 finalized in compliance with national guidelines.

User Guide for refugees on the isolation and quarantining procedures shared with all refugees known to UNHCR and humanitarian partners providing support.


Terms of reference for site management finalized in compliance with national guidelines and through a consultative process outlining the administrative, management and service delivery accountabilities and responsibilities for Level 3 isolation facilities.




### Supporting Communities' Capacities to Isolate

 Capacity of **10,000** contingency shelter kits ready to be deployed within hours to support L1, L2 and L4 isolation situations.

 More than **480** refugees with medical background mobilized and trained on isolation procedures.

 **1,759** site community groups of 3 to 5 refugee volunteers established across the country to play an active role on isolation procedures.


 Rapid Response Teams of humanitarian partners established and mobilized in **1,311** out of 1,612 cadasters, ready to support on isolation procedures.

 Personal Protective Equipment (PPEs) procured for all UNHCR staff, health workers and Rapid Response Team members.

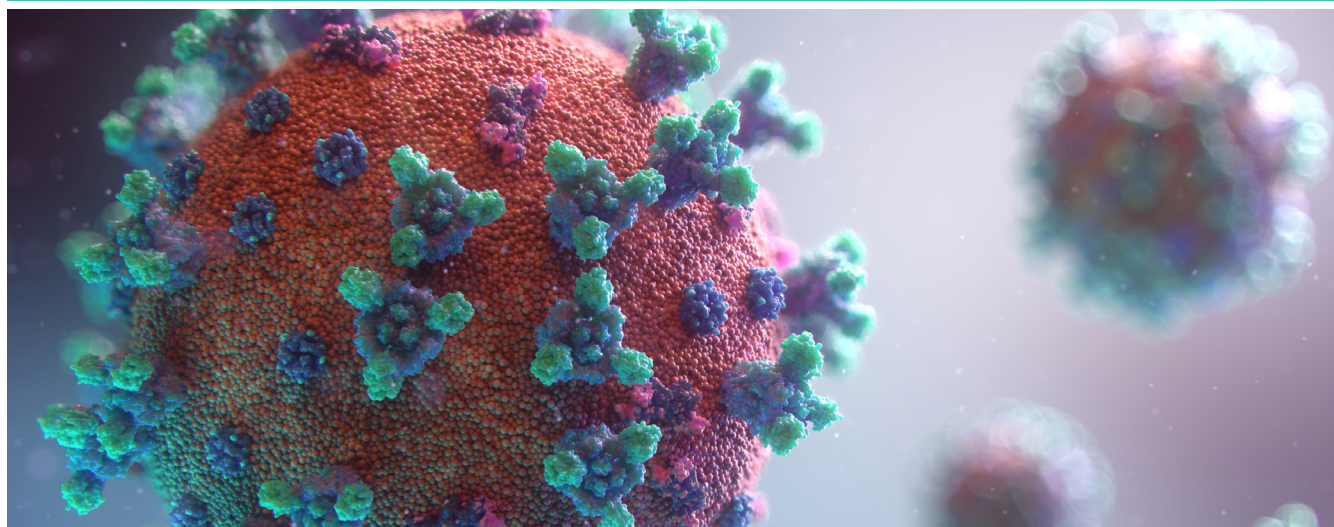
 Distribution of food/hygiene parcels with humanitarian partners, targeting **10,000** vulnerable families.

 A second round of additional cash assistance for 3 months, targeting **12,000** vulnerable refugee families, was launched in August to help them cope with the emergency situation, on top of the **57,614** vulnerable refugee families receiving regular multi-purpose cash assistance.

### Support Sample Testing in Overcrowded Settings

 In collaboration with WHO, AMEL and IOCC, UNHCR facilitated sample COVID-19 testing for refugees living in overcrowded settings together with MoPH at a planned rate of 200 PCR tests per day and over a period of 5 weeks between May and June.

**147** sites covered across the country  
**3,599** samples collected  
**3,599** results received, all negative



# MAP OF SUPPORT FOR ISOLATION CAPACITIES

**22%**

of Syrian refugees in Lebanon live in informal settlements and collective shelters

**3**

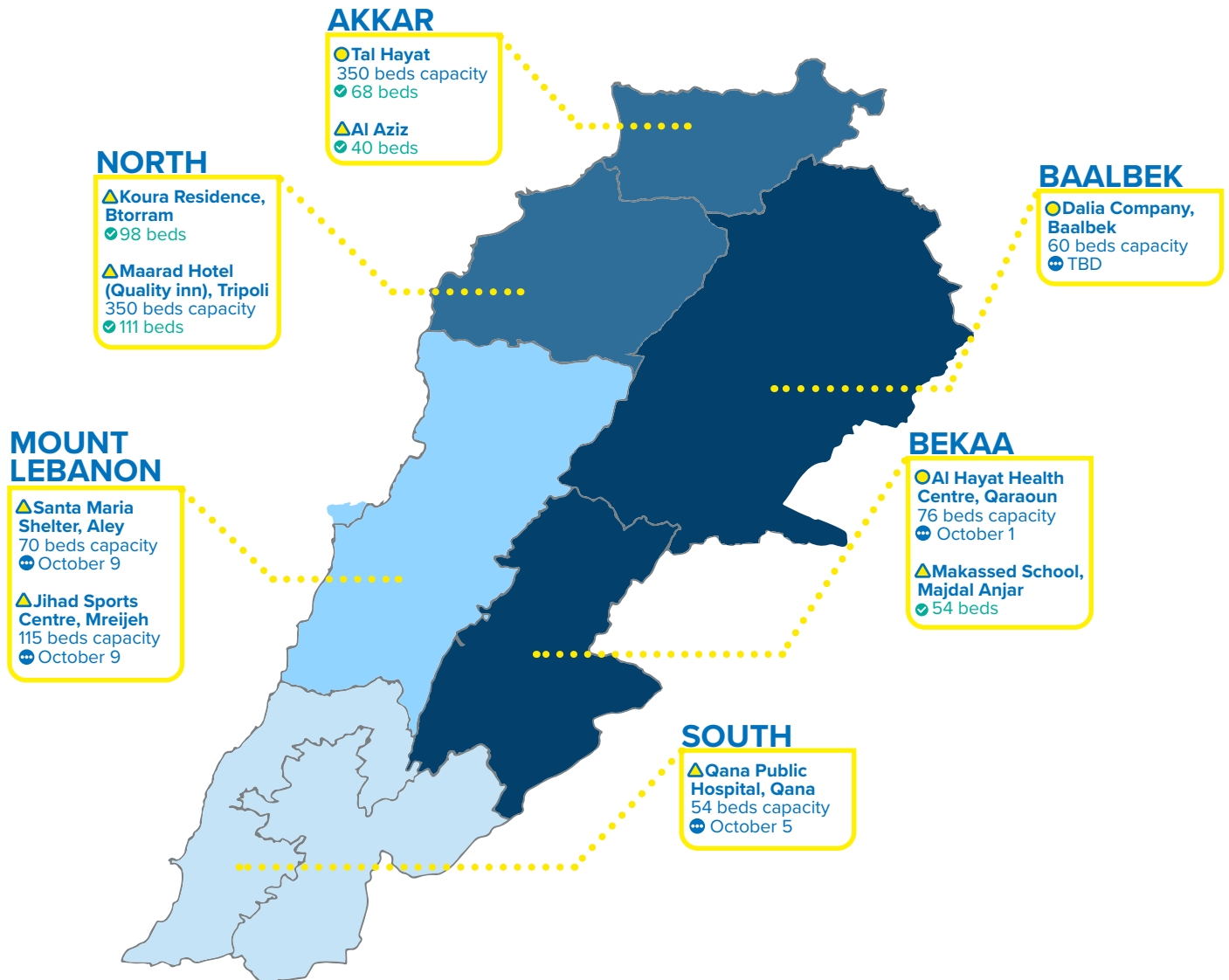
isolation centres being set up in refugee hosting areas

**7**

municipal isolation centres supported by UNHCR in North, South, Bekaa and Mount Lebanon

**5**

sites ready for use with a capacity of **371 beds**



The sites showed on the map are available to all persons in need regardless of nationality or status.

**1,000** sites assessed for L2 isolation capacities  
**388** suitable sites retained

- Ready for use by
- ✓ Ready for use
- Isolation centre
- ▲ Municipal isolation centre



Scan the QR code to watch our video on Isolation Centres in Lebanon



**UNHCR**  
The UN Refugee Agency

## Step 3

# TREATMENT AND CASE MANAGEMENT

The expansion and rehabilitation capacitate 6 public hospitals to receive and treat COVID-19 patients and avoid competition for care. Care is accessible to all patients regardless of nationality.

### Projection



A target of **800** additional hospital beds and **100** additional ICU beds across Lebanon distributed over 3 phases.



Priority phase 1 targeted **6** governmental hospitals in Tripoli, Halba, Baalbek, Beirut, Saida and Zahle.



Zahle Governmental Hospital has been approved and works will start soon to add an additional 64 hospital beds and 10 ICU beds in phase 1.

### Progress



Expansion and rehabilitation works have been completed in all selected governmental hospitals for phase 1, except for Zahle Governmental Hospital. As such, a total capacity of **197** regular admission beds, including medical equipment, ready to receive patients has been added.



A total of **16** additional ICU units have been installed and are ready for use at Halba, RHUH and Saida governmental hospital. At Tripoli and Baalbek governmental hospitals, the additional ICU capacity is not yet operational as the installation of the cooling system has not been finalized.

Given the critical level of ICU capacity in Lebanon, UNHCR is actively assessing the options to activate the second phase of hospital expansions.



Medicine stock for over **22,000** COVID-19 patients, as well as **100** stationary and **20** portable ventilators, were received in country as part of medical items procured by UNHCR for the response. So far, 16 ventilators have been distributed to ICU units in the supported hospitals. All **100** ICU beds and **800** hospital beds were received in country and are being dispatched in phases.

### Support to Hospitals Network

UNHCR is expanding hospital capacity to benefit COVID-19 patients from both refugee and Lebanese communities, through:



The design, construction and equipping of temporary COVID-19 units annexed to selected hospitals, or rehabilitation of existing unused structure within hospitals to be COVID-19 units.



Personal Protection Equipment (PPEs), renewable medical supplies and medicines to enable them to manage COVID-19 cases.

### Coverage of Treatment & Testing

UNHCR covers **100%** of test and treatment for refugee patients.



73 refugee patients have been admitted for COVID-19 treatment under UNHCR's referral care programme



164 COVID-19 tests were covered under UNHCR's referral care programme.

### Expansion of the MoPH COVID-19 Hotline



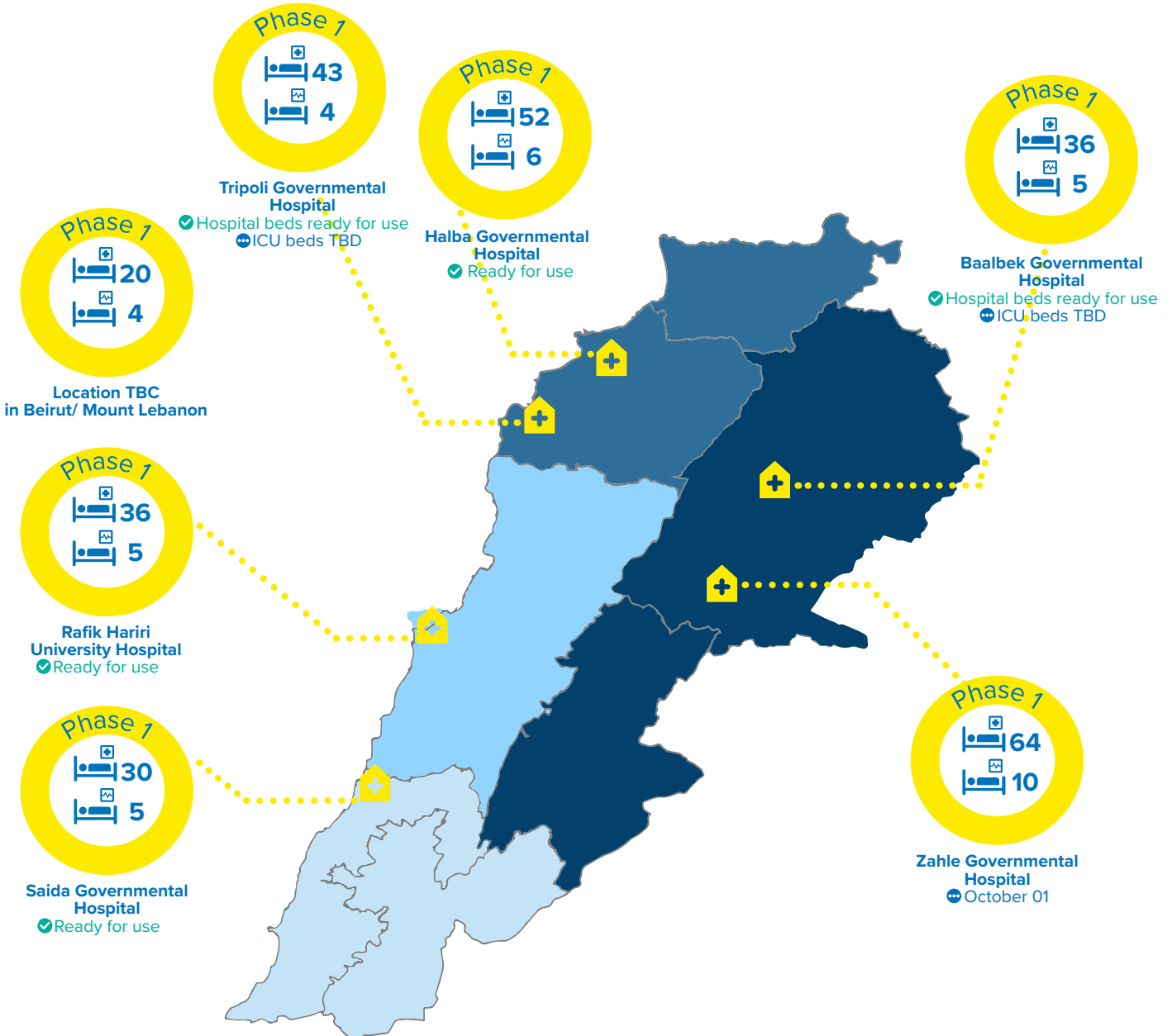
Expansion of the MoPH COVID-19 hotline capacity to take up to **4,500** calls/ day, with 10 additional trained nurses mobilized by AMEL Association to serve as operators and a referral system for refugees calling to be immediately transferred to UNHCR for action.

# PLANNED HOSPITAL EXPANSION PHASE 1

**6**  
Governmental Hospitals

**281**  
Additional Hospital Beds

**39**  
Additional ICU Beds



## Total target over 3 phases

**800** Additional hospital beds

**100** Additional ICU beds

- Hospital bed
- ICU bed
- Ready for use by
- Ready for use



Scan the QR code to watch our video on hospital expansion across Lebanon



**UNHCR**  
The UN Refugee Agency