

Shelter Type

- No Syrians/Not Specified
- Appartment/House
- Tent/Temporary Structure
- Garage, basement, outdoor room[s]
- Unfinished/empty buildings

Governorate

- Jordan Governorates
- Mafrq Governorate

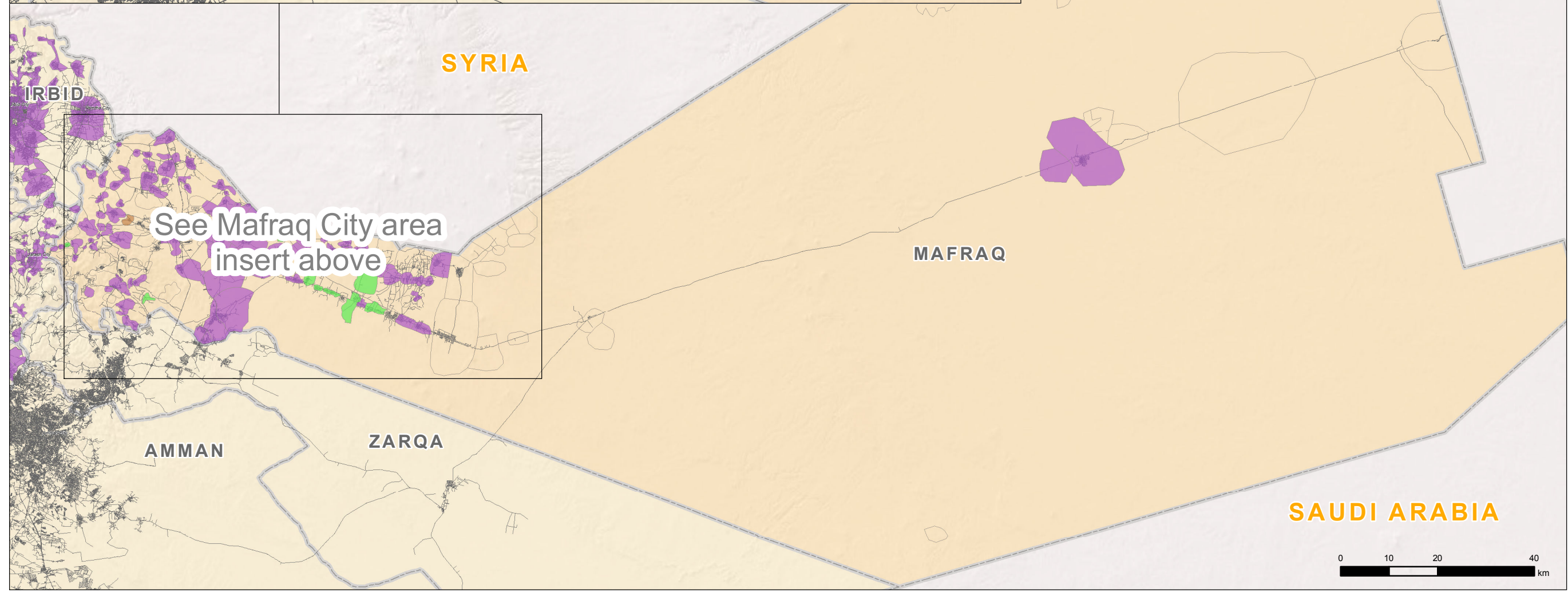
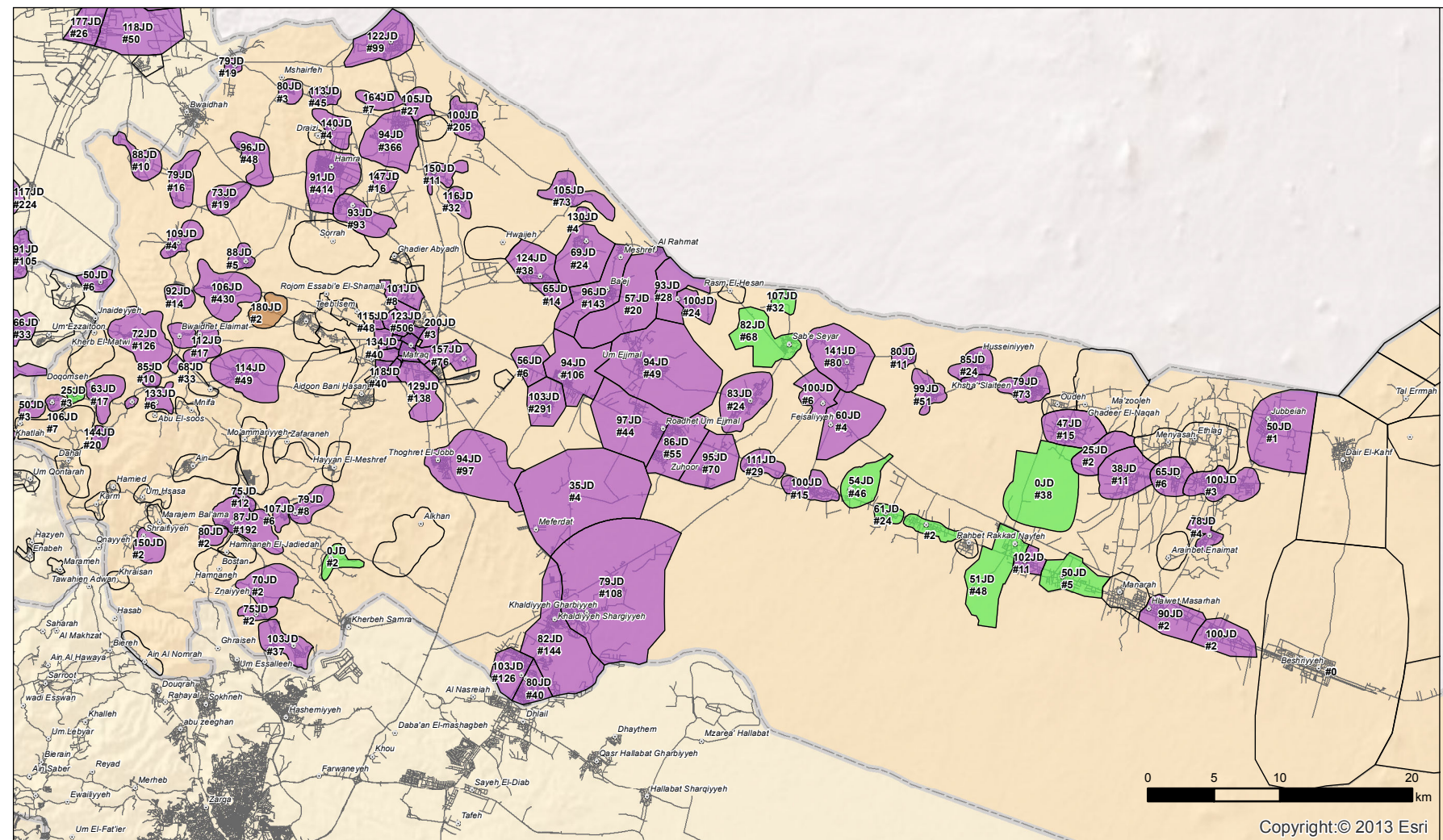
JD Average Monthly Rent Cost (JD)

Number of Households per BSU

Data Sources:
Basic Service Units data:
REACH Key Informant/Household Survey
Administrative divisions, roads and city names data:
OSM

Projection: WGS 1984 UTM Zone 37N
File: JOR_Mafrq_Shelter_A3_10APR2013
Contact: reach.mapping@impact-initiatives.org

The information presented cannot be guaranteed as an exhaustive picture of the situation as it is not based on a census of the refugee population. The predominant types displayed here should be interpreted with caution as their interpretation largely depends on an unknown population size at the "Basic Service Unit" level. The present map reflects a snapshot at a given time and as perceived by the refugee community. Thus, the data from this assessment can be used to discover characteristic patterns but is not legally valid for case based decisions.



See Mafrq City area insert above