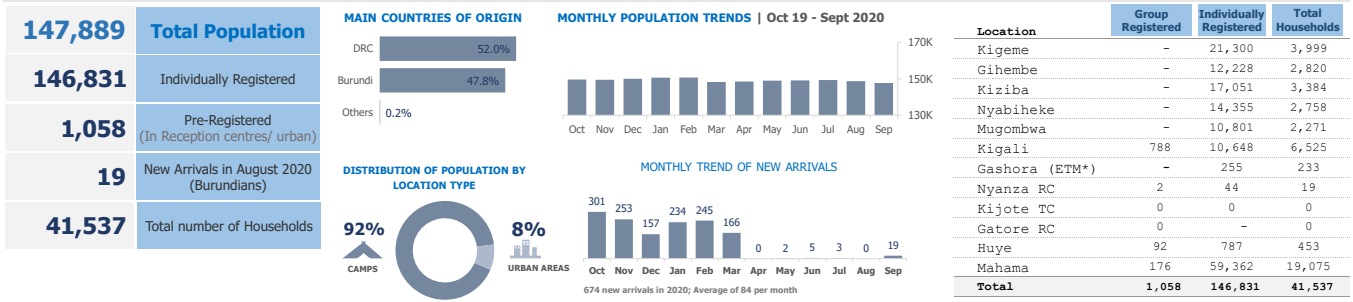


# UNHCR Rwanda - Monthly Population Statistics

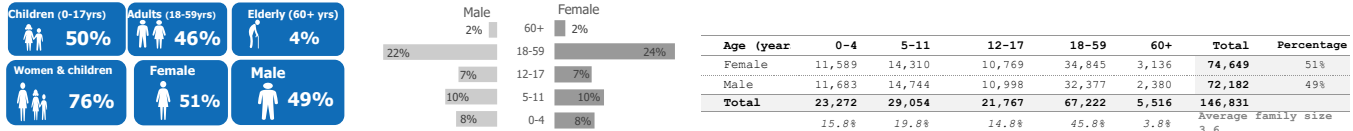
as of 30 September 2020



## KEY POPULATION STATISTICS



## DEMOGRAPHICS

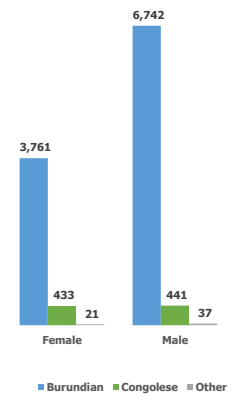


## COUNTRIES OF ORIGIN

Country of Origin	0 - 4 years		5 - 11 years		12 - 17 years		18 - 59 years		60+ years		Total
	F	M	F	M	F	M	F	M	F	M	
Afghanistan	-	-	-	-	-	-	1	1	-	-	2
Angola	2	-	1	-	-	-	4	1	1	-	9
Burundi**	5,875	5,939	6,432	6,823	4,243	4,387	15,072	18,913	1,110	872	69,666
Chad	-	-	-	-	-	-	1	1	3	-	5
Central Africa	-	-	-	-	-	-	-	-	1	-	1
Cameroon	-	-	1	-	1	1	1	3	-	-	7
DR Congo	5,707	5,738	7,868	7,918	6,516	6,524	19,719	13,324	2,025	1,506	76,845
Eritrea*	1	4	3	-	9	69	33	92	-	-	211
Ethiopia*	-	-	-	-	-	1	4	4	-	1	10
Guinea	-	-	-	-	-	-	-	1	-	-	1
Haiti	-	-	-	1	-	-	-	-	-	-	1
Kenya	-	-	-	-	-	-	-	1	-	-	1
Somalia*	3	1	2	1	-	13	8	12	-	1	41
South Sudan	-	1	1	-	-	-	1	8	-	-	11
Sudan*	-	-	-	1	-	2	1	13	-	-	17
Tanzania	1	-	1	-	-	-	-	-	-	-	2
Uganda	-	-	1	-	-	-	-	-	-	-	1
<b>Total</b>	<b>11,589</b>	<b>11,683</b>	<b>14,310</b>	<b>14,744</b>	<b>10,769</b>	<b>10,998</b>	<b>34,845</b>	<b>32,377</b>	<b>3,136</b>	<b>2,380</b>	<b>146,831</b>

\* Includes ETM population

## URBAN POPULATION (GENDER AND NATIONALITY)



## REFUGEES\* FROM DEMOCRATIC REP. OF THE CONGO

Areas of origin	Population	Percentage
North Kivu	67,947	88.4%
South Kivu	6,613	8.6%
Haut-Katanga	1,286	1.7%
Ituri	142	0.2%
Maniema	118	0.2%
Kasai Orient	18	0.0%
Mai-Ndombe	11	0.0%
Equateur	7	0.0%
Kongo Centra	7	0.0%
Other	696	0.9%
<b>Total</b>	<b>76,845</b>	

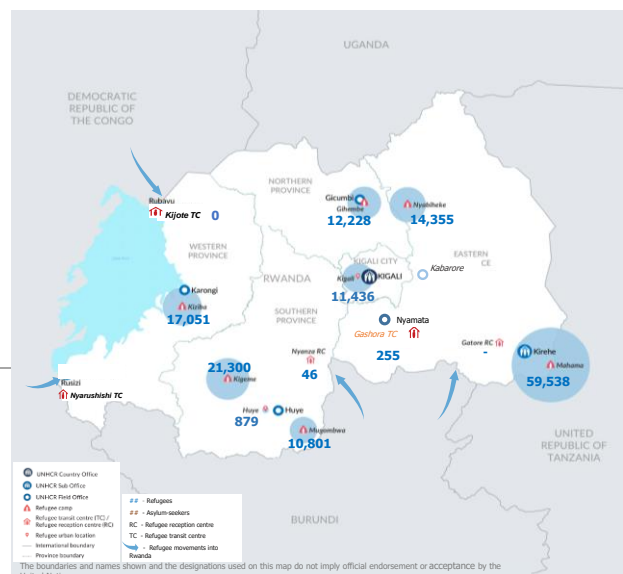
\* Includes asylum-seekers

## REFUGEES\* FROM BURUNDI

Areas of origin	Population	Percentage
Kirundo	40,601	58.3%
Bujumbura Mairie	11,420	16.4%
Muyinga	8,339	12.0%
Ngozi	2,793	4.0%
Karuzi	1,232	1.8%
Cibitoke	716	1.0%
Kayanza	824	1.2%
Ruyigi	550	0.8%
Gitega	493	0.7%
Bubanza	300	0.4%
Other	2,398	3.4%
<b>Total</b>	<b>69,666</b>	

\* Includes asylum-seekers

## POPULATION DISTRIBUTION BY LOCATION IN RWANDA

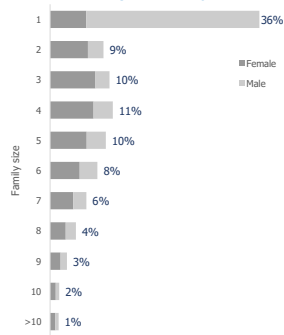


## SPECIFIC PROTECTION NEEDS

Specific Need	Count	Percentage
Child at risk	590	2.4%
Disability	4,868	20.1%
Family unity	505	2.1%
Older person at risk	1,977	8.2%
Serious medical condition	7,711	31.8%
SGBV	1,107	4.6%
Single parent	2,489	10.3%
LPPN	706	2.9%
Torture	659	2.7%
UASC	1,637	6.7%
Woman at risk	2,003	8.3%
<b>Total</b>	<b>24,252</b>	

An individual may have more than one specific need

## FAMILY SIZE BREAKDOWN



Percentage represents proportion of family sizes to the total number of households

## ETM BREAKDOWN BY COO AND GENDER

Country of Origin (ETM)	Female	Male	Total
Eritrea	44	156	200
Somalia	10	22	32
Sudan	1	14	15
South Sudan	0	1	1
Ethiopia	4	3	7
<b>Total</b>	<b>59</b>	<b>196</b>	<b>255</b>

\*\*Total number of Burundians is the individually registered plus the group registered (69666 + 1058 = 70724)

There are 827 Rwandan dependents of registered refugees. They are not included in the above breakdowns.

For More Information: <http://data.unhcr.org/drc/country.php?id=182> and <http://data2.unhcr.org/en/situations/burundi/location/2006>

Contact : Susan Carrera (E-mail: [carrera@unhcr.org](mailto:carrera@unhcr.org))

\* ETM : Emergency Transit Mechanism