

# UPDATE 2: AL AZRAQ REFUGEE CAMP, AZ ZARQA GOVERNORATE, JORDAN

Analysis with WorldView-02 Data Acquired 28 December 2013 and QuickBird-2 Data Acquired 14 September 2013

This map illustrates the refugee camp currently under construction in Al Azraq, Jordan using an image collected by the WorldView-2 satellite on 28 December 2013. As of 28 December 2013 a total of 3,174 structures were detected in the camp, 2,431 infrastructure and support buildings and 743 tent shelters. Preparations are continuing so as to accommodate additional incoming refugees. The previous analysis done by UNOSAT using an image from 14 September 2013 detected a total of 2,689 infrastructure, support buildings and shelters. This is an increase of approximately 18%. Paved and unpaved roads have likewise increased significantly and define the transportation network in and around the camp. Water and sanitation services are also under development in multiple camp zones suitable for supporting thousands of proximate shelters. This is a preliminary analysis and has not yet been validated in the field. Please send ground feedback to UNITAR / UNOSAT.

Refugee Camp

Production Date:  
20/01/2014

Version 1.0

Activation Number:  
CE20130604SYR



### LEGEND

- Camp infrastructure / Administrative Building
- Tent Shelter
- Camp Extent
- Pipeline
- Fence
- Highway
- Primary Road



Map Scale for A3: 1:20,000

0 0.1 0.2 0.4 0.6 0.8 1 Kilometers

Satellite Data (1): WorldView-02  
Imagery Date: 28 December 2013  
Resolution: 50cm  
Copyright: DigitalGlobe, Inc.  
Source: US Department of State, Humanitarian Information Unit, NextView License  
Satellite Data (2): QuickBird-2  
Imagery Date: 14 September 2013  
Resolution: 60cm  
Copyright: DigitalGlobe, Inc.  
Source: US Department of State, Humanitarian Information Unit, NextView License

Road Data : Google Map Maker / OSM / ESRI  
Other Data: USGS, UNCS, NASA, NGA  
Analysis : UNITAR / UNOSAT  
Production: UNITAR / UNOSAT  
Analysis conducted with ArcGIS v10.1

Coordinate System: WGS 1984 UTM Zone 37N  
Projection: Transverse Mercator  
Datum: WGS 1984  
Units: Meter

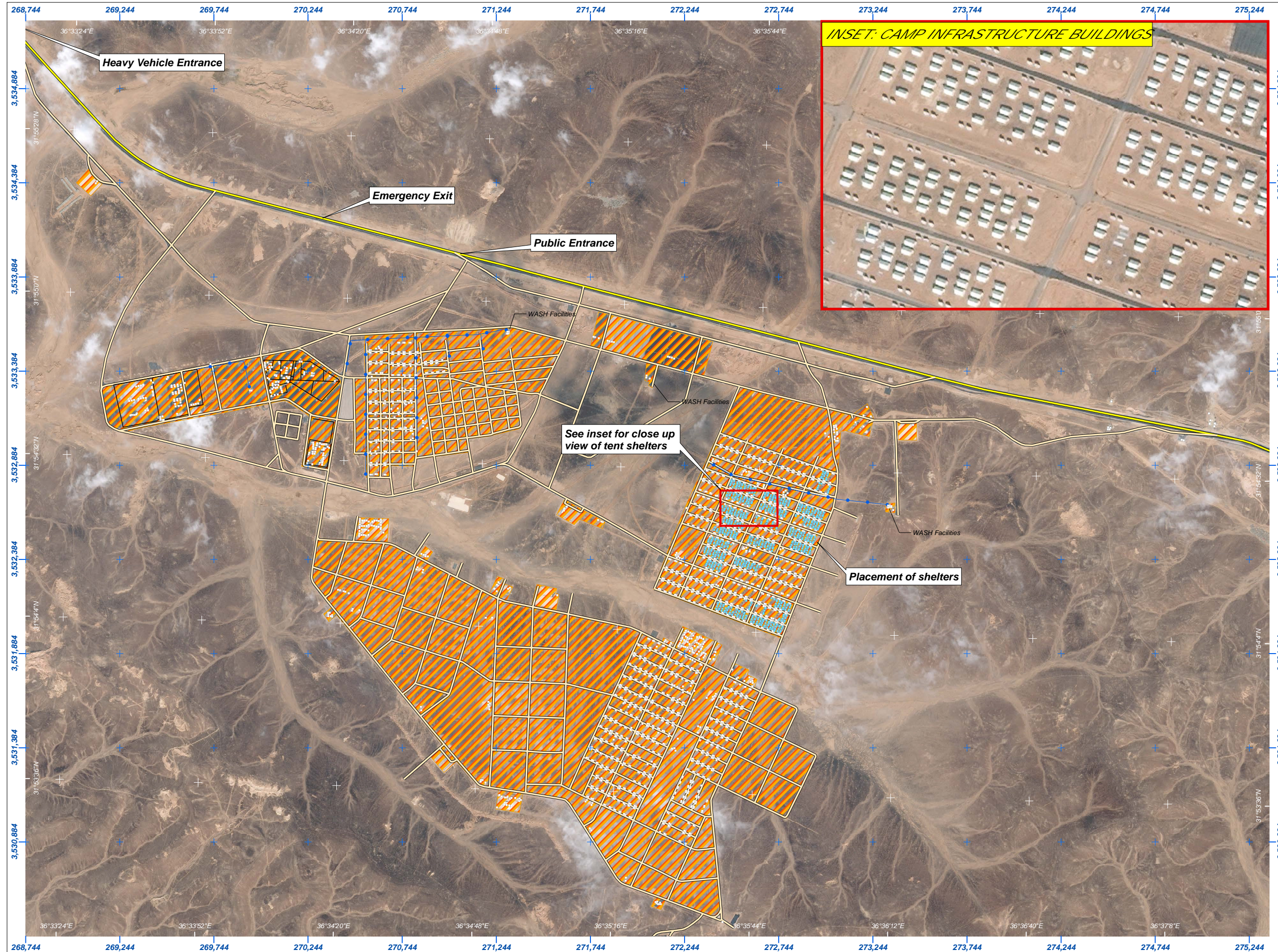
The depiction and use of boundaries, geographic names and related data shown here are not warranted to be error-free nor do they imply official endorsement or acceptance by the United Nations. UNOSAT is a program of the United Nations Institute for Training and Research (UNITAR), providing satellite imagery and related geographic information, research and analysis to UN humanitarian and development agencies and their implementing partners.

This work by UNITAR/UNOSAT is licensed under a Creative Commons Attribution-NonCommercial-ShareAlike 3.0 Unported License.



# UNOSAT

Contact Information: [unosat@unitar.org](mailto:unosat@unitar.org)  
24/7 Hotline: +41 76 487 4998  
[www.unitar.org/unosat](http://www.unitar.org/unosat)



### INSET: CAMP INFRASTRUCTURE BUILDINGS



See inset for close up view of tent shelters

Placement of shelters