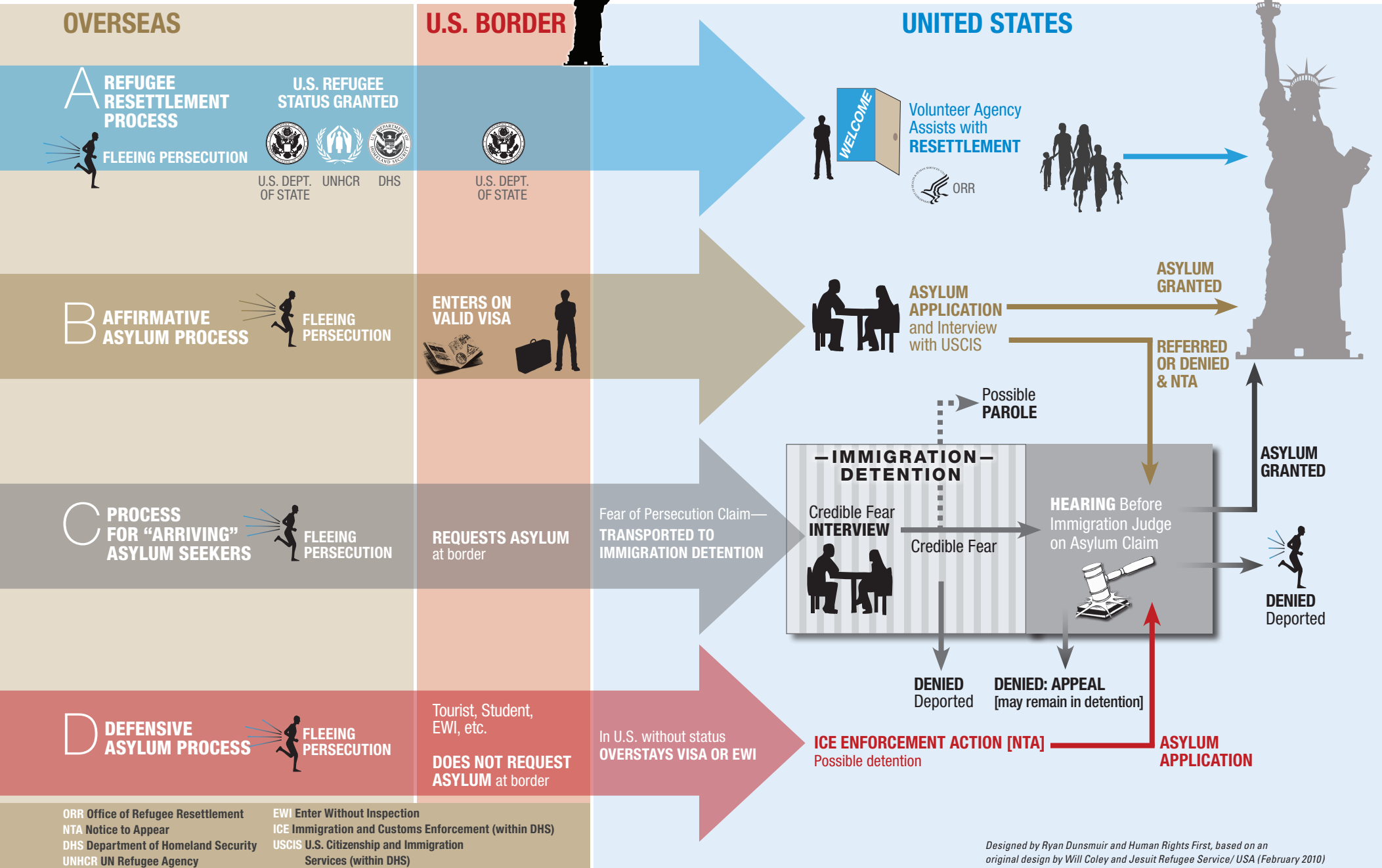


# How Refugees Get to the U.S.



- \* USCIS: U.S. Citizenship and Immigration Services
- \* IJ: Immigration Judge
- \* CFI: Credible Fear Interview
- \* ICE: Immigration and Customs Enforcement
- \* NTA: Notice to Appear Document
- \* BIA: Board of Immigration Appeals
- \* DHS: Department of Homeland Security

## Overview of Asylum Processes

