

HIGHLIGHTS:

- UNHCR organized World Refugee Day events (20 June), including celebrations in all refugee camps and a series of events for urban refugees in Kigali and Huye, based on the theme of refugee self-reliance and inclusion in national development systems.

The national events were celebrated in Kiziba camp during the day to handover 60 classrooms to the Government of Rwanda and to launch the IOC Sports Project, followed by an evening cultural event at the Marriott in Kigali. The cultural event featured an exposition of refugee entrepreneurs and artisans who are owning businesses or producing high quality goods competitive in the national and even the international market. After a performance of traditional dancing by Congolese urban refugees, and before Burundian models graced the catwalk, a Congolese refugee youth provided a testimony about his life in Gihembe camp in Rwanda and his aspirations for his future now that he has been accepted and sponsored to pursue a Master's degree with New York University in the United States. His achievement was also praised by U.S. Ambassador Erica Barks-Ruggles during her remarks at the event. Stories continued: www.unhcr.org/rw



Models from Mahama perform at the Kigali event (top photo) and refugee basketball teams launch the IOC Sports Project in Kiziba camp (bottom photo).

KEY STATISTICS (30 JUNE 2017)

3,786

New arrivals have been received in Rwanda in 2017

1,809

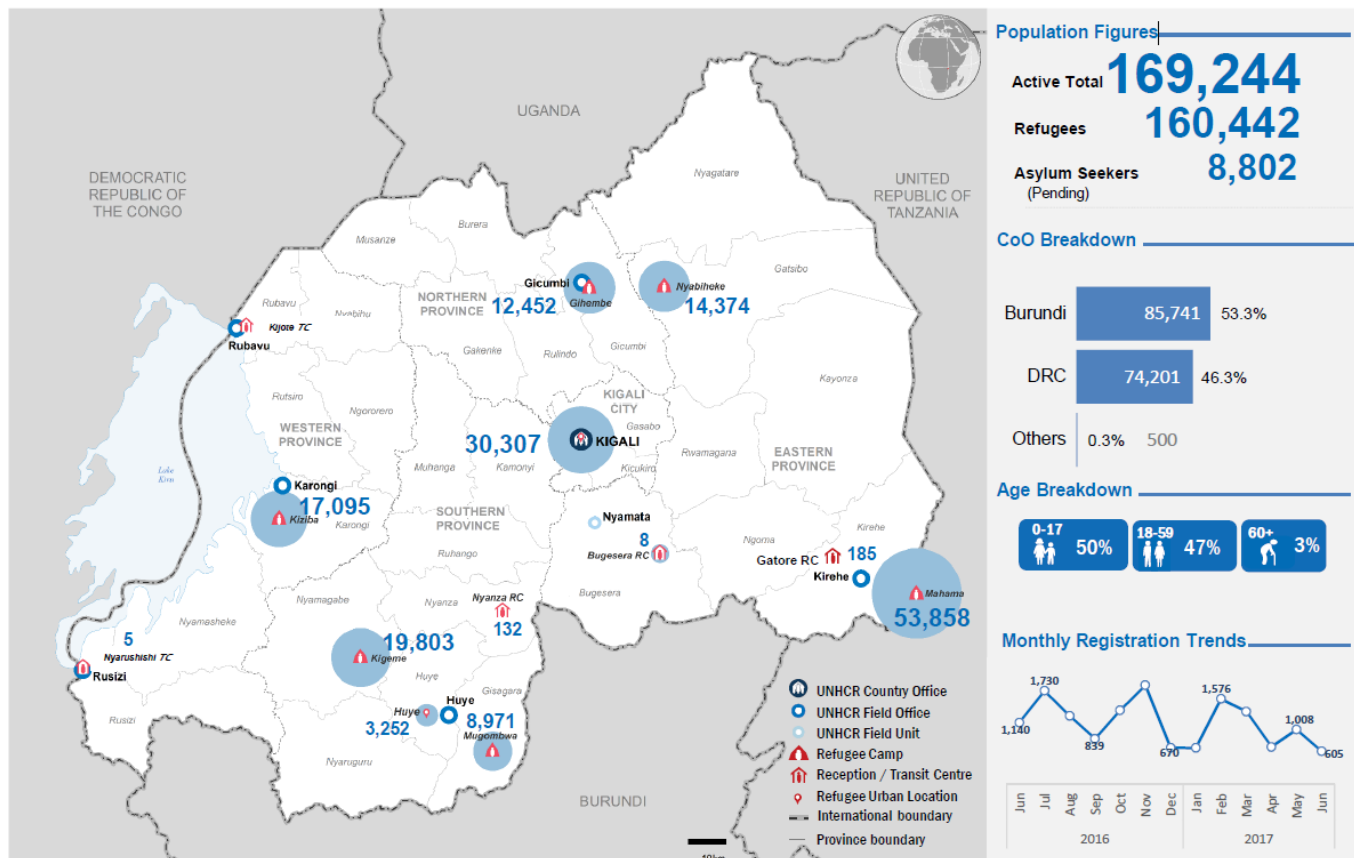
Refugees who are unaccompanied or separated from their parents

33,559

Refugees living in urban areas

4,648

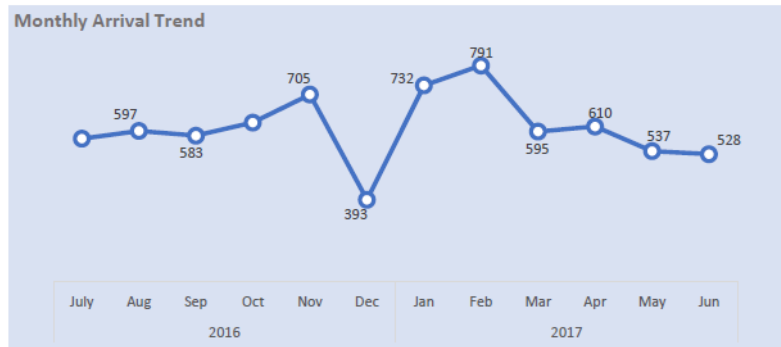
Rwandan returnees received in 2017



BURUNDI EMERGENCY UPDATE

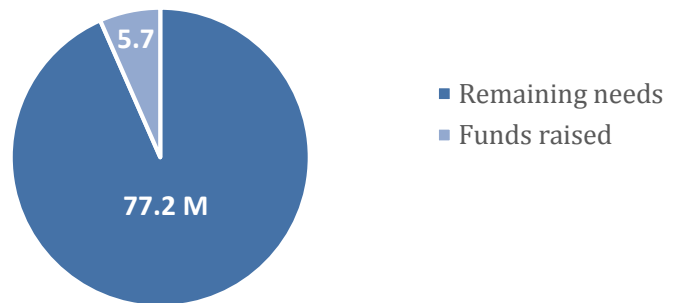
New arrivals:

- **528 new arrivals** were received in June, which is a slight decrease from May (537). The average number of new arrivals in June was 18 individuals per day.
- According to refugees living in rural areas, local leaders are encouraging them to move to Mahama camp.



Burundi Refugee Response Plan (RRP) – Funding Status

The comprehensive needs for the 2017 interagency Burundi refugee response in Rwanda are estimated at **USD 82.9 million**. As of June 2017, only **USD 5.7 million** had been reported received by all appealing agencies. The latest RRP Interagency Funding Update is available on the UNHCR Burundi Data Portal: <http://data2.unhcr.org/en/situations/burundi>.



Food Security and Nutrition

- WFP has received an internal loan in order to ensure full food assistance for the month of June. However, a possible drastic cut in food rations is foreseen onwards, if no further contributions are received from donors. UNHCR is working on a contingency plan in case WFP does not manage to secure additional funding.

Protection

- At the end of June 2017, there was a total number of **1,365** Burundian unaccompanied and separated children (UASC) registered as refugees in Rwanda, including 585 unaccompanied children (UAC) and 781 separated children (SC).

Shelter and NFIs

- To date, a total of 5,172 semi-permanent shelters have been constructed, housing a total of 36,804 refugees or approximately 68 percent of the total population of the camp.

- 17,151 refugees continue to live in 112 communal plastic shelters in the camp. Despite continued advocacy, 30 hectares of land has still not been provided to enable UNHCR to complete the construction of all needed semi-permanent shelters to adequately house the entire camp population.
- Rehabilitation work was carried out to repair 62 structures and 0.289 km access road constructed manually.



Health

- A total of 20,499 consultations were made in both camp clinics (Mahama I & II). The number of consultations per clinician per day was 80 patient/clinician/day, far higher than the standard of 50 patient/clinician/day.
- As part of HIV prevention, care and treatment services supported by UNHCR, a cumulative number of 715 patients received anti-retroviral medication and other supports, among them 116 are pregnant and lactating mothers who were also enrolled into Prevention of Mother to Child Transmission (PMTCT) program.
- Screening for malnutrition along with a campaign for vitamin A and deworming treatment was conducted.
- A total of 63 Community Health Workers have been trained on malaria case management.

CONGOLESE REFUGEE PROGRAM UPDATE



Protection

- UNHCR and MIDIMAR officially launched the International Olympic Committee (IOC) Sports Project on World Refugee Day with basketball teams composed of Congolese and Burundian refugees from different camps competing together at the event held in Kiziba. Refugees from Nyabiheke, Mahama and Kiziba camps competed with each other. With a financial contribution from the IOC of close to USD 400,000, UNHCR's project, which will run for a period of three years starting from 2017, will aim to rehabilitate and erect sports grounds, strengthen existing sports activities and introduce new ones, raise awareness of the benefits of sport among the camps' young people, their parents and the wider communities and train local youth as sports trainers to ensure its sustainability. It will aim to empower adolescents and young adults by enhancing their life skills and competences through structured sports activities; as well as use sport as an important tool of protection and to enhance positive interactions and ensure a peaceful coexistence between refugees and the host communities.

Resettlement to a third country

Recent changes in USA resettlement policies have resulted in a lower number of refugees departing Rwanda.

- Total submissions in June 2017: N/A
- Total submissions in 2017: 1,202 individuals (326 cases)

- Total departures in May 2017: 73 individuals (20 cases)
- Total departures in 2017: 791 individuals (284 cases)



Health

- A total of 18,204 refugee patients from all Congolese refugee camps were provided with medical care at camp refugee health facilities. Refugees were provided with secondary and tertiary health care on prioritized basis by AHA and ARC with the support of UNHCR.
- Respiratory tract diseases continued to be the leading cause of morbidity in all Congolese refugee camps during the reporting period, which represented 45% of the total proportional morbidity. Intestinal worms constitute 7% and Gastritis 6%.

- There were a total of 176 births, with 99% of deliveries conducted at a health facility. Refugee women also have access to antenatal and postnatal care services through UNHCR health partners.
- HIV services were provided to a total of 552 patients.



Food Security and Nutrition

- Preliminary results for Standardized Expanded Nutrition (SEN) Survey 2017 for Congolese camps have been shared with stakeholders. The aim of SENS was to assess the overall nutrition and health situation and related indicators among the refugee population in the six refugee camps in Rwanda.
- Full food basket (in-kind and cash transfer) was provided to Congolese refugees in the month of June.



Water and Sanitation

- The Water and Sanitation sector is presently experiencing an improvement in Gihembe camp. The Church of Jesus Christ of Latter-day Saints (LDS) has so far completed 32 dischargeable latrine blocks out of a planned donation of 40 blocks (12 drop holes each). In addition to the previously existing 16 blocks constructed by UNHCR, the camp of approximately 13,000 refugees will be served by 56 blocks upon completion of the LDS project paving way for completely phasing out pit latrines, which are less hygienic and also considered environmentally unfriendly. UNHCR's Water and Sanitation Partner, American Refugee Committee (ARC), has ensured that all dischargeable latrines are connected to the camp's water system to improve hygiene.
- LDS is also constructing 2 latrines (24 drop holes) for the host community school located near Gihembe camp, GS Kageyo, where refugees attend school alongside host community students.
- In Gihembe, water consumption during the period under review averaged at 20 liters per person daily achieving for the first time in this camp UNHCR's standard for supply of potable water. This also marks a consistent improvement in water delivery in the camp following the completion of a 250m³ water tank project implemented jointly by UNHCR, UNICEF, and WASAC in 2016 thanks to support to UNHCR from the Central Emergency Response Fund (CERF).
- In Nyabiheke camp, UNHCR and ARC are presently engaged in discussions with the Water and Sanitation Agency of Rwanda (WASAC) aimed at connecting the camp to the Gatsibo District's water lines to improve water supply, which has averagely stood at 13 liters per person daily over a long period of time. The camp is currently dependent solely on water from 2 boreholes distributed to the population by two generators which experience persistent breakdowns.
- LDS has plans to start latrine constructions In Nyabiheke, to bridge the widening gap of access to drop holes and also to improve sanitation by helping phase out the pit latrine system.

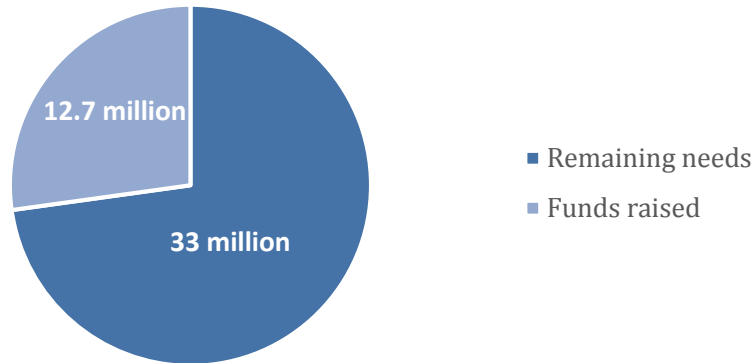


Shelter and NFIs

- To comply with the government's new ban on the use of plastic sheets in refugee camps, shelter construction activities have stalled to a large extent. This ban coincided with the rainy season during which many shelters collapsed in the camps therefore affecting the availability of houses for some refugees. Meanwhile it is worth mentioning that thanks to a new "Shelter Ownership approach" still under implementation in both Gihembe and Nyabiheke camps, shelter rehabilitation has undergone some considerable improvement in spite of reduced budgetary support. This newly introduced approach has positively impacted beneficiaries where they participate in constructing their own shelters, while vulnerable refugees continue to receive full assistance for constructing their shelters.
- UNIQLO has made a generous donation of clothing to all refugees in Rwanda, and distribution has commenced in both Gihembe and Nyabiheke camps, to be followed by distribution in other camps.

Financial Information – CONGOLESE REFUGEE PROGRAM

The needs for the 2017 Congolese program amount to **USD 45.7 million**. Only **USD 12.7 million** has been raised to date.



UNHCR is grateful for the generous contributions of donor countries who have given un-earmarked and broadly earmarked contributions as well as the following key donors who have directly contributed to the operation in 2016-2017:

United States of America | UK Department for International Development (DFID) | Government of Japan | EU Humanitarian Aid and Civil Protection department (ECHO) | Netherlands | Canada | Finland

Contacts:

Martina Pomeroy, External Relations Officer, pomeroy@unhcr.org, Tel: +250-252-589-874, Cell: +250 (0) 78-830-2769

Erika Fitzpatrick, Associate PI/Reporting Officer, fitzpat@unhcr.org, Tel: +250-252-589-874, Cell +250 (0) 78-838-9828

Daily Statistics: <http://data2.unhcr.org/en/situations/burundi> UNHCR Rwanda: www.unhcr.org/rw Twitter: @RefugeesRwanda