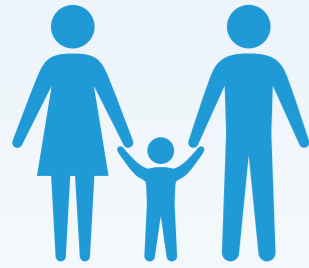


# MUNICIPAL PROTECTION PROFILE: SAGUIARAN, LANA DEL SUR

Armed Confrontations and Displacement in Marawi (AFP vs Pro-ISIS Militants)

Quick  
Protection  
Profile

## BASIC INFORMATION



**24,619** (as of 2015)  
**Population**

**Meranaw**  
Majority

**Meranaw**  
Main Language

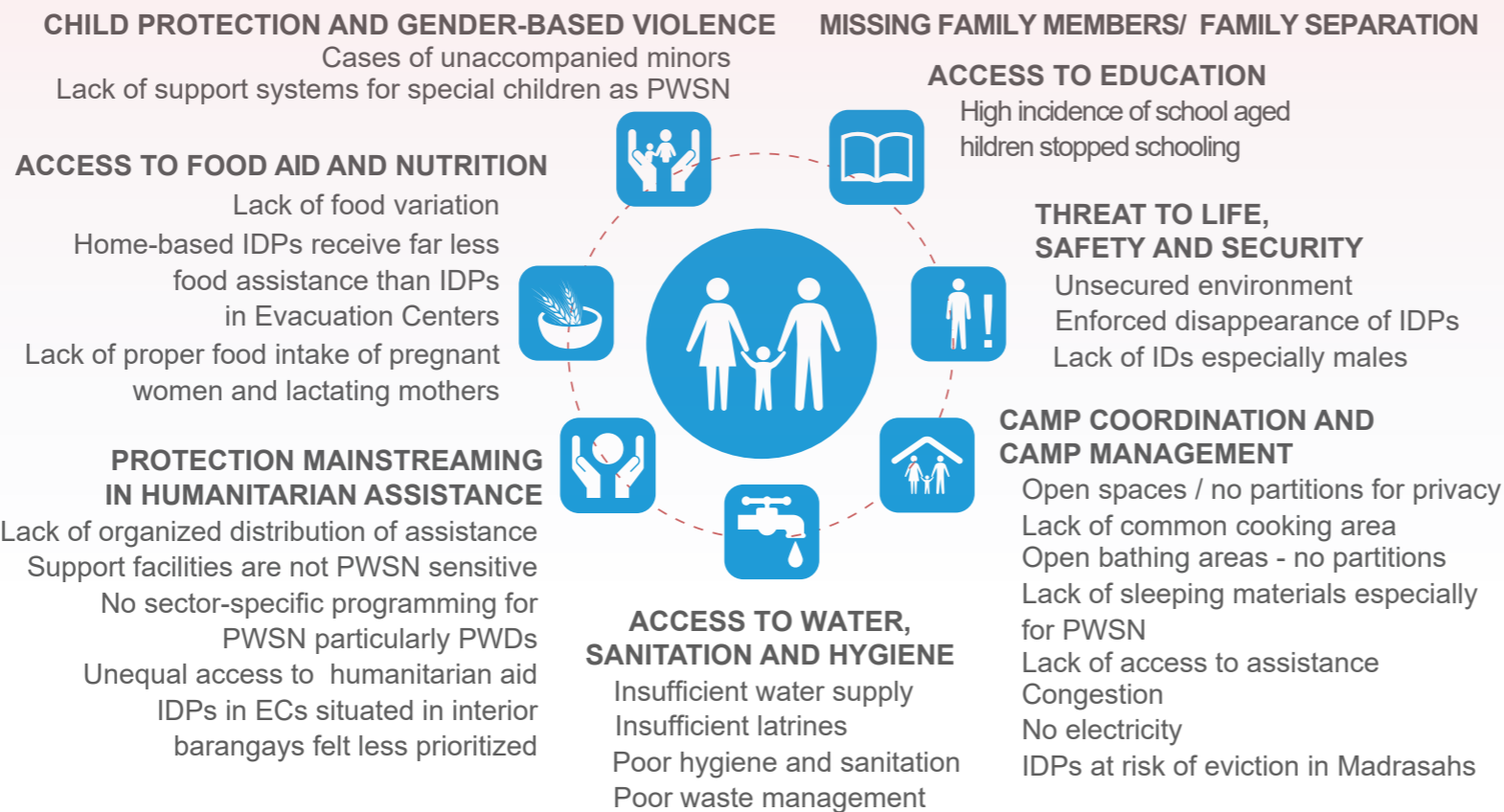
**30**  
**Barangays**

**51.35 km<sup>2</sup>**  
Area size

**4th**  
Income Class  
(annual income between PHP 25 million and PHP 34.9 million)

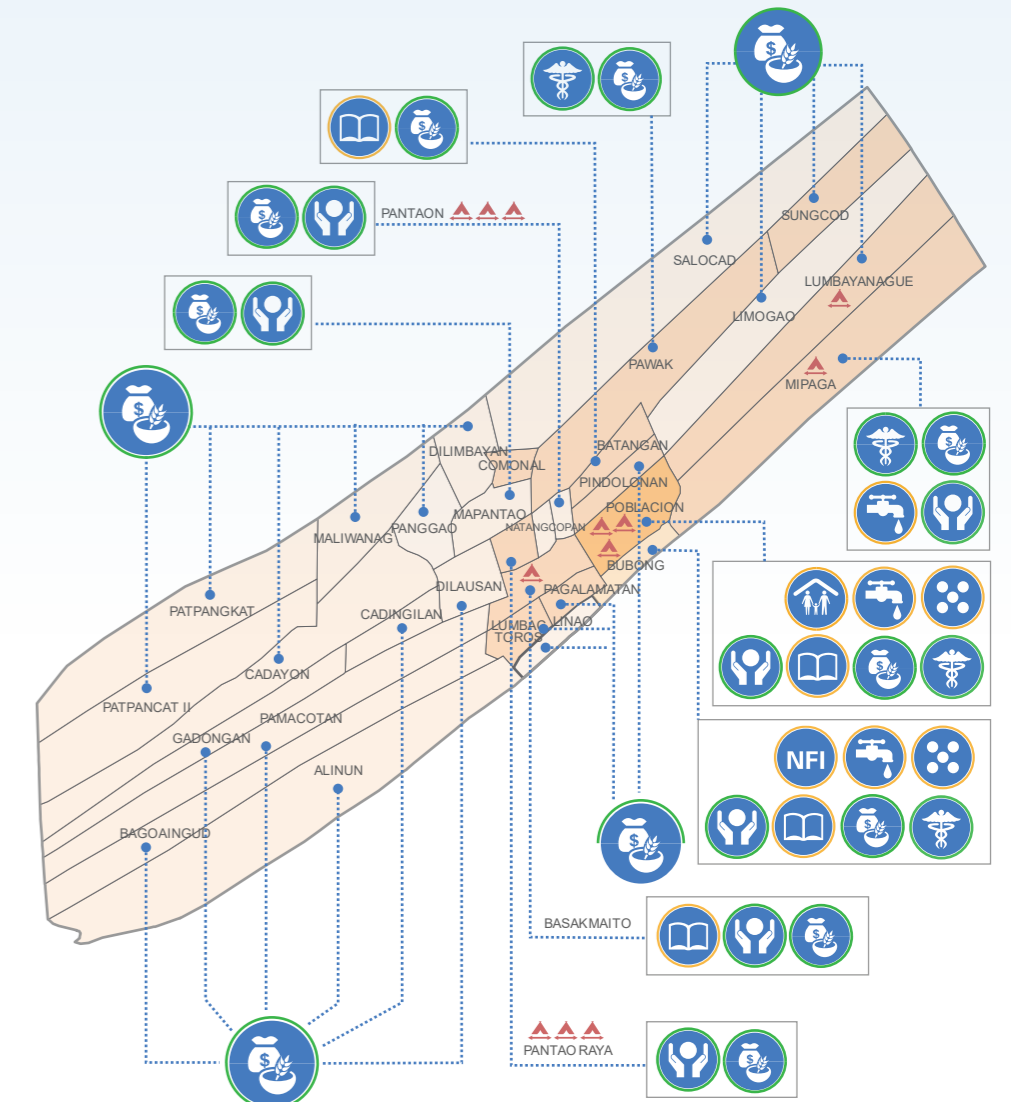
## MAJOR PROTECTION ISSUES RECORDED

SINCE 22 JUNE 2017



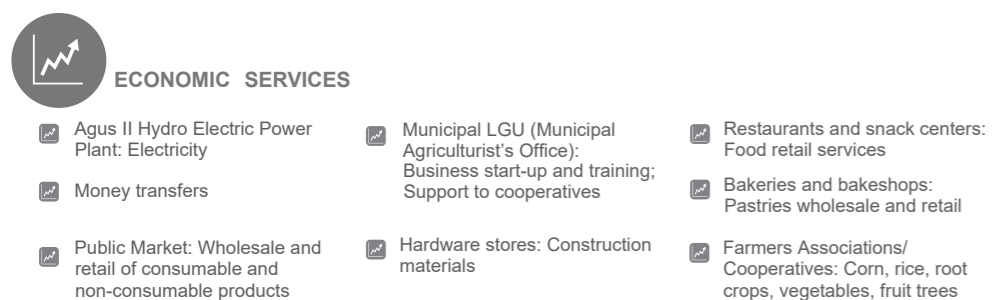
## HUMANITARIAN RESPONSE MAP

SOURCE: OCHA 3W AS OF 19 JULY 2017



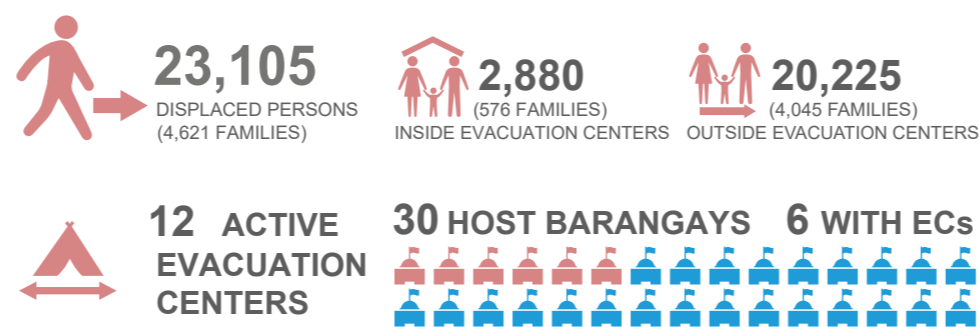
## SERVICES AVAILABLE

PRIOR TO THE CRISIS



## DISPLACEMENT

DATE OF DISPLACEMENT: 23 MAY 2017



SOURCE: SAGUIARAN MUNICIPAL LGU (as of 24 July 2017)



Photo credit: newsinfo.net, PIA.gov.ph, davaotoday.com, nvfoundation-ph.org



The Quick Municipality Protection Profile aims to provide a snapshot of the basic demographics, absorptive capacity and general situation of host municipalities affected by the Marawi Crisis. This may be used as a starting point for information and analysis that can help humanitarian agencies, policy makers and other stakeholders concerning their emergency response. The information reported in the Quick Municipality Profile has been received from members of the Protection Cluster responding to the crisis. Consequently, the information will be updated on a regular basis as more information is received from members. Although efforts are made to verify the data, the Protection Cluster takes no responsibility for the incompleteness or inaccuracy of the information. The information provided in this Municipality Profile does not necessarily reflect the views of UNHCR or any individual member of the Protection Cluster.