

Item Application Sample



General Information and Description

Synthetic sleeping mats are used to sleep on and must be waterproof, non toxic, tear proof and material trim finished.

Technical Specifications

Material:

The mats should be made from 100 % synthetic yarns from eather virgin, raw material or mixed with recycled fibres (for example such as recycled polyester). Synthetic sleeping mats must not contain fillers, like calcium carbonate or any other type.

The synthetic yarns in a tightly woven 2/2 twill structure, using a monofilament or multifilament warp (PP tubes without fillers minimum 1000 tubes per meter length and thick tape PP or polyester yarn in weft. The two short sides to be secured with a first stitch folded hem of the mat, plus one bias 40mm binding tape of minimum 10 g/m with stitches through the fabric of the mat, OR with a double folded stitched hem. Four sides trim finished.

Sleeping mat finished size: 180 x 90 cm \pm 2%

Sleeping mat area: 1.62 m² \pm 2%

Weight: 0.500 kg/m² minimum \pm 5%

Color: Plain color, white, creamy or blue

Bursting Strength: ISO13938: 700 kPa minimum.

Tear Strength: The edges of the mat should not be tearable when strongly pulled outside by hand or other similar force.

Packing

Sleeping mats are packed in polypropylene protective bales of 25 pieces firmly secured with 4 strong straps. No individual packing required. However different packing methods may be accepted in order to maximize loadability in pallets and containers.

Weight of packing unit: 21.5 kg approx.

Note: It is important that the binding is secure and durable to prevent fraying of the mat which would result in rapid disintegration of the structure.

Weight and Volume

Gross weight per piece: 0.769 to 0.8505 kg approx.

Gross weight per bale: 19.2 to 21.5 kg approx.

Bale size: 92 x 40 x 50 cm approx.

Volume: 0.184 m³ approx.

Expected Life Span

It is expected that sleeping mats will have a shelf life of minimum 4 years and that will last for a minimum of 12 months of use under hard tropical conditions.

Optimal Shipping / Container Information

4,500 pieces, 40 pallets per 20' DC container (palletized)
9,000 pieces, 80 pallets per 40' DC container (palletized)
9,000 pieces, 80 pallets per 40' HC container (palletized)

6,000 pieces, 240 bales per 20' DC container (unpalletized)
12,000 pieces, 480 bales per 40' DC container (unpalletized)
14,000 pieces, 560 bales per 40' HC container (unpalletized)

CRI Pallet Details

Fumigated as per IPSM 15 standard. Dimensions (L x W x H): 1150 x 770 x 144 mm. Maximum height of the packed pallet: 115 cm. Pallets should be shrink-wrapped and strapped. The palletized goods must not exceed the length and width of the pallet. For further information please refer to section IV Pallet Information.

Manufacturer Marking

Every unit should include a tag, stitched in the hem, with the manufacturer's identification (letters not higher than 1.5 cm). The tag should include the manufacture's name, unique reference batch number and the date of manufacture. No company logo should be included with the manufacturer's marking.

TAG with UNHCR Logo

UNHCR logo woven into the mat is preferred. In case a tag logo is accepted, it should be stitched in the mat in a way to prevent flapping, to avoid the tag being torn off.

Tag size: 20 x 20 cm

Tag material: Teflon

Tag Colour: White

Font: Helvetica Bold

Colour specification: Pantone Blue 300 or quadrichrome (CMYK).

C = 100 %, M = 45 %, Y = 0 %, K = 0 %

UNHCR Logo

UNHCR visibility logo should be woven into the mat.

Logo size: 120 x 30 cm

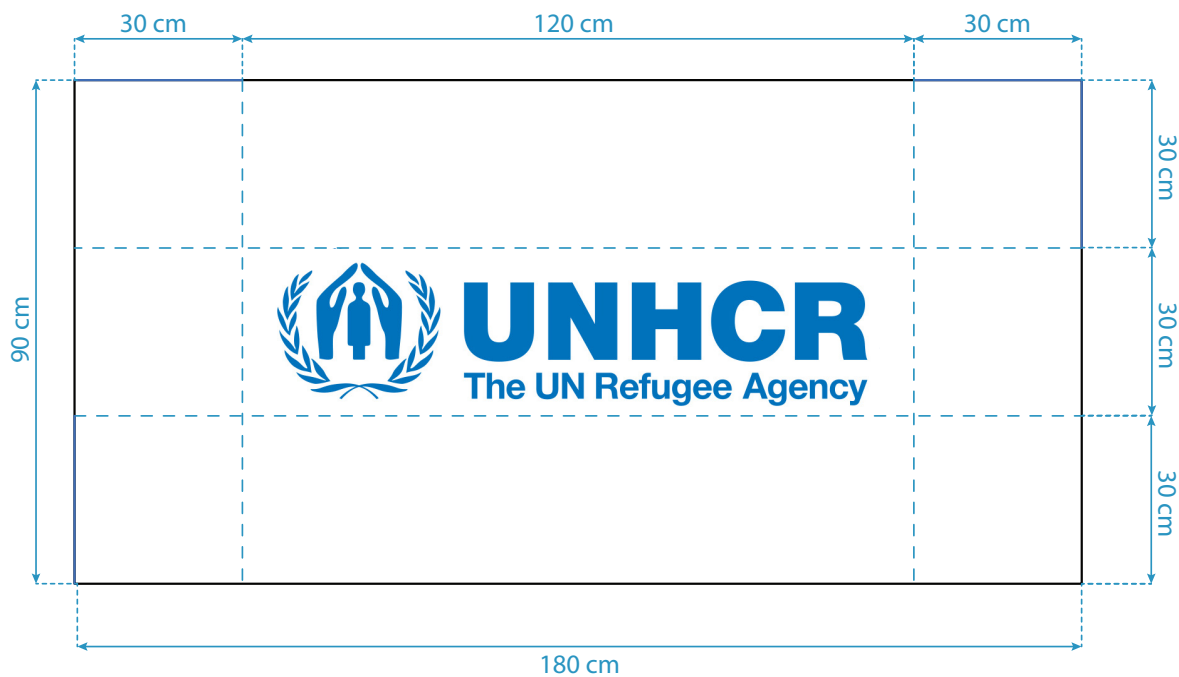
Colour: White or Blue, in contrast with the mat colour. (white mat - blue logo; blue mat - white logo).

Colour specification: Pantone Blue 300 or quadrichrome (CMYK).

C = 100 %, M = 45 %, Y = 0 %, K = 0 %

Font: Helvetica Bold

Graphic Reference



UNHCR Logo Application Reference

