

# LEBANON CRISIS **RESPONSE** PLAN 2015-16

YEAR TWO



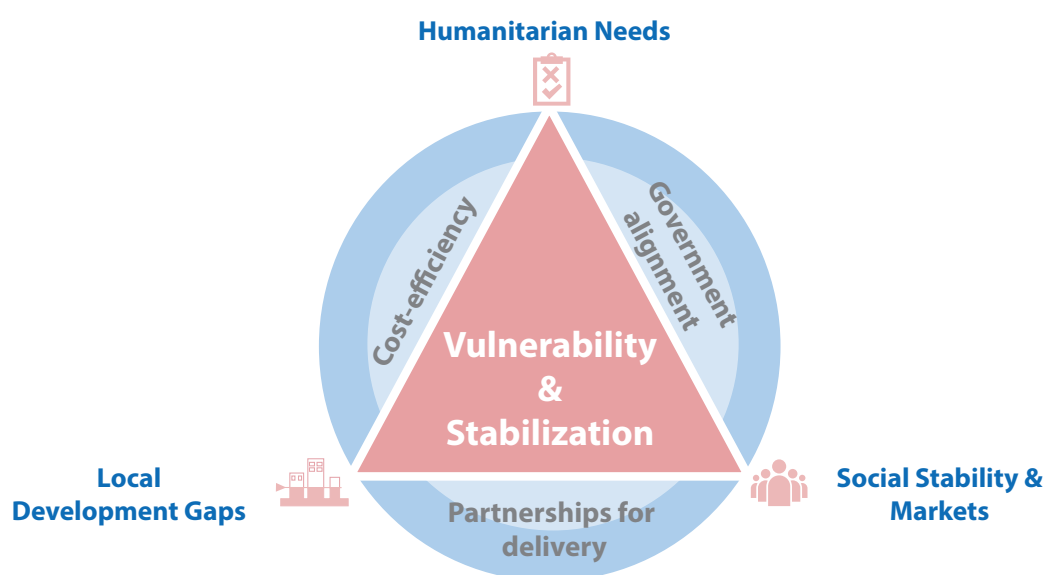


## Terminology in the LCRP

Lebanon considers that it is being subject to a situation of mass influx and reserves the right to take measures aligning with international law and practice in such situations. The Government of Lebanon refers to individuals who fled from Syria to Lebanon after March 2011 as "displaced". The United Nations characterizes the flight of civilians from Syria as a refugee movement, and considers that these Syrians are seeking international protection and are likely to meet the refugee definition. The Lebanon Crisis Response Plan uses the following terminologies to refer to persons who have fled from and cannot return to Syria:

1. "persons displaced from Syria" (which can, depending on context, include Palestine refugees from Syria and Lebanese Returnees as well as registered and unregistered Syrian nationals);
2. "displaced Syrians" (referring to Syrian nationals);
3. "persons registered as refugees by UNHCR".

## LCRP Conceptual Framework



## Partners involved in the LCRP

ABAAD, ACF, ACTED, ActionAid, ADRA, AMEL, AnaAqra, ANERA, AVSI, CARE, CCPJAPAN, CEVSI, CHF, CISP, CLMC, CONCERN, COOPI, DCA-Saida, Diakonia, Dorcas, DRC, FAO, ForumZFD, FPSC, GVC, HI, Himaya, Humedica, HWA, ICRC, ICU, IDRAAC, ILO, IMC, InternationalAlert, INTERSOS, IOCC, IOM, IRC, IRLebanon, IRW, JICA, Kvinna till Kvinna, LebRelief, LOST, MAG, Makassed, Makhzoumi, MAP-UK, MDM, MEDAIR, MedicalTeamsInternational, MEHE, MercyCorps, MercyUSA, MoA, MoEW, MoE, MoET, MoIM, MoPH, MoSA, MSD, NPA, NRC, OXFAM, PCPM, PU-AMI, QRC, RESTARTLebanon, RET, RI, SCI, SeraphimGlobal, SFCG, SHEILD, SIF, Solidarités, SolidarSuisse, Sombola, TdH-It, TdH-L, UNDP, UNFPA, UN-Habitat, UNHCR, UNICEF, UNIDO, UN-OCHA, UNOPS, UN-RCO, UNRWA, URDA, WFP, WHO, WRF, WVI, YMCA

Please note that appeals are revised regularly. The latest version of this document is available on <http://www.LCRP.gov.lb> and <http://data.unhcr.org/syrianrefugees/regional.php>. Financial tracking can be viewed from <http://fts.unocha.org>.

Cover Photo credit: UNDP /Rana Sweidan 2015

Produced by Government of Lebanon and the United Nations

15 December 2015.



# REFERENCE MAP



- ★ Capital
- Major Towns
- ..... Waterways
- ..... International Boundaries
- Governorate Boundaries
- Caza Boundaries

# TABLE OF CONTENTS

Preface.....	1
<b>EXECUTIVE SUMMARY</b> .....	2
Lebanon Crisis Response Plan (LCRP): An Integrated Humanitarian and Stabilization Strategy .....	4
LCRP Three Response Areas:.....	4
<b>INTRODUCTION</b> .....	8
I Evolution of Lebanon's context and funding trends .....	9
<b>NEEDS OVERVIEW</b> .....	12
II Defining Vulnerability 2015-2016.....	13
<b>RESPONSE STRATEGY</b> .....	18
III 2015 LEBANON CRISIS RESPONSE.....	19
<b>DELIVERING THE LCRP</b> .....	22
CORE PRINCIPLES AND COMMITMENTS .....	23
GOVERNANCE AND MANAGEMENT .....	24
IMPLEMENTATION FRAMEWORK OF THE LCRP .....	25
INTEGRATED RESPONSE MANAGEMENT .....	26
MONITORING AND EVALUATION FRAMEWORK .....	27
<b>SECTORS OVERVIEW</b> .....	30
<b>ANNEXES</b> .....	40
Annex 1: Lessons learned and best practices.....	41
Annex 2: Developing the LCRP.....	42
Annex 3: Commitments of the LCRP Response.....	43
Annex 4: Planning figures .....	44



# PREFACE

Five years into the Syria conflict, Lebanon continues to generously host 1.5 million Syrian displaced. The country has so far successfully navigated the tide in maintaining stability. This has been possible due to a shared culture of pluralism, openness and co-existence.

Lebanon has been persistently bearing the brunt of the Syria crisis with increasing economic, social, demographic, political, and security challenges. Nevertheless, Lebanese host communities continue to provide support and basic services, mainly health care, education, and shelter despite their own growing needs and deteriorating resources. Lebanese, Syrians and Palestinians continue to stand side by side and co-exist peacefully despite the numerous challenges.

We should avoid further deterioration of the humanitarian situation in Lebanon where the ability to manage the implications a protracted crisis, resulting in a population growth of more than 30% in less than 5 years, cannot be further tested. Conflict prevention in Lebanon is becoming more important than ever. No country in the world can be expected to manage such a crisis on its own. Lebanon and the Lebanese need continuous international support. Supporting Lebanon today is preventing a much more costly support programmes in the future.

The scale of the challenges the country is facing as a result of the 3.3 million people in need requires more than a traditional humanitarian intervention. What is needed is an agenda aiming at maintaining peace, security and stability at a time of high vulnerability and unprecedented threats. And although the overall security situation has improved in 2015, Lebanon was not completely immune against some major attacks, underlining the continuing volatile context.

The legendary ability of Lebanon to defy gravity should not become a reason to loosen our support with Syria's crisis. Feelings of uncertainty about the future are compounded by miserable conditions, giving rise to desperation. It is therefore no surprise to us that many people, are queuing in ports and airports to make their way to Europe. Yet, those fleeing are by far outnumbered by those who are staying, because they have no choice and no alternative.

The 2016 Lebanon Crisis Response Plan, as the 2015 chapter, brings together the Government of Lebanon (GoL) and national and international partners to deliver integrated and mutually reinforcing humanitarian and stabilization interventions. The 2016 plan proposes a US\$2.48 billion appeal plan to provide humanitarian assistance and protection to almost 2.8 million highly vulnerable individuals and invest in services, economies and institutions reaching the most vulnerable communities.

As we look ahead, the Government of Lebanon and the UN are working on developing a multi-year plan to address the stabilization challenges of the country, while taking into account key protection and humanitarian issues, livelihoods and countering threats to security.

It is only by working together that we will be able to ensure peace, security and stability for the whole of Lebanon, in an environment that promotes and protects rights for all. Our solidarity can make a difference, preserving dignity of those most in need and maintaining stability in Lebanon.

Rashid Derbas  
H.E Minister of Social Affairs

Philippe Lazzarini  
Resident and Humanitarian Coordinator



Photo by: UNDP

# Executive Summary

# EXECUTIVE SUMMARY

## KEY FIGURES

December 2016  
(projections)



**5.9 million**

Estimated population currently living in Lebanon



**3.3 million**

Estimated people in need



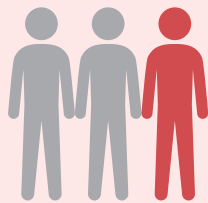
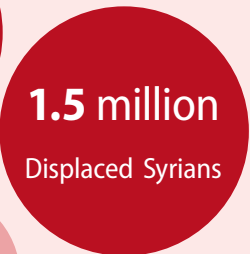
**2.1 million**

Targeted for service delivery, economic recovery and community services

**1.9 million**

Targeted for protection and direct assistance

### Key categories of vulnerable population:



**1 in 3 is displaced**  
from Syria or a Palestine refugee



**US\$ 2.48 billion**  
Funding required for the LCRP

**After five years of generously hosting families displaced by the Syrian crisis, Lebanon's government and communities continue to face critical tests of stability. At the same time, the most vulnerable Lebanese, displaced Syrians, and Palestine refugees are reaching the end of their coping capacities.**

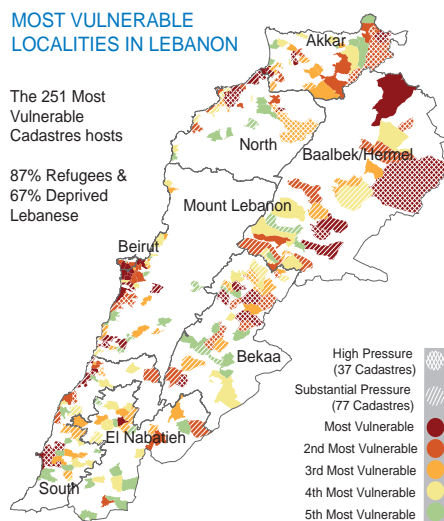
Although the number of persons displaced from Syria in Lebanon remained stable in 2015, individual, community and institutional vulnerabilities reached new heights, despite international contributions which met just half of the initially required funding<sup>1</sup>. Five years into the crisis, persons displaced from Syria and vulnerable Lebanese face considerable hardship, with fewer resources available and an increased reliance on humanitarian assistance. Negative coping strategies, such as withdrawing children from school, child labour and reduction of food intake, are on the rise. Without increased support or the ability to self-sustain, such coping strategies may become more pervasive and, in some cases, irreversible. Rising unemployment and declining income are increasingly reported<sup>2</sup>, in a context where displaced persons from Syria live side-by-side with the most vulnerable Lebanese<sup>3</sup>. In the country with one of the highest per capita ratios in the world of persons registered as refugees, public institutions and infrastructure are exceptionally overstressed, severely impacting access to and quality of basic services.

Despite its many challenges, Lebanon has remained resilient. Yet as 2015 ends, Lebanon's society faces a critical test. Public concern is growing around spillover of the conflict from Syria into Lebanon's stressed communities. Challenges are greatest in the most vulnerable and deprived parts of the country, which are also hosting the largest numbers of displaced persons from Syria. A reinforced, consolidated and tailored effort to tackle long-term inequities and development gaps in the context of an ongoing humanitarian crisis is essential to Lebanon's peace and stability.

### MOST VULNERABLE LOCALITIES IN LEBANON

The 251 Most Vulnerable Cadastres hosts

87% Refugees & 67% Deprived Lebanese



(1) Revised funding requirement as of July 2015 is \$ U.S 1.87 billion, against which 53% has been funded as of December 15

(2) OCHA, REACH and UNICEF, *Defining Community Vulnerability in Lebanon*, 2015.

(3) Data as of November 2015 suggests that a total of 1.5 million Lebanese live under poverty line (US\$ 3.84) [28.5 percent of Lebanese population + 170,000 & rising -World Bank estimate]. In an effort to identify the most vulnerable communities in Lebanon, GoL and international partners have jointly elaborated a vulnerability map which identifies the most vulnerable 251 cadastres, which include 67 percent of deprived Lebanese and host 87 percent of all displaced persons from Syria.





## Lebanon Crisis Response Plan (LCRP): An Integrated Humanitarian and Stabilization Strategy

2016 is the second year of the Lebanon Crisis Response Plan, and serves as a transitional phase into a longer term strategic framework for 2017-2020. As in the previous year, the Government of Lebanon (GoL) and national and international partners come together to deliver integrated and mutually reinforcing humanitarian and stabilization interventions.

The LCRP promotes the strategic priorities identified by GoL and partners (United Nations, national and international NGOs and donors), emphasizing the role of GoL in leading the response with the oversight of the cabinet's Crisis Cell. Interventions in the LCRP are aligned to national policies and strategies, and seek to complement and build on other international assistance in the country.

### The LCRP is designed to:

- 1) **Ensure humanitarian assistance and protection** for the most vulnerable among persons displaced from Syria and poorest Lebanese;
- 2) **Strengthen the capacity of national and local service delivery systems** to expand access to and quality of basic public services; and
- 3) **Reinforce Lebanon's economic, social, environmental, and institutional stability.**

### LCRP Three Response Areas:

The three Response Areas of the LCRP address urgent humanitarian needs for the most vulnerable populations in Lebanon, particularly displaced Syrians, as well as the coping capacity of all crisis-affected communities and certain deeper-rooted development gaps. Interventions are based on identified needs, capacity to implement and the potential to scale up for a positive impact on stabilization. The **Three Response Areas** of the LCRP are:

#### RESPONSE AREA 1. PROVIDE MATERIAL AND LEGAL ASSISTANCE TO THE MOST VULNERABLE AMONG THE DISPLACED FROM SYRIA AND POOREST LEBANESE

This response area addresses the increasing needs of the affected populations while limiting as much as possible the rapid deterioration of social and economic conditions based on economic, demographic and geographic sensitivities. It addresses the capacity of these communities to cope with the worst effects of poverty and displacement.

#### RESPONSE AREA 2: LINK VULNERABLE GROUPS AND LOCALITIES TO STRENGTHENED BASIC SERVICES AND PROTECTION

This response area will, in close coordination with line ministries, strengthen national and local capacity to meet increasingly overwhelming service-related needs and seek to reinforce confidence in the quality and accessibility of public services for vulnerable populations. It streamlines the number of direct-delivery emergency interventions compared to previous years, and expands community-level investments to reduce unsustainable and damaging coping strategies and improve municipal delivery. Where possible, this response area will foster a "convergence" approach to service expansion, whereby the social development services and municipalities are supported to ensure a minimum package of services in the most vulnerable areas. The response will also seek opportunities to collaborate more effectively with the private sector.

#### RESPONSE AREA 3: SUPPORT NATIONAL INSTITUTIONS TO PRESERVE SOCIAL STABILITY

This response area introduces rapid-impact job creation and income-generation opportunities for local economies, benefiting the most vulnerable communities in accordance with relevant Lebanese laws and regulations. Priority will be given to areas where poverty, unemployment and conflict risks are particularly high. Concurrently, it will support economic growth to foster partnerships stimulating the private sector, strengthen labour market governance, and support Lebanese businesses to improve their labour standards and build labour force skills. It will also invest in national and local capacity to promote dialogue that mitigates tensions, and cooperate with partners, including local authorities, community leaders, UN missions and human rights organizations. These investments will focus particularly on youth and adolescents. They will also integrate actions proposed in Lebanon's Environmental Management Plan as critical to reducing the growing pressures on Lebanon's urban and rural areas.

**\$2.48 billion funding required**



35% for stabilization programs

65% for humanitarian programs





**95**

Appealing Partners

#### Protection & direct assistance

-  1.5 million displaced Syrians
-  300,000 vulnerable Lebanese
-  42,189 Palestine refugees from Syria
-  75,000 Palestine refugees in Lebanon

#### Service delivery, economic recovery & social stability

-  840,000 displaced Syrians
-  1.2 million vulnerable Lebanese
-  42,189 Palestine refugees from Syria
-  20,000 Palestine refugees in Lebanon

**Strategic Priority One: ensure humanitarian assistance and protection for the most vulnerable among the displaced from Syria and poorest Lebanese.**

It aims to:

- i. Supplement the ability of the most vulnerable Lebanese and persons displaced from Syria to meet their survival needs through protection and humanitarian assistance, reducing exposure to homelessness, hunger and the worst effects of poverty;
- ii. Continue to facilitate voluntary access to civil documentation for persons displaced from Syria as per Lebanese laws, regulations and policies;
- iii. Continue to respond to emergency humanitarian needs as they arise;
- iv. Channel support to persons displaced from Syria through public institutions wherever possible, ensuring that humanitarian assistance continues to strengthen national capacities and benefit all vulnerable populations;
- v. Strengthen GoL management of the response, including through enhancing border systems and further strengthening the capacities of implicated national institutions;
- vi. Build capacities of Lebanese civil society and community-based organizations in their work on behalf of displaced Syrians and other vulnerable populations.

*Key sectoral responses include Basic Assistance, Food Security, Shelter and Protection.*

**Strategic Priority Two: strengthen the capacity of national and local delivery systems to expand access to and quality of basic public services.**

It aims to:

- i. Ensure vulnerable children can access and learn in a quality learning environment, including by strengthening the absorption capacity of formal and non-formal education and increasing geographic coverage;
- ii. Ensure that the most vulnerable Lebanese and displaced Syrians can access affordable healthcare, with a focus on accessibility and quality of services and controlling disease outbreaks;
- iii. Increase outreach to and responsiveness of community and institutional systems to protect the most vulnerable, especially children and women at risk of violence (including armed violence, abuse, exploitation and neglect) and to provide referrals and a full package of services, while providing appropriate support to survivors through a robust and coordinated national system;
- iv. Expand energy, safe water, sanitation and hygiene for the most vulnerable Lebanese and displaced Syrians through emergency gap-filling and by reinforcing existing services.

*Key sectoral responses include Education, Health, Energy & Water, Social Stability and Protection.*

**Strategic Priority Three: reinforce Lebanon's economic, social, institutional and environmental stability by (i) expanding economic and livelihood opportunities benefiting local economies and the most vulnerable communities: (ii) promoting confidence-building measures within and across institutions and communities to strengthen Lebanon's capacities:**

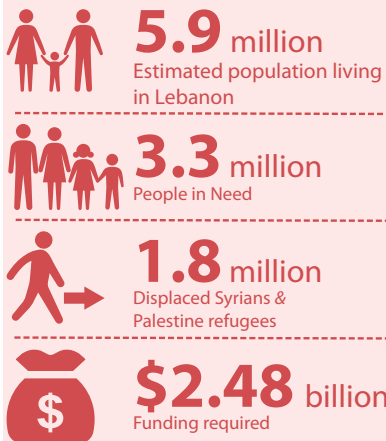
It aims to:

- i. Create jobs and support businesses to generate income for local economies in poor areas benefiting vulnerable communities, in accordance with relevant Lebanese laws and regulations;
- ii. Enhance the productive capacities of micro and small to medium enterprises (MSME) through improving local economic infrastructure and supporting their capability to respond to market demands;
- iii. Support government institutions and government partners to implement necessary economic, labour, social welfare, service delivery, disaster risk management and environmental protection reforms already initiated;
- iv. Reduce the impact of the crisis on Lebanon's environment and promote environmental recovery;
- v. Strengthen government ownership of investments made in stabilization by supporting national planning and implementing, monitoring and aid management processes;
- vi. Address the risks faced by Lebanese, displaced Syrians and Palestinian adolescents and youth with a particular focus on empowering young women and girls;
- vii. Prevent social tensions within stressed communities by strengthening government, municipal, community and individuals' capacities to promote intra- and inter-community dialogue.

*Key sectoral responses include Shelter, Food Security, Energy & Water, Livelihoods and Social Stability.*

# LEBANON CRISIS RESPONSE PLAN AT A GLANCE

## 2016 PLANNING FIGURES



## PRIORITY NEEDS

- Over 1.07 million Syrians are registered as refugees with UNHCR in Lebanon at end-2015 with many more present but unregistered. Of these, 52% are unable to meet their survival needs and an estimated two third lack legal stay documentation, limiting their capacity to sustain their own well-being. Equally, 10% of the Lebanese population and 68% of Palestine refugees live under Lebanon's lowest poverty line of \$2.4 per day.
- Approximately two million vulnerable people are essentially concentrated in 251 localities where social tensions and

poverty are worsening fast. In these areas, demand for basic services continues to far outstrip the capacity of institutions and infrastructure to meet needs.

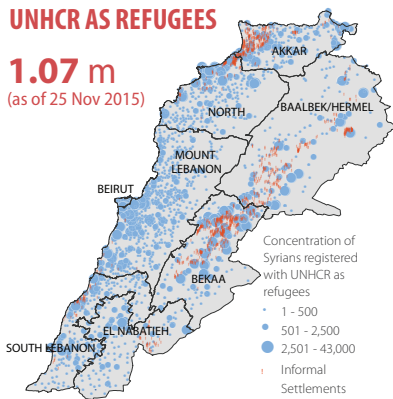
3. Extreme poverty, rising unemployment and desperation are driving negative coping strategies, particularly affecting youth. Long-standing economic inequalities are becoming more widespread and environmental pressures are increasing, affecting social relationships and, ultimately, Lebanon's stability.

## STRATEGIC OBJECTIVES

- Ensure humanitarian assistance and protection for the most vulnerable among the displaced from Syria and poorest Lebanese.
- Strengthen the capacity of national and local delivery systems to expand access to and quality of basic public services.
- Reinforce Lebanon's economic, social, institutional and environmental stability including:
  - expand economic and livelihood opportunities benefiting local economies and the most vulnerable communities.
  - promote confidence-building measures within and across institutions and communities to strengthen Lebanon's capacities.

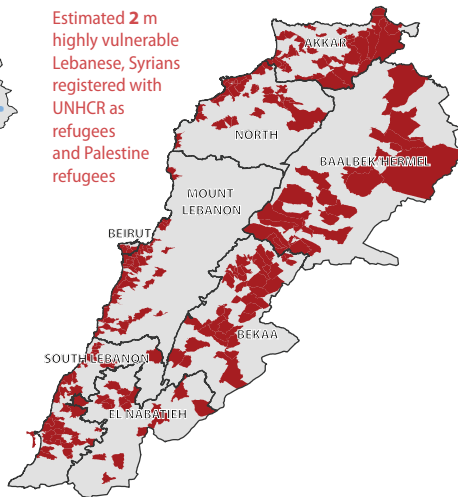
## SYRIANS REGISTERED WITH UNHCR AS REFUGEES

**1.07 m**  
(as of 25 Nov 2015)

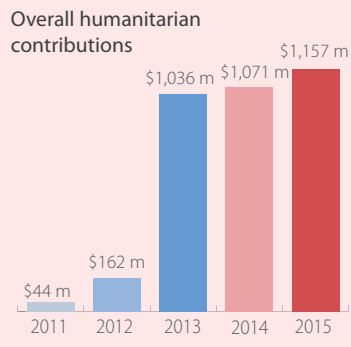


## MOST VULNERABLE CADASTERS

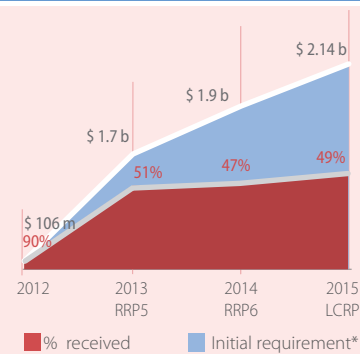
Estimated 2 m highly vulnerable Lebanese, Syrians registered with UNHCR as refugees and Palestine refugees



## DONOR CONTRIBUTION



## FUNDING TREND



## 2016 FUNDING REQUIREMENTS in million \$

Sector	Requirement
Food Security	\$473.5
Energy & Water	\$391.3
Education	\$388.2
Basic Assistance	\$356.6
Health	\$290.9
Livelihoods	\$143.3
Shelter	\$138.7
Social Stability	\$119.4
Protection	\$98.5
Child Protection	\$48.1
SGBV	\$31.7

## 2016 PROJECTED TARGET POPULATION

Sector	Target population
Food Security	1,109,832
Energy & Water	2,022,000
Education	529,933
Basic Assistance	915,090
Health	1,602,000
Livelihoods	134,607
Shelter	817,946
Social Stability	251*
Protection	1,862,189**

\* Social Stability targeting communities in the 251 most vulnerable cadasters.

\*\* Child Protection and SGBV target population figures are included.

# KEY STATISTICS



**221,221**

Displaced Syrian children between 6 & 14 yrs. old are **out of school** compared to 155,095 enrolled in public schools as of 1<sup>st</sup> Dec.



**89%**

of Displaced Syrian households have a

**debt**  
average of  
**\$842**



**1,903**

**Informal Settlements**  
across the country



**52%** of displaced Syrians and **10%** of all Lebanese are **extremely poor** (less than **\$2.4/day**)



**40% increase** in Municipal spending on **waste disposal** since 2011

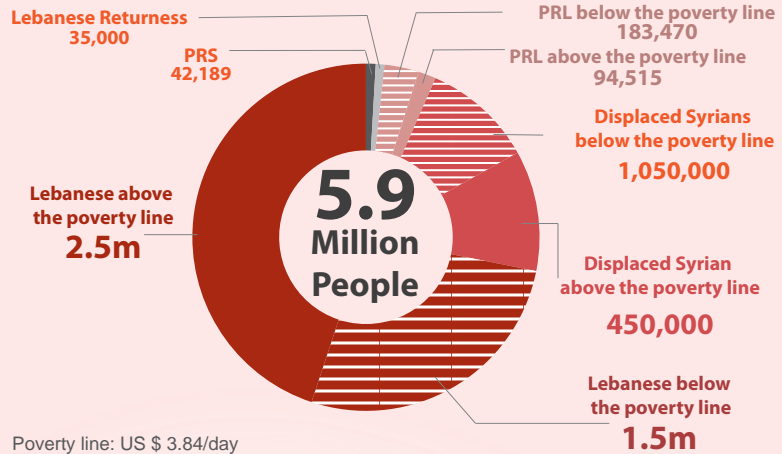


More than **300,000 PRL & PRS** live in **42 informal** Palestine **gatherings** and **12 formal** Palestine **refugee camps**.



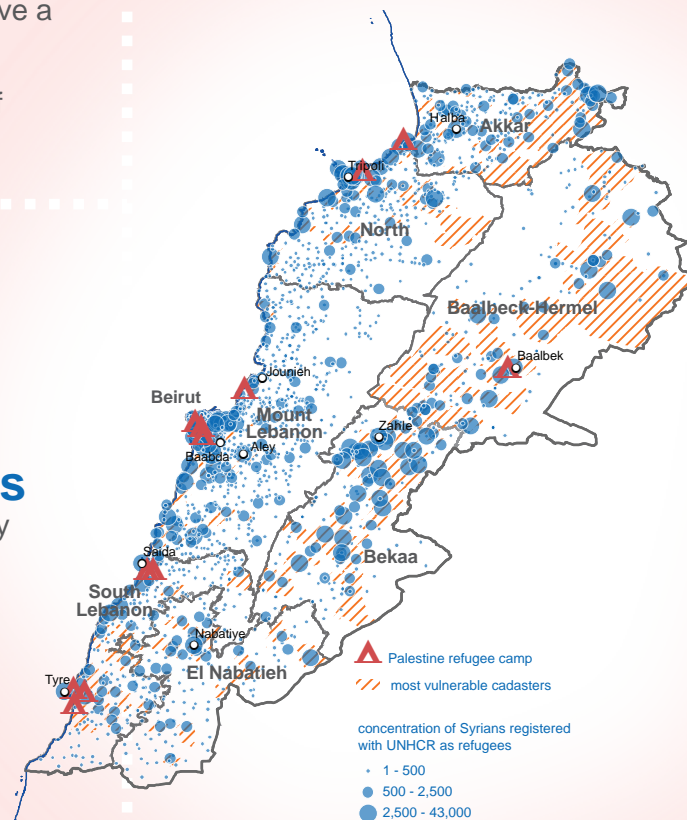
Water demand increased by **28%** since 2011

## Projected Figures December 2016



Poverty line: US \$ 3.84/day

## Concentration of people in need



Source: OCHA, UNHCR, UNRWA



**50%**  
larger

**labour force**  
than 2011



**110%**  
more

**POOR**  
in Lebanon;  
**15%**  
more  
**POOR**  
Lebanese  
since 2011



Photo by: AFDgroup

# Introduction

Learning from a  
fifth year  
of crisis

# I EVOLUTION OF LEBANON'S CONTEXT AND FUNDING TRENDS

As of 31 October 2015, Government of Lebanon (GoL) estimates that the country hosts 1.5 million Syrians who have fled the conflict in Syria (including 1.07 million registered as refugees with UNHCR), in addition to some 42,000 Palestine Refugees from Syria (PRS), 35,000 Lebanese returnees, and a pre-existing population of more than 270,000 Palestine Refugees in Lebanon (PRL)<sup>4</sup>. The number of people in-country has risen by 37 percent since the crisis began. Today, nearly one in every three people in Lebanon is a person displaced from Syria or a Palestine refugee. Given the mass influx of Syrian nationals displaced into Lebanon, GoL acknowledges that even a substantial increase in resettlement and humanitarian admission opportunities constitutes a partial solution to the crisis. Bearing in mind that settlement/integration of non-Lebanese in Lebanon is prohibited by the Lebanese constitution, GoL's position is that a safe repatriation of displaced Syrians, beyond those who would have been resettled abroad, while abiding by the principle of non-refoulement, is the only durable solution for this crisis, and that conditions for such a safe repatriation can precede a political solution for the conflict in Syria<sup>5</sup>.

Based on this premise, and given the combined economic, demographic and security challenges facing Lebanon as a result of the crisis in Syria, GoL adopted in October 2014 a policy paper on Syrian displacement in Lebanon. This paper entered into force in January 2015, and measures in line with the policy have gradually been put into place. For Syrians seeking asylum, admission is only granted under exceptional humanitarian cases determined by the MoSA. The GoL policy also encourages third countries to offer more opportunities for resettlements and humanitarian admission for Syrian nationals. The need for such solutions and that of a political solution to the conflict inside Syria is becoming all the more imperative with the rising trend in 2015 of an increasing number of Syrians moving to join the route to Europe.

## UN Durable solutions

In any refugee situation, the ultimate goal for the United Nations is the realization of durable solutions to the plight of refugees. Durable solutions include voluntary repatriation in safety and dignity to the country of origin when conditions allow, local integration in the host country where possible, or resettlement to a third country.

Despite the hospitality of Lebanese communities, donor contributions and efforts by response partners since 2011, the impact of the crisis on institutions, communities and vulnerable individuals is deepening. Asset depletion and overstressed service infrastructure, limit the availability of

resources for managing the increasing needs. Issues related to valid residency for persons displaced from Syria, reductions in assistance, and few meaningful self-support opportunities further increase the vulnerability of the populations in need.

Nearly half of those affected by the crisis are children and adolescents; at least 1.4 million children (age 0 to 17 years) – both vulnerable Lebanese, persons displaced from Syria and Palestine refugees are currently growing up at risk, deprived, and with acute needs for basic services and protection. One-third of Lebanese youth are unemployed, in a labour force estimated to be 50 percent larger than pre-crisis<sup>6</sup>. Even low-wage jobs are becoming harder to find, particularly as the pace of economic growth is slowing. The IMF estimates Lebanon's GDP growth to be 2 percent in 2015, whereas the Lebanon Central Bank expects zero growth. Both estimates are far below the average of 9 percent growth experienced during the four years prior to 2011<sup>7</sup>.

**Youth at risk:** Lebanon depends on a strategic response to protect vulnerable young people from being victims of armed violence resulting from the Syria crisis, while preserving their human potential. The 2014 UN/Save the Children Situation Analysis of Youth\* showed a strong correlation between conflict, unemployment and poverty among this population. To date, the support provided for the benefit of adolescents and youth aged 14 to 25 has not been substantial nor comprehensive, implemented through scattered activities under the Livelihood, Education, Health and Protection sectors. In that respect, the LCRP tackles youth and adolescent risk dynamics from several perspectives: through expanding formal and non-formal education programmes, skill-building, income generation with a focus on young men in suburban areas, psychosocial support for those in need, building community referral and response mechanisms for at-risk girls and boys, and engaging young women and men in neighbourhood development and peace-building activities. A substantial part of the rapid-impact job creation programme proposed under the LCRP targets youth, responding to the disproportionately high youth unemployment. LCRP analytical platforms will also prioritize building adolescent and youth-focused monitoring and analysis tools, drawing essential baseline information from existing interagency studies. This could potentially inform a more comprehensive youth initiative for Lebanon.

\*Source: UNICEF, UNFPA, UNESCO, UNHCR and SCI, *Situation analysis of youth in light of the Syrian crisis*, 2014.

(4) UNRWA and AUB, *Socio-Economic Survey of Palestine Refugees in Lebanon*, December 2010.

(5) The GoL reserves the right to safeguard its national security through measures it deems appropriate and that respect Lebanese and international law.

(6) *IMF Country Report No. 14/238*, Lebanon: Selected Issues, July 2014. Available from <https://www.imf.org/external/pubs/ft/scr/2014/cr14238.pdf>

(7) World Bank: Lebanon GDP growth was 9.4, 9.1, 10.3, and 8 percent respectively for 2007, 2008, 2009 and 2010.

Despite around US\$ 1 billion in contributions, the LCRP in 2015 was less than 50 percent funded<sup>8</sup>. Assistance from international donors to Lebanon's communities and institutions broadened in 2015, complementing the humanitarian efforts. These interventions were primarily channeled through GoL programmes, including the MoSA-led Lebanon Host Community Support Program (LHSP) and the MEHE-led Reach All Children with Education (RACE) strategy, and focused on localities facing the greatest increases in population, pressure on public systems and poverty as a result of the crisis. Humanitarian assistance continued to be provided to displaced Syrians, vulnerable Lebanese, Lebanese returnees, Palestine Refugees from Syria (PRS) and Palestine Refugees in Lebanon (PRL). However, due to the funding gap, partners were increasingly forced to assist only those individuals and families with the highest degree of vulnerability within the vulnerable target population, leaving many essential needs unmet.

Bilateral contributions continued to represent the largest avenue for support, channeled through UN agencies and NGOs working in close partnership with GoL. Several funding instruments supported the response, including

the Humanitarian Pooled Fund-Lebanon<sup>9</sup> administered by OCHA, the Multi-Donor Trust Fund (MDTF) administered by the World Bank and the Lebanon Recovery Fund (LRF) administered by the UN, although with low capitalization. Lebanon's status as Middle Income Country (MIC) has been a significant factor in limiting access to development financing. However, given the exceptional challenges posed by the protracted nature of this crisis, the need to expand and diversify funding sources has become critical. In this regard, a series of key priorities have been identified:

- **Ensuring timeliness, predictability and sustainability of humanitarian funding to address deepening vulnerabilities;**
- **Maximizing longer term solutions through predictable, multi-year stabilization funding;**
- **Strengthening convergence in aid management and coordination between GoL and international partners, including donors from the MENA region.**

(8) Against initial funding requirement of \$ U.S 2.14 billion; source: OCHA Financial Tracking System, [fts.unocha.org](https://fts.unocha.org)

(9) Previously entitled the Emergency Response Fund-Lebanon



Photo: UNHCR







Photo by: UNHCR/A. McConnell/11.22

# Needs Overview

## II Defining Vulnerability

### 2.1 Growing Vulnerability

The number of poor Lebanese, displaced people and pre-crisis refugees living inside Lebanon has risen by an estimated 110 percent since 2011, to 2.7 million<sup>10</sup>. For most, their vulnerability has been increasing, as savings are rapidly depleting and use of negative coping strategies is on the rise. Entrenched dependency on external assistance is a growing risk. The most urgent concern is for the 52 percent of displaced Syrians who are unable to meet their minimum survival requirements (less than US\$ 2.4 per day), which constitutes more than 780,000 people estimated by the end of 2015<sup>11</sup>. 70 percent of displaced Syrians are now below the poverty line (US\$ 3.84 per day), compared to 48 percent in 2014. As for the Lebanese, approximately 404,000 live below the extreme poverty line (US\$ 2.4 per day)<sup>12</sup>.

#### Increased Vulnerability of Displaced Syrians

- 70% of households are **below** the poverty line (US\$ 3.84/person/day), up from 50% in 2014.
- 52% of households are below the survival expenditure basket (US\$87 per capita/month), up from 26% in 2014.
- 61% of households are applying emergency and crisis coping strategies, up from 28% in 2014.
- 89% of households reported experiencing lack of food or money to buy food in the last 30 days, as compared to 75% in 2014.
- Average monthly expenditure per person decreased from US\$138 per month in 2014 to US\$107 per month in 2015.
- Non-agricultural casual labour is down from 29% to 15% as the main livelihood source.
- Food vouchers are the main livelihood source for 54% of the population, up from 40% in 2014.
- 88% applied a food-related coping strategy (including eating less preferred food).
- 55% of households reduced non-food expenditure (compared to 20% in 2014).
- 19% of households withdrew children from school (compared to 10% in 2014 and 2013).
- Food security decreased – 11% of households are food secure in 2015 (compared to 25% in 2014 and 32% in 2013).
- Moderate food insecurity increased to 23% of households, up from 12% in 2014 and 2013

In a country where basic living costs are high, the extreme poor are more vulnerable to homelessness, illness, unsanitary

(10) Data as of November 2015 suggests a total of 1,500,000 Lebanese living under poverty line (US\$3.84/day), 1,050,000 Syrians living under Minimum Expenditure Level (US\$3.80/day) (70% of 1.5 million displaced Syrians – VASyR 2015), 183,470 Palestine Refugees from Lebanon (PRL) living under the poverty line (66% of caseload – AUB data) and 38,606 Palestine Refugees from Syria (PRS) (89% of caseload – AUB data). Pre-crisis total poor population in-country was estimated at 1.32 million Lebanese and Palestine refugees in Lebanon. Pre-crisis poverty is calculated as follows: UNDP 2008 found 28.5 percent of Lebanese (1.14 million people) to be living below the poverty line (US\$3.84 per day). This data is based on the ten year-old National Survey of Household Living Conditions (Ministry of Social Affairs, 2004) and should therefore be considered an estimate. The 2010 Socio-Economic Survey of Palestine Refugees in Lebanon, by UNRWA-American University of Beirut assesses that 66 percent or 180,000 of PRL are considered poor. The sum of all these poor groups in Lebanon is an estimated 2.7 million people as of November 2015, approximately 110% higher than 2011 estimates.

(11) WFP, UNHCR and UNICEF, *Vulnerability Assessment of Syrian Refugees in Lebanon* (VASyR), 2015.

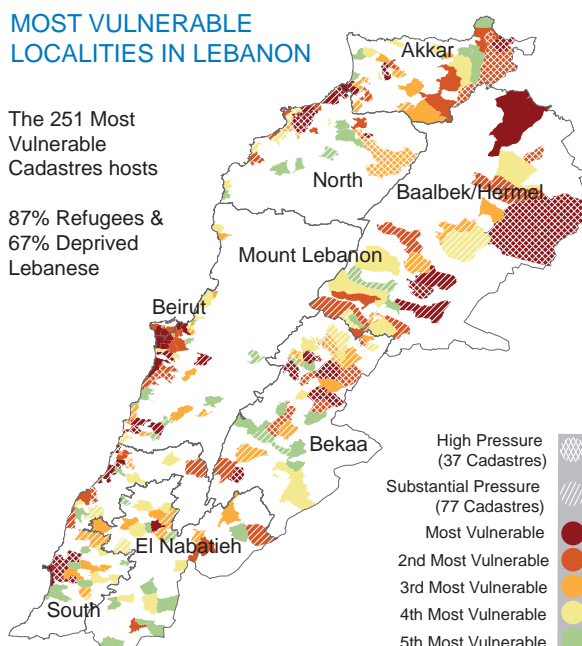
(12) National Poverty Targeting Program (NPTP).

conditions and negative coping strategies. Displaced populations residing in the same geographical areas that suffered from pre-crisis gaps in public services and markets, have increased demographic pressure and competition over low quality jobs, particularly in the informal sector which nationally represents more than 56 percent of total employment<sup>13</sup>. The unemployment rate among Palestine Refugees in Lebanon (PRL) reached a historical peak of 23 percent in 2015<sup>14</sup>, and a staggering 53 percent among Palestine Refugees from Syria (PRS). 95 percent of PRS depend on humanitarian assistance for subsistence<sup>15</sup>.

#### MOST VULNERABLE LOCALITIES IN LEBANON

The 251 Most Vulnerable Cadastres hosts

87% Refugees & 67% Deprived Lebanese



In Lebanon's relatively high-cost environment and with limited access to alternative financial resources, many working in low-wage jobs remain poor. Lebanese households face a decrease in income and an increase in debts to be able to meet basic needs, including food or healthcare<sup>16</sup>. Syrian households also face increased reliance on loans, credit and food vouchers compared to 2014. Nationally, displaced Syrian household dependency on food vouchers as the primary livelihood source increased to 54 percent in 2015 as compared to 41 percent in 2014 (peaking at 74 percent in the West Bekaa district), paralleled with four out of five PRS families relying on UNRWA assistance as the primary source. 89 percent of displaced families are relying on informal and formal loans among their three top livelihood sources.

(13) *Micro-Determinants of Informal Employment in the Middle East and North Africa Region*, World Bank, 2012.

(14) UNRWA and AUB, *Socio Economic Survey of Palestine Refugees in Lebanon (Preliminary Findings)*, 2015.

(15) UNRWA and AUB, *Profiling the Vulnerability of Palestine Refugees from Syria Living in Lebanon*, 2015.

(16) FAO and REACH, *Food Security and Livelihoods Assessment of Lebanese Host Communities*, June 2015.



The food security situation has also worsened significantly over the past year. Only 11 percent of displaced Syrian households are food secure, and moderate food insecurity has doubled affecting a quarter of households<sup>17</sup>. According to a previous survey, over 50 percent of poor Lebanese households in Bekaa rely on debt to purchase food<sup>18</sup>. 94.5 percent of PRS are food insecure<sup>19</sup>.

Issues related to valid residency further compound vulnerability. Based on a total of 75,000 household visits of displaced Syrians conducted on a monthly basis since January 2015, 61 percent of those visited in July 2015 reported no valid residency, compared to 9 percent of households visited in January 2015<sup>20</sup>. In addition, dwindling assistance and limited opportunities for self-support, along with distance and cost, can further affect access to basic services like education and health, thereby increasing distress on both caregivers and children<sup>21</sup>.

### Conditions for Palestine Refugees

For Palestine Refugees in Lebanon (PRL), the Syrian crisis compounds the hardships of prolonged refugee status and disadvantage, with the vulnerabilities of both displaced and hosting communities. Palestine Refugees from Syria (PRS) who have fled to Lebanon fall under the mandate of UNRWA, which is the main provider of assistance to both PRS and PRL, in partnership with other UN agencies and the international development community. Most Palestine refugees depend on UNRWA's services as they are unable to access the public systems in Lebanon.

The number of beneficiaries UNRWA regularly serves in Lebanon has grown by almost 20 percent due to the prolonged crisis in Syria, and they continue to need support. Displaced PRS – some 42,000 – have arrived into this environment, facing many of the same difficulties as Syrian refugees. Since August 2013, their entry into Lebanon has been limited to exceptional cases. The percentage of socioeconomically vulnerable has increased. 99 per cent of PRS are poor, compared to 66 per cent of PRL, and one in ten lives in extreme poverty, with youth disproportionately affected. Conditions have deteriorated among PRS over the past 12 months, with 94.5 per cent of the population assessed to be food insecure, up from 90 per cent in 2014.\* Even with cash assistance, most families do not have enough money to meet their basic food needs. Refugees are using negative coping mechanisms, including increased indebtedness.\*\*

Palestine Refugees in Lebanon (PRL) are an already vulnerable category, facing additional pressure and competition from PRS inside overcrowded camps and a general strain on camp infrastructure. The traditional social network in camps has been significantly challenged by the influx of refugees, and there has been an increase in internal tensions.

\* UNRWA and AUB, *Socio-Economic Survey of Palestine refugees in Lebanon, Preliminary findings*, 2015.

\*\* UNRWA, *Post Distribution Monitoring Survey*, August 2015.

(17) Considering the representativeness of the VASyR household sample, WFP applied the food assistance vulnerability formula to determine the percentage of households falling under each vulnerability category.

(18) GoL and UN, *Lebanon Millennium Development Goals Report*, 2013.

(19) UNRWA and AUB, *Socio Economic Survey of Palestine Refugees in Lebanon (Preliminary Findings)*, 2015.

(20) Data Analysis of Household Visits conducted by the Basic Assistance sector from January - July 2015.

(21) Université Saint-Joseph (USJ), *Survey on Perceptions of Syrian Refugees in Lebanon, 2015*. Available from <http://www.isp.usj.edu.lb/pdf/Powerpoint%20En%20Final.pdf>

## 2.2 Gaps in Essential Services

Tensions and lack of access to essential services are intensifying fastest in areas of Lebanon where large numbers of displaced Syrians coincide with a pre-crisis history of weak service delivery for the local population, making these areas the highest priority for support.

A quarter of Lebanese have never received piped water from public networks<sup>22</sup>, a situation now compounded by the mass influx of persons displaced from Syria; a third of displaced Syrians are estimated to lack access to safe water. Based on the National Water Sector Strategy, out of a total demand of 1,500 million cubic meters (MCM), available public resources capacity is 900 MCM, leading to a 40 percent deficit in supply. The impact of the Syrian crisis aggravates the situation, resulting in higher deficits and less hours of water supply. Wastewater and the pollution load from wastewater discharges have also increased since 2011 (national wastewater generation increased between 8 and 14 percent as a direct result of the population increase)<sup>23</sup>, challenging a system that only treats 8 percent of its sewage<sup>24</sup>. Similarly, increased electricity demand due to the incoming displaced population was estimated at 213 megawatts (MW) by end-2013 and up to 362 MW by end-2014<sup>25</sup>.

Education is another area where supply is not meeting demand. The majority of school-aged Lebanese children are educated in private schools, with only 30 percent of Lebanese children enrolled in public education (a group that tends to be more economically vulnerable than those enrolled in semi-private or private primary schools). All children in Lebanon between the ages 3 and 18 have a right to and are eligible to access education, irrespective of their status. The RACE plan commits government and partners to providing 470,000 school-aged displaced Syrian and poor Lebanese children with access to quality learning opportunities in safe and protective environments by 2016. Of this total, 200,000 Syrian children will be enrolled in formal education (as of December 2015, 157,000 have been enrolled for the 2015-16 academic year). However, despite major efforts by the Ministry of Education and Higher Education (MEHE) and partners to provide education opportunities, 58 percent or more than 220,000 displaced Syrian children between 6 and 14 years old, remain out of school. Several barriers have been identified which prevent the access and retention of children in public schools, including cost of transportation, parental security concerns, the need for children to work to support the family, insufficient basic literacy in English or French, psychosocial welfare of children, and early marriages for girls.

At the end of 2015, 41 percent of the displaced population is projected to live in substandard shelter conditions

(22) MoEW, *National Water Sector Strategy*, 2012.

(23) MoE, EU and UNDP, *Lebanon Environmental Assessment of the Syrian Conflict and Priority Interventions*, 2014.

(24) MoEW, *National Water Sector Strategy*, 2012. Available from <http://www.databank.com.lb/docs/National%20Water%20Sector%20Strategy%202010-2020.pdf>

(25) World Bank, *Lebanon Economic and Social Impact Assessment of the Syrian Conflict*, September 2013.

such as in informal settlements<sup>26</sup>, in unfinished structures or in inadequate shelters lacking basic services and not properly equipped for adverse weather conditions<sup>27</sup>. In addition, increasing numbers of families are squeezed into overcrowded apartments<sup>28</sup> with approximately 4 percent of the households currently at risk of eviction. Overall, 54 percent<sup>29</sup> of displaced Syrians are in need of support with regards to shelter conditions that meet the minimum standard and to rental-related tenure security<sup>30</sup>.

#### Increased Pressure on Basic Services

- GDP growth decreased from 8% in 2010 to an average of less than 2% over the last four years;
- Since 2011, overall poverty of Lebanese has increased from 28% to 32%;
- Youth unemployment has increased by 50% in since 2011;
- Water network coverage reduced from 80% pre-crisis to 48% in 2015 due to power shortages and non-revenue water;
- Water demand has increased by 28% in since 2011;
- Wastewater generation and pollution have increased between 8 and 14% since 2011, challenging a system that treats only 8 percent of its sewage;
- Municipal spending on waste disposal increased by 40% between 2012 and 2013;
- US\$18 million of due bills for the hospitalization of displaced Syrians are uncovered (from the unsubsidized 25% of hospitalization bills);
- Additional cost of electricity usage by displaced persons from Syria between 2012 and 2014 is estimated at US\$500-580 million.

Source: World Bank, *Lebanon Central Bank, IMF, ILO, UNDP and line ministries, National Water Sector Strategy*

Hospitals and health centers across Lebanon are overwhelmed by the increase in the population caused by the mass influx of displaced Syrians. Public hospitals suffer the most from underfunding caused by the Syrians' inability to afford healthcare, even in cases where their hospitalization is subsidized at 75 percent. Displaced Syrian households spend an average of 18 percent of financial resources on health<sup>31</sup>, and 27 percent of households count at least one member with a specific need (chronic disease, permanent disability, temporary disability or another issue)<sup>32</sup>. 70 percent of displaced households report a child needing care. Similarly, PRS are particularly vulnerable when it comes to access to health, with 99 percent of the PRS population lacking health insurance coverage and dependent on UNRWA for health

(26) 'Informal Settlements' in this context refers to the settlements informally established by displaced Syrians on mostly agricultural lands consisting of tents, makeshift shelters, etc. It does not refer to poor urban neighborhoods or other unregulated settlements or structures built on occupied land, e.g. some Palestinian gatherings.

(27) The UNHCR 2015 shelter survey indicates that most displaced Syrians living in informal settlements are located in Bekaa (65%), North Lebanon and Akkar (30%), while most of those living in substandard structures are located in urban and semi-urban areas along the coast.

(28) In reference to the regular UNHCR Shelter Surveys, the amount of displaced Syrians living in overcrowded apartments increased from 3.5 percent in 2014 to 9.1 percent in 2015.

(29) Reference is made to the 2015 shelter sector survey and the inter-agency household questionnaire.

(30) Correlated findings from both the 2015 shelter sector survey and the inter-agency household questionnaire.

(31) Johns Hopkins and others, *Syrian refugee and affected host population health access survey in Lebanon*, 2015.

(32) VASyR 2015

services including hospitalization<sup>33</sup>. Nearly half (47.5 percent) of PRS households have at least one member suffering from a chronic condition. 66 percent of PRS had an acute illness in the last six months<sup>34</sup>.

### 2.3 Economic, Social, Environmental and Institutional Fragility

The dramatic increase in the number of poor is reshaping Lebanon's fluid socioeconomic dynamics in profound ways. Prior to 2011, 28 percent of the Lebanese population was living under the poverty line of US\$3.84/day and 8 percent under the extreme poverty line of US\$2.4/day<sup>35</sup>. Since 2011, overall poverty of Lebanese has increased from 28 percent to 32 percent<sup>36</sup>. Long-standing economic inequalities are becoming deeper and more widespread, affecting social relationships and wellbeing, and ultimately threatening the country's stability.

In the current circumstances, economic growth is especially critical to Lebanon's stability, equally important as the security and political dimensions. The crisis has negatively affected key growth drivers such as construction, tourism and the service sector<sup>37</sup>. The overall volume of exports has been impacted by the deterioration of Lebanon's only land export route which crosses Syria. Transportation and insurance costs have increased while alternative options by air or sea remain much more expensive<sup>38</sup>. The country's fiscal balance has deteriorated significantly in the last three years, with debt swelling from 130 percent to about 143 percent of GDP, and expected to increase again in 2015 by about US\$4 billion<sup>39</sup>. Small and medium enterprises, although critical job creators, are still largely unsupported, with local economies heavily dependent on remittances (19.5 percent of GDP or US\$8.89 billion in 2014)<sup>40</sup>.

Public institutions, at both the central and local levels<sup>41</sup>, continue to face increased pressure. As first line responders, public institutions at the local level need to be supported to ensure service delivery systems do not collapse. Crisis management and contingency planning is a continued key priority, both nationally and at governorate level, in areas prone to risks and disasters.

The Environmental Assessment of the Syrian Conflict report

(33) UNRWA and AUB, *Socio Economic Survey of Palestine Refugees in Lebanon (Preliminary Findings)*, 2015.

(34) UNRWA and AUB, *Profiling the Vulnerability of Palestine Refugees from Syria Living in Lebanon*, 2015.

(35) UNDP, *Poverty, Growth and Income Distribution in Lebanon*, August 2008.

(36) IMF, Country Report No. 15/190, *Lebanon 2015 Article IV Consultation—Press Release; Staff Report; and Statement by the Executive Director for Lebanon*, July 2015. Available from <http://www.imf.org/external/pubs/ft/sr/2015/cr15190.pdf>

(37) ILO, *Towards Decent Work in Lebanon: Issues and Challenges in Light of the Syrian Refugee Crisis*, 2015.

(38) World Bank, *The Impact of the Syrian Crisis on Lebanese Trade*, 2015; IDAL, *AgriPlus Program, Lebanese Exports by Means of Transportation, from January to May - 2014/2015*.

(39) Banque Du Liban (Central Bank of Lebanon).

(40) Banque Du Liban (Central Bank of Lebanon).

(41) These include, for example, MoSA, particularly through its policy mandate, Social Development Centres, the Lebanon Host Communities Support Program (LHSP), National Poverty Targeting Program (NPTP), as well as its National Plan to Safeguard Children and Women in Lebanon; other ministries including MEHE, MoEW, MoPH and systems managing Lebanon's labour market and private sector, regular institutions working to expand service delivery at national and municipal levels including water establishments and public hospitals, aid harmonization systems and participatory planning processes, including those managed by the Council for Development and Reconstruction.

prepared by the Ministry of Environment (MoE) in 2014<sup>42</sup> underlined incremental degradation in four environmental sectors due to the presence of displaced populations from Syria. An increase of 20 percent in air emissions was registered nationwide in 2014. Increases of 8 to 12 percent in water demand and 8 to 14 percent in waste generation were observed. In the solid waste sector, an estimated additional 16 percent of annual waste was generated, stressing the already under-resourced infrastructure. The report also indicated that urban densification has increased by one-third since the Syrian conflict began, with population density escalating

from 400 to 520 persons or more<sup>43</sup> per square kilometer. These factors, combined with water scarcity and haphazard land use, are negatively affecting living conditions and the agricultural production which provides livelihoods for many Lebanese and displaced Syrians.

(42) MoE, EU and UNDP, *Lebanon Environmental Assessment of the Syrian Conflict and Priority Interventions*, 2014.

(43) Ibid. However, this number may be an underestimate if unregistered displaced Syrians are considered along with those registered with UNHCR. Lebanon's geographic area is 10,452 square kilometers, in which an estimated 4 million Lebanese reside, in addition to an estimated 1.8 million non-Lebanese (including unregistered displaced Syrians), suggesting a population density as high as 574 persons per square kilometer.

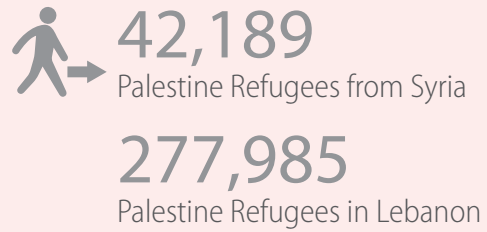
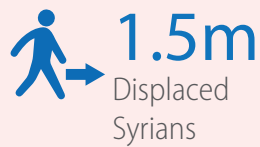
Population in need	TOTAL	Female	Male	Children
Vulnerable Lebanese	1,500,000	745,875	753,938	467,250
Displaced Syrians	1,500,000	781,368	718,632	795,817
Palestine Refugees	320,174	161,688	158,486	122,050
<b>TOTAL</b>	<b>3,320,174</b>	<b>1,688,931</b>	<b>1,631,055</b>	<b>1,385,117</b>

Institutions to be supported		
Central Ministries and Government entities	12	MEHE, MoSA, MoIM, PCM, MoPH, MoET, MoA, MoL, MoI, CDR, MoEW, MoE
Municipality and Union of Municipalities	1005 Municipalities 46 Unions	244 + 33 Unions supported by Social Stability and Livelihood Sector 200 supported by Shelter Sector 1005 +46 Union supported by Energy & Water sector
Governors' offices	6	Support to Governors' offices in Bekaa, Baalbek-Hermel, Akkar, North, South, Nabatieh
Ministry of Agriculture Offices and Centres	7 offices and 27 centres	
Social Development Centres	60	Supported by Protection and Food Security sector
Primary Health Care Centres	350	250 MoPH-PHCs + Around 100 PHCs supported by Health partners
Public Hospitals	27	
Healthcare institutions	80	
Public Schools	100	To be rehabilitated and equipped
Water establishments + LRA + EdL	6	

Communities		
Cadastres	251 vulnerable cadastres	
Micro, Small, and Medium Enterprises (MSMEs) & Cooperatives	1,800	MSMEs and Cooperatives targeted directly (1,800, including support to micro-entrepreneurs) and indirectly (1,000 through value chains interventions – average 50 direct and indirect MSME per value chain)

# POPULATION IN NEED AND TARGETED

**3.32 million** People are in Need



**1.9 m** People targeted for protection and direct assistance



**1.5 m**  
Displaced Syrian

**300,000**  
Vulnerable Lebanese

**117,189**  
PRL and PRS

**2.1 m** People targeted for service delivery, economic recovery and social stability



**1.2 m**  
Vulnerable Lebanese

**840,000**  
Displaced Syrian

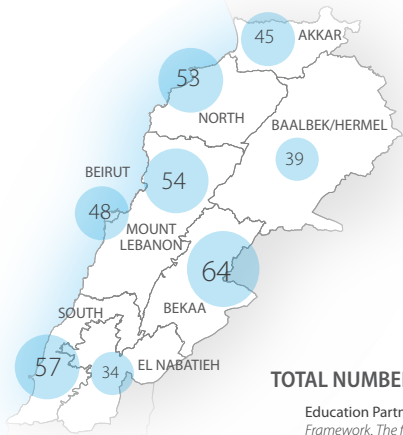
**62,189**  
PRL and PRS

## APPEALING PARTNERS

**95** Partners (Ministries, UN agencies, INGOs and NNGOs)

Number of partners per governorate

Source: ActivityInfo



AKKAR	-	19	17	17	10	19	18	13	15	6	11
BAALBEK/ HERMEL	-	14	10	16	9	8	14	9	11	5	10
BEIRUT	-	10	10	23	7	7	13	8	14	11	10
BEKAA	-	16	20	27	15	21	19	18	16	12	14
EL NABATIEH	-	10	11	11	6	7	11	10	10	4	5
MOUNT LEBANON	-	14	15	19	10	16	12	11	14	15	12
NORTH	-	16	16	19	15	20	19	16	17	8	16
SOUTH	-	17	16	21	17	19	15	15	15	12	14
<b>TOTAL NUMBER OF PARTNER PER SECTOR</b>	<b>-</b>	<b>31</b>	<b>30</b>	<b>33</b>	<b>29</b>	<b>35</b>	<b>30</b>	<b>29</b>	<b>25</b>	<b>19</b>	<b>20</b>

**Education Partners:** MEHE is currently in the process of selecting NGO partners who will be able to implement different components of the Education Results Framework. The first selection is expected to be finalized in January 2016. After this, MEHE will review new submissions from NGO partners every three months.



Photo by: UNICEF/Ada

# Response Strategy



# III 2016 LEBANON CRISIS RESPONSE

## 3.1 The 2016 Crisis Response

The 2016 LCRP outlines the second year of the plan launched in December 2014, building on the efforts realized during the first year, and preparing for a new multi-year response strategy for 2017-2020. The 2016 LCRP is based on an agreed set of priorities guided by national plans and strategies, implemented under the overall leadership of the Government of Lebanon, and in close partnership with international and national partners. The Plan has a strong focus on humanitarian assistance to vulnerable communities, but also seeks to expand investments, partnerships and delivery models for stabilization.

The 2016 LCRP:

- **Outlines protection and assistance** to be provided to the most vulnerable Lebanese, displaced Syrians and Palestine refugees – strengthening the link between humanitarian action and Lebanon's own growth and development;
- **Promotes Lebanese leadership and capacities**, working increasingly through Lebanese institutions, systems, organizations and communities to guide and implement activities;
- **Strengthens collective action** around the role of local institutions, the quality as well as reach of services, and the convergence of assistance in priority areas;
- **Scales up delivery mechanisms** that are responsive to needs and offer clear benefits to all vulnerable communities;
- **Expands partnerships to improve the quality of implementation**, developing tools to measure the interaction between conflict, humanitarian need and poverty, and building on experience to design equitable, smarter and cost-efficient programming; and
- **Increases focus on aid coordination** with and through government and non-government structures.



Photo: ILO

## 3.2 Response Strategy and Strategic Priorities

The three Response Areas of the LCRP address urgent humanitarian needs for the most vulnerable populations in Lebanon, particularly displaced Syrians, as well as the coping capacity of all crisis-affected communities and certain deeper-rooted development gaps. Interventions are based on identified needs, capacity to implement and the potential to scale up for a positive impact on stabilization.

### RESPONSE AREA 1. PROVIDE MATERIAL AND LEGAL ASSISTANCE TO THE MOST VULNERABLE AMONG THE DISPLACED FROM SYRIA AND POOREST LEBANESE

*This response area addresses the increasing needs of the affected populations while limiting as much as possible the rapid deterioration of social and economic conditions based on economic, demographic and geographic sensitivities. It addresses the capacity of these communities to cope with the worst effects of poverty and displacement.*

**The strategic priority for this response area is to ensure humanitarian assistance and protection for the most vulnerable among the displaced from Syria and poorest Lebanese.** It aims to:

- Supplement the ability of the most vulnerable Lebanese and persons displaced from Syria to meet their survival needs through protection and humanitarian assistance, reducing exposure to homelessness, hunger and the worst effects of poverty;
- Ensure that the presence of the persons displaced from Syria on Lebanese territory accords with Lebanese laws and regulations, that they are supported based on their needs, and that they continue to be assisted in collaboration between GoL and UN agencies, national and international NGOs, in accordance with international human rights norms, while anticipating their repatriation once the conditions allow for a safe return, while abiding by the principle of non-refoulement;
- Continue facilitating voluntary access to civil documentation for persons displaced from Syria as per Lebanese laws, regulations and policies;
- Continue to respond to emergency humanitarian needs as they arise;
- Channel support to persons displaced from Syria through public institutions wherever possible, ensuring that humanitarian assistance continues to strengthen national capacities and benefit all vulnerable populations;
- Strengthen GoL management of the response,



including through enhancing border systems and further strengthening the capacities of implicated national institutions;

- Build capacities of Lebanese civil society and community-based organizations in their work on behalf of displaced Syrians and other vulnerable populations.

Key sectoral responses include Basic Assistance, Food Security, Shelter and Protection.

## **RESPONSE AREA 2: LINK VULNERABLE GROUPS AND LOCALITIES TO STRENGTHENED BASIC SERVICES AND PROTECTION**

*This response area will, in close coordination with line ministries, strengthen national and local capacity to meet increasingly overwhelming service-related needs and seek to reinforce confidence in the quality and accessibility of public services for vulnerable populations. It streamlines the number of direct delivery emergency interventions compared to previous years, and expands community-level investments to reduce unsustainable and damaging coping strategies and improve municipal delivery. Where possible, this response area will foster a “convergence” approach to service expansion, whereby the social development services and municipalities are supported to ensure a minimum package of services in the most vulnerable areas. The response will also seek opportunities to collaborate more effectively with the private sector.*

**The strategic priority for this response area is to strengthen the capacity of national and local delivery systems to expand access to and quality of basic public services.** It aims to:

- Ensure vulnerable children can access and learn in a quality learning environment, including by strengthening the absorption capacity of formal and non-formal education and increasing geographic coverage;
- Ensure that the most vulnerable Lebanese and displaced from Syria can access affordable healthcare, with a focus on accessibility and quality of services and controlling disease outbreaks;
- Increase outreach to and responsiveness of community and institutional systems to protect the most vulnerable, especially children and women at risk of violence (including armed violence, abuse, exploitation and neglect) and to provide referrals and a full package of services, while providing appropriate support to survivors through a robust and coordinated national system;
- Expand energy, safe water, sanitation and hygiene for the most vulnerable Lebanese and displaced from Syria through emergency gap-filling and by reinforcing existing services.

Key sectoral responses include Education, Health, Energy and Water, Social Stability and Protection.

## **RESPONSE AREA 3: SUPPORT NATIONAL INSTITUTIONS TO PRESERVE SOCIAL STABILITY**

*This response area introduces rapid-impact job creation and income-generation opportunities for local economies, benefiting the most vulnerable communities in accordance with relevant Lebanese laws and regulations. Priority will be given to areas where poverty, unemployment and conflict risks are particularly high. Concurrently, it supports economic growth to foster partnerships stimulating the private sector, strengthen labour market governance, and support Lebanese businesses to improve their labour standards and build labour force skills. It will also invest in national and local capacity to promote dialogue that mitigates tensions, and cooperate with partners, including local authorities, community leaders, UN missions and human rights organizations. These investments will focus particularly on youth and adolescents. They will also integrate actions proposed in Lebanon’s Environmental Management Plan as critical to reducing the growing pressures on Lebanon’s urban and rural areas.*

**The strategic priority for this response area is to reinforce Lebanon’s economic, social, institutional and environmental stability.** It aims to:

### **(i) Expand economic and livelihood opportunities benefiting local economies and the most vulnerable communities:**

- Create jobs and support businesses to generate income for local economies in poor areas benefiting vulnerable communities, in accordance with relevant Lebanese laws and regulations;
- Enhance the productive capacities of micro and small to medium enterprises (MSME) through improving local economic infrastructure and supporting their capability to respond to market demands;
- Support government institutions and government partners to implement necessary economic, labour, social welfare, service delivery, disaster risk management and environmental protection reforms already initiated;
- Reduce the impact of the crisis on Lebanon’s environment and promote environmental recovery.

### **(ii) Promote confidence-building measures within and across institutions and communities to strengthen Lebanon’s capacities:**

- Strengthen government ownership of investments made in stabilization by supporting national planning and implementing, monitoring and aid management processes;
- Address the risks faced by Lebanese, displaced Syrians and Palestine Refugees adolescents and youth with a particular focus on empowering young women and girls; and
- Prevent social tensions within stressed communities

by strengthening government, municipal, community and individuals' capacities to promote intra- and inter-community dialogue.

Key sectoral responses include Shelter, Food Security, Energy & Water, Livelihoods and Social Stability.

### 3.3 LCRP Alignment with the Lebanon 2017-2020 planning framework, Regional Refugee and Resilience Plan (3RP) and GoL 2013 Roadmap of Priority Interventions for Stabilization from the Syrian Conflict, along with other plans and policies

Key processes and frameworks to which the LCRP is aligned include:

1. Lebanon's multi-year programmatic framework: as the second year of the LCRP, **the 2016 response constitutes a transitional plan to the four-year framework (2017-2020)** that will expand the stabilization and development focus and facilitate transition of crisis response to national structures and systems, while maintaining the integrated humanitarian and stabilization response to the projected protracted crisis. The medium-term planning aims to address national objectives and priorities for responding to the impact of the Syrian crisis in Lebanon through an overarching four-year strategic planning framework developed and implemented in collaboration with the UN, national and international NGOs, and donors. Yearly appeals will be developed based on an annual review of needs.
2. The 2016 LCRP is the Lebanon chapter of the **Regional Refugee and Resilience Plan 2015-2016 (3RP)** led by UNHCR and UNDP. As a nationally-owned version of the 3RP, it is tailored to respond to the specific needs of Lebanon and vulnerable populations within this ongoing regional crisis. It ensures that humanitarian and stabilization interventions are mutually reinforcing to deliver value, and emphasize support to Lebanon's national capacities including its aid and assistance management efforts.
3. The LCRP incorporates priority measures articulated in the **GoL 2013 Roadmap of Priority Interventions for Stabilization from the Syrian Conflict** and its updated projects, and furthers its three objectives: (i) to restore and expand economic and livelihood opportunities for vulnerable groups; (ii) to restore and build resilience in equitable access to and quality of sustainable public services; and (iii) to strengthen social stability. Programmes implemented directly by MEHE, MoSA, MoEW, and MoPH are represented in the LCRP's results matrix. All LCRP projects investing in Lebanon's capacities are linked to needs articulated in the Roadmap, particularly the first two tracks.
4. The LCRP responds to regional priorities captured in the **Comprehensive Regional Strategic Framework (CRSF) 2014-16** which recommends: (i) Supporting national leadership and ownership of the response; (ii) Expanding sustainable programming; and (iii) Addressing inter-community tensions as a central component of all aid efforts. The CRSF and LCRP both centralize investment in sectors linked to inter-community tensions, and prioritize local conflict mitigation capacities.
5. The LCRP contains interventions developed as part of the regional **No Lost Generation strategy (NLG)**, specifically through support to the RACE Strategy, and other sectoral investments in protection, psychosocial support and skill development for children, adolescents and youth, such as the Ministry of Social Affairs' National Plan to Safeguard Children and Women in Lebanon (MoSA NP). The LCRP Education and Protection Sectors contain the GoL-endorsed budget for RACE and the MoSA NP implementation in 2016, captured through UN agencies and participating NGOs and the funding appeals by MEHE and MoSA, with a view to moving to full government implementation.
6. The LCRP is coherent with the **Resilience Agenda** endorsed at the Resilience Development Forum held in Jordan in November 2015, which brought together representatives of Governments of countries affected by the Syrian crisis, UN, international and national NGOs, the donor community and the private sector to discuss key guiding principles and elements of a medium-term regional response.



Photo by: JamesGiles

# Delivering the LCRP

## Core Principles and Commitments

Building on the needs and results-based approach used for defining outputs, targets and related budgets, key priorities for improving delivery of the LCRP in 2016 include:

- Strengthening current tracking and monitoring mechanisms;
- Improving transparency and accountability; and
- Strengthening national coordination and implementation systems in view of the broadened focus on stabilization and the multi-year programming envisioned for 2017-2020.

As a basis for addressing these priorities, strengthening partnership and enhancing the overall effectiveness of the LCRP, several core principles and commitments have been agreed between GoL and its international partners.

### Principles of Partnership and Accountability

#### PURPOSE:

- Enhance the effectiveness and transparency of the LCRP, and the predictability of funding, by complementing its guiding principles.
- Provide guidance, applicable to all LCRP partners, for a timely, effective and coordinated response by clarifying requirements with respect to key functions and processes: information sharing and tracking, planning and implementation.
- Ensure synergies between national planning and partner responses by: aligning LCRP efforts with national strategies and agreed plans; and enabling the line ministries to take a stronger role in leadership and coordination at the national and local levels, while benefiting from the support of the UN and NGOs.

#### PRINCIPLES FOR LCRP

##### 1. Planning

- The LCRP steering committee guides the allocation of un-earmarked funding and other resources among the sectors following participatory consultations with the relevant stakeholders, and in a timely manner.
- In line with the LCRP steering committee guidance, sector steering committees ensure alignment of un-earmarked\* funding to key priorities and underfunded needs of the LCRP. For un-earmarked funding, sector steering committees recommend to the relevant donors on the allocation of funding, working through funding instruments such as the Lebanon Recovery Fund. Appealing partners commit to use earmarked funding in coordination with sector steering committees and in adherence to agreed LCRP sector outcomes and outputs. The LCRP partners review progress on agreed objectives and impact through regular and ad hoc meetings of sector steering committees and the LCRP steering committee.
- As appropriate, line ministries should be consulted to ensure conformity with national technical standards.
- In an attempt to avoid duplication of efforts, a dual coordination structure should be avoided, and a sector coordination system involving all relevant LCRP partners should be utilized in a systematic manner for planning purposes.

##### 2. Implementation

Sector steering committees provide relevant information and facilitate operation of partners for successful implementation of projects.

##### 3. Information sharing and tracking

- Appealing partners are responsible for reporting fully and in a timely manner on funding and other resources received through agreed coordination and reporting mechanisms that are systematic and transparent.
- Funding and other resources received and/or committed should be reported to the LCRP steering committee..
- LCRP implementing partners are responsible for reporting on a monthly basis to the relevant sector steering committee on the progress/achievements of the activities that they are implementing.
- Sector steering committees report on progress/achievements to the LCRP steering committee. The format, content and frequency of reports will be decided at the start of the implementation period.

\*Un-earmarked funding in this context refers to a contribution or commitment for which the donor does not require the funds to be used for a specific project, sector and/or organization (Financial Tracking System definition).



## Governance and Management

### Governance mechanism

In the second year of implementation, the LCRP will continue to ensure that the coordination structures align with both the stabilization and humanitarian dimensions of the response under the overall leadership of the Minister of Social Affairs and the UN Resident Coordinator/Humanitarian Coordinator<sup>44</sup>.

- **Inter-Sectoral Working Group:** LCRP sectors are coordinated through the Inter-Sectoral Working Group led by MoSA, a mechanism that reports to the leadership body of the LCRP and includes LCRP Sector Leads from line ministries, as well as sector coordinators, and key response partners as per the Terms of Reference of the Inter-Sector Working Group. In accordance with their specialized mandates, UNHCR and UNDP act as co-chairs. This mechanism reports to the LCRP steering committee co-chaired by the Minister of Social Affairs and the UN Resident Coordinator/Humanitarian Coordinator and includes technical Government ministries<sup>45</sup> as well as crisis cell ministries and key response partners from the UN, donors and NGOs.
- **Sector steering committees** are supported by working groups from the involved national and international partners that contribute to the technical and operational coordination of sector-specific issues including monitoring of progress, and sharing of information, experiences and challenges. Working groups will report to the sector steering committees, and not duplicate the functions of the latter. Relevant Terms of Reference will be revised in 2016 to reflect these roles, responsibilities and reporting lines.
- **Aid coordination:** efforts are ongoing to improve aid management to assist in coordinating GoL/donor/UN/World Bank priorities, and in tracking funding against those priorities.
- **Advisory Group on displaced Syrians:** led by MoSA in collaboration with UNHCR and Crisis Cell ministries.

(44) The RC/HC is accountable for oversight of humanitarian and development responses in countries through the Inter-Agency Standing Committee for coordination of humanitarian action and the Delivering-As-One initiative of the UN Secretary-General. Under these principles, lead agencies for specific sectors in Lebanon are accountable for representing the interest of their sectors at every level of response management.

(45) MoIM, MoSA, MoL, MoPH, MoFA MEHE, MoET, MoA, MoEW, MoE, PMO, HRC, and CDR.

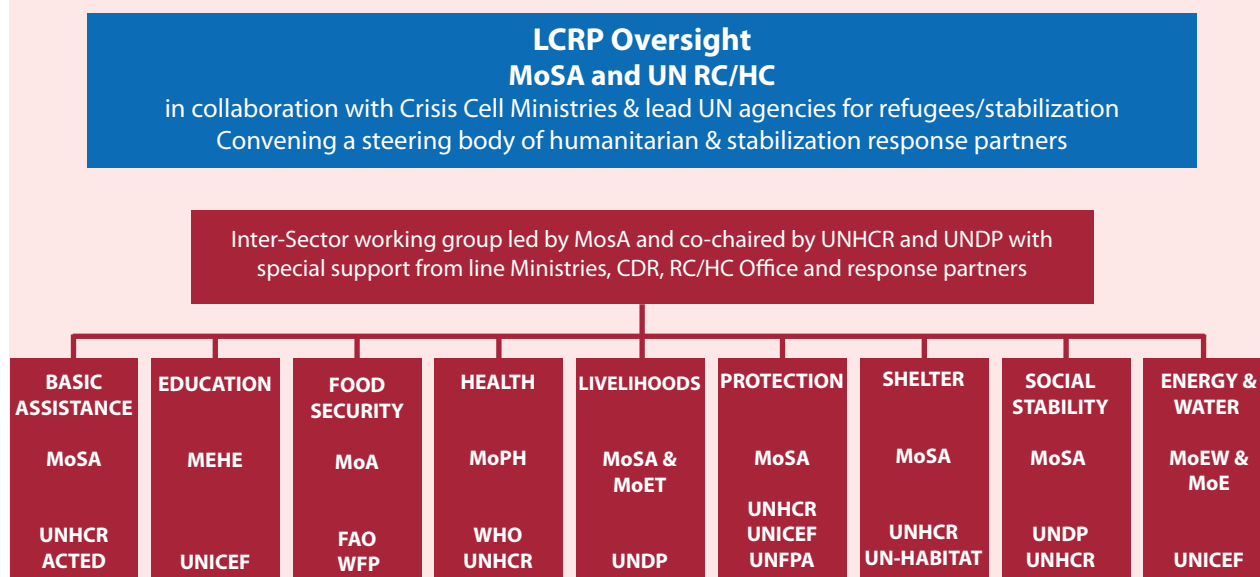
## IMPLEMENTATION FRAMEWORK OF THE LCRP

**AUTHORITY & ACCOUNTABILITY:** The Government of Lebanon’s Crisis Cell is the highest national authority for international partners supporting the crisis response inside Lebanese territory, including through the LCRP, in accordance with Lebanese laws and regulations as well as applicable international law.

**OVERSIGHT:** The Ministry of Social Affairs is mandated by the Crisis Cell to oversee the Government’s response to the crisis in Lebanon. The LCRP steering committee is co-chaired by the Minister of Social Affairs and the United Nations Resident Coordinator/Humanitarian Coordinator (RC/HC), and includes participation of Crisis Cell ministries, humanitarian and stabilization partners across the UN, national and international NGOs, and donors.

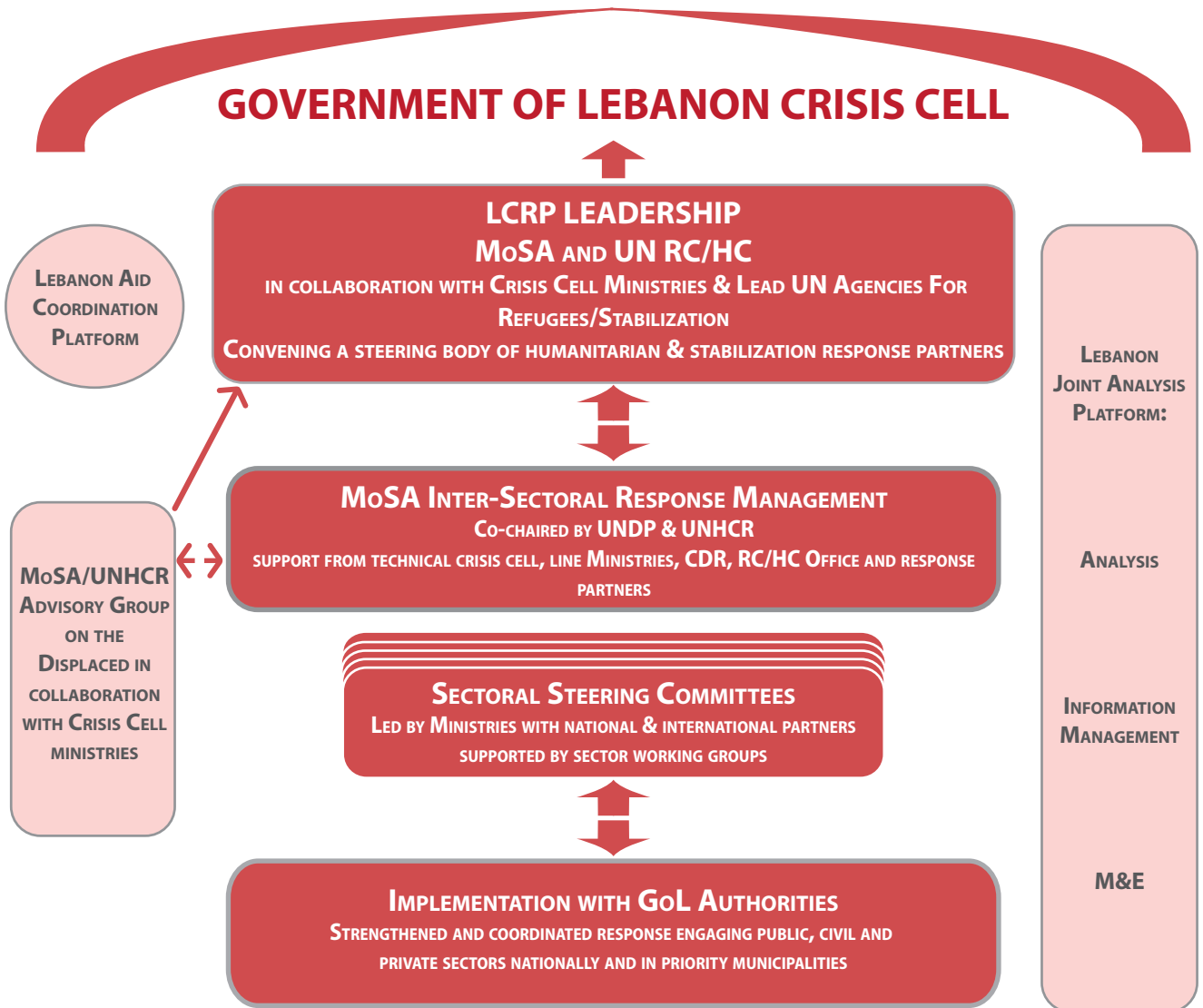
**PLANNING AND COORDINATION:** LCRP activities will be coordinated by line Ministries through Sectoral Steering Committees, and sector working groups with support of specialized agencies, donors and other UN/NGO partners – also engaging Lebanon’s civil and private sectors where necessary. LCRP progress and strategies will be steered by GoL through MoSA in collaboration with the UN, represented by the UN RC/HC (supported by the Resident Coordinator’s Office and OCHA), with the Crisis Cell ministries and the lead UN agencies for refugees and stabilization responses (UNHCR and UNDP respectively).

The current structure and management of LCRP sectors is organized nationally as follows, with similar counterpart structures operating in five operational areas of Lebanon\*:



\* The structure and organization of LCRP sectors is currently under review for potential adjustment for the 2017-2020 multi-year framework to align more closely with government structures and engage the specialized capacities of participating UN/NGO organizations. Several line ministries participate in sectors in addition to the lead ministries, and inter-ministerial coordination is critical to successful planning and reporting.

## INTEGRATED RESPONSE MANAGEMENT



## MONITORING AND EVALUATION FRAMEWORK

Monitoring and evaluation is critical for improving effectiveness and accountability. Beginning in 2016, the M&E framework for the LCRP will be strengthened, building on the mechanisms and arrangements established in 2015. The overall aim will be to provide a framework for measuring progress in implementation, ensuring transparency on how resources are being allocated and used, and facilitating strategic and programmatic adjustments. The M&E framework will further facilitate identification and analysis of challenges to date, to inform future planning.

### STRATEGIC OBJECTIVES AND INDICATORS

#### Strategic objective 1: Ensure humanitarian protection and assistance for the most vulnerable Lebanese and displaced from Syria.

Key Indicators	Targets
Number of individuals who benefitted from counselling, assistance, awareness sessions and other support to obtain legal stay, civil documentation and legal remedies	250,000 individuals
Number of individuals (by population cohort) assisted to have access to adequate, affordable and maintained shelter space and to live in areas with adequate physical conditions	817,946 individuals
Number of individuals receiving food assistance	934,320 individuals
Number of individuals receiving hospital and diagnostic services	128,500 individuals
Number of individuals, including children and caregivers benefitting from psychosocial support (SGBV and CP)	550,149 individuals

#### Strategic objective 2: Strengthen the capacity of national and local delivery systems to expand access to and quality of basic public services.

Key Indicators	Targets
Number of individuals with specific needs benefitting from services including persons with disabilities and older persons	50,000 individuals
Number of SDCs and organizations providing quality SGBV and child protection services	57 institutions/organisations
Number of key healthcare institutions strengthened	278 institutions
Number of children enrolled in formal education	370,000 individuals
Number of children enrolled in non-formal education	184,000 individuals
Number of schools rehabilitated (minor and major rehabilitation)	600 schools
Number of vulnerable people accessing safe and equitable water	1,343,137 individuals
Number of socio-economically vulnerable HHs assisted through the NPTP	20,000 HHs
Number of targeted villages benefitting from improved infrastructure and environmental assets	251 villages
Number of HHs with access to equitable and reliable electricity for basic household and security purposes	500,000 individuals
Number of persons benefitting from solid waste management systems to alleviate environmental impact of the crisis	2,084,494

#### Strategic objective 3: Reinforce Lebanon's economic, social, environmental and institutional stability.

Key Indicators	Targets
Number of municipalities benefitting from comprehensive support to promote social stability	244 municipalities
Number of law enforcement and security actors trained on code of conducts and guidelines	900 actors
Number MSMEs supported through training, cash & in-kind grants	1,800 MSMEs
Number of targeted vulnerable persons employed through public infrastructure and environmental assets improvement	65,000 individuals
Number of communities with functioning conflict prevention initiatives/mechanisms	32 cadastres
Number of youth engaged in social stability and community engagement initiatives	12,550 individuals
Number of government institutions strengthened to manage and enforce measures that mitigate environmental impacts.	160 ministries/municipalities
Number of individuals employed in the agriculture sector	30,000 individuals
Number number of individuals benefitting from capacity building in protection (including public officials and civil society)	4,000 individuals



M&E will be coordinated and managed at all 3 levels of the LCRP institutional and coordination architecture:

- At the sectoral level, individual appealing/ implementing partners will be responsible for reporting updates on progress and resources allocated/ used against sector strategies and corresponding results frameworks, using ActivityInfo. These will be provided to the sectoral steering committees, which will be responsible for review and preparing periodic monitoring and progress reports (see below).
- At the inter-sectoral level, the Inter-Sectoral Working Group is responsible for monitoring progress across the LCRP against sector outcomes and outputs. It reports to the LCRP Steering Committee.
- The LCRP Steering Committee will periodically review progress on LCRP implementation to inform its discussions and decisions on overall strategy and implementation issues. This includes a mid-year review for the period January – June 2016, which will discuss progress and decide priorities for the remainder of the year.

• **Monitoring and evaluation products.** A number of M&E products will be developed during the course of 2016, including bimonthly sectoral dashboards and quarterly inter-sectoral dashboards.

• **Tracking and information management system.** The 2016 Lebanon Crisis Response Plan will continue to be monitored through ActivityInfo, which reports against a standard set of indicators agreed by sector. At the same time, GoL and international partners will examine options for strengthening the existing tools and system to make them more accessible, improving compatibility with existing government aid coordination mechanisms, and expanding analytical and reporting functionality.

• **Financial tracking and reporting:** Funds for LCRP programmes will be received and programmed in three ways: 1) bilaterally through government ministries and institutions; 2) through UN/NGO response partners; and 3) through pooled funding arrangements. MoSA, supported by the UN RC/HC, and in collaboration with Crisis Cell ministries, will report on funds received for the LCRP as part of its quarterly and annual reporting to the Crisis Cell, based on consolidated information captured in existing financial tracking systems. All humanitarian contributions to the LCRP through government and response partners will be captured through the financial tracking system managed by OCHA. While the inter-sector tracks and manages reporting on funding by sector, specific stabilization contributions to Lebanon through government and response partners are not currently systematically captured. However, CDR, jointly with the UN, is working with the relevant government institutions to support an integrated financial tracking system to improve management of LCRP and bilateral funds received in Lebanon. This will take place in the context of updating national stabilization priorities and strengthening Lebanon's

aid coordination platform.

• **Review:** Mid-year and final reports on the 2016 LCRP will be presented by MoSA, supported by the RC/HC, under the auspices of the Crisis Cell. In preparation for this consultation, GoL and its partners will review the progress of the LCRP in a process supported by the inter-sector mechanism and coordinated through MoSA and the UN RC/HC supported by the Crisis Cell Ministries, UNDP, UNHCR, OCHA and RCO as well as other key response partners, to ensure that responses continue to match Lebanon's evolving needs and are appropriate to levels of financing. The mid-year consultation will set the direction for the second half of 2016.

• **Consultations with affected populations:** LCRP partners will continue to ensure the response engages affected populations in both local programme design and implementation, including where possible regular visits aimed at obtaining feedback from vulnerable communities on needs, targets and effectiveness of LCRP interventions. Plans in 2016 will facilitate access of affected populations to communication processes in which they are able to ask questions, provide feedback, and contribute to discussions about current and longer term strategies.

• **Communicating the LCRP:** The LCRP will be supported by a government-led integrated multi-agency communication strategy. Priorities will include: (i) maintaining international momentum in support of Lebanon's stability and finding durable solutions to the crisis; (ii) maintaining an international sense of accountability for Lebanon's vulnerable populations; (iii) strengthening government leadership of Lebanon's assistance frameworks; (iv) fostering intercommunal understanding and acceptance; and (v) joint messaging on key achievements and critical needs.

• **Financing the LCRP** also presents an opportunity to strengthen aid architecture and harmonization in Lebanon. Acute needs (primarily for the displaced from Syria) will continue to be funded on an appeal basis, both bilaterally and through pooled funds such as the Humanitarian Pooled Fund (HPF)-Lebanon, the MDTF managed by the World Bank, and the UN-managed Lebanon Recovery Fund chaired by GoL. LCRP projects could also be supported through contributions to other Lebanese Ministries and UN programmes (e.g. RACE, MoSA NP, LHSP) that will also enable greater coherence and promote joint programming. Cost-sharing opportunities will be explored with the Government, along with public-private partnerships, to support government implementation of Roadmap projects. The introduction of an integrated financial tracking system, building on existing systems, will also enable better planning of investment coordination between CDR and its international partners – including members of the Gulf Cooperation Council – to ensure a predictable level of support to communities. Further efforts will focus on broadening the diversity of funding, including through donors from the MENA region and other partners.





Photo by: UNHCR/A. McConnell

# Sector Plans



# FOOD SECURITY

**Lead Ministry:** Ministry of Agriculture (MoA)

**Coordinating Agencies:** WFP and FAO

**Contact information:** Nadine Abdel Khalek

*nkhalek@agriculture.gov.lb; Elena Rovaris [elena.rovaris@wfp.org](mailto:elena.rovaris@wfp.org);  
Bruno Minjauw [bruno.minjauw@fao.org](mailto:bruno.minjauw@fao.org)*

PEOPLE IN NEED



**1,401,721**

PEOPLE TARGETED



**1,109,832**

REQUIREMENTS (US\$)



**473.5 million**

# OF PARTNERS



**30**

GENDER MARKER

**1**



## SECTOR OUTCOMES

**OUTCOME 1:** Promote food availability.



\$45.2 m

**OUTCOME 2:** Promote food accessibility.



\$416.6 m

**OUTCOME 3:** Promote food utilization.



\$7.7 m

**OUTCOME 4:** Promote stabilization.



\$4 m

### INDICATORS

# of individuals (including adolescents and youth) receiving in-kind food assistance

# of individuals receiving food assistance [cash-based transfers for food]

# of farmers with enhanced farming production

# of agricultural institutions supported for agricultural livelihoods

# of individuals employed in the agriculture sector

# of individuals supported for improved nutritional practices



### PRIORITY INTERVENTIONS

- 1: Provide direct and critical food assistance to ensure improved food availability through in-kind food assistance (e.g. food parcels, community kitchens) and improved food access through cash-based transfers for food (e.g. e-cards, food vouchers) for vulnerable individuals.
- 2: Improve agriculture livelihood by increasing capacity of production of vulnerable small-scale farmers and by increasing employability in the food and agriculture sector.
- 3: Improve nutritional practices and household dietary diversity.
- 4: Strengthen food security information systems and coordination mechanisms.



## Energy & Water

**Lead Ministry/Co-Lead:** Ministry of Energy and Water (MoEW)/  
Ministry of Environment (MoE)

**Coordinating Agencies:** UNICEF

**Contact information:** Suzy Hoayek [suzy.hoayek@sissaf-lebanon.eu](mailto:suzy.hoayek@sissaf-lebanon.eu);  
David Adams [dadams@unicef.org](mailto:dadams@unicef.org)

 <p>PEOPLE IN NEED</p> <p><b>2,427,000</b></p>	 <p>PEOPLE TARGETED</p> <p><b>2,022,000</b></p>	 <p>REQUIREMENTS (US\$)</p> <p><b>391.2 million</b></p>
 <p># OF PARTNERS</p> <p><b>35</b></p>	<p>GENDER MARKER</p> <p><b>1</b></p>	



## SECTOR OUTCOMES

OUTCOME	INDICATORS
<b>OUTCOME 1:</b> Access to improved electricity	<p><b>INDICATORS</b></p> <p>% of target population that has equitable and reliable access to electricity to ensure sufficient electric current for lighting, operation of basic household machinery and security purposes.</p> <p>% of target population that has access to safe and equitable water in sufficient quantities for drinking, cooking, personal and domestic hygiene.</p> <p>% of target population that has access to improved, sustainable, culturally and gender appropriate sanitation and drainage services for target population.</p> <p>% of target population that has increased awareness of local/municipal authorities with respect to legislation, guidelines and measures that can be practically adopted for mitigating the impact on the environment in terms of solid waste, air quality and landuse/ecosystems.</p> <p>% of the target population that are aware of key public health risks and are capacitated to adopt good Water and Sanitation related practices and measures to prevent the deterioration in hygienic conditions and Water and Sanitation related diseases.</p> <p>All sector partners are prepared to respond to agreed emergency scenarios and are aware of priorities and targets.</p>
<b>OUTCOME 2:</b> Access to safe water	
<b>OUTCOME 3:</b> Increase access to improved, sustainable, and culturally and gender appropriate sanitation services including wastewater management, vector control and mitigation of flood risks (stormwater drainage) for target population	
<b>OUTCOME 4:</b> Mitigate impacts of the Syrian crisis on the environment in Lebanon, including on air quality and landuse, and management of solid waste	
<b>OUTCOME 5:</b> Maintaining hygienic conditions	
<b>OUTCOME 6:</b> Contingency and preparedness	



## PRIORITY INTERVENTIONS

- 1: Ensure sustainable and equitable access to electricity for the vulnerable population.
- 2: Ensure sustainable and gender appropriate, equitable access to safe water for the target population in sufficient quantities for drinking, cooking, personal and domestic hygiene.
- 3: Increase access to improved, sustainable, culturally and gender appropriate sanitation (solid waste and wastewater management, vector control, ...) irrigation, flood prevention, storm water management, and drainage services (mitigation of flood risks) for target population.
- 4: Mitigate impact of the Syrian crisis on the environment in Lebanon.
- 5: Enable target populations to use and maintain water and sanitation facilities, make them aware of key public health risks to prevent the deterioration in hygienic conditions and capacitate them to adopt sound hygiene practices.
- 6: Strengthen and harmonize national and local level systems in line with the actuated laws, guidelines and existing national strategies to ensure improved service provision and timely response.
7. Ensure preparedness to possible risks: develop relevant studies, plans, strategies and contingency stock to improve targeting, prioritization and response.



## EDUCATION

**Lead Ministry:** Ministry of Education and Higher Education (MEHE)

**Coordinating Agencies:** UNICEF

**Contact information:** Iman Assi [iassi@mehe.gov.lb](mailto:iassi@mehe.gov.lb); Dorine Farah [dfarah@mehe.gov.lb](mailto:dfarah@mehe.gov.lb); Gemma Bennink [gbennink@unicef.org](mailto:gbennink@unicef.org)

PEOPLE IN NEED



983,284

PEOPLE TARGETED



529,933

REQUIREMENTS (US\$)



388.2 million

# OF PARTNERS



Not Specified\*

GENDER MARKER

1

\* MEHE is currently in the process of selecting NGO partners who will be able to implement different components of the Education Results Framework. The first selection is expected to be finalized in January 2016. After this, MEHE will review new submissions from NGO partners every three months.



## SECTOR OUTCOMES

**OUTCOME 1:** Ensuring equitable access to educational opportunities for boys and girls.



\$319.8 m

**OUTCOME 2:** Improving the quality of teaching and learning.



\$62.4 m

**OUTCOME 3:** Strengthening national education systems, policies, and monitoring.



\$5.9 m

### INDICATORS

# of children and adolescents enrolled in formal education

# of children and adolescents enrolled in Non-Formal Education (NFE)

# of children and adolescents referred to formal education including Accelerated Learning Programme (ALP)

% and # of parents who are aware of the formal school registration process

# of individuals reached with outreach and awareness sessions

% of children in remedial language education who remain in education

# of assessments undertaken

# of active parent groups and community committees



## PRIORITY INTERVENTIONS

- 1: Support enrolment to formal education for school-aged boys and girls.
- 2: Support enrolment to Non-Formal Education for children who are outside the formal system.
- 3: Outreach to get children to public schools.
- 4: Support to ensure retention in formal education.
- 5: Strengthen national education systems, policies, and monitoring.
- 6: Strengthen community engagement to support a sustainable behavioural change towards education.



## BASIC ASSISTANCE

**Lead Ministry:** Ministry of Social Affairs (MoSA)

**Coordinating Agencies:** UNHCR and ACTED

**Contact information:** Hadi Haddad [hadi\\_haddad@live.com](mailto:hadi_haddad@live.com);

Khalil Dagher [dagherk@unhcr.org](mailto:dagherk@unhcr.org);

Karim Traboulsi [karim.traboulsi@acted.org](mailto:karim.traboulsi@acted.org)

PEOPLE IN NEED



1,551,638

# OF PARTNERS



31

PEOPLE TARGETED



915,090

GENDER MARKER

1

REQUIREMENTS (US\$)



356.6 million



## SECTOR OUTCOMES

**OUTCOME 1:** Targeted severely economically vulnerable populations have improved access to essential goods and services of their choice in a safe, dignified, and empowered manner while decreasing socio-economic vulnerability.



\$174.3 m

**OUTCOME 2:** Targeted population affected by seasonal hazards, displacement shocks, and unexpected circumstances, is able to maintain safe access to goods and services.



\$137.6 m

**OUTCOME 3:** Strengthened social safety net (NPTP) structures to serve most socio-economically vulnerable households by building on existing mechanisms and to improve social stability.



\$44.6 m

### INDICATORS

% and # of severely economically vulnerable households received multi-sector cash transfers

% and # of population profiled

# of total affected HHs found to be socio-economically vulnerable

% of total seasonally vulnerable population assisted

# of households receiving seasonal cash & vouchers grants

Total amount of cash distributed in USD

# of unique HHs benefiting from in-kind assistance



## PRIORITY INTERVENTIONS

- 1: Profile the economic vulnerability of households from a multi-sectoral perspective.
- 2: Scale-up the provision of multi-sector cash assistance for targeting economic vulnerability.
- 3: Provide cash, vouchers and in-kind support to seasonal hazards and emergency scenarios affected households.
- 4: Provide in-kind core relief item kits for households in need.
- 5: Support, expand and strengthen existing social safety net structures.



## HEALTH






**Lead Ministry:** Ministry of Public Health (MoPH)

**Coordinating Agencies:** WHO and UNHCR

**Contact information:** Zeina Ammar [zammar@moph.gov.lb](mailto:zammar@moph.gov.lb);  
Dr. Alissar Rady [radya@who.int](mailto:radya@who.int); Dr. Michael Woodman  
[woodman@unhcr.org](mailto:woodman@unhcr.org)



## SECTOR OUTCOMES

<b>OUTCOME 1:</b> Improved access to PHC services.	 \$126.4 m	<p><b>INDICATORS</b></p> <ul style="list-style-type: none"> <li># of PHC consultations</li> <li># of children who received routine vaccination as per MoPH vaccination calendar</li> <li># of persons receiving hospital and diagnostic services</li> <li># of operational sentinel surveillance sites newly established</li> <li># of key institutions strengthened</li> <li># of public schools adhering to the school health program</li> </ul>
<b>OUTCOME 2:</b> Improved access to hospital and advanced referral care.	 \$134.2 m	
<b>OUTCOME 3:</b> Improved outbreak control.	 \$6.8 m	
<b>OUTCOME 4:</b> Key institutions strengthened.	 \$23.3 m	
<b>OUTCOME 5:</b> Transparency and accountability of health partners ensured.	 \$20,000	



## PRIORITY INTERVENTIONS

- 1: Ensure access for target populations to a standardized package of basic health services at primary health care level.
- 2: Continue to provide support for access to hospital and diagnostic services to displaced Syrians for obstetric and life-saving conditions.
- 3: Prevent and control outbreaks of epidemic-prone diseases with focus on EWARS reinforcement and vaccination activities, especially in high risk areas with the largest displaced Syrian communities.
- 4: Strengthen key institutions for enhanced decentralization, strengthening of PHCs and public hospitals' service delivery, and ensure sustainability of services.
- 5: Reinforce youth health as part of comprehensive reproductive health care well as support the Lebanese school health program.



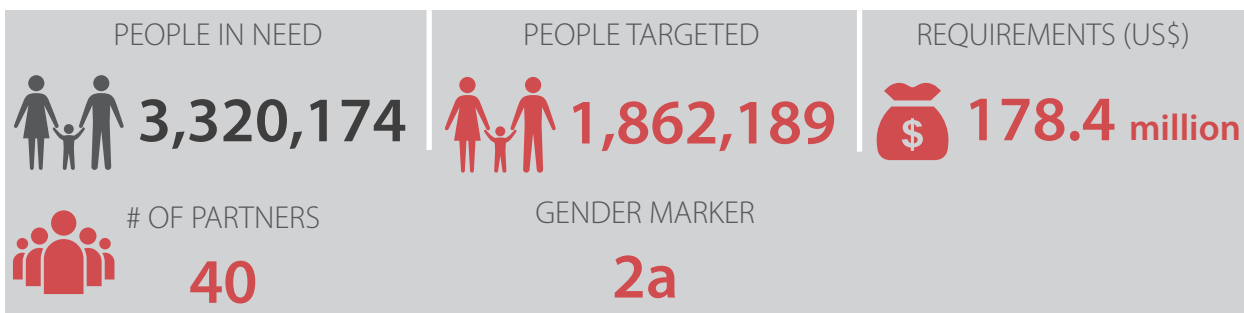


## PROTECTION

**Lead Ministry:** Ministry of Social Affairs (MoSA)

**Coordinating Agencies:** UNHCR, UNICEF and UNFPA

**Contact information:** Aimee Karam [karam.aimee@gmail.com](mailto:karam.aimee@gmail.com);  
Lorenza Trulli [trulli@unhcr.org](mailto:trulli@unhcr.org); Nithiaraj Sellappu  
[nsellappu@unicef.org](mailto:nsellappu@unicef.org); Alexia Nissen [nissen@unfpa.org](mailto:nissen@unfpa.org)



## SECTOR OUTCOMES

**OUTCOME 1:** Persons displaced from Syria have their basic rights respected and enjoy access to justice and legal stay.



\$ 39 m

**OUTCOME 2:** Communities are empowered to contribute to their own protection solutions and community self-management encouraged.



\$ 26 m

**OUTCOME 3:** Access to protection and services is ensured, the most vulnerable women, girls, boys and men are identified, and resettlement realized.



\$ 33.5 m

**OUTCOME 4:** Vulnerable girls and boys are protected from violence, exploitation, abuse and neglect through equitable access to quality child protection services.



\$ 48.1 m

**OUTCOME 5:** The risks and consequences of SGBV are reduced and access to quality services is improved.



\$ 31.8 m

### INDICATORS

# of individuals who benefitted from counseling and assistance, to obtain civil, legal stay or other documentation

# of children benefitting from structured community based child protection and PSS programmes

# of girls and boys at high risk who receive focused, non-specialized PSS and life-skills programming

% of survivors reporting receiving quality psychosocial support and specialized services

# of individuals participating in community center activities including persons with disabilities and older persons

# of protection interventions including referrals from the community and volunteer structures



## PRIORITY INTERVENTIONS

- 1: Increase legal awareness and improve access to legal stay and civil documentation, as per Lebanese laws and regulation.
- 2: Vulnerable boys and girls are protected from violence, abuse and exploitation through strengthened national child protection systems and increased prevention and response services delivered by government, civil society actors and community members.
- 3: Ensuring safe identification and referral for SGBV survivors, access to quality response services and support to community based safety nets to prevent and mitigate risks of SGBV.
- 4: Addressing issues related to accommodation, including rent related security of tenure, as per Lebanese laws.
- 5: Security of the person – including security from violence, arbitrary detention, exploitation and prevention of discrimination.
- 6: Strengthening national systems including Social Development Centers and Community Development Centers to provide holistic and quality services for women and girls, men and boys.



## LIVELIHOODS

**Lead Ministry/Co-Lead:** Ministry of Social Affairs (MoSA)/ Ministry of Economy and Trade (MoET)

**Coordinating Agencies:** UNDP

**Contact information:** Sabine Farah [farah.j.sabine@gmail.com](mailto:farah.j.sabine@gmail.com); Rafif Berro [rberro@economy.gov.lb](mailto:rberro@economy.gov.lb); Bastien Revel [bastien.revel@undp.org](mailto:bastien.revel@undp.org)

PEOPLE IN NEED



555,369

PEOPLE TARGETED



134,607

REQUIREMENTS (US\$)



143.3 million

# OF PARTNERS



30

GENDER MARKER

2a



## SECTOR OUTCOMES

### OUTCOME:

Vulnerable groups, especially youth and women, access to income and employment is improved\*.

*\* The livelihoods strategy will be complying with the Lebanese laws and regulations*



\$143.3 m

### INDICATORS

# of new jobs created in the MSME sector (targeted enterprises)

# of Value Chains valorized and/or being upgraded

# of targeted villages benefiting from improved infrastructure and environmental assets

# of targeted vulnerable persons employed through public infrastructure and environmental assets improvement

% of targeted job seekers who are placed into jobs (after support by employment service centers/or skills training



## PRIORITY INTERVENTIONS

- 1: Provide (start-up) grants (cash/in-kind) coupled with incubation services/training/retraining for Micro, Small and Medium Enterprises.
- 2: Implement integrated Value Chain programmes.
- 3: Rehabilitate of public infrastructure/ environmental assets through labour intensive modalities.
- 4: Support the activities (including access to market information; career guidance; counseling; job matching; etc) and strengthen the capacity of employment services centers and livelihoods centres.
- 5: Support the Ministry of Labour in improving decent work conditions and countering child labour.
- 6: Support the Ministry of Economy and Trade in the implementation of the new Small and Medium Enterprise strategy.



## SHELTER

**Lead Ministry:** Ministry of Social Affairs (MoSA)

**Coordinating Agencies:** UNHCR and UN-Habitat

**Contact information:** Ahmad Kassem [kassema@unhcr.org](mailto:kassema@unhcr.org); Vincent Dupin [dupin@unhcr.org](mailto:dupin@unhcr.org); Nico Hartz [nikolaus.hartz@unhabitat.org](mailto:nikolaus.hartz@unhabitat.org)

PEOPLE IN NEED



2,142,047

PEOPLE TARGETED



817,946

REQUIREMENTS (US\$)



138.7 million

# OF PARTNERS



29

GENDER MARKER

1



## SECTOR OUTCOMES

**OUTCOME 1:** Displaced populations and other vulnerable groups have access to adequate shelter as the standard of shelters is either ensured, maintained or improved.



\$118.4 m

**OUTCOME 2:** Living conditions within temporary settlements and poor urban areas with high ratio of displaced populations and vulnerable groups are improved.



\$18.4 m

**OUTCOME 3:** Lebanese public & private institutions are aware and responsive to the shelter situation of displaced populations and other vulnerable groups.



\$1.9 m

### INDICATORS

# of individuals (by cohort) that benefit from the specific activity



## PRIORITY INTERVENTIONS

- 1: Upgrade shelters to meet minimum standards through minor repairs, or, in exchange for affordable occupancy, adequate rehabilitation.
- 2: Assist makeshift shelters in informal settlements to maintain capacity to withstand adverse weather conditions as well as other threats.
- 3: Upgrade, through a bottom-up holistic approach, highly affected neighbourhoods, through shelter and basic infrastructure activities, to assist all vulnerable groups regardless if displaced (SyrDis, PRS) or not (Leb, PRL).
- 4: Enhance the technical capacity of public and private local institutions to participate and support shelter assistance activities.



## SOCIAL STABILITY

**Lead Ministry:** Ministry of Social Affairs (MoSA)

**Coordinating Agencies:** UNDP and UNHCR

**Contact information:** Sabine Farah  
farah.j.sabine@gmail.com; Bastien Revel  
bastien.revel@undp.org

COMMUNITIES IN NEED



251

# OF PARTNERS



29

COMMUNITIES TARGETED



251

GENDER MARKER

1

REQUIREMENTS (US\$)



119.4 million



## SECTOR OUTCOMES

### OUTCOME:

Local communities and institutions ability to mitigate tensions and prevent conflict are strengthened, and the overall response on the evolution of tensions is informed.



\$119.4 m

### INDICATORS

# of municipalities benefitting from comprehensive support to promote social stability (participatory process; capacity building; project implementation)

# of priority municipal projects identified and implemented

# of law enforcement and security actors trained on code of conducts, guidelines

# of communities with functioning conflict prevention initiatives/mechanisms

% of LCRP partner who mainstream conflict sensitivity in their work and are informed on tension/stabilization trends



## PRIORITY INTERVENTIONS

- 1: Support municipalities to build social stability through participatory processes, capacity-building, and implementation of priority municipal service projects to alleviate resource pressure and reduce tensions.
- 2: Support the institutionalization of municipal police through the development of codes of conduct, standard operating procedures and provision of relevant trainings to security officials.
- 3: Establish community conflict mitigation mechanisms involving and training key community members in areas of high social tensions, including women and youth.
- 4: Implement youth initiatives (summer camp, artistic activities, peacebuilding clubs, community campaigns) to promote active involvement of youth in local communities.
- 5: Mainstream conflict sensitivity in the LCRP by providing regular trend analysis and training to LCRP partners.



Photo by: WFP/Sandy Maroun

# ANNEXES



# Annex 1: Lessons learned and best practices

1. **Maintaining the integrated stabilization and humanitarian approach** will ensure both dimensions of the response are supporting a wider reach of vulnerable individuals and institutions, while contributing to the overall stability of the country in a fragile context.
2. **Effective coordination and clarity on roles and responsibilities** will enhance the quality of results and services for beneficiaries, yielding more efficient use of resources and improved working relationships among partners.
3. **Joint and results-based planning** will ensure joint ownership of the response and avoid reshaping priorities and duplication of activities, emphasizing results achievement rather than mere adherence to planned activities and outputs.
4. **Joint communication and resource mobilization** as a shared responsibility, will support coherent advocacy and messaging consistently delivered by LCRP partners. This will ensure efficient and adequate communication on interventions, achievements and critical needs to fill funding gaps.
5. **Capacity development and involvement of stakeholders** will ensure that a group of informed, committed and engaged stakeholders contribute to the overall sustainability of the response.
6. **Mainstreaming** of gender, environment, youth, people with specific needs and social stability will promote inclusiveness throughout the response.
7. **Improved transparency and information-sharing** will ensure building accountability and trust among LCRP partners, and contribute to the improvement of decision-making as well as the collective efficiency and effectiveness of the response.
8. **Complementarity and convergence** will strengthen coherence and ensure the sum of partners' contributions helps to achieve the LCRP strategic results.



## Annex 2: Developing the LCRP

The LCRP formulation process started in early 2014 as part of the overarching 3RP planning process involving five affected nations.

The articulation of the strategy and formulation of the strategic priorities for Lebanon reflects a longstanding dialogue between the Government of Lebanon and the United Nations, international and national NGOs, the international donor community, and affected populations. Field-level consultations on the strategic priorities, planning assumptions and sectoral activities were held during the development and drafting process, and will continue throughout implementation.

Following endorsement of the LCRP Steering Committee in July 2015, and upon close consultation with key national and international partners, the planning for the 2016 LCRP was initiated in the third quarter of 2015.

A Joint Technical Task Force (JTF) was formed with the responsibility to lead, coordinate and oversee the 2016 planning exercise. Key responsibilities of the JTF also included technical decision making and validation of intermediary outputs. The JTF was composed of representatives from the Government of Lebanon, the United Nations, the donor community, and national and international NGOs.

Under the overall guidance of the JTF, a Core Planning Team comprised of representatives from GoL, UN and NGOs was established to draft the narrative section of the plan, provide guiding documents, and coordinate with the JTF and the sectoral steering committees/core groups in developing the sector response plans.

The 2016 planning exercise followed a periodic review and validation process by the JTF and final endorsement by the LCRP Steering Committee, allowing for participatory stakeholders' review and feedback at different milestones to ensure ownership of the plan by the different constituencies.

The Crisis Cell ministries and the Humanitarian Country Team provided strategic guidance on overarching policy issues and key planning outputs on a regular basis throughout the planning process.

# Annex 3: Commitments of the LCRP Response

**Equity in humanitarian action:** a fair distribution of assistance and financial resources based on identified needs. Ensuring equity in access to services, resources, and protection measures demonstrates the principle of humanitarian impartiality in practice. It is also essential for increasing the participation of women, men, boys and girls, and ensuring protection mechanisms that meet their needs.

**Do no harm:** understanding how assistance provided during a crisis situation impacts the wellbeing and safety of beneficiaries at the point of planning and also of delivery. The “Do No Harm” framework asks humanitarian actors to consider the interplay of aid programmes on the dynamics of fragile communities – for example: Who is receiving aid and who is not? Is the delivery programme perceived locally as equitable, impartial, and just? Does it reduce or increase the risk to beneficiaries, or others connected to them? It also provides a programming tool to mitigate potential harmful consequences of aid mechanisms on communities in fragile contexts.

**Peace and stability:** promoting the ability of individuals, households, communities, and institutions to withstand and recover from shocks and stresses while achieving transformational change. It focuses on strengthening the capacity of communities to cope with the crisis through immediate emergency interventions, by bolstering livelihoods, housing, infrastructure, and basic services; regaining productive assets; and sustaining this recovery through a functioning and peaceful socio-economic and political environment.

**Partnership:** Working in partnership increases the effectiveness of humanitarian response. Effective partnership requires attention to underlying issues of power, attitudes and styles of working, as well as identifying which partner is best placed to deliver on each of the desired outcomes. The partners would respect local laws and cultures of their areas of operations. The partners in the LCRP commit to uphold the Principles of Partnership as adopted by the Global Humanitarian Platform in 2007:

- *Equality:* mutual respect between partners irrespective of size and power
- *Transparency:* dialogue (on equal footing), with an emphasis on early consultations and early sharing of information
- *Results-oriented approach:* keep the response reality-based and action-oriented, based on effective capabilities and concrete operational capacities
- *Responsibility:* ethical obligation of partners to accomplish tasks responsibly, with integrity and in a relevant and appropriate way, and to prevent abuses
- *Complementarity:* build on our comparative advantages and complement each other’s contributions; build on local capacity and seek to overcome language and cultural barriers

**Prevention and Response to Sexual Exploitation and Abuse:** Country responses must respect and implement commitments to prevent and respond to sexual exploitation and abuse by the humanitarian community, developed under Secretary General Bulletin 2003. i.e. to develop specific strategies to prevent and respond to sexual exploitation and abuse; to incorporate standards on sexual exploitation and abuse in induction materials and training courses for personnel; to ensure that complaint mechanisms for reporting sexual exploitation and abuse are accessible and that focal points for receiving complaints understand how to discharge their duties, and ; to regularly inform personnel and communities on measures taken to prevent and respond to sexual exploitation and abuse.



# Annex 4: Planning figures

Category	Cohorts	Projected Population 2016						
		Total	% Female	# Female	% Male	# Male	% Children	# Children
Total population cohorts	Lebanese population	4,035,042	%49.7	2,006,425	%50.3	2,028,113	%31.2	1,256,916
	Displaced Syrian	1,500,000	%52.1	781,368	%47.9	718,632	%53.1	795,817
	Palestine refugees from Syria (PRS)	42,189	%50.5	21,305	%49.5	20,884	%38.1	16,082
	Palestine Refugees in Lebanon (PRL)	277,985	%50.5	140,382	%49.5	137,603	%38.1	105,968
	Lebanese returnees	35,000	%49.7	17,404	%50.3	17,592	%31.2	10,903
	<b>Total population living in Lebanon</b>	<b>5,890,216</b>	<b>%50.4</b>	<b>2,966,885</b>	<b>%49.6</b>	<b>2,922,823</b>	<b>%37.1</b>	<b>2,185,685</b>
Total poor	Lebanese living under poverty line (\$3.84/day)	1,500,000	%49.7	745,875	%50.3	753,938	%31.2	467,250
	Displaced Syrians living under Minimum Expenditure Level (\$3.80/day) - %70	1,050,000	%52.1	546,958	%47.9	503,042	%53.1	557,072
	Palestine Refugees from Syria (PRS) (%89 of caseload – AUB data)	42,189	%50.5	21,305	%49.5	20,884	%38.1	16,082
	Palestine Refugees in Lebanon living under poverty line (%66 of caseload – AUB data)	183,470	%50.5	92,652	%49.5	90,818	%38.1	69,939
	<b>Total poor</b>	<b>2,775,659</b>	<b>%50.7</b>	<b>1,406,791</b>	<b>%49.3</b>	<b>1,368,681</b>	<b>%40.0</b>	<b>1,110,343</b>
Total People in Need: economically, socially and legally vulnerable	Vulnerable Lebanese	1,500,000	%49.7	745,875	%50.3	753,938	%31.2	467,250
	Displaced Syrians	1,500,000	%52.1	781,368	%47.9	718,632	%53.1	795,817
	Palestine Refugees from Syria (PRS)	42,189	%50.5	21,305	%49.5	20,884	%38.1	16,082
	Palestine Refugees in Lebanon (PRL)	277,985	%50.5	140,382	%49.5	137,603	%38.1	105,968
	<b>Total people in need</b>	<b>3,320,174</b>	<b>%50.9</b>	<b>1,688,931</b>	<b>%49.1</b>	<b>1,631,055</b>	<b>%42.0</b>	<b>1,385,117</b>
Targeted protection and direct assistance	Vulnerable Lebanese	300,000	%49.7	149,175	%50.3	150,788	%31.2	127,680
	Displaced Syrians	1,500,000	%52.1	781,368	%47.9	718,632	%53.1	808,500
	Palestine Refugees from Syria (PRS)	42,189	%50.5	21,305	%49.5	20,884	%38.1	127,680
	Palestine Refugees in Lebanon (PRL)	75,000	%50.5	37,875	%49.5	37,125	%38.1	127,680
	<b>Total target: protection and assistance</b>	<b>1,917,189</b>	<b>%51.6</b>	<b>989,724</b>	<b>%48.4</b>	<b>927,428</b>	<b>%62.2</b>	<b>1,191,540</b>
Targeted service delivery, economic recovery and social stability	Vulnerable Lebanese	1,200,000	%49.7	596,700	%50.3	603,150	%31.2	540,360
	Syrians displaced	840,000	%52.1	437,566	%47.9	402,434	%53.1	695,310
	Palestine refugees from Syria (PRS)	42,189	%50.5	21,305	%49.5	20,884	%38.1	16,082
	Palestine Refugees in Lebanon (PRL)	20,000	%50.5	10,100	%49.5	9,900	%38.1	7,624
	<b>Total target: service delivery, economic recovery and community services</b>	<b>2,102,189</b>	<b>%50.7</b>	<b>1,065,672</b>	<b>%49.3</b>	<b>1,036,367</b>	<b>%59.9</b>	<b>1,259,376</b>
Total targeted population	Vulnerable Lebanese	1,200,000	%49.7	596,700	%50.3	603,150	%31.2	373,800
	Syrians displaced	1,500,000	%52.1	781,368	%47.9	718,632	%53.1	795,817
	Palestine refugees from Syria (PRS)	42,189	%50.5	21,305	%49.5	20,884	%38.1	16,082
	Palestine Refugees in Lebanon (PRL)	75,000	%50.5	37,875	%49.5	37,125	%38.1	28,590
	<b>Total target</b>	<b>2,817,189</b>	<b>%51.0</b>	<b>1,437,249</b>	<b>%49.0</b>	<b>1,379,790</b>	<b>%43.1</b>	<b>1,214,289</b>

