

© UNHCR/ R. Alkoukou,

Hama: Rehabilitation of damaged houses for returnees.

UNHCR in coordination with SSSD organized a vocational training on how to manufacture doors and windows in Hama. One of the trainees is installing a door for a returnee family in Souran village, north of Rural Hama.

## MAJOR HIGHLIGHTS

- The TWG formed by the shelter sector has successfully accomplished its task of revising the sector strategy and 4 sector guidelines. The revised strategy and guidelines have been translated into Arabic and shared with MoLAE for their review.
- The shelter sector partners continue to respond to Afrin emergency. So far, Shelter sector partners have installed 558 Shelter kits that benefited 7,735 individuals in Nubul and Tal Refaat areas, where IDP families are sheltering in public buildings and empty houses.
- IDP sites which have been used to accommodate displace people from Eastern Ghouta for months, are witnessing gradual reduction in number of IDPs. Up to the end of June, total number of IDPs in these sites was 16,335, with an average occupation rate of 83%.
- The shelter sector partners have been responding to the shelter needs of IDPs living in Jbab IDP sites. The Shelter Sector mapped out the stock of shelter items available with partners and the available shelter items can meet the need of over 67,000 people.
- UNHCR together with its implementing partner PUI visited Jabal Alnoubah, Ghimam, and Maysaloun in Northern Rural Latakia where they collected information that will help to prioritise the returnee families for shelter assistance based on vulnerability criteria.
- Shelter sector IM team regularly follows up with the sector partners who use ActivityInfo for reporting their shelter activities in order to understand the issues these partners face and to provide technical support. This will also help to improve ActivityInfo tool for future usage. In addition, Sector IM updated the 4W templates with the list of updated communities.

## OVERALL FIGURES



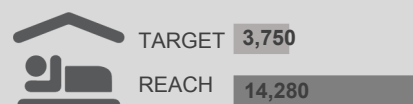
Total no. of people covered with emergency and durable shelter support in Syria as of June 2018

TARGET 864,296

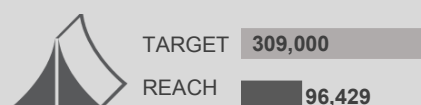
REACH 145,350

NUMBER OF PEOPLE COVERED WITH VARIOUS SHELTER SUPPORTS

### SEASONAL SHELTER PROVISION



### EMERGENCY SHELTER PROVISION



### EMERGENCY SHELTER REHABILITATION



### DURABLE SHELTER SUPPORT





## GAPS AND CHALLENGES

- Access and safety are the key challenges in some parts of the country as well as partner capacity and heavy processes along with funding constraints;
- Increasing needs, diminishing coping capacities of both the IDPs and host communities, and limited financial resources of the government to provide shelter compensation require sector partners to scale up operational presence;
- Shelter and infrastructure needs are huge and the Shelter Sector partners collectively do not have capacity to meet all the needs;
- Issues related to the loss of occupancy documents deprived some population from accessing shelter supports;
- Opportunities for systematic field-based data collection remain very limited due to access or authorization restrictions, resulting in incomplete needs analysis in some areas.

**CRISIS BACKGROUND:** The crisis in Syrian Arab Republic that started in March 2011 has transformed into a complex emergency that has displaced around 6.1 million people in various parts of the country. As per the 2018 Humanitarian Needs Overview, around 13.1 million people are in need of humanitarian assistance of which around 4.2 million people are in need of shelter support and other multi-sectorial assistance as they continue to struggle in an unsafe and uncertain environment. Due to the protracted nature of the hostilities, many of both displaced and host communities become more vulnerable and their ability to cope and find safe and durable shelter solutions have been greatly affected. The humanitarian community has been challenged to both provide emergency and life-saving shelter solutions while building back community cohesion and resilience through provision of adequate shelter assistance.

### Shelter Sector Coordination Team

Pankaj Kumar Singh, Shelter Sector Coordinator ([singhpa@unhcr.org](mailto:singhpa@unhcr.org))  
 Bareaa Alkafre, Asst. Sector Officer ([alkafre@unhcr.org](mailto:alkafre@unhcr.org))  
 Muhammad Shazad, IM Officer ([shahzadm@unhcr.org](mailto:shahzadm@unhcr.org))  
 Maha Shaaban, IM Associate ([shabanm@unhcr.org](mailto:shabanm@unhcr.org))  
 Ashraf Zedane, IM Associate - Aleppo ([zedane@unhcr.org](mailto:zedane@unhcr.org))



## PARTNER IN FOCUS



The Monastery of Saint James the Mutilated (MSJM) goes back to the 6th century and is located in Qâra, 97 km north of Damascus and 15 km east of Nebek. The Community is Greek Melkite Catholic and is international with members from 8 nationalities. MSJM is committed to assist the most vulnerable communities to rebuild their lives. Since 2013 and until today, MSJM has been operating progressively in all the governorates. MSJM has 1000 employees inside Syria and more than 2,000 volunteers who are working together to achieve the organizational goal. MSJM's Head Quarters are located in Damascus.

MSJM has been providing humanitarian support through private donations even before it became a partner of the Shelter sector. In 2017 MSJM rehabilitated 53 apartments in Hanano community in Aleppo Governorate. In 2018, MSJM is planning to rehabilitation 102 apartments in Aleppo. While In partnership with UNHCR MSJM is working on rehabilitation of 200 apartments in Lattakia Governorate.

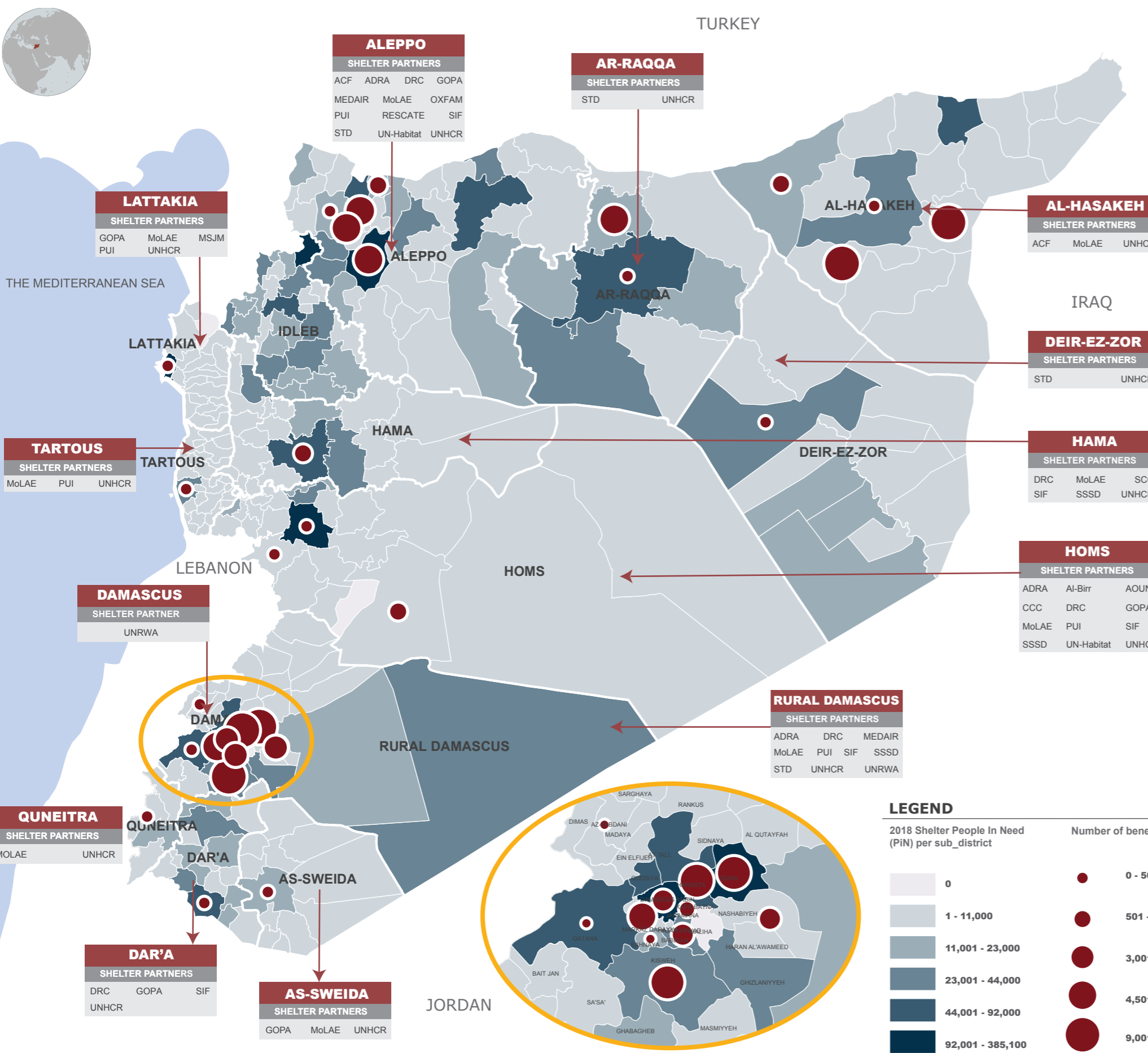
MSJM works in partnership with OCHA, UNHCR, UNICEF, IOM, UNFPA, DORCAS International, CORDAID International, Hungarian Knights of Malta, Caritas Toledo, Entr'aide Internationale des Scouts de Cluses, SOS Villages Syria, Preemptive Love, LDS CHARITIES, and Partners for Development and other NGO's.

MSJM website: <https://www.maryakub.net/>



# SYRIA: SHELTER SECTOR RESPONSE SNAPSHOT

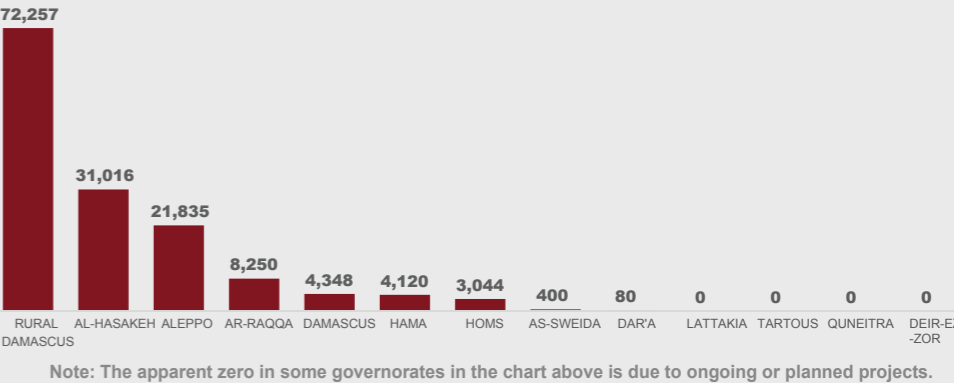
Reporting Period: January - June 2018



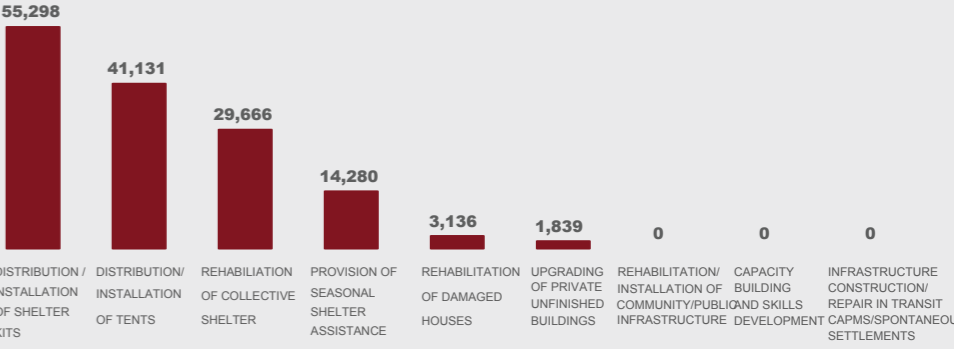
## TOTAL BENEFICIARIES COVERED

4.2 M OVERALL PEOPLE IN NEED (PIN)  
1.4 M TARGETED PIN / HRP 2018  
**145,350**   
17% OF 864,296 TARGETED PIN (IN SHELTER) BY SYRIA HUB

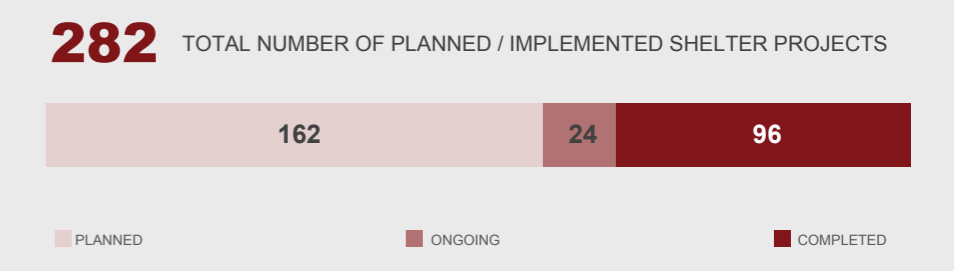
## BENEFICIARIES COVERED PER GOVERNORATE



## BENEFICIARIES COVERED BY TYPE OF SUPPORT



## NO. OF SHELTER PROJECTS PER STAGE



## SHELTER SECTOR PARTNERS

CO-LEAD AGENCIES			
ACF	ADRA	Al-Birr	AL Ihsan
AI Taalouf	AOUN	CCC	DRC
GOPA	IOM	MEDAIR	MSJM
NRC	OXFAM	PUI	RESCATE
RSRP	SARC	SCC	SIF
SSSD	STD	UN-Habitat	UNRWA

