

Rural Damascus: Displaced population living in improper shelter conditions

Displaced populations from East Ghouta live in eight different IDP sites across Rural Damascus in overcrowded and inadequate shelters. Sector partners continue to provide basic shelter support such as installation of tents and shelter kits.

© UNHCR/D. Kabalan

MAJOR HIGHLIGHTS

1. East Ghouta Response Plan and Afrin Operation Plan were revised based on the inputs from the sector partners. The Shelter Sector partners have been responding to the shelter needs of people displaced from Eastern Ghouta and Afrin. The situation and response updates are as follows:

Eastern Ghouta:

- The second half of March witnessed massive displacements. The number of displaced persons increased rapidly and reached over 80,000 people by the end of the month.
- 8 IDP sites that are located in Rural Damascus Governorate host displaced population. Most of the sites are educational complexes that can accommodate approximately a total of 17,235 individuals. By the end of March, occupancy rate in these sites/collective shelters was more than 200% with a total 43,543 individuals living in these IDP sites.
- Shelter sector partners have been responding to the shelter needs of IDPs living in these sites through implementation of different shelter interventions that include repair/upgrade/light rehabilitation of existing buildings, installation of tents and rubble halls, and construction of emergency rooms.
- Moreover, the shelter partners conducted preliminary assessment of two new sites (Karnak Transportation Company and Herjelleh 1) for planning and implementation of shelter and associated infrastructure works.

Afrin Highlights:

- Since January 2018, more than 137,000 people have been displaced from Afrin to Fafin, Nabul, Tall Refaat, Zahraa, and surrounding villages.
- IDPs live in collective shelters (schools and mosques) and empty houses. Collective shelters and empty houses are in need of repairing and upgrading. Shelter responses in empty houses should consider potential housing, land, and property issues.
- Shelter sector partners have been providing shelter assistance through provision and installation of shelter kits.

OVERALL FIGURES



Total no. of people covered with emergency and durable shelter support in Syria as of March 2018

TARGET 864,296

REACH 27,225

NUMBER OF PEOPLE COVERED WITH VARIOUS SHELTER SUPPORTS

SEASONAL SHELTER PROVISION



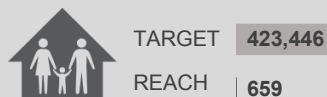
EMERGENCY SHELTER PROVISION



EMERGENCY SHELTER REHABILITATION



DURABLE SHELTER SUPPORT





Major Highlights *cont...*

2. The Assistant Shelter Officer of the sector attended the Training of Trainers for Gender-Based Violence Mainstreaming that took place in Beirut at the beginning of March 2018. The Shelter Sector is planning to re-echo this training for all shelter sector partners in the various field locations covered by Syria hub.
3. The revised Shelter Sector strategy both in English and Arabic has been shared with MoLAE for review and comments. The guidelines on the Rehabilitation of Damaged Houses is being translated into Arabic and once the translation is completed and reviewed by the sector, it will be shared with MoLAE for review and comments. Furthermore, the revision of other sector guidelines continues.

GAPS AND CHALLENGES

- Lack of shelter materials and manpower as well as security issues have posed challenges to the speedy shelter rehabilitation in some locations that have witnessed high level of destruction (i.e. Deir ez-Zor);
- Access and safety are the key challenges in some parts of the country as well as partner capacity and heavy processes along with funding constraints;
- Increasing needs, diminishing coping capacities of both the IDPs and host communities, and limited financial resources of the government to provide shelter compensation require sector partners to scale up operational presence;
- Shelter and infrastructure needs are huge and the Shelter Sector partners collectively do not have capacity to meet all the needs;
- Issues related to the loss of occupancy documents deprived some population from accessing durable shelter supports;
- Opportunities for systematic field-based data collection remain very limited due to access or authorization restrictions, resulting in incomplete needs analysis in some areas.

CRISIS BACKGROUND: The crisis in Syrian Arab Republic that started in March 2011 has transformed into a complex emergency that has displaced around 6.1 million people in various parts of the country. As per the 2018 Humanitarian Needs Overview, around 13.1 million people are in need of humanitarian assistance of which around 4.2 million people are in need of shelter support and other multi-sectorial assistance as they continue to struggle in an unsafe and uncertain environment. Due to the protracted nature of the hostilities, many of both displaced and host communities become more vulnerable and their ability to cope and find safe and durable shelter solutions have been greatly affected. The humanitarian community has been challenged to both provide emergency and life-saving shelter solutions while building back community cohesion and resilience through provision of adequate shelter assistance.



PARTNER IN FOCUS



NORWEGIAN REFUGEE COUNCIL

Norwegian Refugee Council (NRC) is a non-governmental international organization working to support people affected by forced displacement since 1946, and currently operating in 31 countries, helping every year millions of people worldwide.

NRC has been working in Syria since late 2015 with the aim to provide people with education and learning, food security and livelihood, public infrastructures, WASH, and shelter as well as legal aid programming in Aleppo, Damascus, Dara'a, Rural Damascus and Sweida governorates.

NRC is among the active partners of the Shelter Sector. In 2016, NRC implemented shelter rehabilitation project of Zaid Bin Haritha collective Shelter in Masaken Barzeh in Damascus governorate in close partnership with the Syria Trust for Development. The shelter support included partitioning, painting, electrical works, provision of solar water heating system, and other water and sanitation related works. NRC is also part of the Technical Working Groups of the sector and has been instrumental in revising the strategy and different guidelines of the sector.

NRC has an ongoing cooperation with the Government of the Syrian Arab Republic, Syria Trust for Development, and other NGOs and UN concerned entities in line with their respective mandate and expertise. Based in Damascus, it has a total of 95 (86 of them national) staff members to date.

NRC website: <https://www.nrc.no/countries/middle-east/syria/>

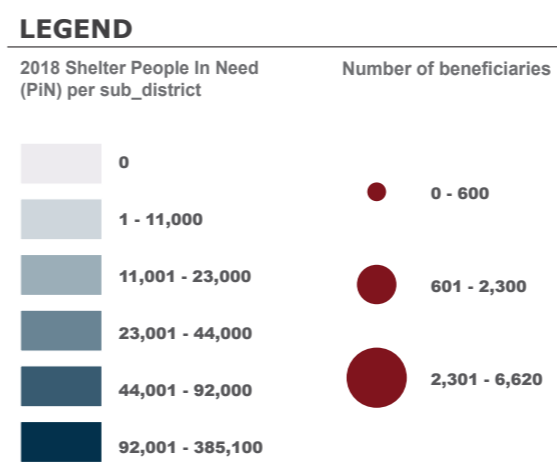
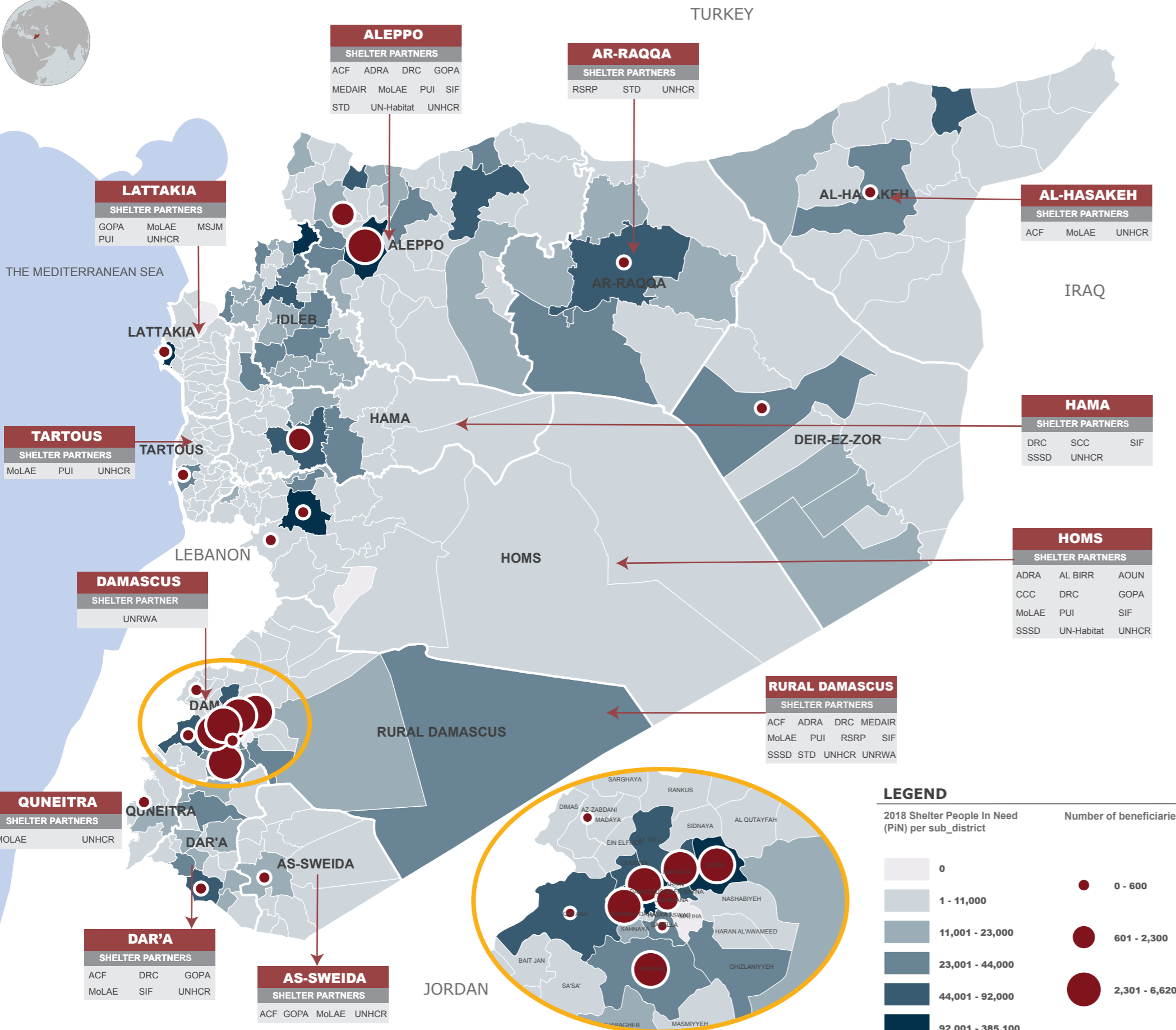
Shelter Sector Coordination Team

Pankaj Kumar Singh, Shelter Sector Coordinator (singhpa@unhcr.org)
Bareaa Alkafre, Asst. Sector Officer (alkafre@unhcr.org)
Muhammad Shazad, IM Officer (shahzadm@unhcr.org)
Corazon C. Lagamayo, IM Officer (lagamayo@unhcr.org)
Maha Shaaban, IM Associate (shabanm@unhcr.org)

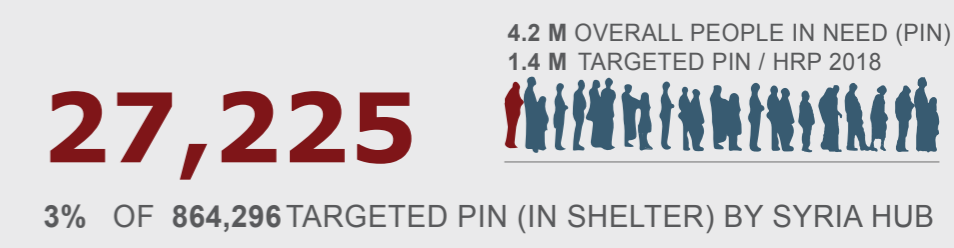


SYRIA: SHELTER SECTOR RESPONSE SNAPSHOT

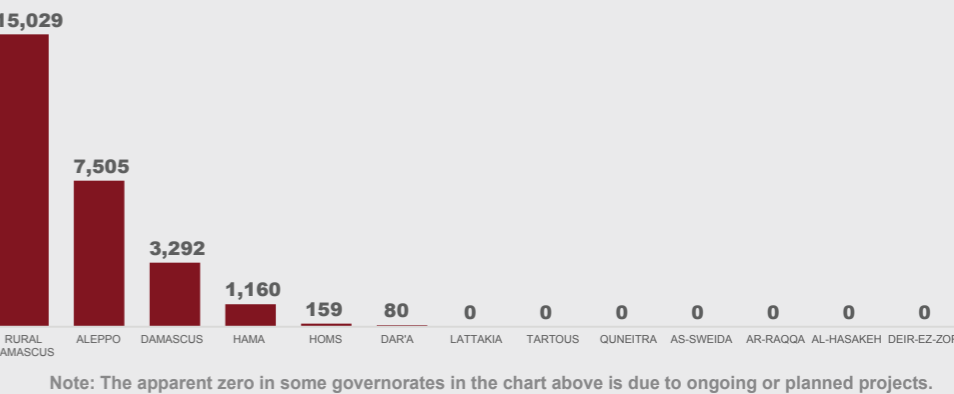
Reporting Period: January - March 2018



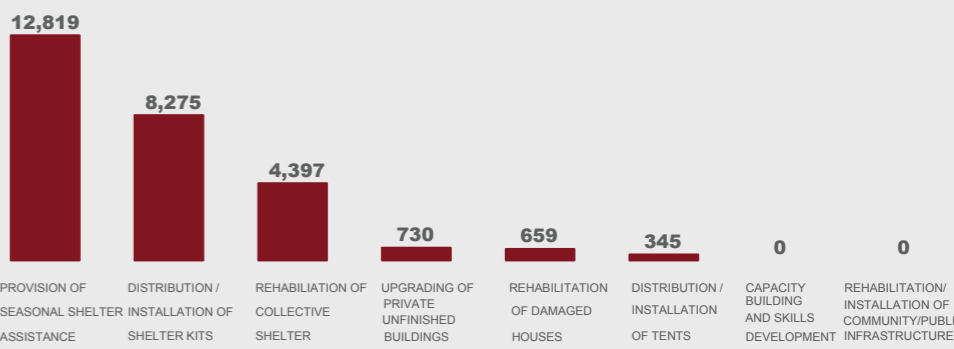
TOTAL BENEFICIARIES COVERED



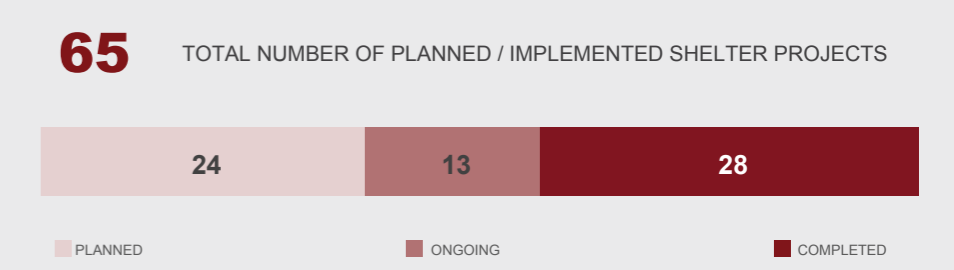
BENEFICIARIES COVERED PER GOVERNORATE



BENEFICIARIES COVERED BY TYPE OF SUPPORT



NO. OF SHELTER PROJECTS PER STAGE



SHELTER SECTOR PARTNERS

CO-LEAD AGENCIES

ACF	ADRA	AL BIRR	AL Ihsan
AI Taalouf	AOUN	CCC	DRC
GOPA	IOM	MEDAIR	NRC
OXFAM	PUI	RESCATE	RSRP
SARC	SCC	SIF	SSSD
STD	UN-Habitat	UNRWA	