



Aleppo: Sector partners scale up winterization support especially to returning population.

As the weather gets colder, more people are seeking warm clothes and blankets. This couple, who returned home after two years in Lebanon, is among the beneficiaries assisted by UNHCR through SARC in Jaroud village in east Aleppo.

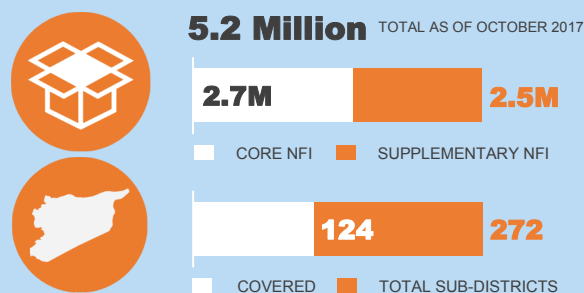
© UNHCR Syria / A. Chnkdji

KEY POINTS

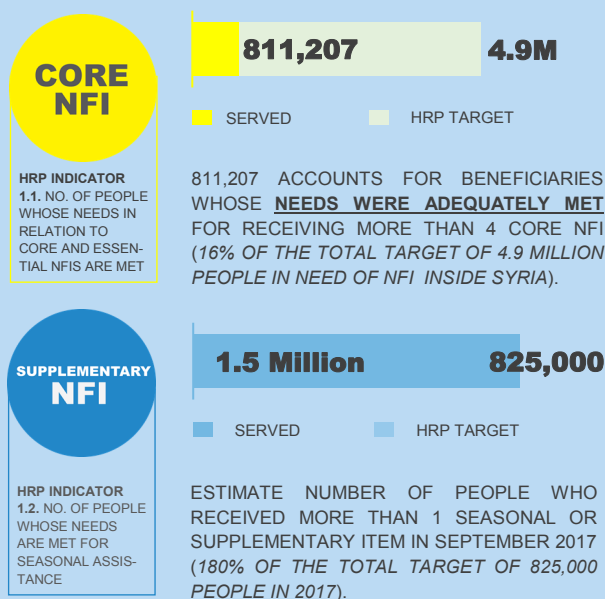
- Sector partners continue to provide emergency support to the displaced population in Deir ez-Zor who fled their homes due to the ongoing military offensive against ISIL. In October, IOM and UNHCR in partnership with Al Birr, IRD and SARC collectively assisted around 102,000 displaced persons in Areesh, Deir ez-Zor, Hole, and Mabruka communities. Beneficiaries received both core items and supplementary items.
- Winterization support of the sector has continued to scale up in October. Around 200,000 displaced persons were assisted with basic winter items such as carpet, plastic sheets, quilt or high thermal blankets, sleeping bags and mats, and winter clothing. Most of the beneficiaries are located in Aleppo, Hama, and Rural Damascus governorates.
- The call for project proposals for the Syria Humanitarian Fund appeal was completed. Ten (10) sector partners submitted projects that focus on the provision of emergency core and supplementary NFIs to around 4.4 million most vulnerable individuals.

NUMBERS IN BRIEF

TOTAL NFI DISTRIBUTED



BENEFICIARIES ADEQUATELY SERVED



OVERALL REACHED BENEFICIARIES



GAPS AND CHALLENGES

- Widespread insecurity, challenging physical access and rigorous bureaucratic procedures and approval limit provision of adequate and regular humanitarian assistance especially to those who live in besieged and hard-to-reach areas;
- Absence of age and gender disaggregated information of population in need unable the sector to accommodate and target specific needs;
- Logistical constraints especially during inter-agency convoy such as road blockage, presence of checkpoints, presence of threats, and proximity to active front lines (i.e. Ar Raqqa) continue to hamper rapid distribution,;
- Lack of actual data on distribution recipients prevent the sector to better measure the actual reached and served beneficiaries;
- Limited and irregular monitoring of distribution due to insecurity and sensitivities compromise the ability of the sector to assess the impact of its assistance and better inform future planning;
- Absence of clear and effective feedback mechanism from population in need due to information gathering sensitivities unable the sector to better determine the efficacy of its effort;
- Lack of income-generating activities to provide the necessary financial means continues to hamper access to basic household items among the most vulnerable population in need;
- Diminishing active participation among sector members affects coordination and the overall sectorial reach;
- Inexact coordination structure impacts the level of efficiency in coordinating sectorial response for interagency convoys.
- Lack of reliable consolidated information for interagency convoy reach affects the sector's ability to determine the extent and impact of its convoy contribution;
- Insufficient number of detailed and comprehensive assessment makes it difficult for the sector to shift its response priorities from distribution of basic essential NFI items to provision of supplementary items.
- Decreasing number of local NGOs authorized to partner with UN agencies particularly in severely affected areas limit the extent of humanitarian response (i.e. Ar Raqqa).
- Lack of adherence to agreed distribution standards (i.e. UNHCR solar lamps) affects the quality of NFI response (i.e. Lattakia and Mashta'a Al-Helou).

CRISIS BACKGROUND: *The crisis in the Syrian Arab Republic that started in March 2011 has transformed into a complex emergency that led to 6.3 million IDPs and 4.8 million Syrian refugees. The 2017 Humanitarian Needs Overview reported that around 13.5 million people are in need of humanitarian assistance of which around 5.8 million people need to receive essential household items and other multi-sectorial assistance as they continue to live in an unsafe and uncertain environment. The degree of resilience and positive coping mechanism of the affected population have gradually reduced due to the protracted nature of the hostilities. Purchasing power and the ability to provide for their basic household needs have decreased due to economic recession that left many people unemployed and the prospect of accessing essential household items has also declined due to closure of essential service providers.*



PARTNER IN FOCUS

Aoun is part of the Islamic Charity Association which was established in 1921 as an orphanage to accommodate the affected children of the First World War. The Association later expanded to host other orphans in the city of Homs and its countryside. It has a number of service projects that were implemented to serve the orphans as well as the most vulnerable children in Homs. These projects include charity schools, charity kitchen, charity sewing workshop, and a conference and celebration hall. The Association has 100 permanent employees in various departments, in addition to 950 male and female volunteers working on temporary projects with international organizations for a limited period.

The Aoun Committee began its relief and development work in early 2012 after the displacement movement from nine neighborhoods in Homs governorate as a result of the current crisis. Since then, Aoun has been operating in all neighborhoods of the province of Homs and its countryside. It has been providing basic non-food items to the displaced people throughout Homs governorate.

Aoun is among the active partners of the NFI Sector. In 2016, it reported around 35,000 people who benefitted from in-kind distribution and voucher program. As of October 2017, around 33,000 people were assisted with both core and supplementary items. All of these interventions are in close partnership with the ICRC, IOM, SARC, UNICEF, and UNHCR.

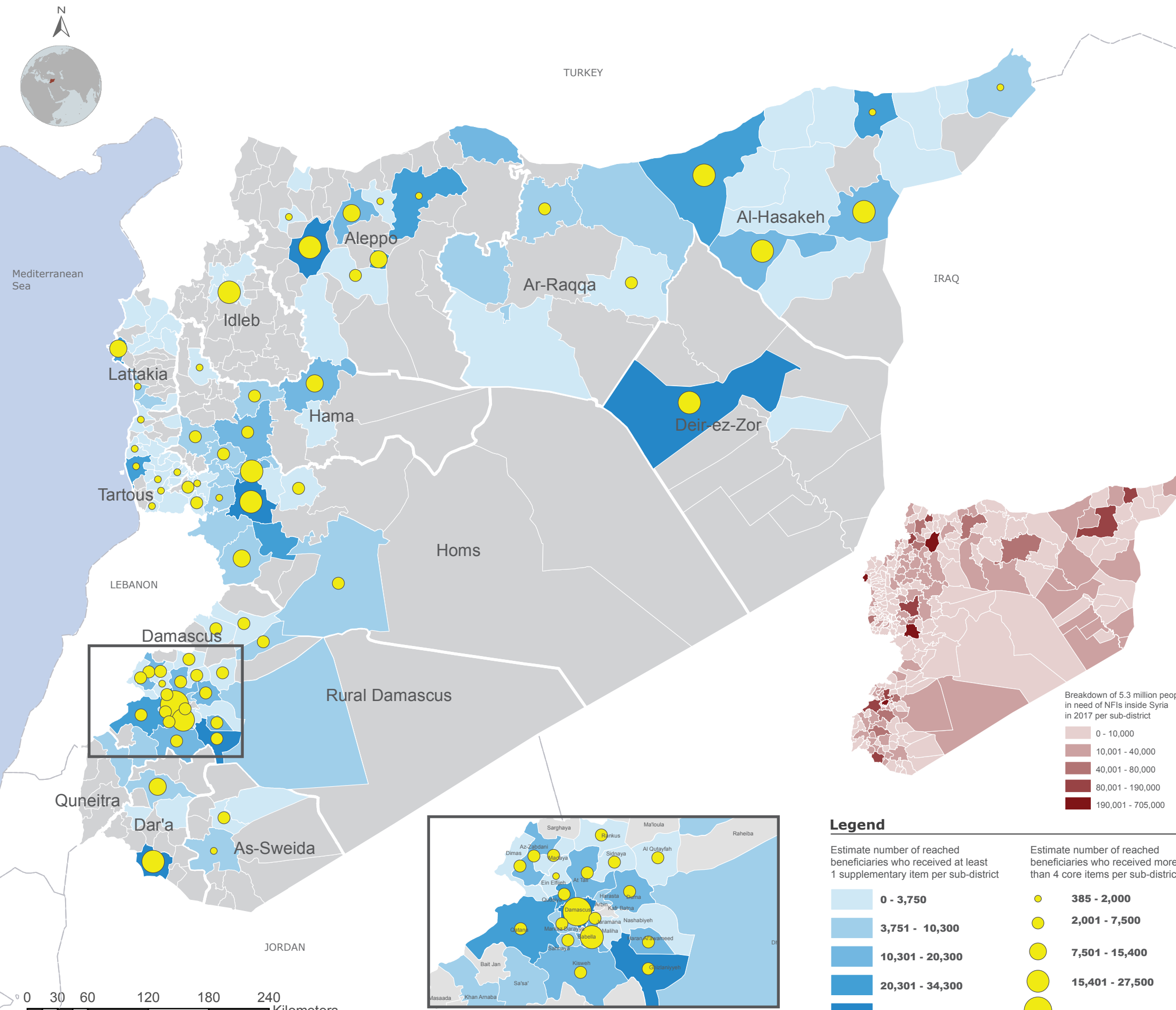
NFI Sector Coordination Team

Joel Andersson, Senior NFI Sector Coordinator (anderssj@unhcr.org)
 Zina Alkhiami, NFI Sector Field Associate (alkhiami@unhcr.org)
 Muhammad Shahzad, IM Officer (shahzadm@unhcr.org)
 Corazon C. Lagamayo, IM Officer (lagamayo@unhcr.org)
 Maha Shaban, IM Associate (shabanm@unhcr.org)
 Ashraf Zedane, IM Associate - Aleppo (zedane@unhcr.org)



SYRIA: NFI RESPONSE

Reporting Period: October 2017



BENEFICIARIES ASSISTED

CORE ITEMS

811,207

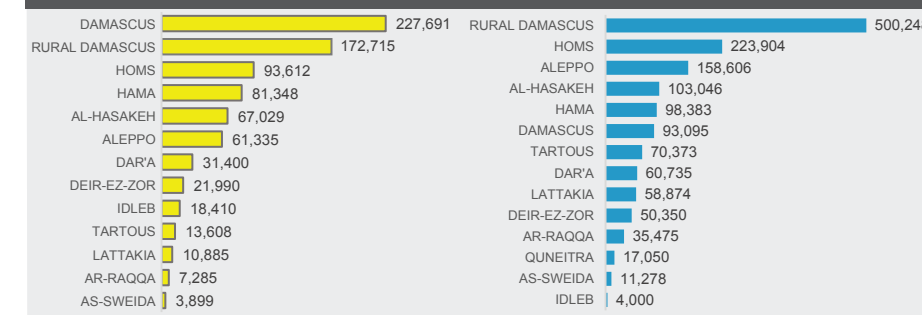
PEOPLE WHOSE NEEDS WERE ADEQUATELY MET FOR RECEIVING MORE THAN 4 CORE NFI (16% OF THE 4.9M TOTAL TARGET PEOPLE IN NEED OF NFI IN SYRIA)

SUPPLEMENTARY ITEMS

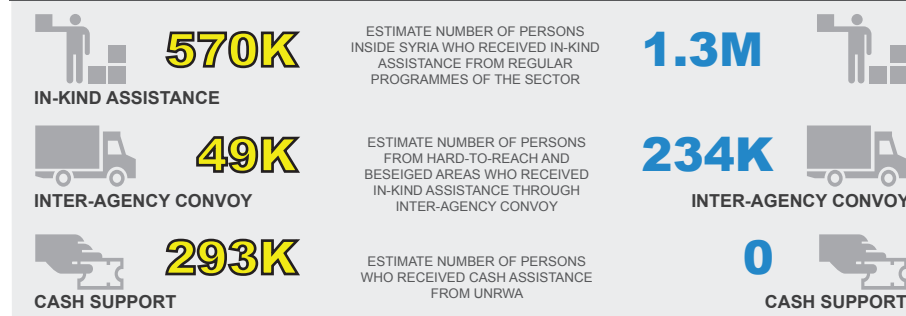
1,485,418

PEOPLE WHO RECEIVED AT LEAST 1 SUPPLEMENTARY ITEM (180% OF THE 825,000 TOTAL TARGET PEOPLE IN NEED OF SUPPLEMENTARY NFI IN SYRIA)

BENEFICIARIES ASSISTED PER GOVERNORATE

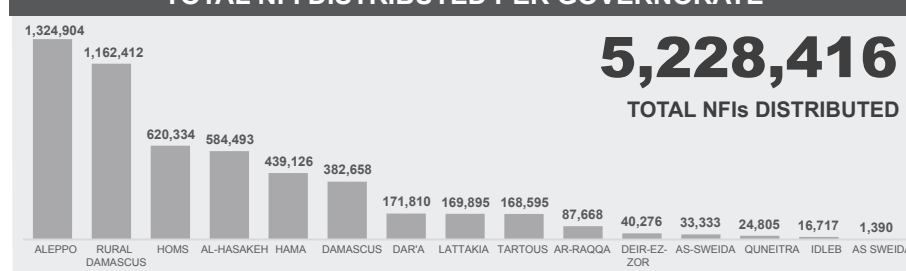


BENEFICIARIES ASSISTED BY TYPE OF SUPPORT



NOTE: Breakdown of beneficiaries per type of support does not necessarily sum up to the reported number of beneficiaries as some communities may have received more than one type of assistance.

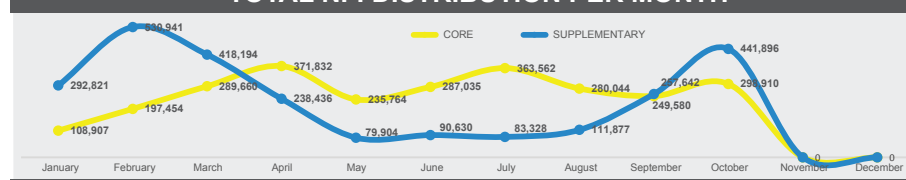
TOTAL NFI DISTRIBUTED PER GOVERNORATE



TOTAL NFI DISTRIBUTED PER TYPE



TOTAL NFI DISTRIBUTION PER MONTH



TOTAL BENEFICIARIES REACHED

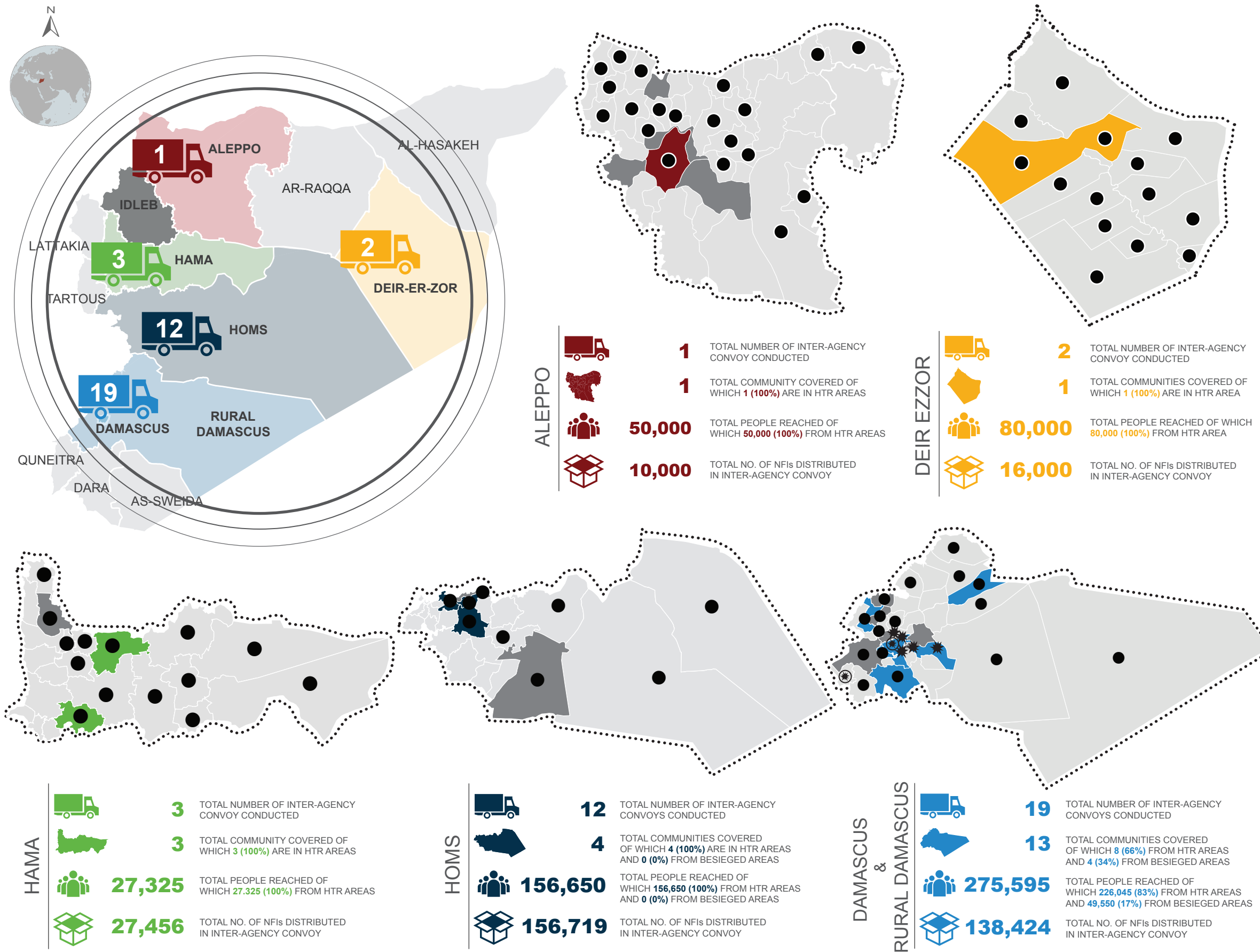
6,124,391

 TOTAL NUMBER OF PEOPLE WHO RECEIVED AT LEAST ONE / PART OF NON-FOOD ITEM AS OF OCTOBER 2017

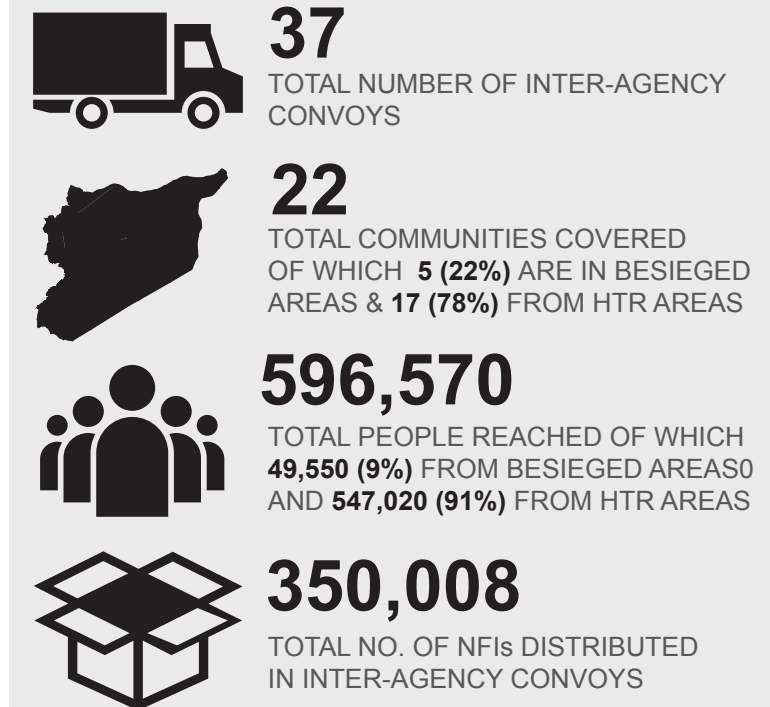


SYRIA: INTER-AGENCY CONVOY

Reporting Period: October 2017



SUMMARY



NAME OF BESIEGED AND HTR COMMUNITIES COVERED BY INTER-AGENCY CONVOY (2016-2017)

GOVERNORATE	HARD-TO-REACH COMMUNITIES	BESIEGED COMMUNITIES
ALEPPO	● AFRIN ● ALEPPO CITY ● HAJEB ● NABUL ● TALL REFAAT	
DEIR EZZOR	● DEIR EZZOR	
HAMA	● HARBANIFSE	
HOMS	● AR-RASTAN ● DAR KABIRA ● KAFR LAHA ● TALBISEH ● TALDU ● TIR MAALAH	
RURAL DAMASCUS	● AZ-ZABADANI ● BABELLA ● DARRAYA ● JIRUD ● KHAN ELSHIH ● MADAMIYET ELSHAM ● QUDSIYA ● SARGHAYA ● SUQ WADI BARDA ● YALDA ● ZAKYEH	★ ARBIN ★ BEIT SAWA ★ DUMA ★ EIN TERMA ★ HAMMURA ★ HARASTA ★ HEZZEH ★ JISREIN ★ KAFR BATNA ★ MADAYA ★ NASHABIYEH ★ SAGBA
DAMASCUS		★ YARMUK

LEGEND

- No. of inter-agency convoys (IACs)
- No. of beneficiaries (persons) reached by IACs
- Sub-districts with besieged communities
- Sub-districts with (HTR) hard-to-reach communities
- Sub-districts with besieged and HTR communities
- No. of distributed non-food items
- Areas covered by convoy in 2016

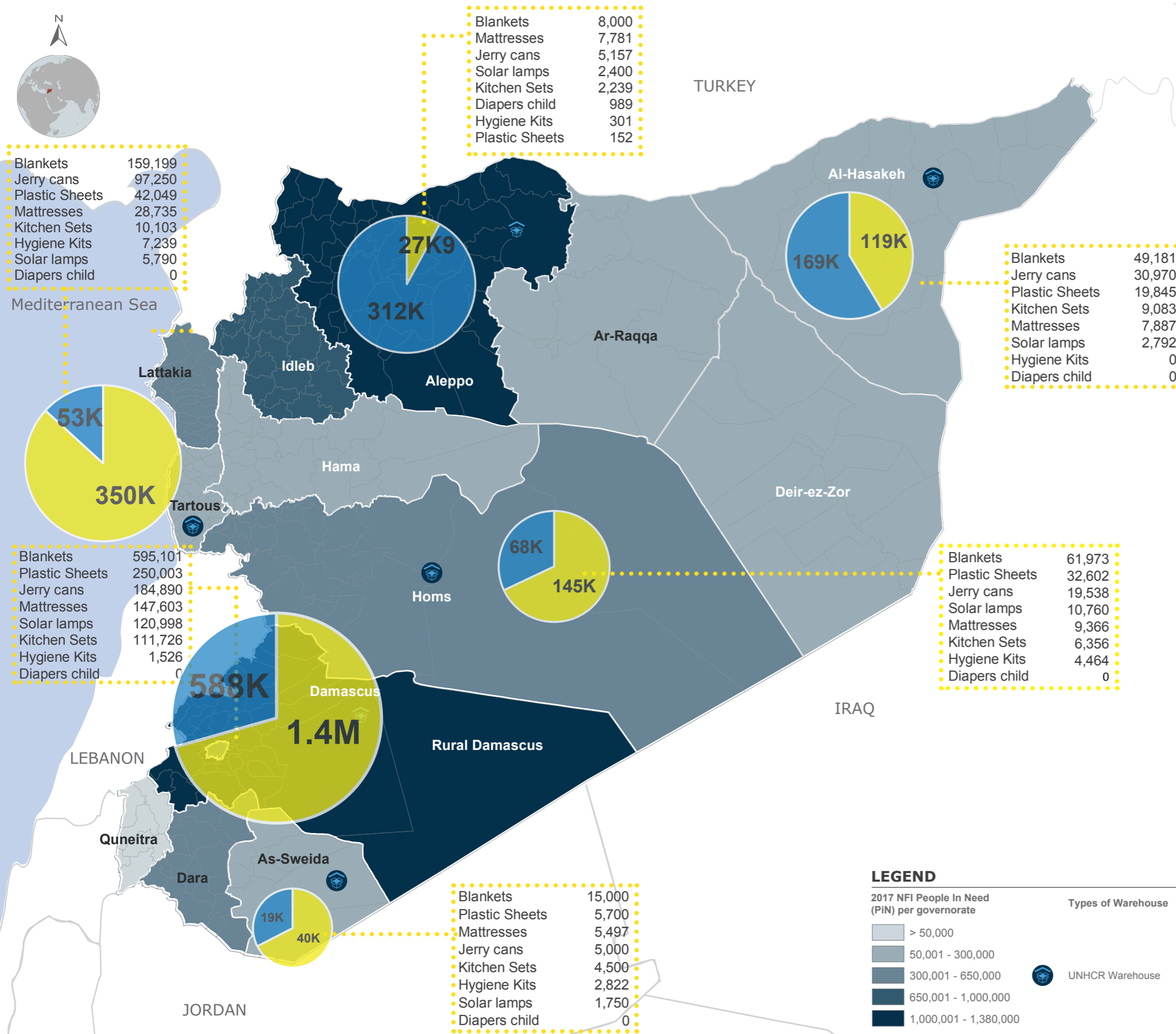
FOOTNOTE/S:

- A. The information presented here only shows DRC, IOM, UNHCR and UNICEF convoys.
- B. One convoy is counted as one completed trip.



SYRIA: NFI STOCKPILE

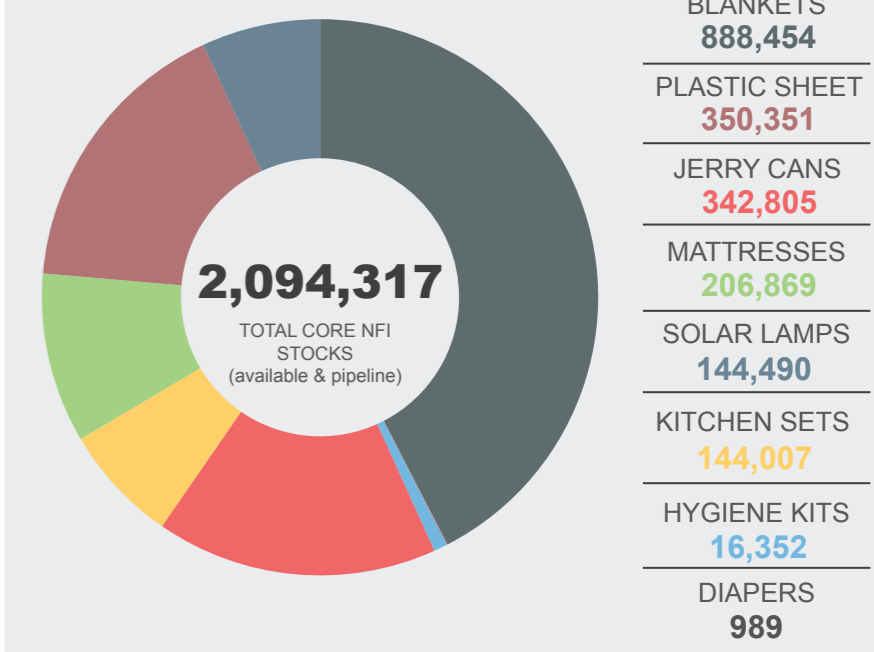
Reporting Period: November 2017



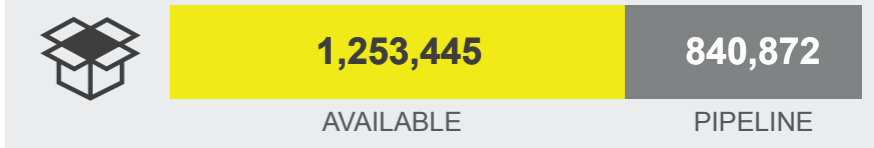
3,306,306 TOTAL CORE AND SUPPLEMENTARY NFI STOCKS AS OF NOVEMBER 2017

CORE NON-FOOD ITEMS

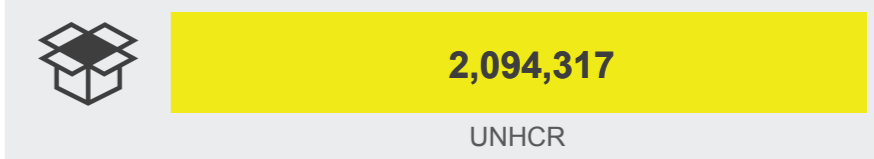
BREAKDOWN OF CORE NFI STOCKS PER TYPE



BREAKDOWN OF CORE NFI STOCKS PER STATUS



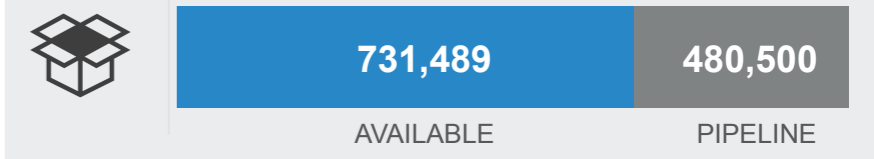
BREAKDOWN OF CORE NFI STOCKS PER AGENCY



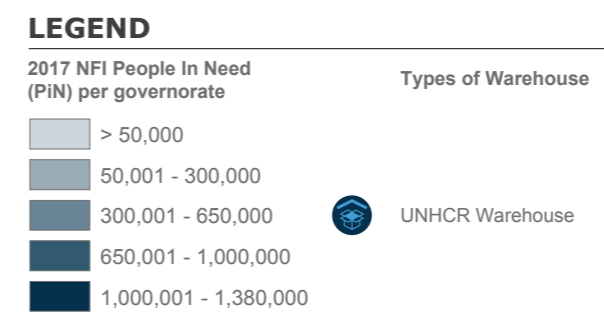
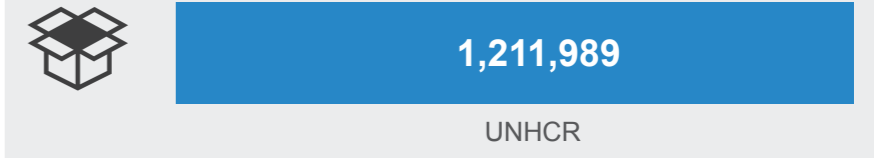
SUPPLEMENTARY NON-FOOD ITEMS

1,211,989 TOTAL SUPPLEMENTARY NFI (available and pipeline)

BREAKDOWN OF SUPPLEMENTARY NFI STOCKS PER STATUS



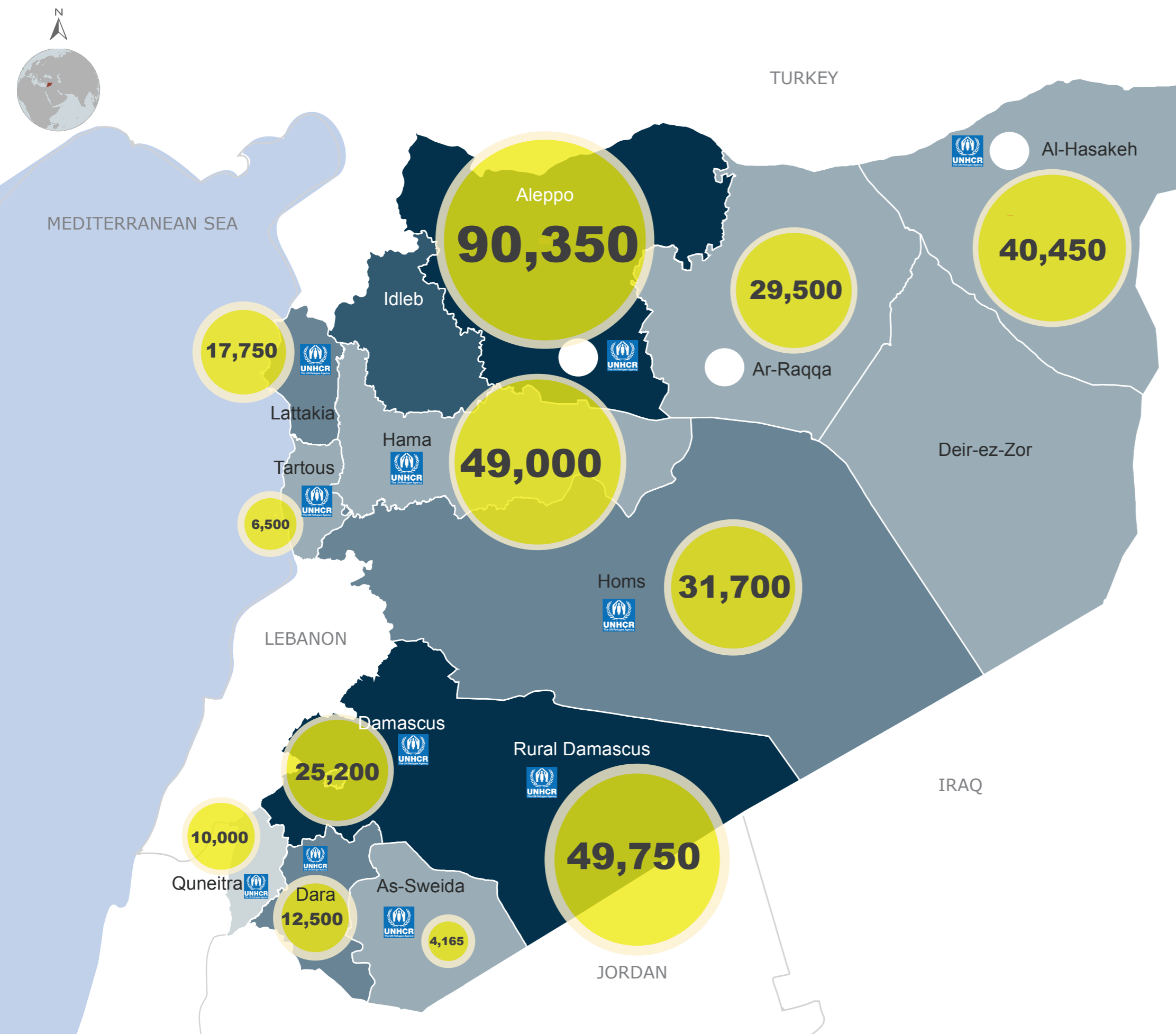
BREAKDOWN OF SUPPLEMENTARY NFI STOCKS PER AGENCY





SYRIA: NFI 2-MONTH DISTRIBUTION PLAN

Reporting Period: November - December 2017

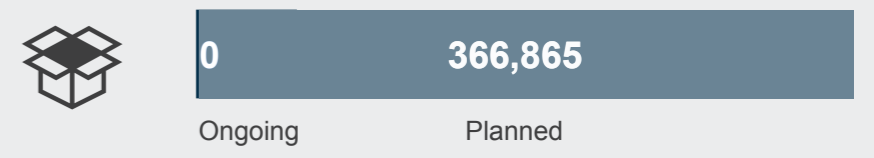


SUMMARY



TARGET NUMBER OF BENEFICIARIES (PERSONS) FOR IN-KIND DISTRIBUTION FOR NOVEMBER AND DECEMBER 2017 BY NFI SECTOR SYRIA HUB

BREAKDOWN OF BENEFICIARIES OF 2-MONTH PLAN DISTRIBUTION PER STATUS



BREAKDOWN OF BENEFICIARIES OF 2-MONTH PLAN DISTRIBUTION PER AGENCY



NOTE: This two month distribution plan is only tentative as factors such as access and security have impact in the actual plan implementation.

LEGEND

2017 NFI People In Need (PiN) per governorate

-
-
-
-
-

- UNICEF
- UNHCR

Number of beneficiaries (persons)