



SOUTH SUDAN SITUATION

RESPONDING TO THE NEEDS OF DISPLACED SOUTH SUDANESE AND REFUGEES

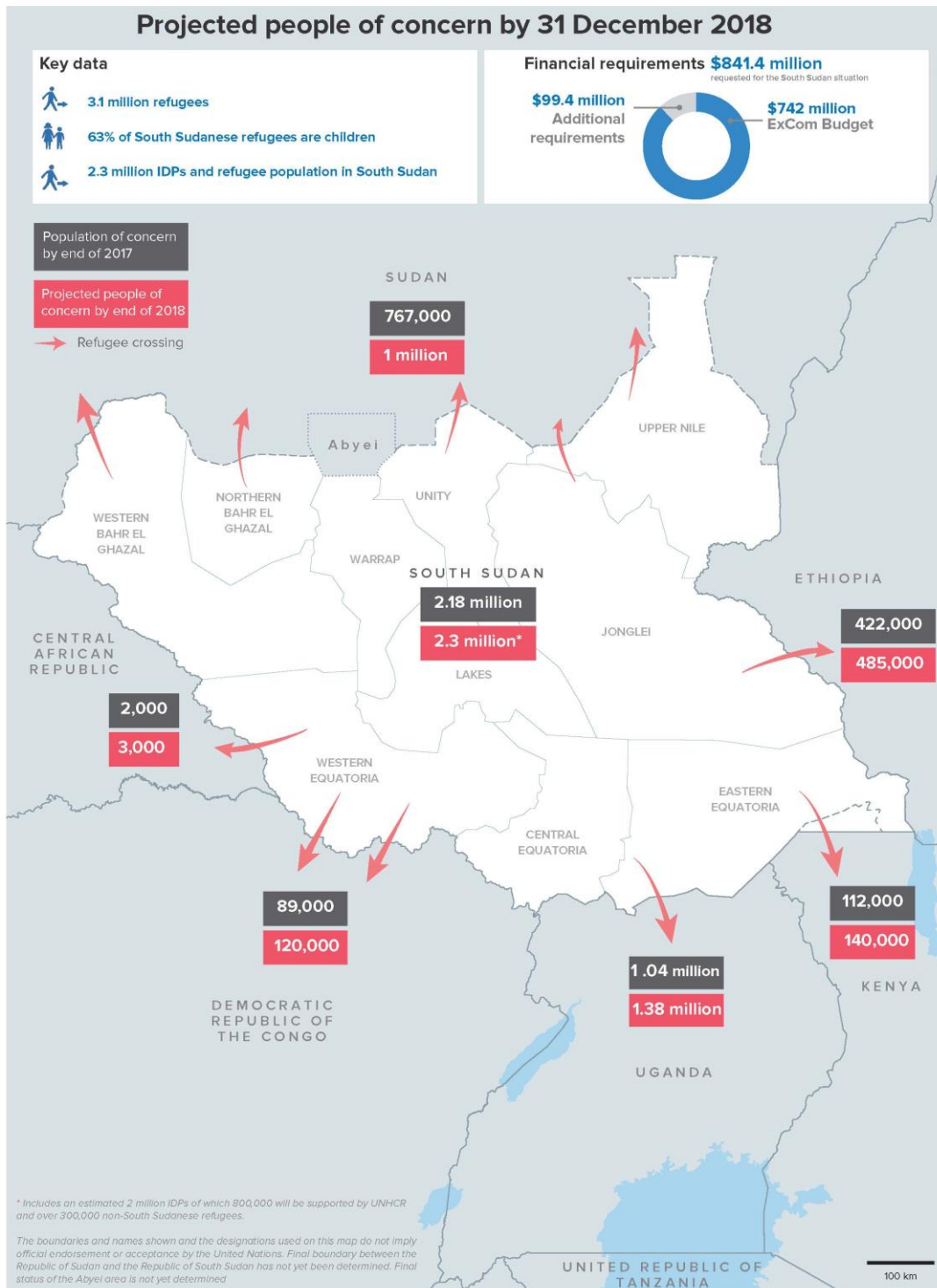
Supplementary Appeal

January - December 2018




Contents

Overview of the South Sudan situation	4
The South Sudan situation Supplementary appeal and the regional Refugee Response Plan – how they fit together	6
Summary of financial requirements	7
Planning assumptions	8
Strategic overview	9
Key intervention areas	12
Coordination and working in partnership	15
Priorities for resource mobilization	16
Implications for people of concern if UNHCR’s strategy is not supported	17
South Sudan	18
Overview	19
Needs and response	20
Identified needs	20
Response	21
Key intervention areas	23
Coordination and working in partnership	25
Financial requirements	26
Financial requirements in countries of asylum	27
Uganda	28
Ethiopia	29
Sudan	30
Kenya	31
The Democratic Republic of the Congo	32
The Central African Republic	33

Map of the area covered by this appeal



Overview of the South Sudan situation

		
2.18 million	2.4 million	85%
People internally displaced and non-South Sudanese refugees in South Sudan*	South Sudanese refugees hosted in neighbouring countries**	Of South Sudanese refugees are women and children
		7
		Countries covered in this Appeal

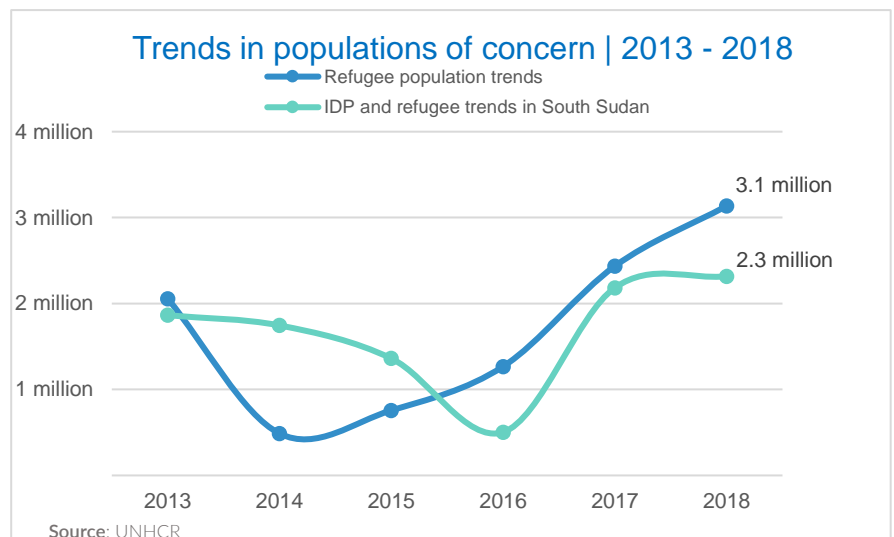
* As of end December 2017: source HCT / UNHCR

** As of end December 2017: source UNHCR

Renewed violence in South Sudan, compounded by drought and the threat of famine, has led to the **fastest growing refugee situation in Africa today and the world's third biggest refugee crisis**. Over one third of South Sudan's estimated 12 million citizens are displaced, while more than half of the population is affected by the crisis, and nearly two million IDPs are in need of urgent humanitarian assistance. The political and security situation inside the country remains volatile. Armed conflict persists, along with killings, abductions, rape and a general state of lawlessness.

The **refugee exodus from South Sudan continues at an alarming rate**, even as the crisis is entering its fifth year. **Close to 2.4 million South Sudanese have** fled to neighbouring countries mostly to Uganda—the largest host country in sub-Saharan Africa—followed by Sudan, Ethiopia, Kenya, the Democratic Republic of the Congo (DRC) and the Central African Republic (CAR). Refugees from South Sudan have been granted

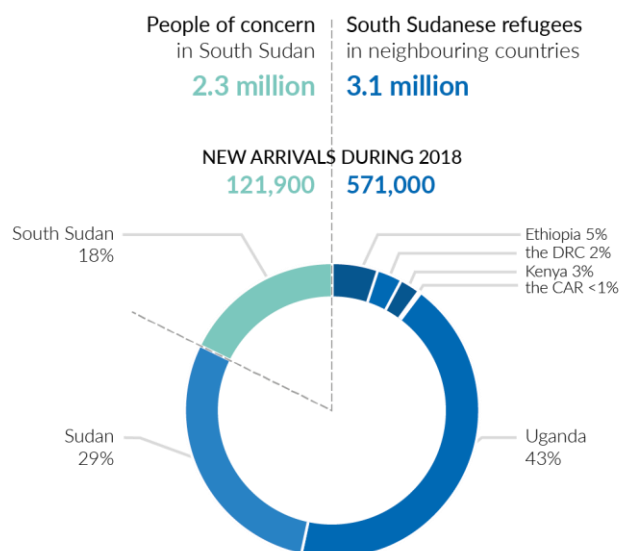
prima facie refugee status by these countries, demonstrating strong commitment to refugee protection despite limited national resources. **While South Sudan's neighbours have generously upheld their responsibility to provide asylum and assistance to refugees, urgent large-scale support is needed for the refugee response.**



Severe food insecurity further exacerbates the situation, leading to massive displacement and movements across the borders, with many refugee children facing alarming levels of malnutrition. The majority of the refugees are women and children, and nearly **63 percent of the South Sudanese refugees hosted in neighbouring countries are under the age of 18**, many who have fled alone.

With the current levels of violence in South Sudan, **displacement trends are expected to be high both within the country and across the area covered by the situation**. UNHCR expects that the influx into neighbouring countries will continue and that an estimated 571,000 additional people will likely seek refuge. This would bring the estimated South Sudanese refugee population to **3.1 million**—an increase of 18 per cent—by the end of December 2018. This population is urgently in need of protection, shelter and medical care. In South Sudan itself, some two million IDPs and 307,000 non-South Sudanese refugees are expected to be in need of assistance. This would bring the total number of people of concern to UNHCR in South Sudan to 2.3 million by the end of December 2018.

PROJECTED POPULATIONS OF CONCERN | End of 2018



This Supplementary Appeal presents UNHCR’s financial requirements for its response, for which it is **seeking \$841.4 million including \$99.4 million** in urgent additional requirements from January to December 2018 to address the most pressing needs of South Sudanese IDPs and non- South Sudanese refugees in South Sudan, as well as South Sudanese refugees in neighbouring countries.

While continuing to support main host countries to ensure access to protection, UNHCR will give particular emphasis to **protection interventions** in border areas, including **profiling and registration, responding to sexual and gender-based violence (SGBV) and providing child protection, and promoting community-based approaches**. Essential service delivery is prioritized to ensure refugees have life-saving and life-sustaining support.

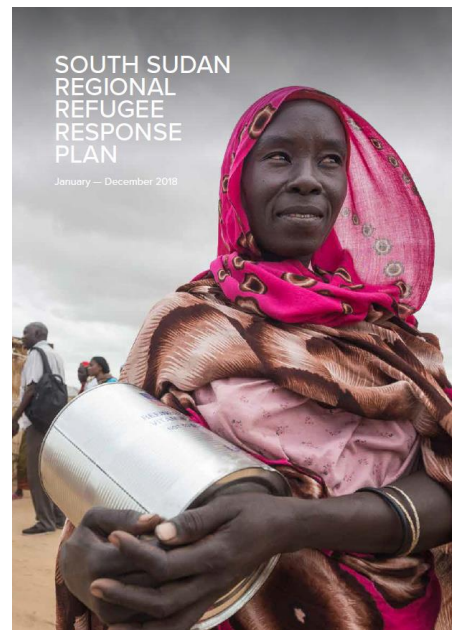
The South Sudan situation Supplementary appeal and the regional Refugee Response Plan – how they fit together

This **Supplementary Appeal** presents UNHCR's specific financial requirements and an overview of its related activities for advocacy and resource mobilization purposes concerning its response to the South Sudan situation.

As such, it is aligned with the **South Sudan regional Refugee Response Plan** (RRP, available on the Global Focus website at <http://reporting.unhcr.org/publications>) and within which the **needs of South Sudanese refugees** are outlined in detail.

The RRP lays out the inter-agency response strategy and financial requirements of UNHCR and its 74 partners to respond to the needs of refugees hosted in six neighbouring countries of asylum in 2018: the CAR, the DRC, Ethiopia, Kenya, Sudan and Uganda. More details on these individual operations are therefore included in the country chapters of that document.

More detailed information on UNHCR's country financial requirements and details on interventions planned in South Sudan are available in the annexes of this Supplementary Appeal.



Summary of financial requirements

UNHCR's Executive Committee (ExCom) budget for the South Sudan situation in 2018 was \$742,052,647. To address the increasing protection and life-saving needs of displaced people, UNHCR has established a supplementary budget to **strengthen protection capacity and response in seven countries**. Additional requirements for Ethiopia, Sudan and Uganda presented in this Supplementary Appeal amount to **\$99.4 million**. The total revised 2018 requirements for the South Sudan situation now amount to **\$841.4 million**, including support costs.

OPERATION	ExCom budget not related to the South Sudan situation	SOUTH SUDAN SITUATION			Total revised requirements
		ExCom Budget and subsequent adjustments related to the South Sudan situation	Additional requirements	Total	
CENTRAL AFRICAN REPUBLIC	38,683,253	2,586,168	-	2,586,168	41,269,421
DEMOCRATIC REPUBLIC OF THE CONGO	174,585,203	26,393,699	-	26,393,699	200,978,902
ETHIOPIA	161,707,215	158,805,010	14,292,451	173,097,461	334,804,676
KENYA	141,620,457	43,992,003	-	43,992,003	185,612,460
SOUTH SUDAN	-	155,287,323	-	155,287,323	155,287,323
SUDAN	116,615,175	115,302,141	23,981,483	139,283,624	255,898,799
UGANDA	179,042,404	237,489,748	54,048,347	291,538,095	470,580,499
REGIONAL AND GLOBAL ACTIVITIES	12,736,099	2,196,555	573,161	2,769,716	15,505,815
SUBTOTAL	824,989,806	742,052,647	92,895,442	834,948,089	1,649,937,895
SUPPORT COSTS (7 PER CENT)	-	-	6,502,681	6,502,681	6,502,681
TOTAL	815,989,806	742,052,647	99,398,123	841,450,770	1,666,440,576

More details on individual operations covered by this Appeal are available on the country refugee chapters for the CAR, the DRC, Ethiopia, Kenya, Sudan and Uganda in the *South Sudan regional Refugee Response Plan (January- December 2018)* as well as in the relevant country operations pages on the *Global Focus website (<http://reporting.unhcr.org>)*. More detailed information on financial requirements per country, and details on interventions planned in South Sudan, are annexed to this Supplementary Appeal.

Planning assumptions

1. Armed conflict and violence, economic crisis and food insecurity will unfortunately continue in South Sudan, since the ongoing efforts made by IGAD and other key actors in the region for a lasting peace are unlikely to deliver results in the near future.
2. By the end of 2018, the estimated cumulative number of South Sudanese refugees fleeing the violence in South Sudan will reach close to 3.1 million, while some 2.3 million people are expected to be displaced or newly-arrived refugees in South Sudan. This cumulative figure includes some two million IDPs—of which 800,000 are assisted by UNHCR—and over 307,800 refugees, mainly from Sudan.
3. The growing instability in South Sudan will lead to displacements within the country and to a continued outflow to neighbouring countries—the CAR, the DRC, Ethiopia, Kenya, Sudan and Uganda.
4. The borders will remain open to refugees seeking protection in neighbouring countries.
5. Refugees—including new and old populations—will be granted access to protection and basic services including education, health and WASH. They will be food secure and will have access to livelihood opportunities.
6. The most vulnerable IDPs and returnees living in areas accessible to humanitarian actors will receive basic assistance and enjoy protection of rights.

Strategic overview

UNHCR's overarching strategy for the South Sudan situation is in line with the Organization's Strategic Directions: **protecting** the rights of people of concern; **responding** to continued and sudden population displacement; advocating for **refugees' inclusion** in national development plans and labour markets; **empowering** communities; and **striving towards solutions** to refugee crises. UNHCR's regional strategy to the South Sudan situation will be pursued with all levels of government and with the participation of people of concern and host communities, while simultaneously continuing to strengthen national asylum systems.

With the South Sudanese refugee emergency entering its fifth year, UNHCR will redirect its response beyond the emergency phase and focus on longer-term solutions to **strengthen the resilience of refugees and allow them to become more self-reliant**, especially for those living in out-of-camp settlements. While camp-based assistance will continue to be provided, greater emphasis will be placed on addressing the needs of refugees living in out-of-camp locations, expanding community-based assistance to better serve new arrivals and host communities and ensuring refugees are able to continue living outside of camps should that be their choice. The response will also seek to integrate cash-based interventions (CBIs) where feasible to support stabilization of the existing assistance programme and to complement self-reliance initiatives and support local host community economies where possible.

The **strategic goals and key intervention areas** presented in this Supplementary Appeal are aligned with the regional response strategy and priorities outlined in the 2018 South Sudan RRP, where UNHCR and partners have centred their interventions on six pillars for the refugee response (in the six neighbouring countries hosting South Sudanese refugees). Furthermore, this Supplementary Appeal includes UNHCR's response to IDPs and non-South Sudanese refugees within South Sudan.

STRATEGIC GOAL 1: Ensure access to asylum and protection

UNHCR will continue advocating with governments to guarantee unhindered access to their territories for refugees, promoting *prima facie* recognition of refugee status during refugee influxes—especially in Ethiopia, Sudan and Uganda, which are the largest hosting countries—as well as to maintain the civilian character of asylum and humanitarian character of refugee camps and settlements.

The Office will enhance biometric registration, data management and documentation of refugees as well as protection of those most at risk with a particular focus on women and children, who are the majority of the refugee population. UNHCR will ensure protection of all people of concern through the expansion of improved community-based and multi-sectoral child protection and SGBV programmes.

STRATEGIC GOAL 2: Provide life-saving support to refugees and IDPs

In partnership with the governments and other actors, UNHCR will aim at ensuring access to services and immediate and effective response to basic needs of refugees, IDPs and host communities. UNHCR and its partners will continue to prioritize essential service delivery to ensure that people of concern are provided with life-saving and life-sustaining support, especially in key areas where large influxes of new arrivals are anticipated in Ethiopia, Sudan and Uganda.

In collaboration with other humanitarian actors, especially those engaged in the protection cluster, UNHCR will enhance the protection environment and ultimately find sustainable solutions for IDPs.

STRATEGIC GOAL 3: Promote sustainable solutions for refugees through resilience and host community support

UNHCR will proactively explore and, where applicable, pursue innovative approaches, including the expansion of cash-based interventions whenever feasible, with a view of alleviating the dependency of refugees on aid. Within the “whole of society” approach expounded by the Comprehensive Refugee Response Framework (CRRF) and based on the commitments made by States in New York, as well as the Sustainable Development Goals, UNHCR will advocate for refugees’ inclusion in national development plans and frameworks, as well as for the mainstreaming of national systems. For example, with UNHCR’s support the Government of Uganda has adopted and updated multi-year national protection and solutions strategy for refugees for 2016-2020. In Ethiopia, UNHCR will continue to support the comprehensive protection and solutions strategies developed for South Sudanese refugees.

UNHCR’s response to strengthen refugees’ resilience will also seek to develop partnerships with the private sector and development actors in order to enhance the livelihood and employment opportunities of refugees (including opportunities for self-employment where appropriate), with a view to promote peaceful coexistence with host communities.

Defying screams and gunfire, South Sudanese family flees to safety



Milly Lagu, 47, is a South Sudanese refugee living in Uganda. She is the women's affairs representative and the president of the child protection committee in Kiryandongo, Uganda. © UNHCR/Susan Hopper

For four days, Milly Lagu listened to the terrifying sound of gunfire and watched flames rising from neighbouring villages. On the fifth day, the fear was too much to bear. Knowing that soldiers could soon come and take away her two eldest sons, Milly and her children fled the village of Opari, South Sudan, in December 2013, with the screams of neighbours and sounds of gunfire still ringing in their ears.

"I thought they would either abduct them or, if I resisted, kill them," she recalls. To her horror, she

became separated from them as they left. Finally, with their group growing ever larger, Milly and her children crossed the border into Uganda, where the driver of a garbage truck offered to take them to Kiryandongo reception centre in the West. By then, they were so hungry and desperate to rest, they had little choice. *"It was filthy, but what can one do?"* says Milly.

In Kiryandongo, Milly and her children were registered as refugees and given a plot of land to farm and live on. Even now, their worries are far from over. When it rains, their hut leaks and mud seeps through the cracks. Her two eldest children cannot attend school, because Milly cannot afford the fees of \$80 per term. Just making sure her young children have enough to eat is a daily struggle. *"Life is not easy, it's hard," she says, with tears in her eyes. "Because the number of refugees has increased drastically, food rations and land have been halved. But all of them are refugees and human beings, so they must also eat. They did not come because they wanted to, they fled war the same way we did."*

To add to her heartache, in 2014, a friend broke the painful news that her husband, a military man who had been conscripted, had been shot in fighting between rival forces. Milly is so determined to improve the lives of women and children from South Sudan that, as president of the child protection committee and women's affairs representative, she travels from village to village counselling women and children suffering from depression and trauma. She also attends inter-agency meetings. *"Women and children are suffering, and I think they will continue to suffer without the help of the international community," she says. "The status of being a refugee is not permanent. At some point we shall go back home. They have to remain themselves because they are the future of our country. My only dream is if peace could return to South Sudan and we could go back. You know, there is no place like home."*

Key intervention areas

Additional information on key intervention areas planned especially in South Sudan is annexed to this Supplementary Appeal, as well as the financial requirements per country of asylum.



Protection

UNHCR's strategy will focus on registration, facilitation of access to protection services, building the capacity/resilience of communities, prevention of and response to SGBV, and addressing the protection needs of unaccompanied and separated children and other key vulnerabilities. UNHCR will:

- Support governments with the registration of refugees individually and biometrically, including those living outside camps; and advocate for the issuance of birth certificates to refugees and IDPs. Conduct verification exercises, when needed.
- Ensure the issuance of ration cards, where applicable, and individual documentation attesting to refugees' legal status in countries of asylum.
- Ensure and preserve the civilian and humanitarian character of asylum by providing support to Governments to separate armed elements through screening.
- Advocate for *prima facie* recognition of refugee status in case of sudden inflows of refugees.
- Provide counselling and sensitize refugee communities to national laws and rights.
- Provide technical advice and support to national protection mechanisms.
- Reinforce community protection system and establish child friendly and safe spaces. Support unaccompanied and separated children through alternative care mechanisms, psychosocial and recreational activities.
- Maintain effective case management and multi-sectoral response (medical, legal and psychosocial) to SGBV survivors. Ensure prevention of SGBV cases through sensitization and community-based interventions.
- Set up referral mechanisms for refugees/IDPs at heightened protection risks, and survivors of SGBV.
- Identify and assist people with specific needs in a safe protection-sensitive manner. Distribute dignity kits to women and girls.
- Establish two-way communication with refugee/IDP communities that are engaged as agents of protection and include them in planning, delivery and monitoring of protection and assistance.
- Promote and advocate for comprehensive solutions.



Shelter and core relief items

In close collaboration with governments and partners and within the agreed parameters, UNHCR will:

- Ensure that refugees have adequate accommodation.
- Assist the most vulnerable refugees and IDPs with emergency shelter and implement community-based shelter projects.
- Provide core relief items—including family tents, blankets, jerry cans, mosquito nets, sleeping mats, buckets and kitchen sets—and/ or equivalent cash assistance to newly arrived and most vulnerable refugees, and to IDPs in settlements/camps.



Health and nutrition

UNHCR will strengthen, expand and support national health services to meet the health needs of refugees. UNHCR will:

- Ensure the health status of refugee populations is improved and advocate for the inclusion of refugees into national health systems.
- Ensure that the nutritional needs of refugee populations and chronic malnutrition of children are addressed.
- Ensure equitable access and quality services, trainings, and integrated community based health activities for IDPs.
- Conduct community awareness and promotion of infant and young child feeding practices, while supporting household kitchen garden initiatives.
- Strengthen the expanded programme on immunization, with an emphasis on full measles vaccination coverage.



Education

UNHCR will strengthen, expand and support national education services so as to meet the education needs of refugees. UNHCR will:

- Ensure that access to and the quality of primary education is improved. Early childhood development centres will be promoted. Ensure access of children and youth to formal secondary education, non-formal education, and skills training.
- Advocate and support Governments for the inclusion and mainstreaming of school-age refugee children into national education systems.
- Recruit qualified teachers and build their professional skills in refugee-hosting countries.
- Promote as much as possible enrolment in tertiary education opportunities.



Water, sanitation and hygiene

So as to ensure timely provision of life-saving assistance, including water, sanitation and hygiene services, UNHCR will:

- Improve access to sustainable water services in settlements, camps and host communities.
- Ensure that populations live in satisfactory conditions of sanitation and hygiene.
- Promote good hygiene practices through the functioning of waste management systems and the establishment and maintenance of adequate sanitation facilities in camps and settlements, as well as the sensitization of communities to sanitation rules and responsibilities and the effective management of water resources.
- Focus on community-based hygiene education activities.



Livelihoods and environment

UNHCR will strengthen the local capacity to host refugees and promote peaceful coexistence among refugees and with host communities. UNHCR will:

- Ensure that refugees and host communities receive tools or production kits for agriculture, livestock and fishery activities.
- Improve self-reliance and strengthen livelihoods through training to refugees and communities on climate smart farming techniques.
- Support, through multi-purpose cash-based interventions, vulnerable individual refugees/IDPs and/or families.
- Support interventions promoting peaceful coexistence and social cohesion through the improvement of environmental conditions in areas of settlements.
- Ensure refugees' energy and fuel needs are met.

Coordination and working in partnership

In line with the Refugee Coordination Model (RCM), UNHCR coordinates and leads the humanitarian response to the South Sudan refugee crisis, in close collaboration with host Governments, UN agencies, local and international NGOs, refugee and host communities in the six countries of asylum. In June 2017, a new Regional Refugee Coordinator for South Sudan was appointed by the UN High Commissioner for Refugees. This person also serves as the High Commissioner's Special Advisor on the South Sudan situation. In addition, a support unit was established in Nairobi in Kenya.

The roll-out of the CRRF in countries affected by the South Sudan situation has led to the establishment of government-led facilitation mechanisms (such as CRRF Steering Groups, or Secretariats) that build on and complement existing coordination structures, and reflect a whole of government, multi-stakeholder approach. UNHCR is expanding strategic partnerships to include development actors including the World Bank, the African Development Bank, bilateral donors, and UN development agencies, as well as civil society and the private sector. International financial institutions such as the World Bank and regional multilateral development banks will be critical in leveraging development financing to address the root causes of displacement and develop alternative opportunities.

In Uganda, the response will benefit from the CRRF approach adopted by the Government and a broad range of stakeholders. The "whole of society approach" should guarantee a more comprehensive response that will take into account the needs of host populations and will also assist in building the foundations for long-term solutions to the refugee situation.

In the same vein, in Ethiopia, the response will benefit from the CRRF approach which supports the implementation of Ethiopia's nine pledges. The Government has increasingly sought a more sustainable response that goes beyond care and maintenance of refugees to promote their self-reliance. This approach combines wider support to host communities, fostering peaceful coexistence and greater inclusion of refugees in national development plans.

In countries which are part of the regional refugee response and are faced with mixed situations of IDPs and refugees, the RCM is applied to maximize a protection-sensitive approach and complementarity with the cluster system where it is activated such as in the CAR, the DRC, and Sudan.

In addition to responding to the refugee crisis, UNHCR in South Sudan is a member of the Humanitarian Country Team (HCT) response to internal displacement, ensuring coordination and leadership of the Protection Cluster with the Norwegian Refugee Council, and the Camp Coordination and Camp Management Cluster with IOM and ACTED.

Priorities for resource mobilization

The importance of flexible funding for UNHCR's situations

Crises are pushing people of concern to UNHCR into multiple locations, over greater and greater distances. For cases when an emergency has repercussions that go beyond the borders of the country in which it originated, **UNHCR uses the term “situation” for its advocacy, planning, budgeting and fundraising.** Situations are interlinked, one crisis generating impacts in another, or with the impacts felt far away. Crossing borders and sometimes continents, situations reflect the operational complexity of today's displacement crises, and the concomitant difficulties UNHCR and its partners have in planning and responding.

Affecting seven countries, the South Sudan situation is emblematic of this complexity and, given this complexity, UNHCR's response must be responsive and reflective. For it to be effective, funding to these situations needs to be as **broadly earmarked as possible** as situational management reflects the complexity of today's environment of sustained and mass displacement. **Financial support needs to be flexible**, allowing UNHCR to place it anywhere within a given situation, in line with the Office's priorities, from where people in need are forced to flee, to where they find refuge. It needs to come as early as possible in order for UNHCR to plan in the most efficient manner possible, allocating to priorities first. Based on this, then, the preferences for income would be as follows.

- **Unearmarked funding** is the priority for resource mobilization. Contributed without restrictions on its use, unearmarked funding allows UNHCR the critical flexibility in how best to reach refugees and other populations of concern in the greatest need and at the greatest risk.
- Secondly, funding which is **broadly earmarked at the situational or regional level**: meaning, funding that can be used across the range of countries and activities in a given region or situation in accordance with the priorities and activities identified by UNHCR.
- Thirdly, funding which is **earmarked at the country or operational level**. Funding of this type allows UNHCR to allocated funding to its planned activities within a country in a context specific manner.
- Fourthly, funding which is **earmarked to the sectoral or thematic level**. This is the most restrictive level of funding.
- Ideally, all funds raised should be **flexible in their implementation period**; meaning, UNHCR should be able to carry funds to the following year. This will enable the smooth continuation of activities, make operations more predictable, and avoid situations of UNHCR receiving funds it may not able to spend within the calendar year.

Implications for people of concern if UNHCR's strategy is not supported

In South Sudan, lack of support for the assistance to IDPs and refugees will increase their vulnerabilities. People of concern could opt for a secondary movement. The lack of resources will not allow planned key interventions to be implemented, which could in turn worsen the situation on the ground; this could also be a source of other protection concerns as outlined below:

- Key public health indicators; mortality rates—especially under five mortality, infant mortality and maternal mortality—which are currently within acceptable ranges will significantly deteriorate. HIV/TB programmes and psychosocial services would be curtailed in the main camp areas.
- Host community support would have to be rolled back, increasing tension between both communities, in addition to most livelihoods activities and initiatives to do with environmental protection and preservation of natural resources.
- Building of any additional school structures would be greatly reduced, meaning support to secondary education would be the hardest hit. The current student/classroom rate is up to 120 from a standard of 50, with potential enrolments ever increasing. Cutting of secondary education would also have a dire impact in camps, especially for youth groups.
- Livelihoods interventions, a key priority given ongoing ration cuts of 30 per cent, would be scaled back.
- Any potential assistance to relocations for IDPs as a provider of last resort in protection or under the umbrella of durable solutions would be heavily cut. Implementation of transitional solutions by UNHCR will also be impacted,

In countries of asylum, governments will find their ability to welcome and host refugees in safety and dignity to be restricted, and will have difficulty ensuring their access to services and basic assistance and support from host communities.

- UNHCR and partners' presence will be reduced and protection interventions will be limited, including access to documentation, livelihood opportunities and education, SGBV prevention, access to legal services and protection from undue detention. The most vulnerable group is children, who make up 63 per cent of the population, and they will be the most impacted.
- With limited resources, UNHCR with its partners will have to prioritize lifesaving activities, while long-term interventions such as education, livelihoods, environment, and initiatives for peaceful coexistence with host communities will all suffer.
- The maintenance of infrastructure and shelter assistance, being very expensive undertakings, would risk having to be deprioritized. This would have direct implications on living conditions and the provision of minimum standards of services in camps and settlements.

South Sudan

Map of the area covered by this appeal



Overview



1.9 million

People displaced within South Sudan*

286,200

Refugees hosted in South Sudan*



82%

Of refugees hosted in South Sudan are women and children



UNHCR presence

406 national and international staff

10 offices in the country

*As of end of December 2017: source: HCT/ UNHCR.

The South Sudan country annex is part of the Supplementary Appeal for the South Sudan situation, which outlines UNHCR's protection interventions planned in 2018 and its response to the additional and most urgent needs of people of concern displaced within South Sudan.

The conflict has now displaced over one third of South Sudan's estimated 12 million people. These are made of nearly 2 million people displaced within South Sudan and some 2.4 million that have fled to neighbouring countries.

South Sudan maintains an open door policy for new refugee arrivals, with the country hosting over 286,000 refugees as of January 2018, 92 per cent of whom are Sudanese from Sudan's South Kordofan. Asylum conditions have, however, been increasingly affected by the conflict. All refugees and asylum-seekers registered with UNHCR will continue to benefit from protection interventions, including individual registration and civil documentation.

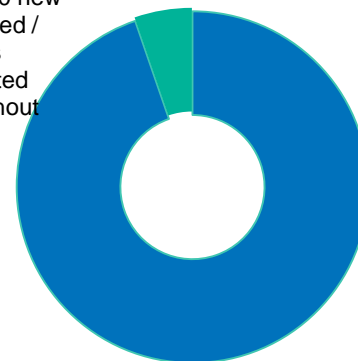
With the current levels of violence, and with displacement trends expected to continue in 2018, the number of IDPs could rise to 2 million according to HCT. Furthermore, UNHCR expects up to some 20,000 new refugees to be hosted in South Sudan, bringing the total refugee population to some 307,800 by the end of 2018.**

UNHCR's strategy will focus on the provision of physical and legal protection to refugees and IDPs, lifesaving support and comprehensive solutions. The Office will continue advocating and supporting local authorities for the inclusion of all UNHCR's people of concern in national programmes and services.

** As of end of 2018, an estimated 2 million IDPs of which 800,000 will be supported by UNHCR and over 300,000 non-South Sudanese refugees.

Population of concern

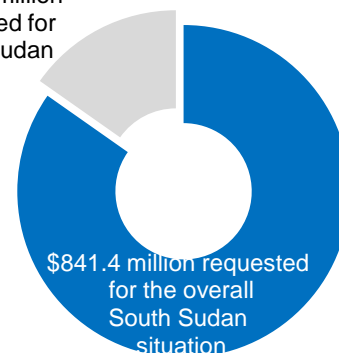
121,900 new displaced / arrivals estimated throughout 2018



2.2 million UNHCR's people of concern in South Sudan by end 2017

Financial requirements

18% or \$155.3 million requested for South Sudan



\$841.4 million requested for the overall South Sudan situation

Needs and response

Identified needs

The Government of South Sudan is providing refugees with freedom of movement, the right to work and establish businesses, the right to documentation, and access to national social services. Despite the Government's renewed commitment to the permanent ceasefire, insecurity continues in some areas which may result in civilian displacement.

The South Sudan situation has created enormous humanitarian needs.

- With **limited resources**, UNHCR is obliged to prioritize crucial lifesaving activities meaning that, in various sectors, improvements in the quality of services and emergency structures across the sectors can only be partially addressed.
- While efforts will be made to improve **the quality of education** to meet minimum standards, qualified teachers, additional classrooms, and scholastic materials are required.
- Access to secondary and tertiary education as well as vocational training for youth is urgently needed and additional resources are needed to improve further this access as a way to reduce the risks of forced recruitment, in particular of children.
- The great majority of refugees remain under emergency shelters. Additional resources are required to ensure that at least 50 per cent of refugees have a **transitional shelter**.
- In terms of **non-food items**, the prioritized response will only address the needs of new arrivals and a limited number of people with specific needs.
- While efforts are made to ensure access to primary health care to refugees in all accessible camps, substantial gaps remain **in mental health and psychosocial support, HIV/AIDS, and training**. More qualified medical staff are required to sustain minimum standards in view of the growing refugee population.
- Despite progress, most boreholes are still powered by generators and further investment is necessary to continue and increase the number of **solar run water systems**.
- **Hygiene promotion** should be scaled up and embark on more sustainable and permanent / durable structures for latrines as well as shift from emergency communal latrines to household latrines.
- Nutritional status among children is still poor; anemia prevalence among under-five children and among women of reproductive age are still of serious public health significance. Efforts to **reduce all forms of malnutrition**, therefore, need to continue to avert the risks and ensure optimal nutritional status among the refugee population.
- With the current food ration reduced, more robust investment in **livelihoods interventions** are desperately needed to help improve self-reliance of refugees.
- UNHCR requires additional resources to continue efforts regarding the **support to the host communities** to promote peaceful co-existence and protect asylum space as well as to expand and increase the capacity of Pamir to accommodate the remaining refugees to be relocated from Yida or to accommodate **new arrivals** from South Kordofan.

Response

Throughout 2018, UNHCR interventions will be guided by the following strategic priorities to respond to the protection and immediate needs of refugees and IDPs in South Sudan.

Protection, including emergency response

Ensure identification and documentation of refugees, prevent and respond to cases of SGBV and child protection, while maintaining the civilian character of asylum. Life-saving multi-sector emergency response will be provided in line with refugee influx trends, with a special focus on women, children and people with specific needs. This includes food assistance, health and nutrition, WASH, site/shelter/NFIs, as well as education where the focus will be on improving access to, and the quality of, education through teacher training and classroom expansion as part of a broader strategy to prevent recruitment of children by armed groups.

Social service delivery is integrated with local governments

Enhance social service delivery capacity in refugee-hosting districts, integrating services with local government systems for the benefit of the whole population. Achieve the integration of health, education, justice and WASH facilities into district and line ministry management systems.

Support resilience of displaced population

Increase investments in livelihoods, youth programming and education to support protection, self-reliance, pathways to solutions and social cohesion with host communities. Negotiate sufficient access to land to increase opportunities for agriculture, undertake market surveys, provide agricultural inputs and support soft skills.

Identify and respond to the needs of most vulnerable IDPs

Foster peaceful co-existence with host communities and transparent dialogue on sharing resources, in the search for solutions, and in maintaining protection leadership through engagement in coordination, provision of qualitative information, and analysis of population movements.

Collaborate and work closely with other humanitarian actors

A priority will be given to working with actors in the Protection Cluster to enhance a protection environment enabling of durable solutions for IDPs.

Protection of stateless persons and prevention of statelessness

Continue enhanced engagement on three actions of the #iBelong Campaign to end Statelessness: prevent statelessness in cases of State succession, issue nationality documentation to those having entitlement to it, and improve quantitative and qualitative data on stateless populations.

A refugee girl's dream

14-year-old Sudanese refugee Suar told UNHCR colleagues about her biggest challenge. Suar is one of 24,000 refugees studying in Maban County refugee camp.

"Living in the camp as a refugee is tough of course, but wanting to study as a refugee girl is even tougher, we have to fight every day to come to school. Among all the work we have to do in order to support our family, we need to find the time to study, it's not easy, but I cannot give up.



Suar, a 14-year old Sudanese refugee, studying in one of 24 primary schools in Maban County, South Sudan ©UNHCR/Eujin Byun

I have a dream, I want to be a better person, I want to have a better future and I know education is the key to do so. I'm encouraging my friends to come to school and explain what they are missing, but sometime it's really hard for them to come and I understand their situation.

I'm also sad to see some of my friends get married so young. It's heart-breaking to see all my friends out of school. I want to show them how education can change our life, so I study hard".

In South Sudan, UNHCR works closely with refugee girls and their parents to encourage them to continue their studies.

Key intervention areas



Protection

UNHCR's strategy will focus on registration, facilitate access to protection services, prevention of and response to SGBV, addressing the protection needs of unaccompanied and separated children, and other key vulnerabilities. UNHCR will:

- Ensure life-saving multi-sector emergency response in line with refugee influx trends, with a special focus on women, children and people with specific needs. This includes provision of food assistance, health and nutrition, WASH, site/shelter/NFIs, and education.
- Enhance data collection and management through verification exercises, continuous registration and documentation to facilitate targeted interventions and appropriate response especially in terms of response to SGBV and child protection.
- Strengthen leadership structures and promote meaningful participation and ownership as well as capacity building of leadership on their respective roles and responsibilities.
- Support host communities through peaceful coexistence and peace committee initiatives across refugee locations.
- Reinforce the civilian nature of camps and advocate with the Government to prevent armed elements from accessing them.



Education

UNHCR's strategy will focus on the provision of primary education, access to secondary education, as well as accelerated learning programme, as an integral part of child protection interventions in camps where a risk of child recruitment remains. UNHCR will:

- Reach up to 95 percent of school age enrolment in primary schools, support up to 50 percent children in secondary level, recruit additional qualified teachers, and construct additional classrooms to improve the learner / teacher ratio.
- Increase the enrolment in accredited certified in-service training programme, while placing a priority on ICT laboratories across camps.
- Recruit more female teachers and provide appropriate sanitary materials to girls of school-going age.



Shelter and core relief items

UNHCR's strategy will ensure all newly-arriving refugees and relocating refugees are assisted with CRIs and shelters upon arrival. UNHCR will:

- Install or upgrade camp facilities in response to growing refugee populations.
- Provide emergency shelters to new arrivals and a limited number of protection relocation cases, while the number of beneficiaries for transitional shelters will be reduced by 60 percent, targeting extremely vulnerable households.
- Assist up to 2,300 vulnerable IDP households with emergency/transitional shelters.



Health and nutrition

UNHCR's strategy will continue a strong focus on the prevention of public health issues and malnutrition. UNHCR will:

- Ensure equitable access and quality services, trainings, and integrated community-based health activities.
- Strengthen mental health and psychosocial services disease surveillance and epidemic preparedness and response.
- Strengthen the expanded programme on immunization, with an emphasis on full measles vaccination coverage.
- Support host populations and ensure access to health and related services; and improve laboratory services.
- Continue supporting referral cases in-country; and maintain the existence of referral pathways.
- Continue the community management of acute malnutrition (CMAM) aimed at the nutritional rehabilitation of malnourished children under 5 years of age, pregnant and lactating women, and other vulnerable people.
- Conduct community awareness and promotion of infant and young child feeding practices, while supporting household kitchen garden initiatives.



WASH

UNHCR's strategy will focus on maintaining and upgrading water, sanitation and hygiene systems in all camps to provide an average of 20 litres/person/day and the provision of 75 per cent household latrine coverage. UNHCR will:

- Focus on community-based hygiene education activities.
- Provide emergency latrine structures for new arrivals.
- Increase quality and impact of hygiene promoters through training.



Livelihoods and self-reliance

UNHCR's strategy will strengthen livelihoods programmes to ensure resilience of interventions to recurrent shocks. UNHCR will:

- Implement livelihood interventions with an emphasis on self-sustainable agricultural, livestock and life skills development. Where possible, cash-based interventions will be initiated.
- Up to 50 per cent of eligible refugees will be supported with agricultural inputs to undertake production to enhance food security at the household.
- Entrepreneurship and business training with start-ups will be provided up to some 1,300 people, while some 1,800 people will receive life-skill training.



Natural resources and environment

UNHCR's strategy will focus on developing action plan for environment protection. UNHCR will:

- Conduct awareness campaigns and sensitize refugees on the protection of natural resources, wildlife and eco-systems.
- Capacitate refugee farmers on nursery establishment and encourage local production of tree seedlings.
- Plant some 120,000 different types of climatically friendly trees and establish up to 10 demonstration plots for forest rehabilitation and woodlot.
- Establish up to 5 experimental sites to demonstrate refugees on fuel-efficient practices and equipment.
- Roll out the Save Access to Fuel and Energy (SAFE) strategy across the camps, as a sustainable approach to respond to the emergency needs of refugee population in camps.



Durable solutions

UNHCR's strategy will continue to advocate for the creation of conditions conducive for solutions. UNHCR will:

- Provide technical advice and actively participate in the inter-agency process of developing a solutions strategy / framework for IDPs and, where applicable, refugees in South Sudan.
- Conduct situation analysis, and provide individual counselling and, when required and appropriate, assistance to refugees opting for voluntary repatriation from South Sudan.
- Carry out monitoring and assessment of possible spontaneous return of refugees from neighbouring countries and assist those with specific vulnerabilities with community based assistance where required.



Logistics and operations support

UNHCR's strategy will focus on ensuring timely and effective delivery of core relief items and other assistance items, with a focus on pre-positioning of relief items during the dry season. UNHCR will:

- Focus on the minimum maintenance of access roads and airstrip infrastructure in order to keep continuous access to the camps.
- Establish and maintain warehouses/rub-halls in Juba and key field locations; transportation of relief items.
- Provide workshop services for operational fleets in Juba and field locations for UNHCR and partners' vehicles.

Coordination and working in partnership

UNHCR will continue to place an importance on strengthening partnerships and ensuring coordination with relevant stakeholders, including Government, NGO and UN partners. UNHCR will maintain close cooperation with the Commission for Refuge Affairs and Directorate of Nationality, Passports and Immigration. With the implementation of new administrative divisions, renewed efforts will be made to develop constructive cooperation with local authorities and raise their awareness of UNHCR's work in the country.

UNHCR will also continue to work with a wide range of humanitarian partners including UN agencies, namely WFP, UNICEF, FAO, and UNDP, NGOs and donors, and will actively participate in various coordination fora in the country. The Office is also reaching out to development actors to advocate their engagement in refugee-hosting areas as well as resilience-building in communities hosting IDPs, including through their participation in the South Sudan Interim Cooperation Framework.

In cooperation with the Commission for Refuge Affairs, UNHCR will continue to exercise its leadership and coordination role for the refugee response at national and field levels. Protection and multi-sectoral assistance delivery will be undertaken directly and in partnership with project/operational NGOs and in cooperation with the authorities, refugees and host communities.

UNHCR and its partners work to maintain a synergy and necessary coordination with the clusters/HCT in accordance with the RCM. Regular coordination meetings will be held both in Juba and the field.

On IDP response, UNHCR's engagement will remain part of the inter-agency response where UNHCR leads the Protection Cluster across the country, co-leads the CCCM Cluster, and participates actively in the NFI/Shelter Cluster. Close coordination will be maintained with UN agencies, NGOs as well as UNMISS. The Protection Cluster leadership involves the coordination of numerous NGOs, UN, and government partners. UNHCR coordination efforts are made to ensure that the centrality of protection remains the primary focus of the HCT and its relief efforts. Mentoring of local actors and field offices will enable the Protection Cluster to enhance local partnerships.

Financial requirements

UNHCR's 2018 ExCom budget for [South Sudan](#) to address the needs of internally displaced people and refugees in South Sudan includes **\$155,287,323** million, presented below. No additional requirements are presented in this appeal.

	South Sudan situation		
	ExCom Budget and subsequent adjustments related to the South Sudan situation	Additional requirements	Total
Favourable protection environment	5,833,512	-	5,833,512
<i>Law and policy</i>			
<i>Access to territory and legal assistance</i>			
<i>Public attitude towards people of concern</i>			
Fair protection processes and documentation	4,952,489	-	4,952,489
<i>Registration and profiling</i>			
<i>Status refugee determination</i>			
<i>Individual documentation</i>			
Security from violence and exploitation	14,869,294	-	14,869,294
<i>Protection from crime</i>			
<i>Protection from effects of armed conflict</i>			
<i>Prevention of and response to SGBV</i>			
<i>Protection of children</i>			
Basic needs and services	74,025,350	-	74,025,350
<i>Health and nutrition</i>	22,910,590	-	22,910,590
<i>Shelter and NFIs</i>	15,174,053	-	15,174,053
<i>WASH</i>	7,734,472	-	7,734,472
<i>Basic and domestic items</i>	9,153,403	-	9,153,403
<i>Services for people with specific needs</i>	5,397,366	-	5,397,366
<i>Education</i>	11,487,602	-	11,487,602
<i>Energy</i>	2,167,864	-	2,167,864
Community empowerment and self-reliance	18,241,315	-	18,241,315
<i>Community mobilization</i>			
<i>Self-reliance and livelihoods</i>			
<i>Peaceful coexistence</i>			
<i>Natural resources and shared environments</i>			
Durable solutions	2,339,491	-	2,339,491
<i>Comprehensive Solutions</i>			
<i>Resettlement</i>			
Leaderships, coordination and partnerships	6,320,665		6,320,665
Logistics and operations support	28,705,207	-	28,705,207
SUBTOTAL	155,287,323	-	155,287,323
Support costs (7 per cent)	-	-	-
TOTAL	155,287,323	-	155,287,323

Financial requirements in countries of asylum

Uganda

Ethiopia

Sudan

Kenya

Democratic Republic of Congo

Central African Republic

Uganda

UNHCR's 2018 ExCom budget for [Uganda](#) for the South Sudan situation totals **\$237,489,748** million. UNHCR has established a supplementary budget for the requirements presented below, amounting to **\$54,048,347** million to address the needs of South Sudanese refugees.

	South Sudan situation		
	ExCom Budget and subsequent adjustments related to the South Sudan situation	Additional requirements	Total
Favourable protection environment <i>Access to territory and legal assistance</i>	4,076,638	317,597	4,394,235
Fair protection processes and documentation <i>Reception conditions Registration and profiling Status refugee determination Individual documentation</i>	15,623,346	2,444,377	18,067,723
Security from violence and exploitation <i>Protection from crime Prevention of and response to SGBV Protection of children</i>	14,401,949	2,269,939	16,671,888
Basic needs and services	147,250,916	27,211,346	174,462,262
<i>Health and nutrition</i>	32,085,864	4,160,953	36,246,817
<i>Shelter and NFIs</i>	22,701,325	4,103,474	26,804,800
<i>WASH</i>	34,311,362	7,534,888	41,846,250
<i>Basic and domestic items</i>	17,208,490	4,303,095	21,511,585
<i>Services for people with specific needs</i>	5,946,504	894,723	6,841,227
<i>Education</i>	32,800,329	5,915,505	38,715,834
<i>Energy</i>	2,197,042	298,708	2,495,750
Community empowerment and self-reliance <i>Community mobilization Self-reliance and livelihoods Peaceful coexistence Natural resources and shared environments</i>	29,330,136	5,317,683	34,647,819
Durable solutions <i>Resettlement</i>	1,591,216	182,685	1,773,901
Leaderships, coordination and partnerships	1,555,219	-	1,555,219
Logistics and operations support	23,660,328	16,304,720	39,965,048
SUBTOTAL	237,489,748	54,048,347	291,538,095
Support costs (7 per cent)	-	3,783,384	3,783,384
TOTAL	237,489,748	57,831,731	295,321,479

Ethiopia

UNHCR's 2018 ExCom budget for [Ethiopia](#) for the South Sudan situation totals **\$158,805,010** million. UNHCR has established a supplementary budget for the requirements presented below, amounting to **\$14,292,451** million to address the needs of South Sudanese refugees.

	South Sudan situation		
	ExCom Budget and subsequent adjustments related to the South Sudan situation	Additional requirements	Total
Favourable protection environment <i>Access to territory and risk of refoulement</i>	439,933	228,007	667,940
Fair protection processes and documentation <i>Reception conditions Registration and profiling Individual documentation Civil registration and civil status documentation Family reunification</i>	6,854,197	3,669,328	10,523,525
Security from violence and exploitation <i>Protection from crime Protection from effects of armed conflict Prevention of and response to SGBV Protection of children</i>	9,245,691	644,120	9,889,811
Basic needs and services	115,489,751	2,665,971	118,155,722
<i>Health and nutrition</i>	28,523,813	556,908	29,080,721
<i>Shelter and NFIs</i>	15,686,198	-	15,686,198
<i>WASH</i>	38,318,429	-	38,318,429
<i>Basic and domestic items</i>	19,574,954	-	19,574,954
<i>Services for people with specific needs</i>	2,279,164	399,010	2,678,175
<i>Education</i>	15,664,113	1,710,053	17,374,166
<i>Energy</i>	7,732,708	-	7,732,708
Community empowerment and self-reliance <i>Community mobilization Self-reliance and livelihoods Peaceful coexistence Natural resources and shared environments</i>	18,365,161	769,524	19,134,685
Durable solutions <i>Voluntary return Local integration</i>	721,866	-	721,866
Leaderships, coordination and partnerships	822,864	531,700	1,354,564
Logistics and operations support	6,865,546	5,783,802	12,649,348
SUBTOTAL	158,805,010	14,292,451	173,097,461
Support costs (7 per cent)	-	1,000,472	1,000,472
TOTAL	158,805,010	15,292,923	174,097,933

Sudan

UNHCR's 2018 ExCom budget for [Sudan](#) for the South Sudan situation totals **\$115,302,141** million. UNHCR has established a supplementary budget for the requirements presented below, amounting to **\$23,981,483** million to address the needs of South Sudanese refugees.

	South Sudan situation		
	ExCom Budget and subsequent adjustments related to the South Sudan situation	Additional requirements	Total
Fair protection processes and documentation	9,356,381	2,665,626	12,022,007
<i>Reception conditions</i>			
<i>Registration and profiling</i>			
Security from violence and exploitation	3,072,587	2,157,365	5,229,952
<i>Prevention of and response to SGBV</i>			
<i>Protection of children</i>			
Basic needs and services	82,994,221	17,033,217	100,027,438
<i>Health and nutrition</i>	12,427,990	3,113,312	15,541,302
<i>Shelter and NFIs</i>	13,653,794	6,298,736	19,952,530
<i>WASH</i>	21,972,508	-	21,972,508
<i>Basic and domestic items</i>	14,529,754	1,801,905	16,331,659
<i>Services for people with specific needs</i>	3,043,794	462,293	3,506,087
<i>Education</i>	13,162,587	3,276,655	16,439,242
<i>Energy</i>	4,203,794	2,080,316	6,284,110
Community empowerment and self-reliance	14,836,608	2,125,274	16,961,982
<i>Self-reliance and livelihoods</i>			
Leaderships, coordination and partnerships	613,794	-	613,794
Logistics and operations support	4,428,551	-	4,428,551
SUBTOTAL	115,302,141	23,981,483	139,283,624
Support costs (7 per cent)	-	1,678,704	1,678,704
TOTAL	115,302,141	25,660,187	140,962,328

Kenya

UNHCR's 2018 ExCom budget for Kenya for the South Sudan situation totals \$43,992,003 million, presented below. No additional requirements are presented in this appeal.

	South Sudan situation		
	ExCom Budget and subsequent adjustments related to the South Sudan situation	Additional requirements	Total
Favourable protection environment <i>Access to territory and legal assistance</i>	293,233	-	293,233
Fair protection processes and documentation <i>Reception conditions</i> <i>Registration and profiling</i>	1,850,838	-	1,850,838
Security from violence and exploitation <i>Protection from crime</i> <i>Prevention of and response to SGBV</i> <i>Protection of children</i>	3,473,726	-	3,473,726
Basic needs and services	28,652,088	-	28,652,088
<i>Health and nutrition</i>	7,330,782	-	7,330,782
<i>Shelter and NFIs</i>	6,074,975	-	6,074,975
<i>WASH</i>	4,455,675	-	4,455,675
<i>Basic and domestic items</i>	2,097,939	-	2,097,939
<i>Services for people with specific needs</i>	1,022,520	-	1,022,520
<i>Education</i>	5,033,858	-	5,033,858
<i>Energy</i>	2,636,339	-	2,636,339
Community empowerment and self-reliance <i>Community mobilization</i> <i>Self-reliance and livelihoods</i> <i>Peaceful coexistence</i> <i>Natural resources and shared environments</i>	3,870,856	-	3,870,856
Leaderships, coordination and partnerships	239,983		239,983
Logistics and operations support	5,611,279	-	5,611,279
SUBTOTAL	43,992,003	-	43,992,003
Support costs (7 per cent)	-	-	-
TOTAL	43,992,003	-	43,992,003

The Democratic Republic of the Congo

UNHCR's 2018 ExCom budget for the Democratic Republic of the Congo to address the needs of South Sudanese refugees includes \$26,393,699 million, presented below. No additional requirements are submitted in this appeal.

	South Sudan situation		
	ExCom Budget and subsequent adjustments related to the South Sudan situation	Additional requirements	Total
Favourable protection environment <i>Access to territory and legal assistance</i>	1,135,953	-	1,135,953
Fair protection processes and documentation <i>Registration and profiling</i> <i>Civil registration and civil status documentation</i>	2,180,451	-	2,180,451
Security from violence and exploitation <i>Protection from crime</i> <i>Prevention of and response to SGBV</i> <i>Protection of children</i>	3,697,053	-	3,697,053
Basic needs and services	13,795,868	-	13,795,868
<i>Health and nutrition</i>	3,753,018	-	3,753,018
<i>Shelter and NFIs</i>	1,435,728	-	1,435,728
<i>WASH</i>	3,765,428	-	3,765,428
<i>Basic and domestic items</i>	1,954,850	-	1,954,850
<i>Services for people with specific needs</i>	1,066,804	-	1,066,804
<i>Education</i>	1,820,040	-	1,820,040
Community empowerment and self-reliance <i>Self-reliance and livelihoods</i> <i>Peaceful coexistence</i>	2,092,798	-	2,092,798
Leaderships, coordination and partnerships	187,395		187,395
Logistics and operations support	3,304,182	-	3,304,182
SUBTOTAL	26,393,699		26,393,699
Support costs (7 per cent)	-	-	-
TOTAL	26,393,699	-	26,393,699

The Central African Republic

UNHCR's 2018 ExCom budget for Central African Republic to address the needs of South Sudanese refugees includes \$2,586,168 million, presented below. No additional requirements are submitted in this appeal.

	South Sudan situation		
	ExCom Budget and subsequent adjustments related to the South Sudan situation	Additional requirements	Total
Fair protection processes and documentation	148,088	-	148,088
<i>Civil registration and civil status documentation</i>			
Security from violence and exploitation	222,962	-	222,962
<i>Prevention of and response to SGBV</i>			
<i>Protection of children</i>			
Basic needs and services	2,215,118	-	2,215,118
<i>Health and nutrition</i>	763,154	-	763,153
<i>Shelter and NFIs</i>	338,185	-	338,185
<i>WASH</i>	208,013	-	208,013
<i>Basic and domestic items</i>	267,886	-	267,886
<i>Services for people with specific needs</i>	199,006	-	199,006
<i>Education</i>	438,875	-	438,875
SUBTOTAL	2,586,168	-	2,586,168
Support costs (7 per cent)	-	-	-
TOTAL	2,586,168	-	2,586,168

SOUTH SUDAN SITUATION

RESPONDING TO THE NEEDS OF DISPLACED SOUTH SUDANESE AND REFUGEES

Supplementary Appeal

January - December 2018



UNHCR
hqfr00@unhcr.org

P.O. Box 2500
1211 Geneva 2

www.unhcr.org
reporting.unhcr.org

Published on March 2018

Cover photo:

Twelve-year-old South Sudanese refugee Reida Tabu lives in a shelter with her family and two other families in Haut-Uele province in South Sudan. . ©UNHCR/Colin Delfosse