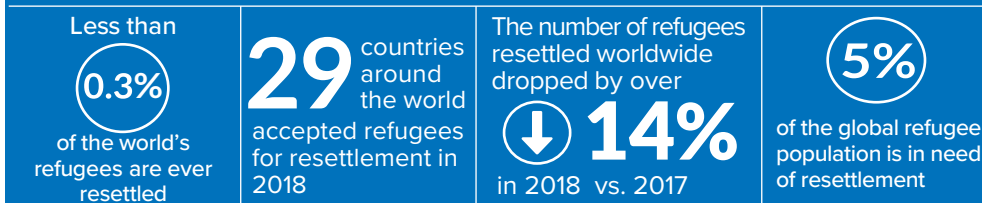


GLOBAL RESETTLEMENT BY THE NUMBERS:



Vulnerability categories include:



Refugee: A person forced to flee their home country to escape persecution, war, or violence.

Resettlement: The careful selection by governments such as Canada – for purposes of lawful admission – of vulnerable refugees who can neither return to their home country nor live in safety in neighbouring countries.

There are more than
25.9
MILLION
refugees in the world

84% Of the world's refugees are hosted by developing countries

Top host countries include:

- 1.Turkey (3.7 mil)
- 2.Pakistan (1.4 mil)
- 3.Uganda (1.2 mil)

HOW DOES REFUGEE RESETTLEMENT WORK?



Only recognized refugees whose **life, liberty, safety, health, or other fundamental rights are at risk** in the host country are considered for resettlement.



UNHCR refers only the most vulnerable cases – refugees whose lives are in danger in their current host country – to be considered for resettlement.
Refugees do not pick their country of resettlement.



UNHCR identifies vulnerable cases to be referred to resettlement countries.
Refugees cannot apply themselves for resettlement.



Persons found to have committed serious crimes or who might pose a threat to others **would not be referred** resettlement in another country.

RESETTLEMENT TO CANADA

Canada has an exceptional history of welcoming refugees and is the second largest resettlement country in the world. Since 1959, Canada has resettled over 700,000 refugees.

CANADA HAS THREE DIFFERENT RESETTLEMENT PROGRAMS

Government Assisted

Refugee referred by:

UNHCR

Financial assistance:

From the Federal Government for one year

1

Private Sponsorship

Refugee referred by:

A private sponsor

Financial assistance:

From the sponsor for the first year

2

Blended Visa

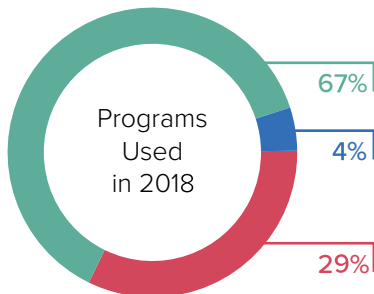
Refugee referred by:

UNHCR

Financial assistance:

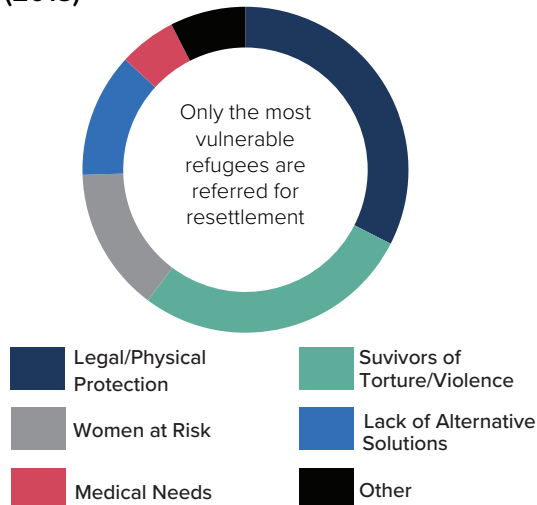
Six months from sponsors, six months from Government

3



After refugees are referred for resettlement by UNHCR, Canadian Visa Officers screen them for potential medical, criminal and security concerns, and assess whether they are in need of resettlement. Upon arrival, resettled refugees become Canadian permanent residents.

Resettlement Referrals to Canada from UNHCR by Vulnerability Category (2018)



Resettlement to Canada by Region of Origin (2018)

