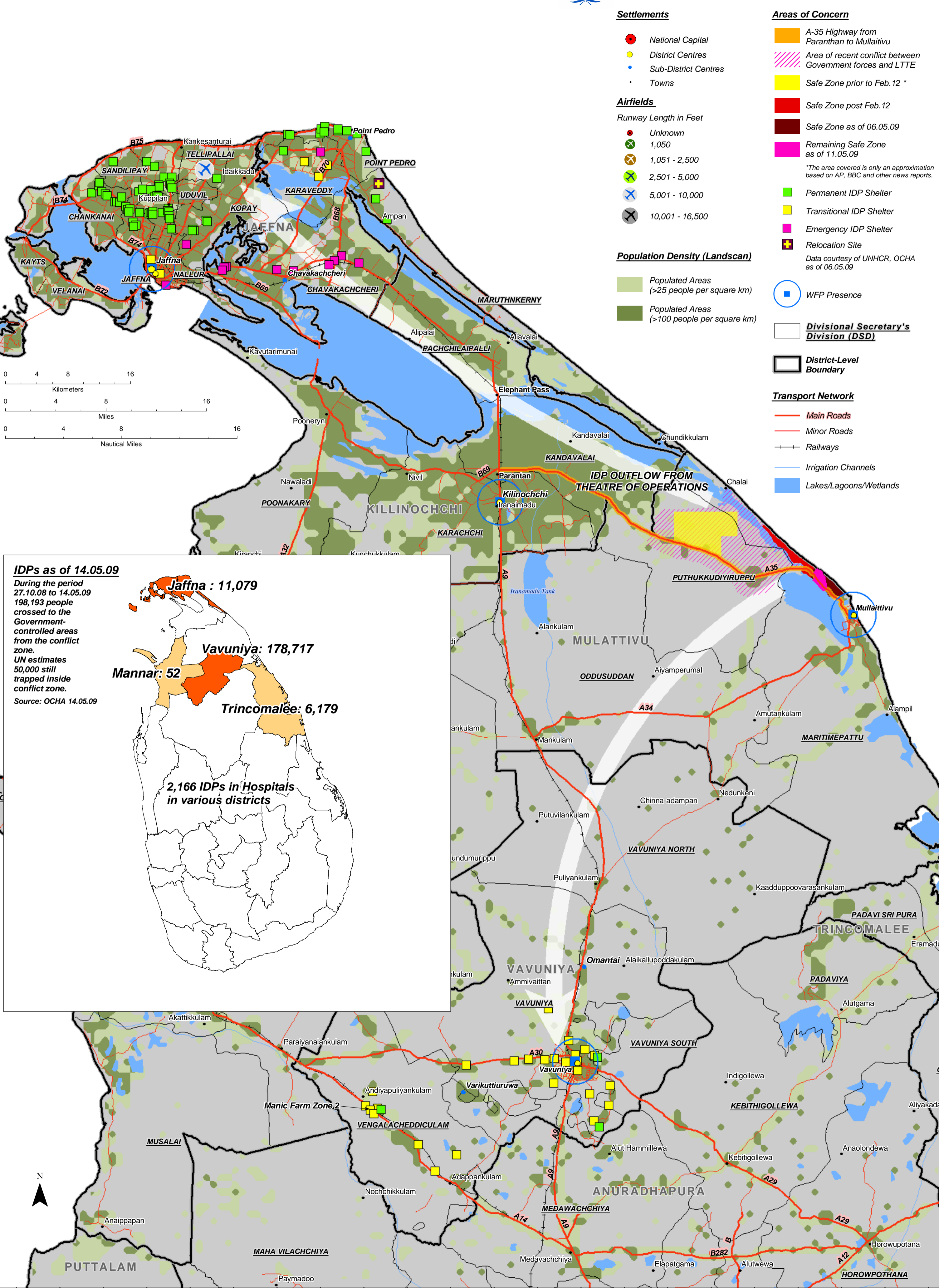


The names and boundaries on this map do not imply acceptance or recognition by the World Food Programme or by the United Nations. Facts and figures in this map are to the best of our knowledge accurate and up to date at the time of writing but subject to change at any time. The World Food Programme makes no warranty or representation as to the reliability or accuracy of the data contained herein. This map is for planning purposes only. © United Nations World Food Programme 2009. All rights reserved. Compiled by WFP OMEP (Situation Room) 14.05.09. For info please contact Emergency.Preparedness@wfp.org



Sri Lanka 'SAFE ZONE' and IDP Locations

WFP Emergency Preparedness Branch (OMEP) 14.05.09



Settlements

- National Capital
- District Centres
- Sub-District Centres
- Towns

Airfields

- R runway Length in Feet
- Unknown
 - 1,050
 - 1,051 - 2,500
 - 2,501 - 5,000
 - 5,001 - 10,000
 - 10,001 - 16,500

Population Density (Landscan)

- Populated Areas (>25 people per square km)
- Populated Areas (>100 people per square km)

Areas of Concern

- A-35 Highway from Paranthan to Mullaitivu
- Area of recent conflict between Government forces and LTTE
- Safe Zone prior to Feb.12 *
- Safe Zone post Feb.12
- Safe Zone as of 06.05.09
- Remaining Safe Zone as of 11.05.09

*The area covered is only an approximation based on AP, BBC and other news reports.

- Permanent IDP Shelter
- Transitional IDP Shelter
- Emergency IDP Shelter
- Relocation Site

Data courtesy of UNHCR, OCHA as of 06.05.09

■ WFP Presence

Divisional Secretary's Division (DSD)

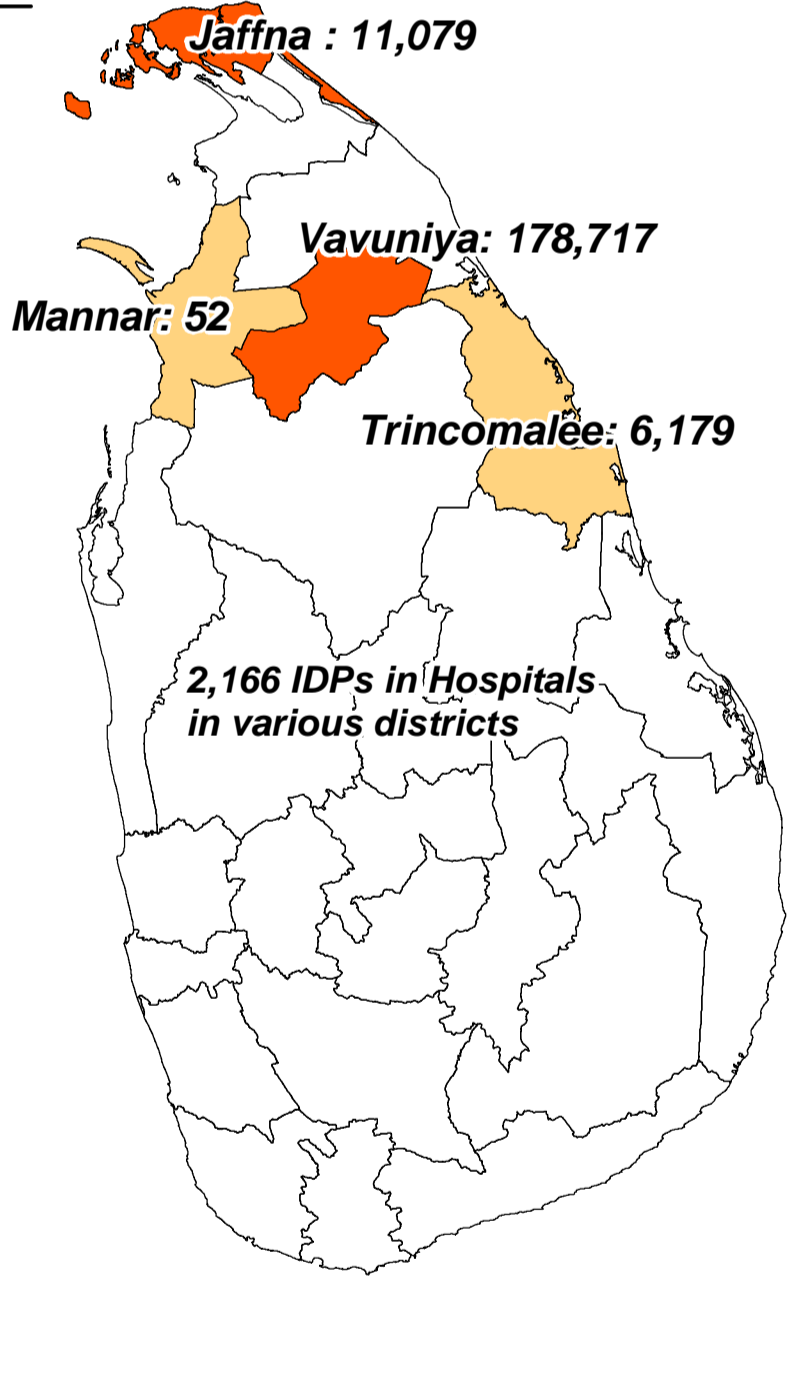
District-Level Boundary

Transport Network

- Main Roads
- Minor Roads
- Railways
- Irrigation Channels
- Lakes/Lagoons/Wetlands

IDPs as of 14.05.09

During the period 27.10.08 to 14.05.09 198,193 people crossed to the Government-controlled areas from the conflict zone. UN estimates 50,000 still trapped inside conflict zone. Source: OCHA 14.05.09



IDP OUTFLOW FROM THEATRE OF OPERATIONS