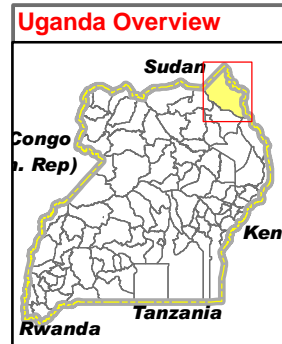
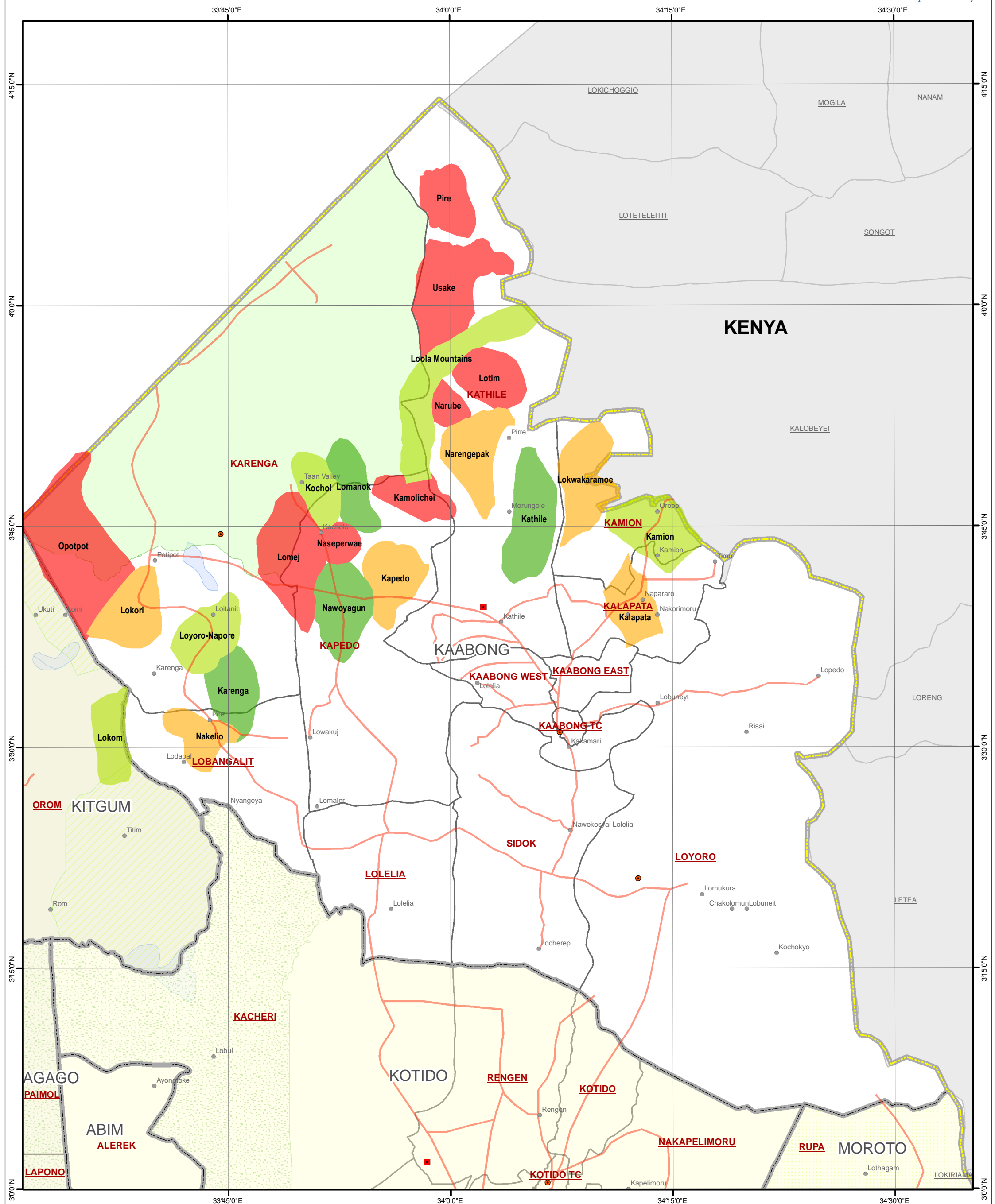


KAABONG DISTRICT: Anticipated Refugee Influx - Dec 2010



Legend

- | | | | |
|--|---|--|---|
| <ul style="list-style-type: none"> ■ District Center ● Town ● Village — Motorable Roads - - - Tracks/Trails | <ul style="list-style-type: none"> ▭ National Boundary ▭ District Boundary ▭ Sub-County Boundary | Landuse Type <ul style="list-style-type: none"> ▨ Forest Reserve ▨ Game Reserve ▨ National Park ▨ Rangeland ▨ Lakes/Water Body | Anticipated refugee Influx <ul style="list-style-type: none"> ■ Least affected ■ Fairly affected ■ Most affected ■ Severely affected |
|--|---|--|---|
- * According to District Health Offices

Data Sources:
 Admin Boundaries - UBOS 2010
 Admin Centers - UBOS 2006
 Town/Villages - Humanitarian Partners
 Road Network - FAO, District, Ocha
 Thematic - Kaabong District, December 2010

Draft
 This map is a work in progress. Please contact the IMU/Ocha as soon as possible with any corrections.

Map Disclaimer:
 The boundaries and names shown on this map do not imply official endorsement or acceptance by the United Nations.

Map Prepare: 23 December, 2010 (IMU/UNOCHA, Kampala)
 File: UG-Vul-63_A3_23Dec2010_Kaabong District anticipated refugee influx map (AM)