



UNHCR
The UN Refugee Agency

EU EMERGENCY RELOCATION MECHANISM

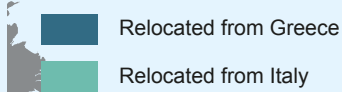
As of 21 September 2016

data.unhcr.org/mediterranean

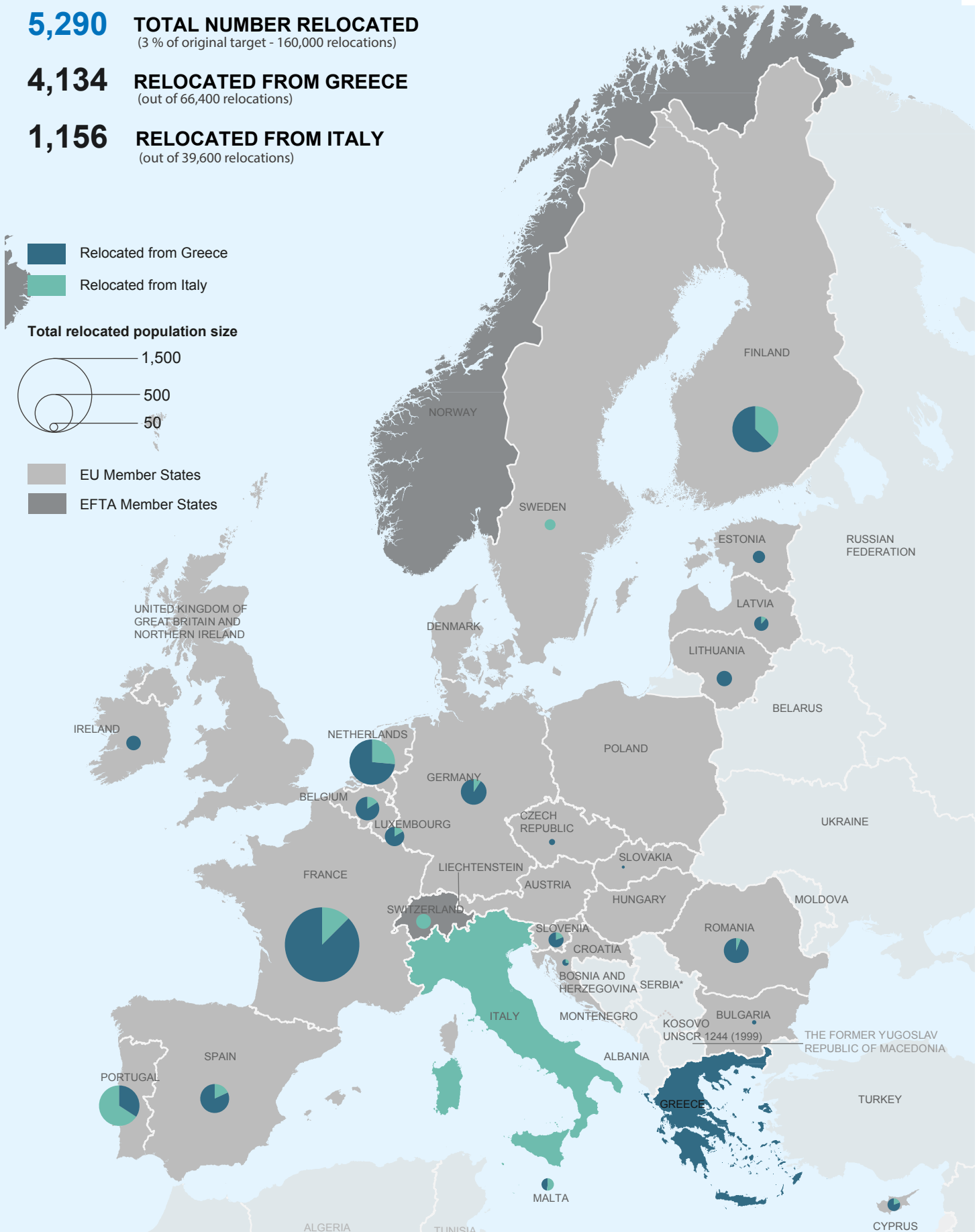
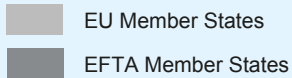
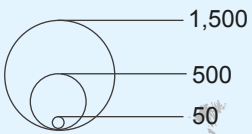
5,290 **TOTAL NUMBER RELOCATED**
(3 % of original target - 160,000 relocations)

4,134 **RELOCATED FROM GREECE**
(out of 66,400 relocations)

1,156 **RELOCATED FROM ITALY**
(out of 39,600 relocations)



Total relocated population size



The EU Relocation Scheme: Based on European Commission proposals, the Council of the European Union (EU) adopted two decisions in September 2015 for the relocation of 160,000 asylum-seekers from frontline EU Member States. As per the decisions, 66,400 persons are to be relocated from Greece and 39,600 from Italy over a two-year period (September 2015-September 2017) to support their asylum systems and provide protection. Under the scheme, nationalities with at least a 75 per cent recognition rate across the EU (based on the previous average quarterly statistics) are eligible for relocation. Once relocated to a participating State, an applicant will be processed through that State's asylum procedures.

Data source: European Commission

*Serbia and Kosovo (S/RES/1244 (1999))

The boundaries and names shown and the designations used on this map do not imply official endorsement or acceptance by the United Nations.

Creation date: 16 Sep 2016