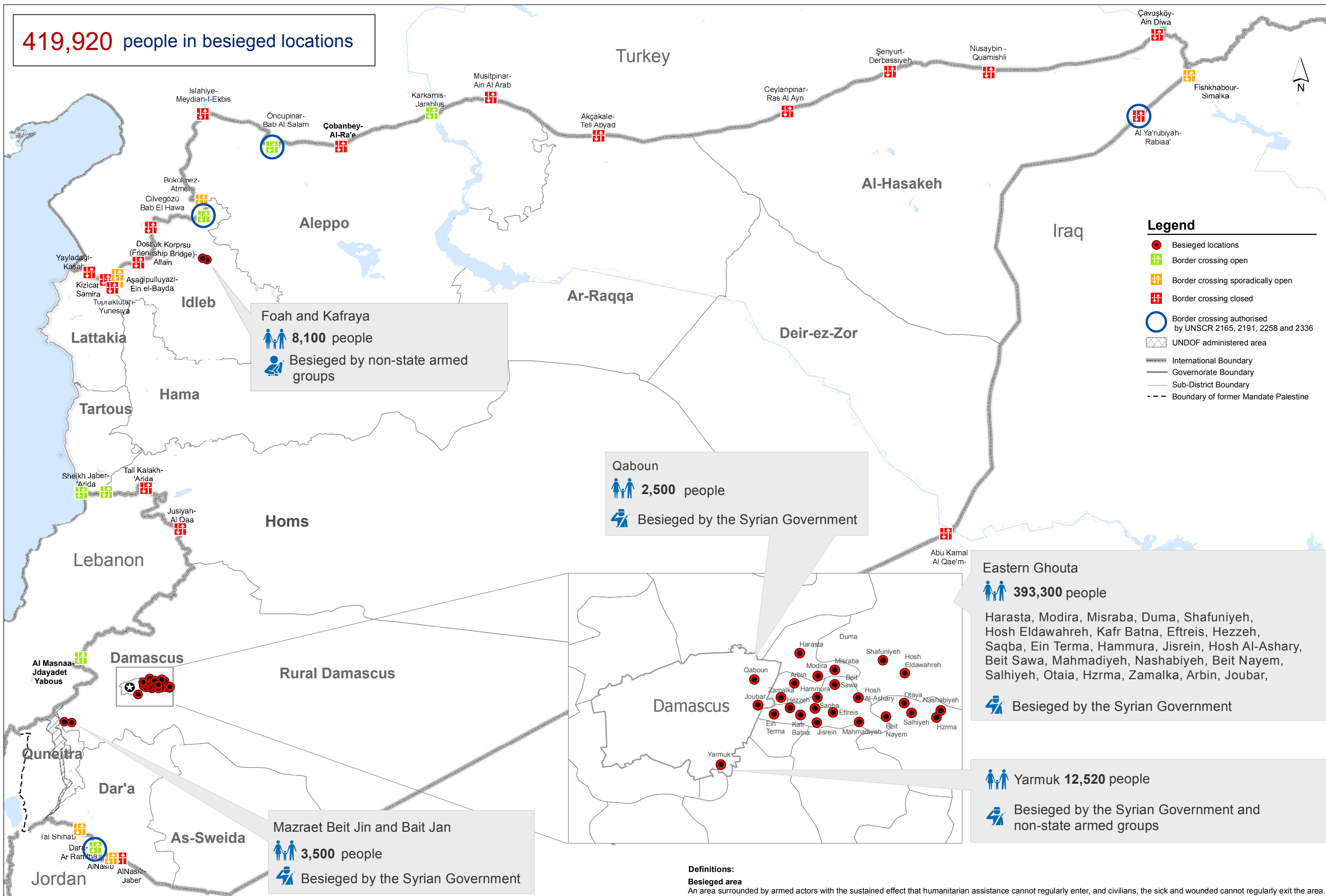


**419,920** people in besieged locations



**Legend**

- Besieged locations
- Border crossing open
- Border crossing sporadically open
- Border crossing closed
- Border crossing authorised by UNSCR 2165, 2191, 2258 and 2336
- UNDOF administered area
- International Boundary
- Governorate Boundary
- Sub-District Boundary
- Boundary of former Mandate Palestine

**Foah and Kafraya**  
**8,100** people  
 Besieged by non-state armed groups

**Qaboun**  
**2,500** people  
 Besieged by the Syrian Government

**Eastern Ghouta**  
**393,300** people  
 Harasta, Modira, Misraba, Duma, Shafuniyeh, Hosh Eldawahreh, Kafr Batna, Eftreis, Hezzeh, Saqba, Ein Terma, Hammura, Jisrein, Hosh Al-Ashary, Beit Sawa, Mahmadiyeh, Nashabiyyeh, Beit Nayem, Salhiyyeh, Otaia, Hzrma, Zamalka, Arbin, Joubar,  
 Besieged by the Syrian Government

**Yarmuk** **12,520** people  
 Besieged by the Syrian Government and non-state armed groups

**Mazraet Beit Jin and Bait Jan**  
**3,500** people  
 Besieged by the Syrian Government

**Definitions:**  
**Besieged area**  
 An area surrounded by armed actors with the sustained effect that humanitarian assistance cannot regularly enter, and civilians, the sick and wounded cannot regularly exit the area.