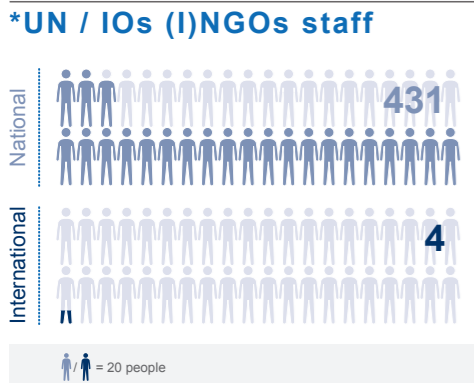
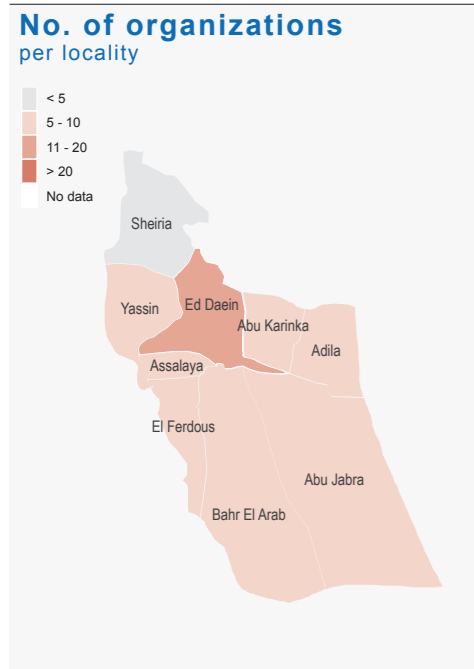
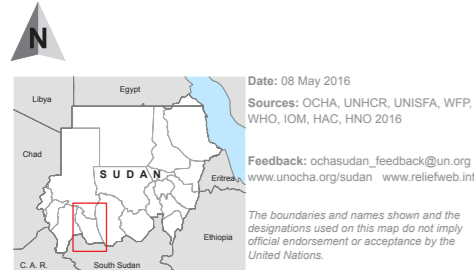


**20** ← 4(UN/IOs)  
4(INGOs)  
12(NNGOs)  
Total number of organizations



- ### Sectors
- Education
  - Emergency Shelter & Non-Food Items
  - Food Security & Livelihoods
  - Health
  - Nutrition
  - Protection
  - Recovery, Return & Reintegration
  - Refugee Multi-Sector
  - Water, Sanitation & Hygiene
  - Others

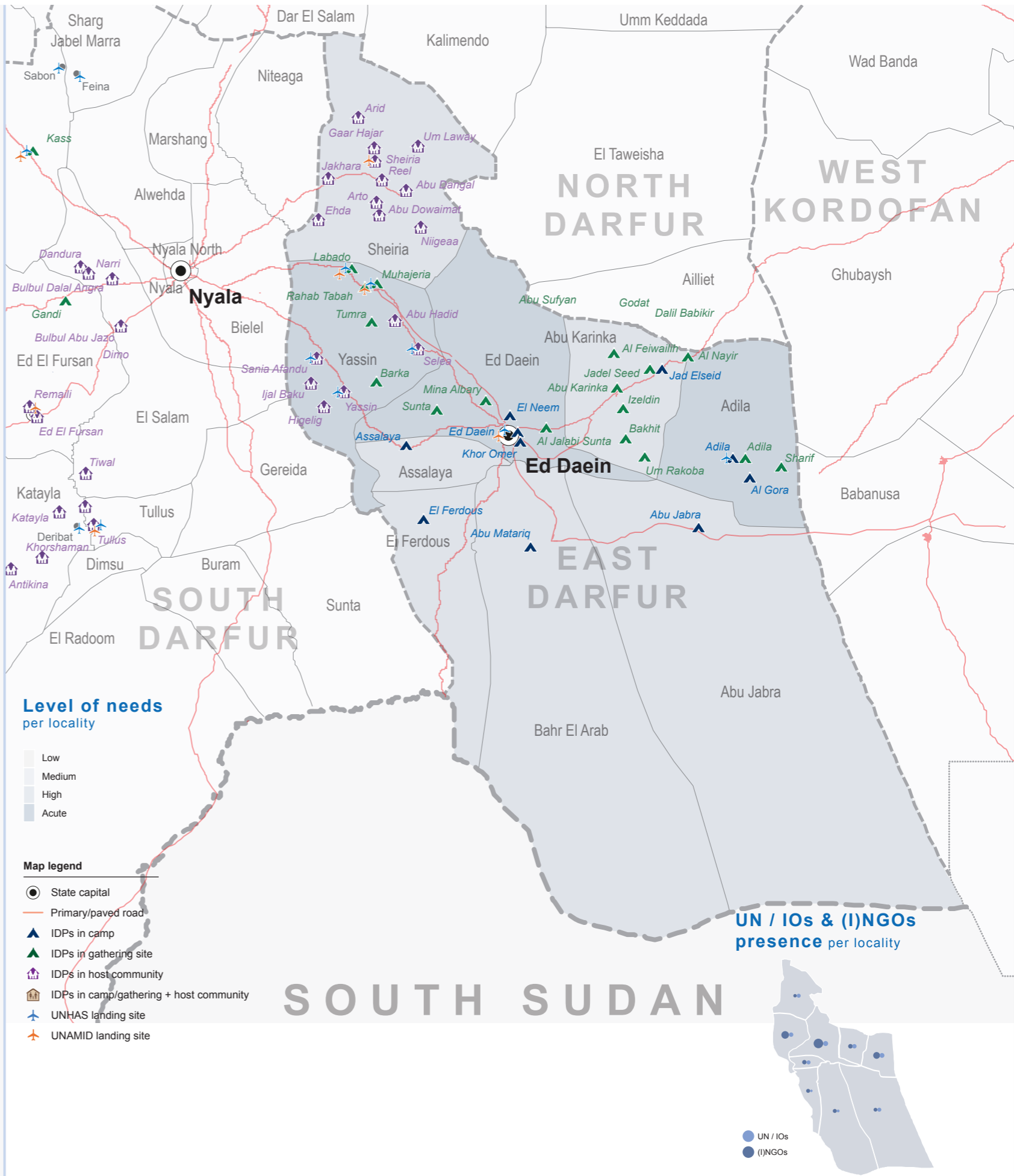
UN United Nations  
IOs International Organization  
(I)NGO International & National Governmental Organization



### Organizations per locality / per sector

No. of organizations per sector: < 5, 5-10, 11-20, > 20, No data

| Localities          | Sectors   | Total |
|---------------------|---|-------|
| <b>ABU JABRA</b>    | UNICEF, SRCS, UMCOR, WFP, UNICEF, UNICEF, MOPD, UMCOR, UNICEF, OCHA   | 5     |
| <b>ABU KARINKA</b>  | UNICEF, UMCOR, CIS, UMCOR, WFP, ARC, UNICEF, WHO, ARC, UNICEF, MOPD, ARC, CIS, MOPD, UMCOR, UNICEF, OCHA  | 6     |
| <b>ADILA</b>        | Mubadiroon, UMCOR, UNICEF, WFP, UMCOR, Merciful Hands, UMCOR, WFP, ZOA, ARC, UNICEF, WHO, ARC, UNICEF, MOPD, ARC, MOPD, UMCOR, UNICEF, OCHA   | 9     |
| <b>ASSALAYA</b>     | UNICEF, ZOA, CIS, UMCOR, WFP, ZOA, ARC, UNICEF, ARC, UNICEF, ARC, UNICEF, ZOA, OCHA   | 5     |
| <b>BAHR EL ARAB</b> | WFP, ZOA, Almasar, Altamas, UMCOR, WFP, Altamas, OCHA   | 5     |
| <b>ED DAEIN</b>     | UMCOR, WFP, White Hand, UNICEF, ZOA, MOPD, UMCOR, White Hand, Almasar, ASSIST, CIS, SWP, SRCS, UMCOR, WFP, ZOA, UNICEF, WHO, UNICEF, WFP, ASSIST, MOPD, CIS, UMCOR, UNICEF, White Hand, ZOA, OCHA | 12    |
| <b>EL FERDOUS</b>   | WFP, Altamas, SRCS, UMCOR, ARC, MOPD, Altamas, ARC, OCHA  | 5     |
| <b>SHERIA</b>       | UNICEF, WFP, CIS, NIDO, UNICEF, MOPD, UNICEF, CIS, MOPD, UNICEF, OCHA   | 4     |
| <b>YASSIN</b>       | MOPD, UNICEF, WFP, White Hand, UMCOR, White Hand, Alshrooq, CIS, MOPD, NIDO, UMCOR, WFP, ARC, REMCO, UNICEF, WHO, ARC, MOPD, UNICEF, ARC, MOPD, UMCOR, UNICEF, White Hand                         | 10    |



### Level of needs per locality

Low, Medium, High, Acute

- ### Map legend
- State capital
  - Primary/paved road
  - IDPs in camp
  - IDPs in gathering site
  - IDPs in host community
  - IDPs in camp/gathering + host community
  - UNHAS landing site
  - UNAMID landing site

UN / IOs & (I)NGOs presence per locality

UN / IOs  
(I)NGOs