

# DESTRUCTION IN LEER, UNITY STATE, SOUTH SUDAN

Analysis with GeoEye-1 Data Acquired 2 February 2014 and WorldView-2 Data Acquired 18 January 2014 and 8 April 2013

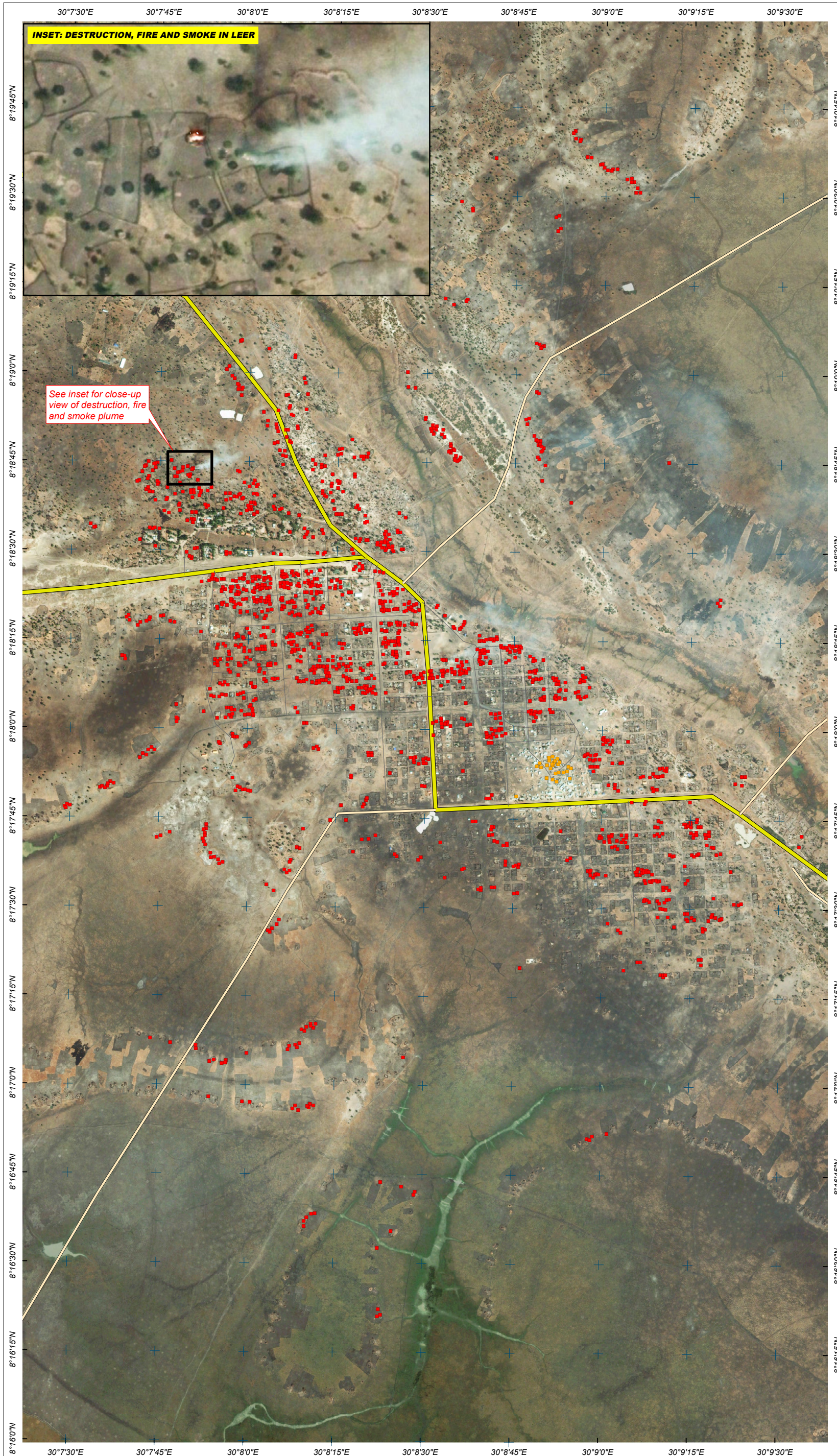
**Complex  
Emergency**

Production Date:  
07-Feb-14

Version 1.0

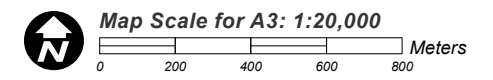


Glide Number:  
CE20131218SSD



This map illustrates satellite-detected areas of destruction in the town of Leer as seen by the GeoEye-1 satellite on 2 February 2014. UNOSAT analysed all structures in the town to verify reports of damage and determined that a large portion of the town has been destroyed, primarily by fire. A total of 1,556 burned or otherwise destroyed structures (including tukuls, other residential structures, and outbuildings) were identified throughout the town, as well as 26 destroyed commercial structures. Several active structural fires and smoke plumes (see inset) are also visible as of 2 February, as are indications of looting. This is a preliminary analysis & has not yet been validated in the field. Please send ground feedback to UNITAR / UNOSAT.

- LEGEND**
- Damaged / Destroyed Commercial Structure
  - Damaged / Destroyed Building
  - Highway/Primary Road
  - Secondary Road
  - Local/Urban Road



Satellite Data (1): GeoEye-1  
Imagery Dates: 2 February 2014  
Resolution: 50 cm  
Copyright: DigitalGlobe  
Source: US Department of State, Humanitarian Information Unit, NextView License  
Satellite Data (2): WorldView-2  
Imagery Date: 18 January 2014  
Copyright: DigitalGlobe  
Source: US Department of State, Humanitarian Information Unit, NextView License  
Satellite Data (2): WorldView-2  
Imagery Date: 8 April 2013  
Copyright: DigitalGlobe  
Source: US Department of State, Humanitarian Information Unit, NextView License  
Road Data : OSM (via bbbike.org)  
Other Data : USGS, UNCS, NASA, NGA  
Analysis : UNITAR / UNOSAT  
Production: UNITAR / UNOSAT  
Analysis conducted with ArcGIS v10

Coordinate System: WGS 1984 UTM Zone 36N  
Projection: Transverse Mercator  
Datum: WGS 1984  
Units: Meter

The depiction and use of boundaries, geographic names and related data shown here are not warranted to be error-free nor do they imply official endorsement or acceptance by the United Nations. UNOSAT is a program of the United Nations Institute for Training and Research (UNITAR), providing satellite imagery and related geographic information, research and analysis to UN humanitarian and development agencies and their implementing partners.

This work by UNITAR/UNOSAT is licensed under a Creative Commons Attribution-NonCommercial-ShareAlike 3.0 Unported License.

**UNITAR**  
United Nations Institute for Training and Research

**UNOSAT**

Contact Information: [unosat@unitar.org](mailto:unosat@unitar.org)  
24/7 Hotline: +41 76 487 4998  
[www.unitar.org/unosat](http://www.unitar.org/unosat)