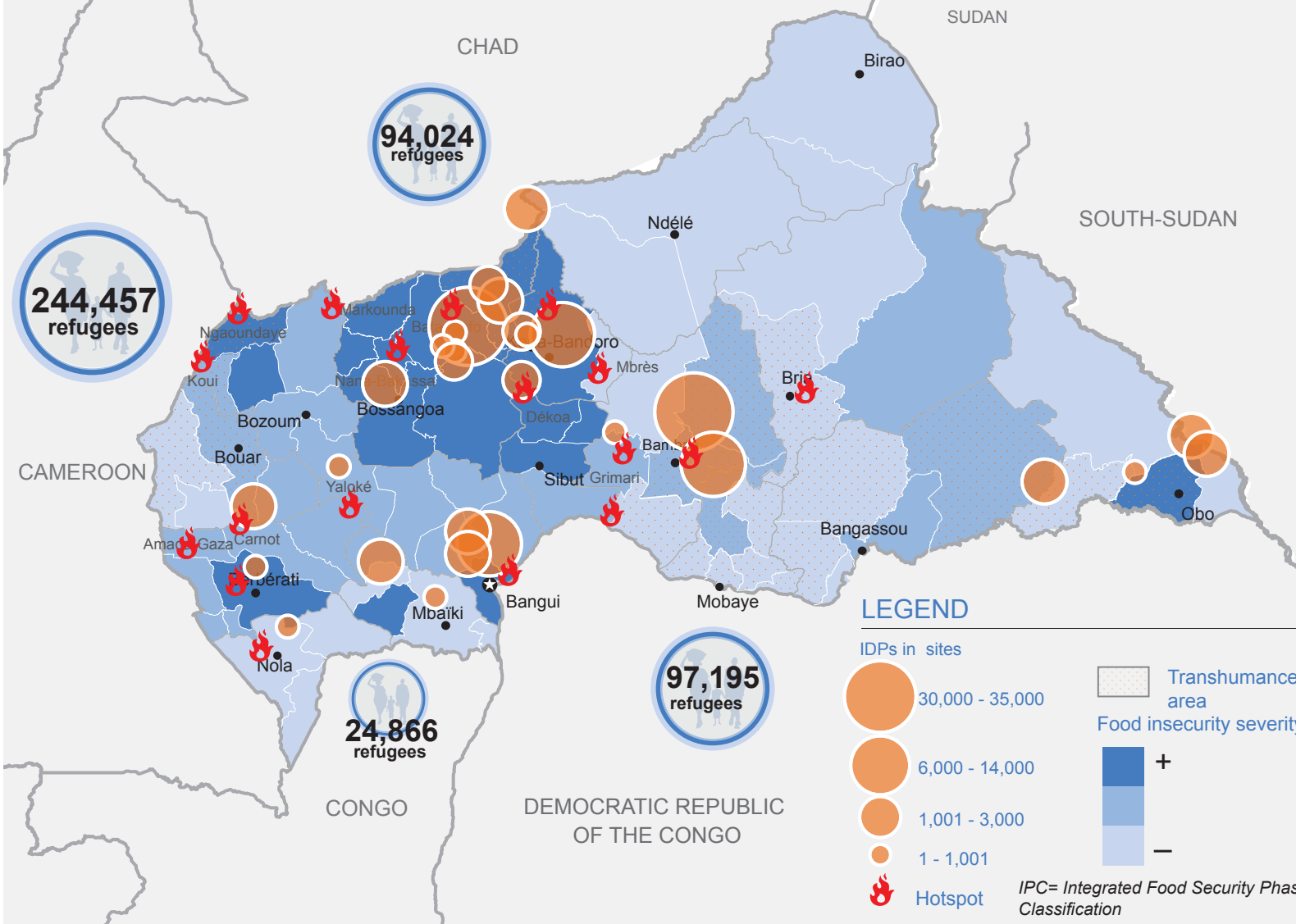
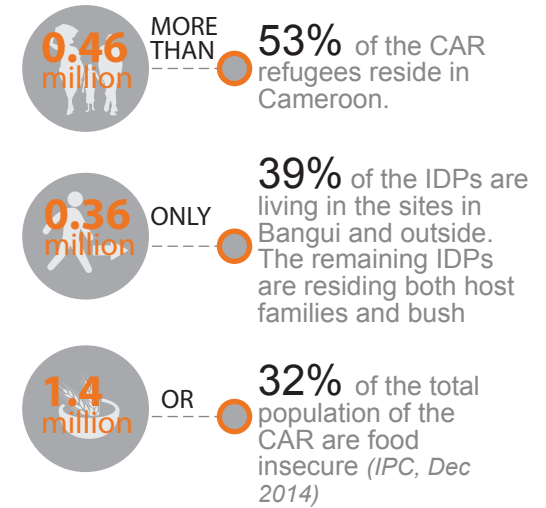




The crisis in CAR has forced more than **1 million** people to flee their homes. Today, more than **426,000** people remain displaced, living in the bush, in camps or with host families. They are among the **2.7 million** Central African who depend on aid to survive, including **1.4 million** people food insecure. Although the overall political situation in the country has improved, continued insecurity due to banditry and sporadic inter communal violence is hindering the ability of aid organizations to reach those in need of assistance and the redeployment of authorities and state basic services throughout the country. Neighbouring Cameroon, Chad, DRC and Congo still host more than **460,000** Central African refugees.

KEY FIGURES



CURRENT HUMANITARIAN SITUATION

Humanitarian needs in CAR continue to surpass available resources and humanitarian partners delivering life-saving assistance are reporting that operations are shutting down due to lack of funding.

While the raining season sets in across the country, which enables the planting season to commence, high pressure is applied by herders on the meager agriculture zones following the diversion of transhumance passage corridors resulting from the tense socio-political situation.

Since November 2014, transhumance related conflicts are one of the main causes of displacement. Cases of killings, destruction of farms and houses are reported along the transhumance corridors.