

# UPDATE: AL ZAATARI REFUGEE CAMP MAFRAQ GOVERNORATE, JORDAN

Analysis WorldView-2 Data Acquired 10 July 2013 and WorldView-1 Data Acquired 16 June 2013

This map illustrates satellite-detected shelters and other buildings at the Al Zaatari refugee camp in Mafraq Governorate, Jordan. As of 10 July 2013 a total of 27,101 shelters were detected as well as 1,724 infrastructure and support buildings within the 531.8 hectares of the camp. Between 16 June 2013 and 10 July 2013, a total of 4,070 shelters closed or were moved, and a total of 3,049 shelters were constructed, and the number of shelters has

thus decreased by about 895 since the previous UNITAR/UNOSAT assessment. This indicates an approximate 3% decrease in the number of shelters between 16 June and 10 July 2013. This is a preliminary analysis and has not yet been validated in the field; structure locations subject to a spatial error margin of +/- three meters. Please send ground feedback to UNITAR/UNOSAT.

Refugee Camp

Production Date:  
15/07/2013

Version 1.0

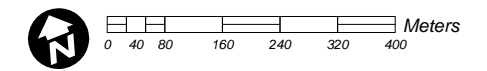
Activation Number:  
CE-2011-0704-SYR



## LEGEND

- Shelter structure (10 July 2013)
- Shelter structure (16 June 2013)
- Camp infrastructure building
- Total Camp Extent
- Distric Boundaries

Map Scale for A3: 1:10,500



Satellite Data (1): WorldView-2  
Imagery Dates: 10 July 2013  
Resolution: 50 cm  
Copyright: DigitalGlobe  
Source: European Space Imaging  
Satellite Data (2): WorldView-1  
Imagery Dates: 16 June 2013  
Resolution: 50 cm  
Copyright: DigitalGlobe  
Source: European Space Imaging  
Analysis: UNITAR / UNOSAT  
Production: UNITAR / UNOSAT  
Analysis conducted with ArcGIS v10.1

Coordinate System: WGS 1984 UTM Zone 37N  
Projection: Transverse Mercator  
Datum: WGS 1984  
Units: Meter

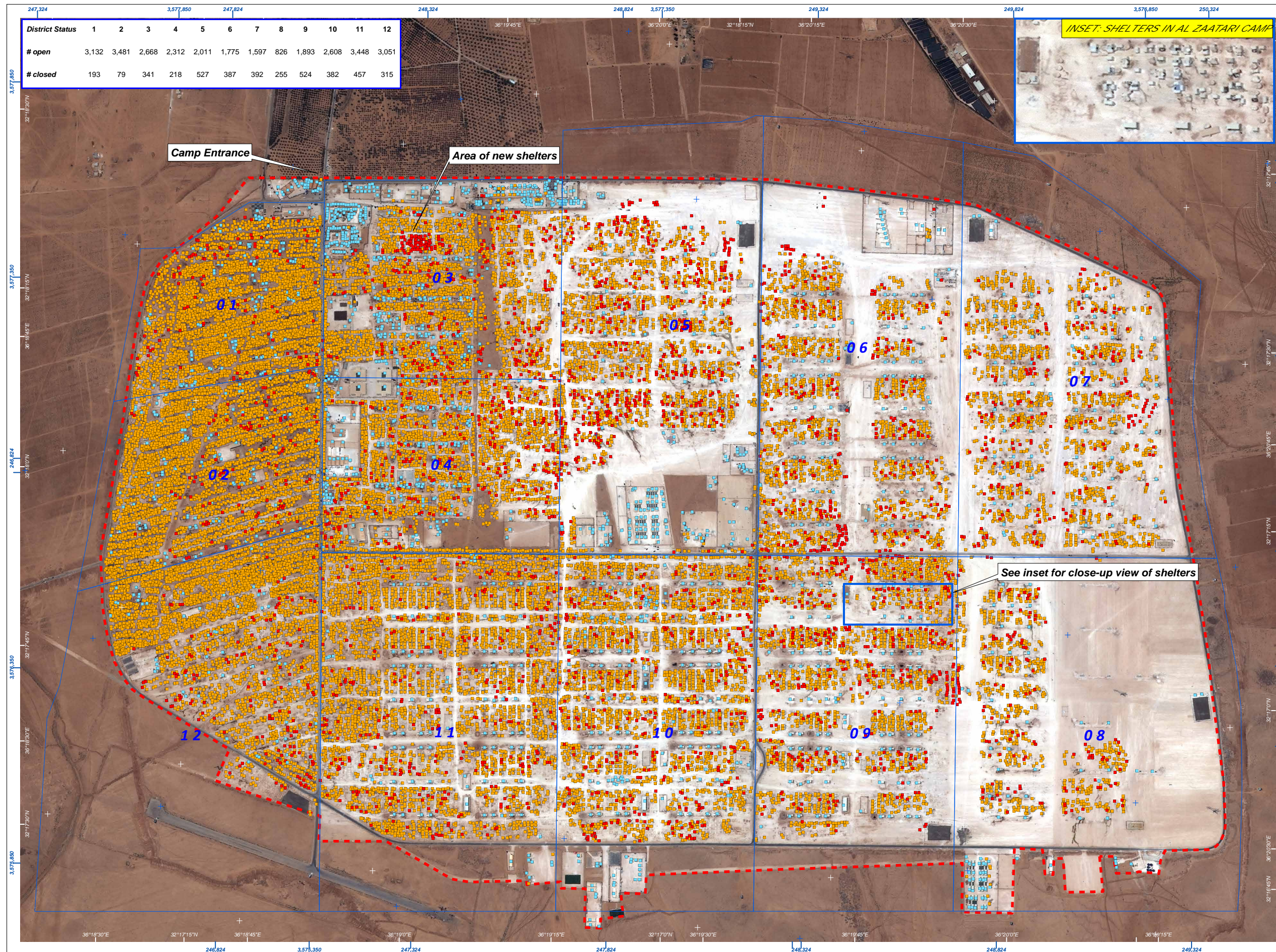
The depiction and use of boundaries, geographic names and related data shown here are not warranted to be error-free nor do they imply official endorsement or acceptance by the United Nations. UNOSAT is a program of the United Nations Institute for Training and Research (UNITAR), providing satellite imagery and related geographic information, research and analysis to UN humanitarian and development agencies and their implementing partners.

This work by UNITAR/UNOSAT is licensed under a Creative Commons Attribution-NonCommercial-ShareAlike 3.0 Unported License.



# UNOSAT

Contact Information: [unosat@unitar.org](mailto:unosat@unitar.org)  
24/7 Hotline: +41 76 487 4998  
[www.unitar.org/unosat](http://www.unitar.org/unosat)



District Status	1	2	3	4	5	6	7	8	9	10	11	12
# open	3,132	3,481	2,668	2,312	2,011	1,775	1,597	826	1,893	2,608	3,448	3,051
# closed	193	79	341	218	527	387	392	255	524	382	457	315

Camp Entrance

Area of new shelters

INSET: SHELTERS IN AL ZAATARI CAMP

See inset for close-up view of shelters