



unitar

United Nations Institute for Training and Research

UNOSAT

**Complex
Emergency**



Production Date: 24/12/2013

Version 1.0

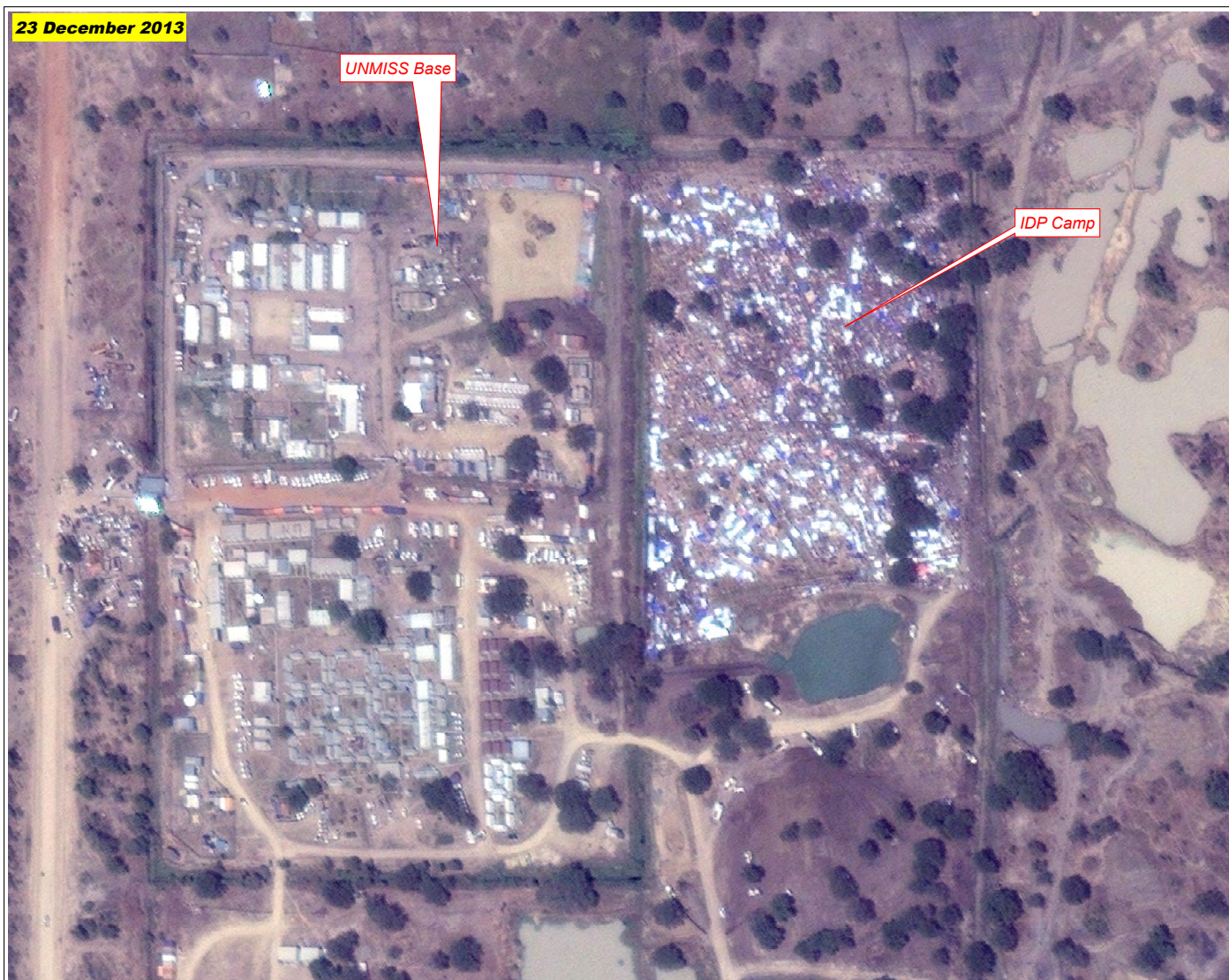
Activation Number:

CE20131218SSD

SITUATION UPDATE: IDPS IN UNMISS BASE, BOR, JONGLEI STATE, SOUTH SUDAN

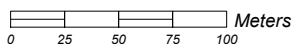


This map illustrates the camp for internally displaced persons (IDPs) that was created adjacent to the base for the United Nations Mission in South Sudan (UNMISS) in the town of Bor, South Sudan. Imaged by the WorldView-2 satellite on 23 December 2013, the IDP camp hosts about 14,000 persons and the adjacent UNMISS base includes troops from India, Nepal, South Korea, and Rwanda. A large area of standing water is visible immediately to the east of the IDP area. This is a preliminary analysis & has not yet been validated in the field. Please send ground feedback to UNITAR / UNOSAT.



Center Coordinates: 31°36'19.43"E 6°11'40.84"N

Map Scale for A4: 1:3,500



UNITAR / UNOSAT

unosat@unitar.org

Palais des Nations,

Geneva, Switzerland

T: +41 22 767 4020

24/7 hotline: +41 76 487 4998

www.unitar.org/unosat

Satellite Data (1): WorldView-2
Imagery Dates: 23 December 2013
Resolution: 50 cm
Copyright: DigitalGlobe
Source: US Department of State,
Humanitarian Information Unit,
NextView License
Other Data: USGS, NASA, NGA

Analysis : UNITAR / UNOSAT
Production: UNITAR / UNOSAT
Analysis conducted with ArcGIS
v10.1

The depiction and use of boundaries, geographic names and related data shown here are not warranted to be error-free nor do they imply official endorsement or acceptance by the United Nations. UNOSAT is a program of the United Nations Institute for Training and Research (UNITAR), providing satellite imagery and related geographic information, research and analysis to UN humanitarian and development agencies and their implementing partners.

This work by UNITAR/UNOSAT is licensed under a Creative Commons Attribution-NonCommercial-ShareAlike 3.0 Unported License.

Copyright: DigitalGlobe 2013