



unitar
United Nations Institute for Training and Research

UNOSAT

Production Date: 23/12/2013
Version 1.0
Activation Number: CE20131218SSD



IDPS IN UNMISS BASE, JUBA, CENTRAL EQUATORIA, SOUTH SUDAN

As seen in Pleiades imagery collected 20 December 2013



Copyright: CNES 2013 - Distribution Astrium Services / Spot Image

A portion of the United Nations Mission in South Sudan (UNMISS) base at Juba airport, with multiple areas of IDPs visible as well as heavy foot traffic. See Figure 1 (next page) for comparison image and further information.

Center Coordinates: 31°32'41.08"E 5°1'43.51"N

UNITAR / UNOSAT

unosat@unitar.org

Palais des Nations,

Geneva, Switzerland

T: +41 22 767 4020

24/7 hotline: +41 76 487 4998

www.unitar.org/unosat

Satellite Data (1): Pleiades
Imagery Dates: 20 December 2013
Resolution: 50 cm
Copyright: CNES 2013 - Distribution
Astrum Services / Spot Image
Source: Astrum Services
Satellite Data (1): Pleiades
Imagery Dates: 18 December 2013

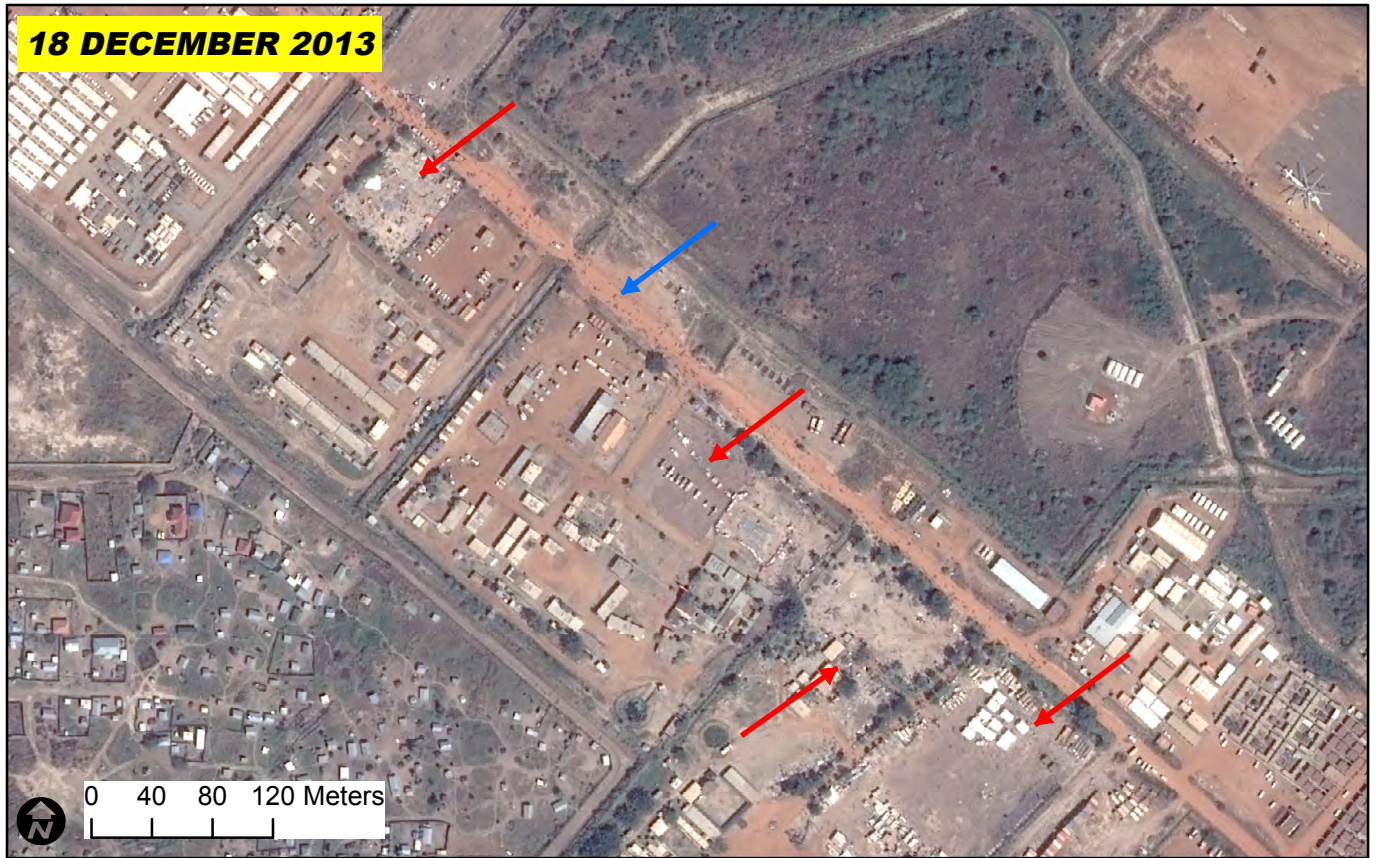
Resolution: 50 cm
Copyright: CNES 2013 - Distribution
Astrum Services / Spot Image
Source: Astrum Services
Road Data: Google Map Maker /
OSM / ESRI
Other Data: USGS, UNCS, NASA,
NGA

Analysis : UNITAR / UNOSAT
Production: UNITAR / UNOSAT
Analysis conducted with ArcGIS
v10.1

The depiction and use of boundaries, geographic names and related data shown here are not warranted to be error-free nor do they imply official endorsement or acceptance by the United Nations. UNOSAT is a program of the United Nations Institute for Training and Research (UNITAR), providing satellite imagery and related geographic information, research and analysis to UN humanitarian and development agencies and their implementing partners.

This work by UNITAR/UNOSAT is licensed under a Creative Commons Attribution-NonCommercial-ShareAlike 3.0 Unported License.

Figure 1: IDP Areas and Foot Traffic in UNMISS Base



An area of the UNMISS base at Juba airport as of 18 December 2013 (top) as IDPs began to arrive and settle in designated areas (red arrows). By 20 December (bottom) IDP areas (red arrows) feature multiple temporary and makeshift shelters, and in both images significant foot traffic along the main road in the base is visible (blue arrows).

This is a preliminary assessment and has not yet been validated in the field. Please send feedback to UNITAR/UNOSAT at the contact information below.

UNOSAT Contact:

E-mail: unosat@unitar.org

T: +41 22 767 4020 (UNOSAT Operations)

T: +41 22 767 4137 (UNOSAT Management)

F: +41 22 766 9145

24/7 hotline: +41 76 487 4998



UNOSAT

Post address

UNOSAT / UNITAR

Palais des Nations

CH-1211 Geneva 10

Switzerland

Visiting address

UNOSAT / UNITAR

International Environment House

Chemin des Anémones 11-13

CH-1219 Châtelaine, Geneva - Switzerland

Send us GEO-PICTURES from disasters worldwide. Scan QR code or download free UN-ASIGN APP here:



<http://download.ansur.no/assign-un.apk>



<https://itunes.apple.com/app/un-assign/id507125097?mt=8>