



**unitar**  
United Nations Institute for Training and Research

# UNOSAT

Production Date: 11/11/2014

Version 1.0

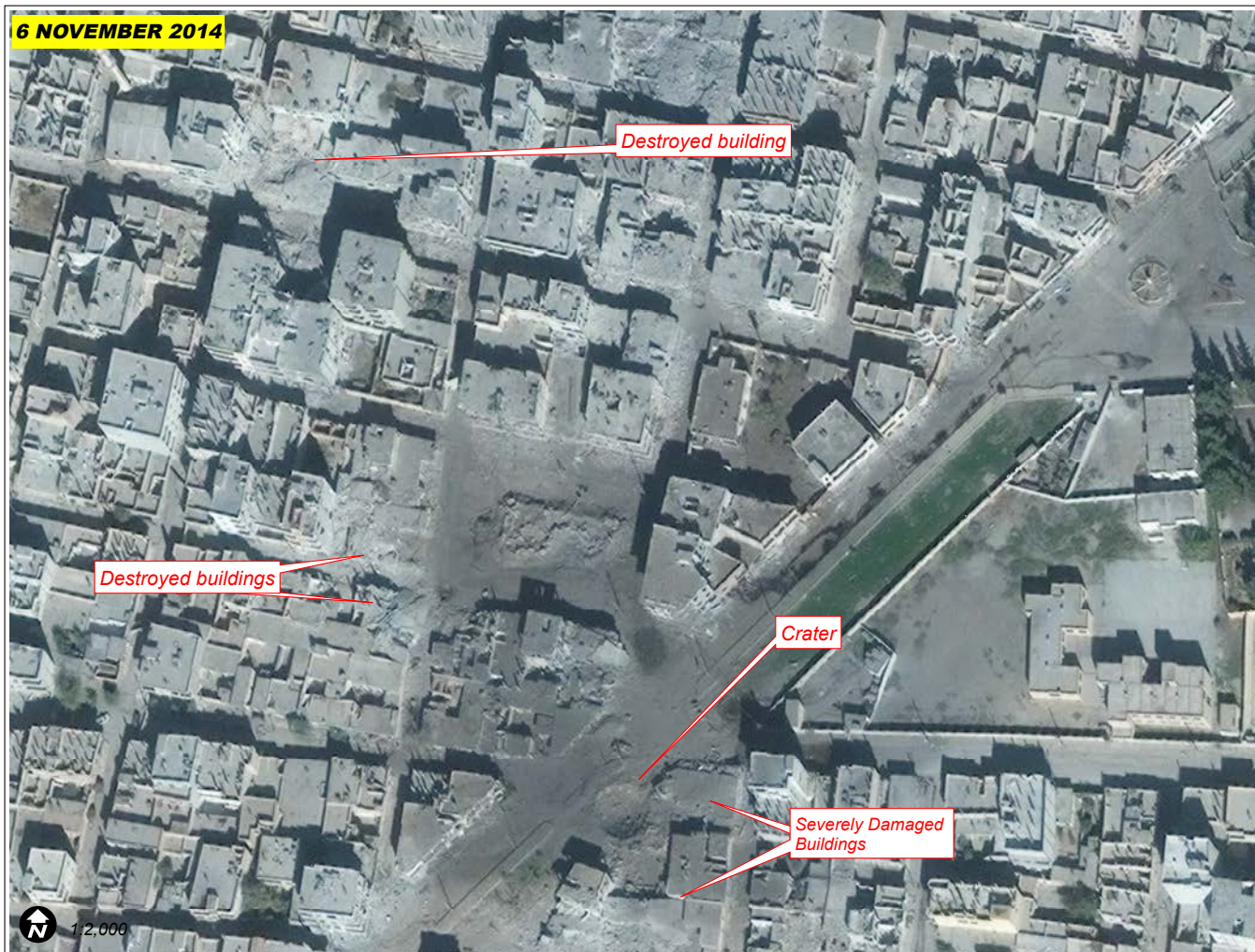
Activation Number:

CE20130604SYR



## SITUATION UPDATE FOR KOBANI, ALEPPO GOVERNORATE, SYRIAN ARAB REPUBLIC

Based on Satellite Imagery Acquired 1 & 6 November 2014



Copyright: 2014 DigitalGlobe

The image shows destruction in a portion of the city of Kobani. Several buildings appear destroyed or heavily damaged; a large crater is also visible on the side of one of Kobani's main streets.

Center Coordinates:  
38°21'7.79"E 36°53'33.74"N

This report provides an overview of the situation in the town of Kobani as of 6 November 2014, using high resolution imagery collected by the WorldView-3 satellite and compared with satellite imagery collected 22 October and 6 September. In support of the implementation of UN Security Council resolutions 2139 (2014) and 2165 (2014), UNOSAT reviewed the town for indicators of damage and destruction and signs of ongoing fighting and displaced civilians. Imagery shows widespread damage along the city and numerous destroyed and severely damaged structures and craters caused by munitions impacts. Roadblocks were detected and vehicle traffic is almost entirely absent throughout the town. Using imagery collected 22 October and 1 November, UNOSAT also identified the presence of an increased number of refugees in the nearby Turkish town of Suruc. This is a preliminary analysis and has not yet been validated in the field. Please send ground feedback to UNITAR / UNOSAT.

**UNITAR / UNOSAT**

**unosat@unitar.org**

**Palais des Nations,**

**Geneva, Switzerland**

**T: +41 22 767 4020**

**24/7 hotline: +41 76 487 4998**

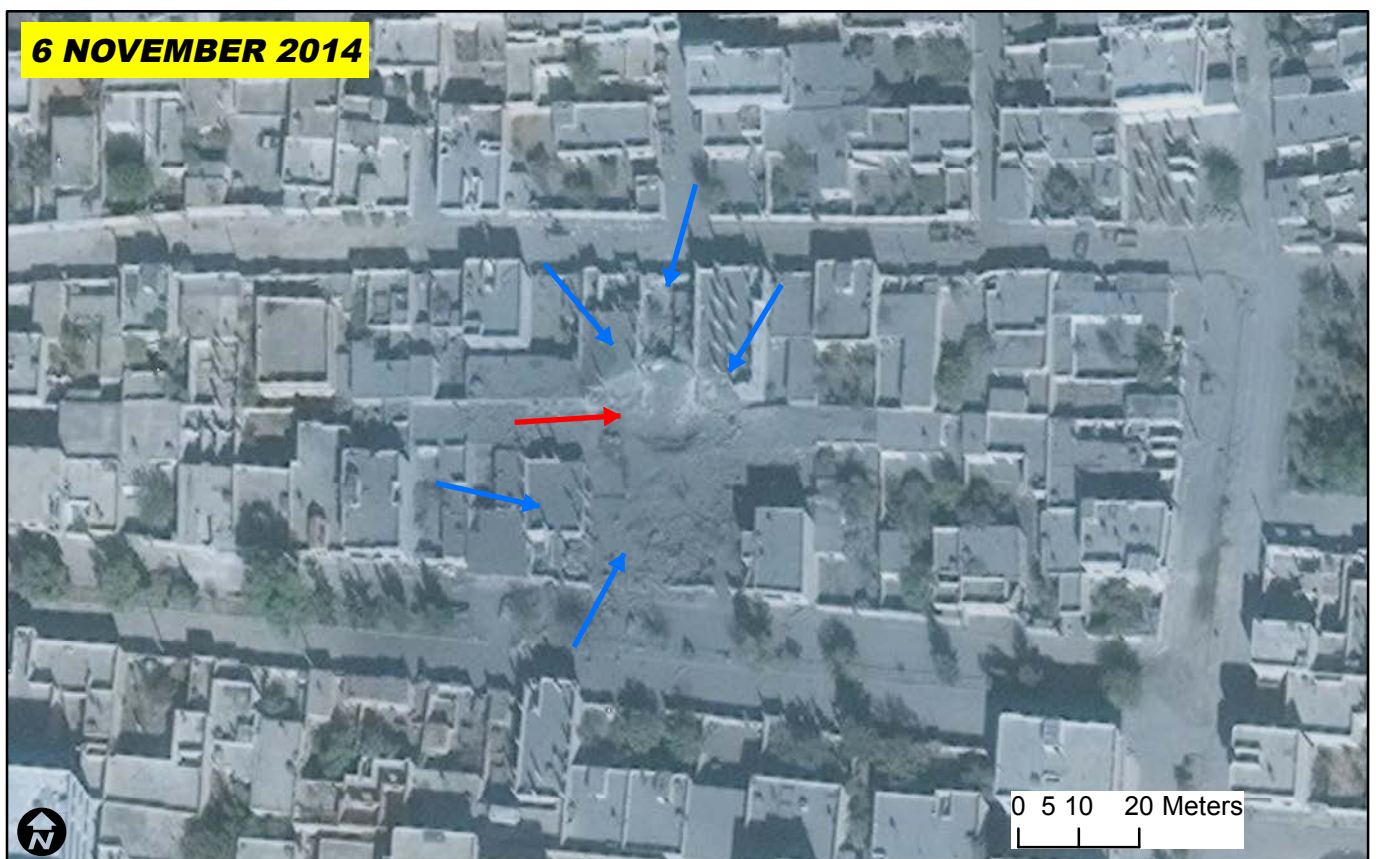
**www.unitar.org/unosat**

Satellite Data (1): WorldView-3  
Imagery Dates: 1 & 6 November 2014  
Resolution: 40 cm  
Copyright: DigitalGlobe, Inc.  
Satellite Data (2): WorldView-2  
Imagery Date: 6 September & 22 October 2014  
Copyright: DigitalGlobe, Inc.  
Resolution: 50 cm

Other Data: USGS, UNCS, NASA, NGA  
Analysis: UNITAR / UNOSAT  
Production: UNITAR / UNOSAT  
Analysis conducted with ArcGIS v10.2  
Coordinate System: WGS 1984 UTM Zone 37N  
Projection: Transverse Mercator  
Datum: WGS 1984  
Units: Meter

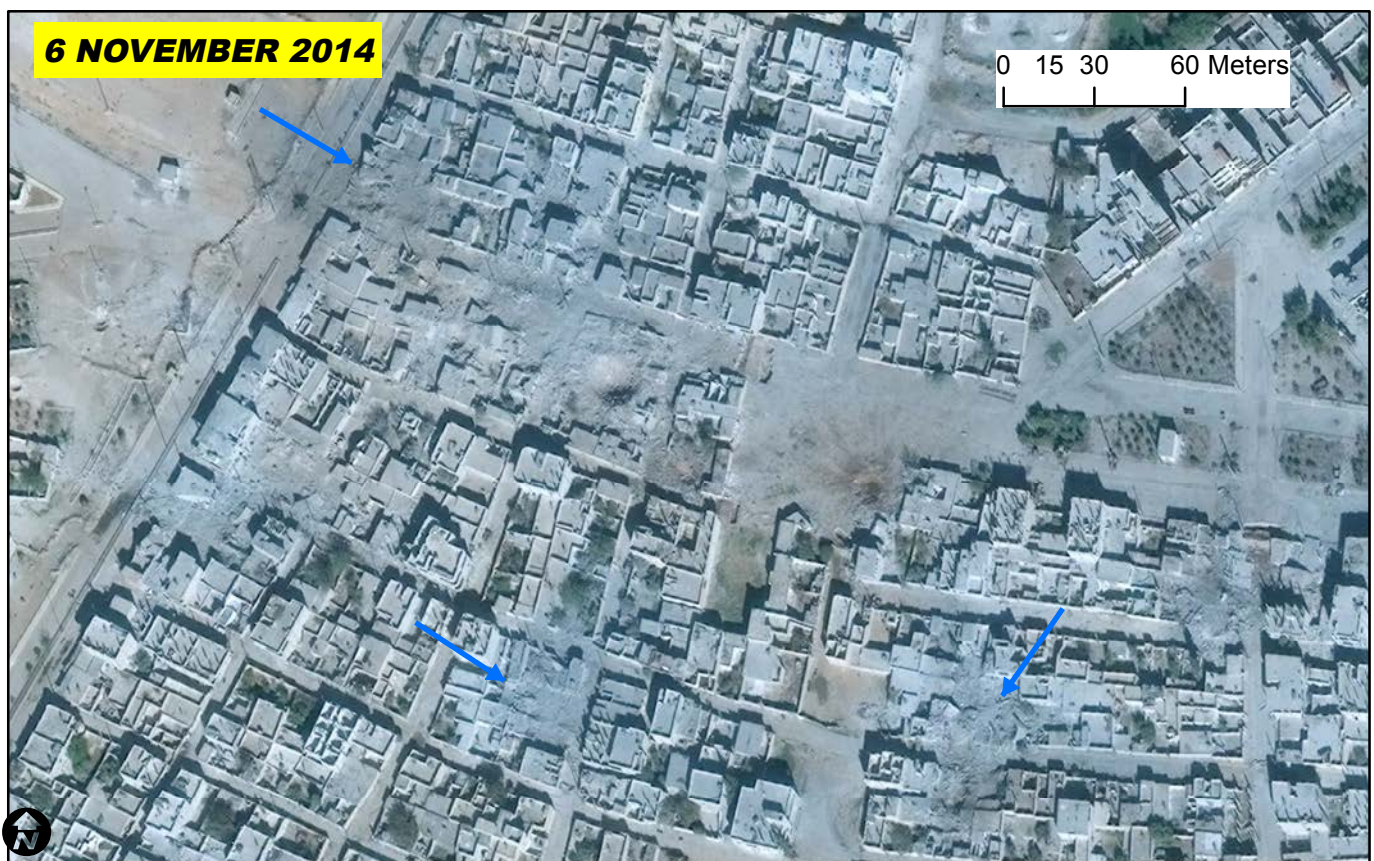
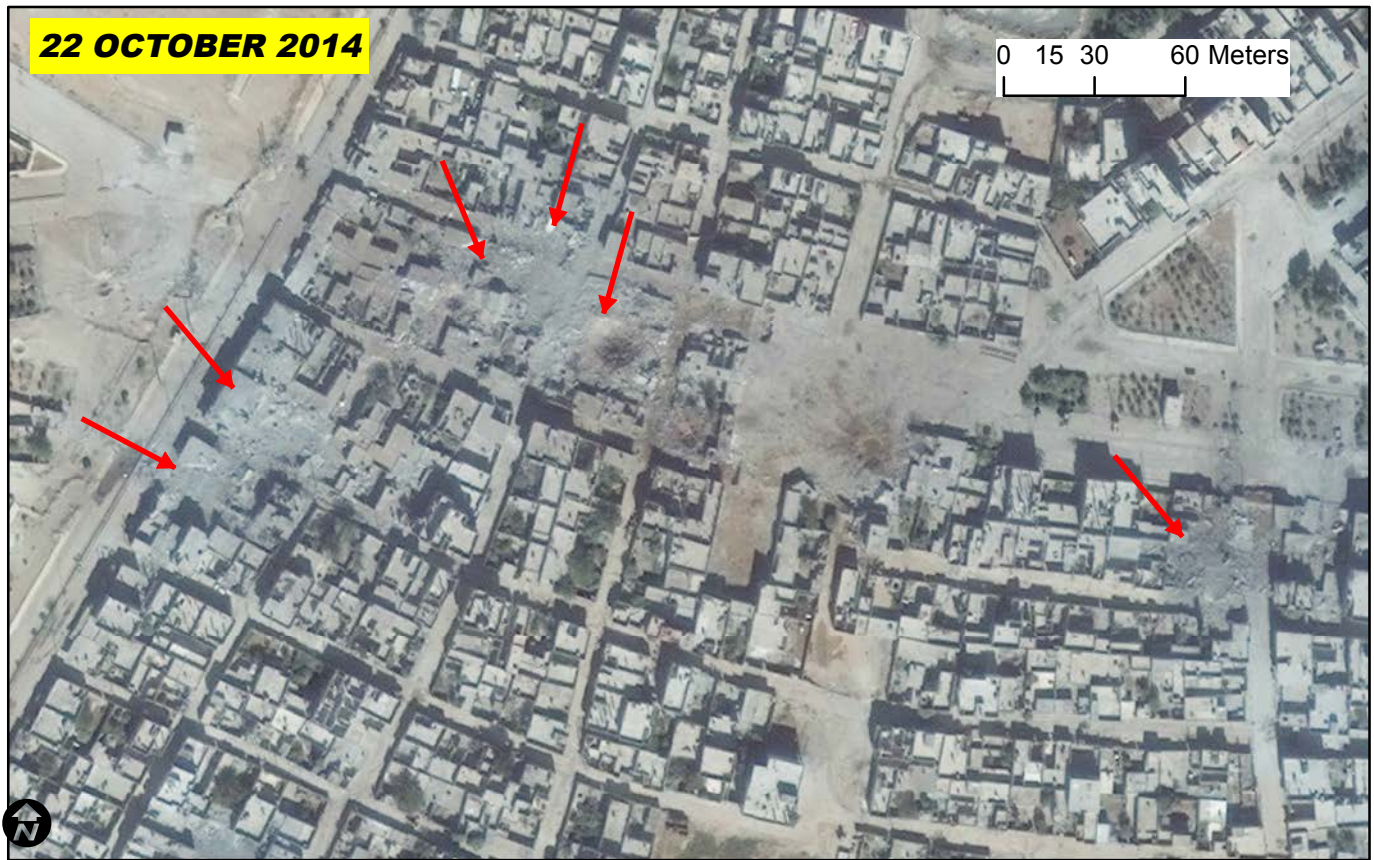
The depiction and use of boundaries, geographic names and related data shown here are not warranted to be error-free nor do they imply official endorsement or acceptance by the United Nations. UNOSAT is a program of the United Nations Institute for Training and Research (UNITAR), providing satellite imagery and related geographic information, research and analysis to UN humanitarian and development agencies and their implementing partners. This work by UNITAR/UNOSAT is licensed under a Creative Commons Attribution-NonCommercial-ShareAlike 3.0 Unported License.

**Figure 1: Destroyed and damaged structures in Kobani**



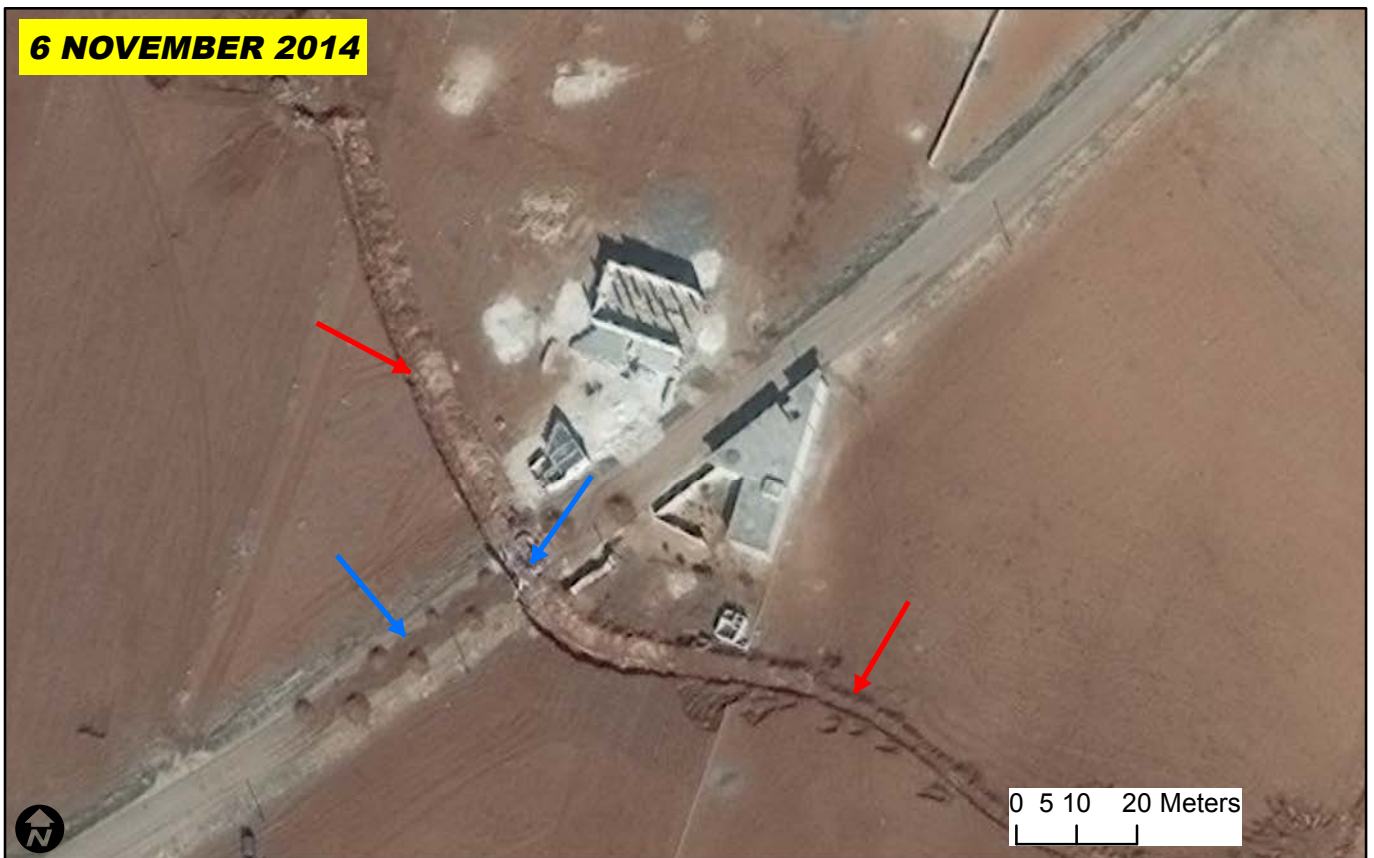
*The figure shows a portion of the eastern part of the town of Kobani where a large crater is visible (read arrow) and several buildings around it are destroyed or severely damaged (blue arrows), possibly by an air strike. Images copyright 2014 DigitalGlobe.*

**Figure 2: Destroyed and damaged structures in Kobani**



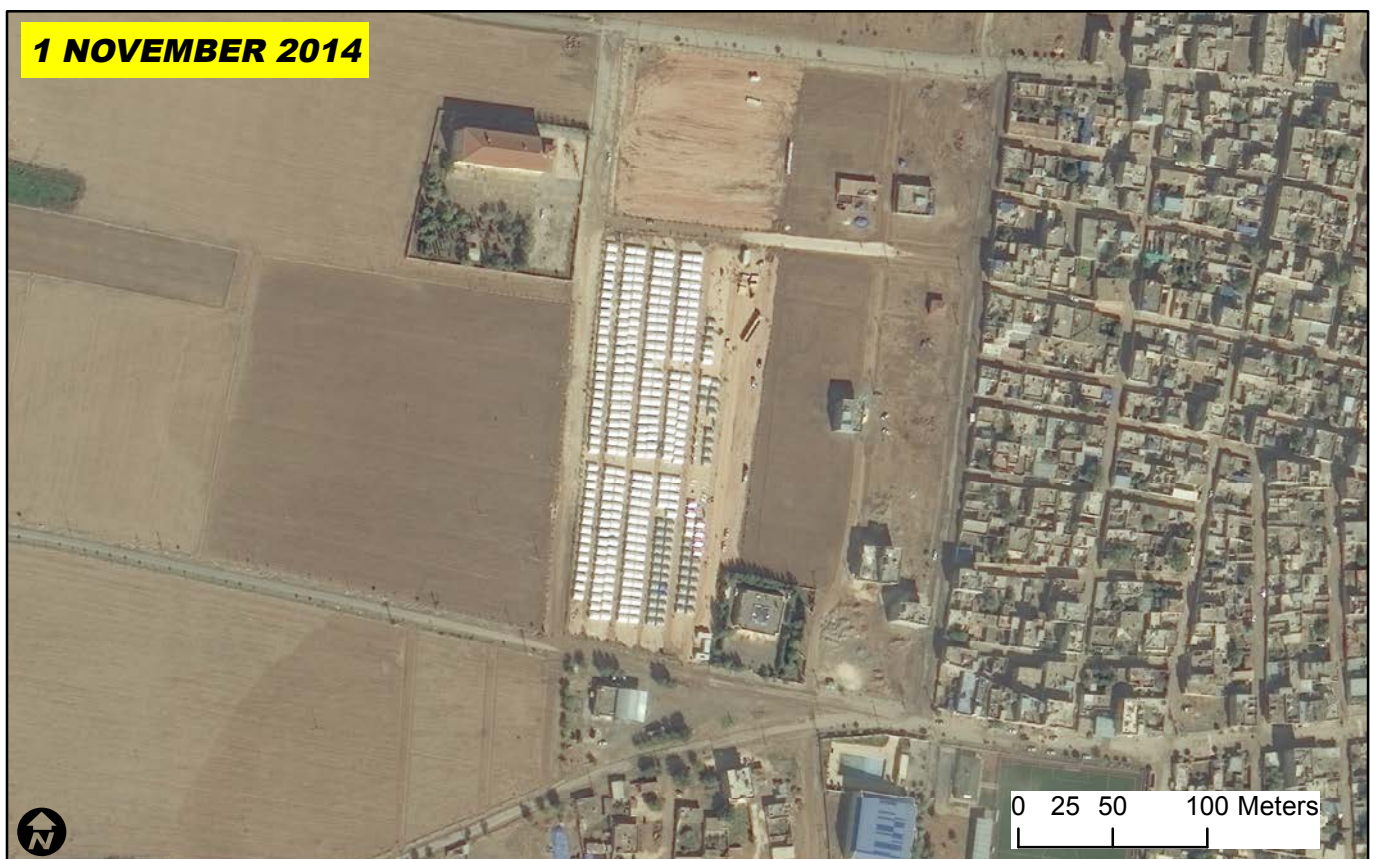
The figure shows a portion of the northern part of the town of Kobani that was heavily damaged by 22 October as imagery shows multiple buildings destroyed or severely damaged (red arrows). New imagery collected on 6 November shows that bombardments have continued over the area since 22 October and have caused the destruction of several structures (blue arrows). Images copyright 2014 DigitalGlobe.

**Figure 3: Access control points**



UNOSAT analysis also indicates ongoing humanitarian access constraints as imagery shows roadblocks and control points placed along the roads leading to Kobane (blue arrows). A probable fortified fighting line is also visible in this figure (red arrows). Images copyright 2014 DigitalGlobe.

**Figure 4: Displaced civilians**



Satellite imagery collected 22 October over the Turkish town of Suruc (11 km north east of Kobane) shows a total of 834 tent shelters distributed in 4 different refugee camps. This figure shows an additional refugee camp that is under construction and as of 1 November it has been occupied by a total of 287 new tent shelters. This means an increase of 32 % in the number of tent shelters in Suruc between 22 October and 1 November. Images copyright 2014 DigitalGlobe.

---

*This is a preliminary assessment and has not yet been validated in the field. Please send feedback to UNITAR/UNOSAT at the contact information below.*

**UNOSAT Contact:**

E-mail: [unosat@unitar.org](mailto:unosat@unitar.org)

T: +41 22 767 4020 (UNOSAT Operations)

T: +41 22 767 4137 (UNOSAT Management)

F: +41 22 766 9145

24/7 hotline: +41 76 487 4998



**unitar**

United Nations Institute for Training and Research

# UNOSAT

**Post address**

**UNOSAT / UNITAR**

Palais des Nations

CH-1211 Geneva 10

Switzerland

**Visiting address**

**UNOSAT / UNITAR**

International Environment House

Chemin des Anémones 11-13

CH-1219 Châtelaine, Geneva - Switzerland

*Send us GEO-PICTURES from disasters worldwide. Scan QR code or download free UN-ASIGN APP here:*



<http://download.ansur.no/assign-un.apk>



<https://itunes.apple.com/app/un-assign/id507125097?mt=8>