

# DAMAGE ASSESSMENT OF DEIR EZ ZOR, DEIR EZ ZOR GOVERNORATE, SYRIA

Analysis with Pleiades Data Acquired 13 May 2014 & 24 October 2013 and WorldView-1 Data Acquired 06 December 2010

This map illustrates satellite-detected damage and destruction in a portion of the city of Deir Ez Zor, Deir Ez Zor Governorate, Syria. Using satellite imagery acquired 13 May 2014, 24 October 2013, and 06 December 2010, UNITAR / UNOSAT identified a total of 3,004 affected structures within the area of this map. Approximately 417 of these were destroyed, 1,023 severely damaged, and 1,564 moderately damaged. The city-wide analysis of Deir Ez Zor revealed a total of 3,112 affected structures, of which 454 were destroyed,

1,045 severely damaged, and 1,613 moderately damaged. While much of the city was damaged by 24 October 2013, 1,149 structures were newly damaged and 106 structures experienced an increase in damage between that date and 13 May 2014. This analysis was done of the REACH initiative for the U.S. Office of Foreign Disaster Assistance. This is a preliminary analysis and has not yet been validated in the field. Please send ground feedback to UNITAR / UNOSAT.

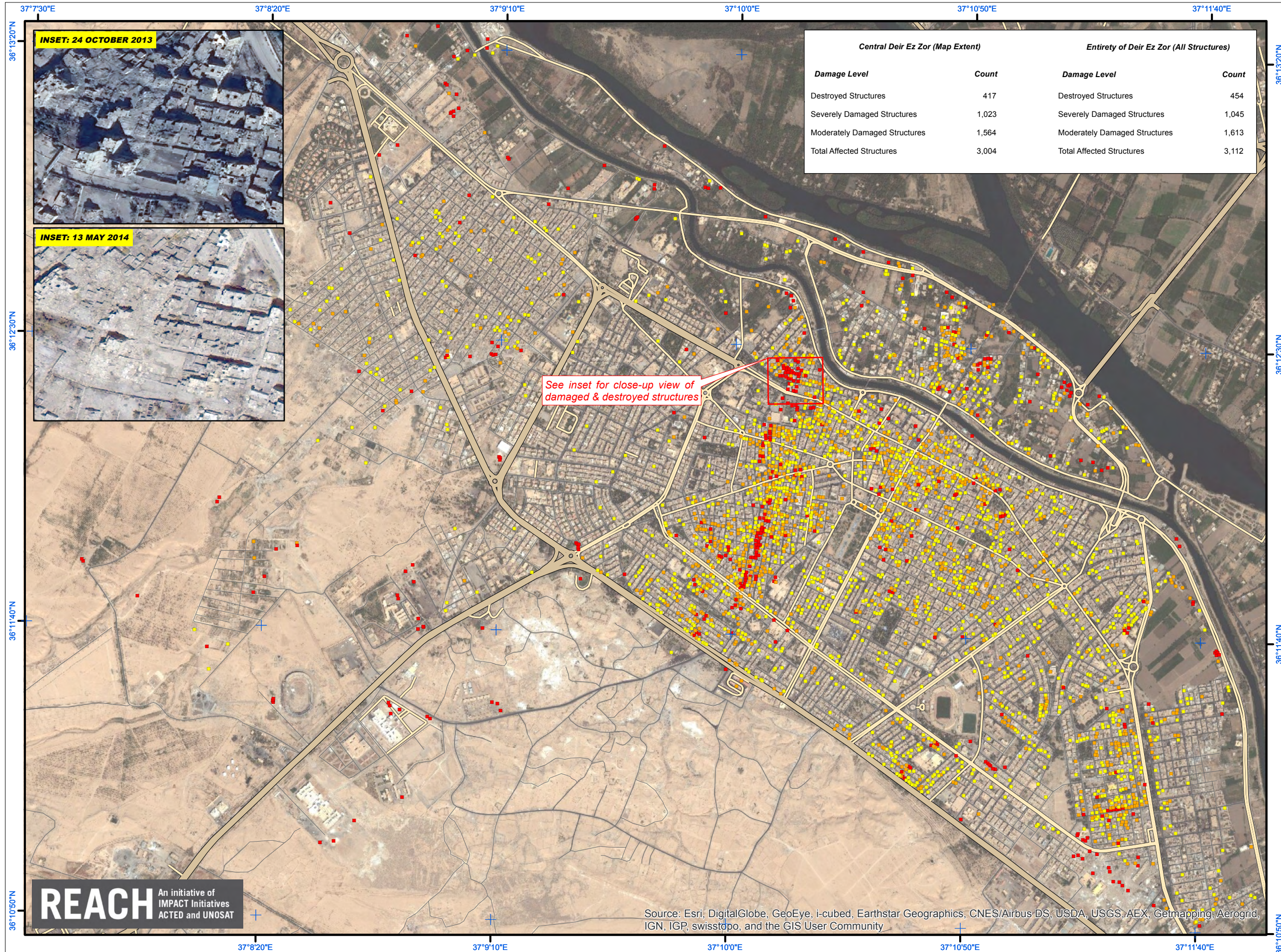
**Complex Emergency**



Production Date: 11/6/2014

Version 1.0

Activation Number: CE20130604SYR



Central Deir Ez Zor (Map Extent)		Entirety of Deir Ez Zor (All Structures)	
Damage Level	Count	Damage Level	Count
Destroyed Structures	417	Destroyed Structures	454
Severely Damaged Structures	1,023	Severely Damaged Structures	1,045
Moderately Damaged Structures	1,564	Moderately Damaged Structures	1,613
<b>Total Affected Structures</b>	<b>3,004</b>	<b>Total Affected Structures</b>	<b>3,112</b>



**LEGEND**

- Destroyed Structure
- Severely Damaged Structure
- Moderately Damaged Structure
- Highway / Primary Road
- Secondary Road
- Local / Urban Road

**Map Scale for A3: 1:4,795**

Satellite Data (1): Pleiades  
 Imagery Dates: 13 May 2014 & 24 October 2013  
 Resolution: 50 cm  
 Copyright: CNES 2014, Distribution Airbus Defense and Space  
 Source: Airbus Defense and Space  
 Satellite Data (2): WorldView-1  
 Imagery Date: 06 December 2010  
 Resolution: 50 cm  
 Copyright: DigitalGlobe  
 Source: European Space Imaging  
 Road Data: Google Map Maker / OSM / ESRI  
 Other Data: USGS, UNCS, NASA, NGA  
 Analysis: UNITAR / UNOSAT  
 Production: UNITAR / UNOSAT  
 Analysis conducted with ArcGIS v10.2

Coordinate System: WGS 1984 UTM Zone 37N  
 Projection: Transverse Mercator  
 Datum: WGS 1984  
 Units: Meter

The depiction and use of boundaries, geographic names and related data shown here are not warranted to be error-free nor do they imply official endorsement or acceptance by the United Nations. UNOSAT is a program of the United Nations Institute for Training and Research (UNITAR), providing satellite imagery and related geographic information, research and analysis to UN humanitarian and development agencies and their implementing partners.

This work by UNITAR/UNOSAT is licensed under a Creative Commons Attribution-NonCommercial-ShareAlike 3.0 Unported License.



Source: Esri, DigitalGlobe, GeoEye, i-cubed, Earthstar Geographics, CNES/Airbus DS, USDA, USGS, AEX, Getmapping, Aerogrid, IGN, IGP, swisstopo, and the GIS User Community

Contact Information: [unosat@unitar.org](mailto:unosat@unitar.org)  
 24/7 Hotline: +41 76 487 4998  
[www.unitar.org/unosat](http://www.unitar.org/unosat)