

# UPDATE: IDP CAMP IN UNMISS MALAKAL BASE, MALAKAL, SOUTH SUDAN

Analysis with WorldView-1 Data Acquired 17 February 2014 and WorldView-2 Data Acquired 18 January 2014 and 21 April 2014

**Complex  
Emergency**

Production Date:  
19-May-14

Version 1.0

Activation Number:  
CE20131218SSD

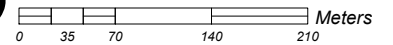


This map illustrates satellite-detected areas of IDPs evolution in the UNMISS base at Malakal as seen by the WorldView-2 and WorldView-1 satellites between 06 December and 21 April 2014. Fleeing outbreaks of violence, a portion of the UNMISS compound was in use by IDPs, occupying more than 8.3 ha as of 18 January 2014. Imagery acquired on 17 February shows that the IDP camp extent has increased compared with the previous UNOSAT analysis and the total area of IDPs occupies 11.1 ha. Imagery acquired 21 April shows that the total IDPs area occupies 12.3 ha. Imagery also shows probable IDP related structures are being installed outside the UNMISS base entrance. Note that IDP occupied areas include improvised shelters and, in some cases, administrative support and other structures. Moreover, it seems a possible extension of 28 ha of the UNMISS Base is planned. This is a preliminary analysis and has not yet been validated in the field. Please send ground feedback to UNITAR / UNOSAT.

## LEGEND

- UNMISS Base Boundary (approx.)
- Secondary Road
- Trail
- UNMISS Base Possible extension
- IDP Settlement Extent (18 January 2014)
- IDP Settlement Extent (17 February 2014)
- IDP Settlement Extent (21 April 2014)

## Map Scale for A3: 1:5,500



Satellite Data (1): WorldView-2  
Imagery Dates: 21 April 2014  
Resolution: 50 cm  
Copyright: DigitalGlobe  
Source: US Department of State, Humanitarian Information Unit, NextView License  
Satellite Data (2): WorldView-1  
Imagery Dates: 17 February 2014  
Resolution: 50 cm  
Copyright: DigitalGlobe  
Source: US Department of State, Humanitarian Information Unit, NextView License  
Satellite Data (3): WorldView-2  
Imagery Dates: 18 January 2014  
Resolution: 50 cm  
Copyright: DigitalGlobe  
Source: US Department of State, Humanitarian Information Unit, NextView License  
Satellite Data (3): WorldView-2  
Imagery Dates: 6 December 2013  
Resolution: 50 cm  
Copyright: DigitalGlobe  
Source: US Department of State, Humanitarian Information Unit, NextView License

Road Data : Google Map Maker / OSM / ESRI  
Other Data: USGS, UNCS, NASA, NGA  
Analysis : UNITAR / UNOSAT  
Production: UNITAR / UNOSAT  
Analysis conducted with ArcGIS v10.1

Coordinate System: WGS 1984 UTM Zone 36N  
Projection: Transverse Mercator  
Datum: WGS 1984  
Units: Meter

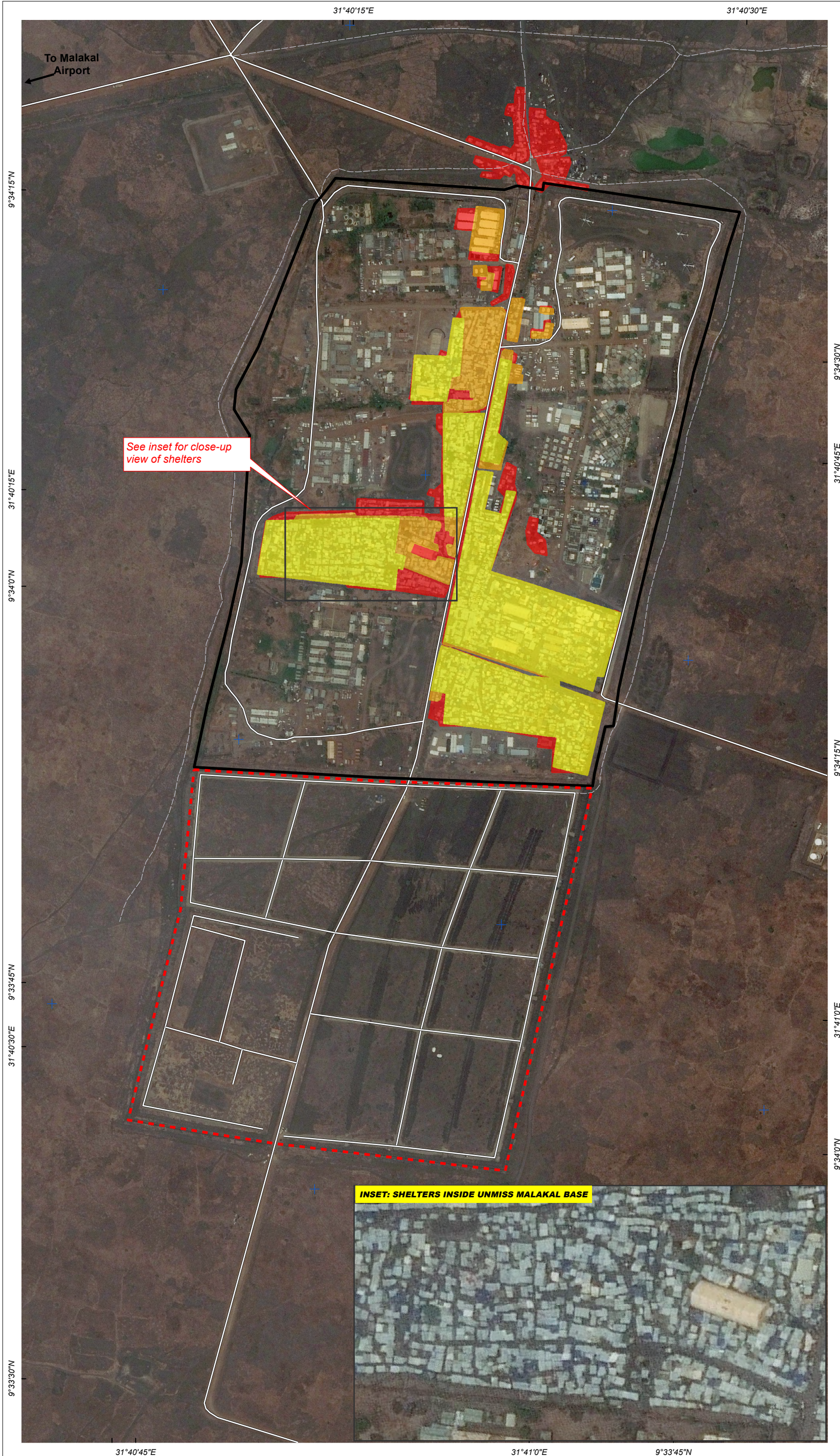
The depiction and use of boundaries, geographic names and related data shown here are not warranted to be error-free nor do they imply official endorsement or acceptance by the United Nations. UNOSAT is a program of the United Nations Institute for Training and Research (UNITAR), providing satellite imagery and related geographic information, research and analysis to UN humanitarian and development agencies and their implementing partners.

This work by UNITAR/UNOSAT is licensed under a Creative Commons Attribution-NonCommercial-ShareAlike 3.0 Unported License



# UNOSAT

Contact Information: [unosat@unitar.org](mailto:unosat@unitar.org)  
24/7 Hotline: +41 76 487 4998  
[www.unitar.org/unosat](http://www.unitar.org/unosat)



INSET: SHELTERS INSIDE UNMISS MALAKAL BASE

