



CIVILIAN POPULATION AT RISK: LOCATION 1

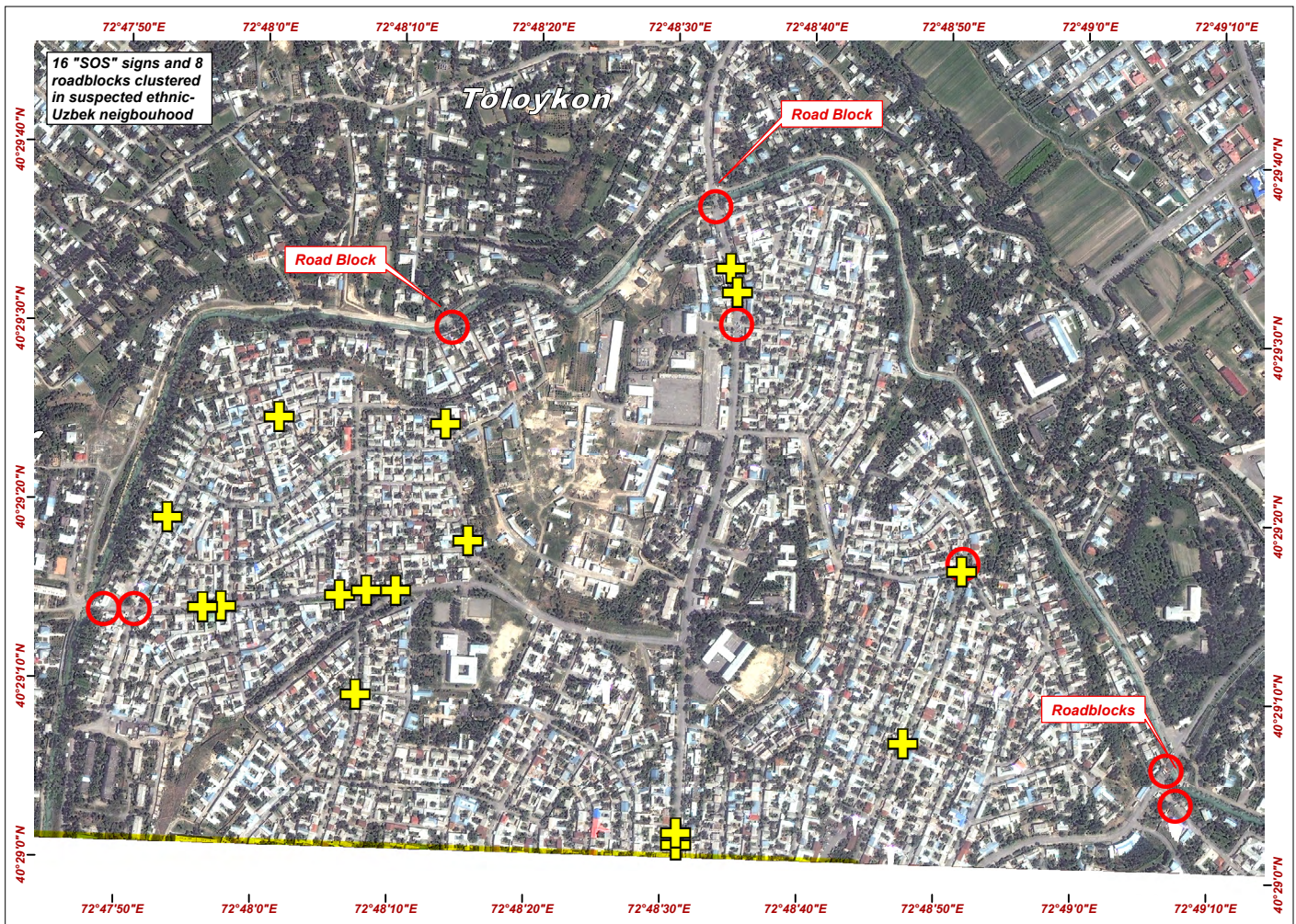
SATELLITE-DETECTED ROADBLOCKS AND "SOS" SIGNS SUGGEST PROBABLE ETHNIC-UZBEK NEIGHBORHOOD IN DISTRESS - APPROXIMATE LOCATION BETWEEN UCHAR AND TOLOYKON (TULEYKEN) AREAS, SOUTHERN OSH, KYRGYZSTAN

Based on a detailed review of crisis satellite imagery acquired the morning of 18 June 2010, there is compelling evidence to suggest that there are several ethnic-Uzbek neighborhoods within the city of Osh that are potentially still heavily populated and relatively undamaged by the reported arson attacks. These distressed neighborhoods have been identified by the presence of multiple road blocks at main road and bridge entry points, as well as the presence of multiple "SOS" signs painted on interior roads within clearly defined residential areas. In most of these identified neighborhoods, a significant majority of buildings appear to be undamaged and thus could still provide shelter to potentially thousands of local residents. Within the suspected ethnic-Uzbek neighborhood identified in this emergency report as Location 1 (see map

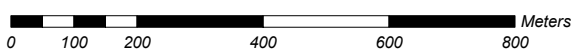
below), there are sixteen "SOS" signs, and eight roadblocks. The roadblocks are situated on main roads and bridges which cross the small river running along the northern boundary of the neighborhood. The approximate location of this neighborhood is west of the Osh River, between the urban areas of Uchar and Toloikon (Tuleyken) in southern Osh. This crisis assessment was produced in direct support of international and local emergency staff on the ground in Osh, with the understanding that the assessment conclusions are based exclusively on satellite imagery analysis with an associated moderate degree of uncertainty, and have not yet been validated on the ground. Please send additions / corrections to UNITAR / UNOSAT at emergencymapping@unosat.org.



Over 50 "SOS" signs have been identified across Osh, some with lettering as large as 5 meters in height.



Map Scale for A4: 1:12,000



"SOS" Distress Signs

Roadblocks



UNOSAT / UNITAR
Palais des Nations,
Geneva, Switzerland
T: +41 22 767 4020 (UNOSAT Operations)
24/7 hotline: +41 76 487 4998
E-mail: emergencymapping@unosat.org
www.unosat.org

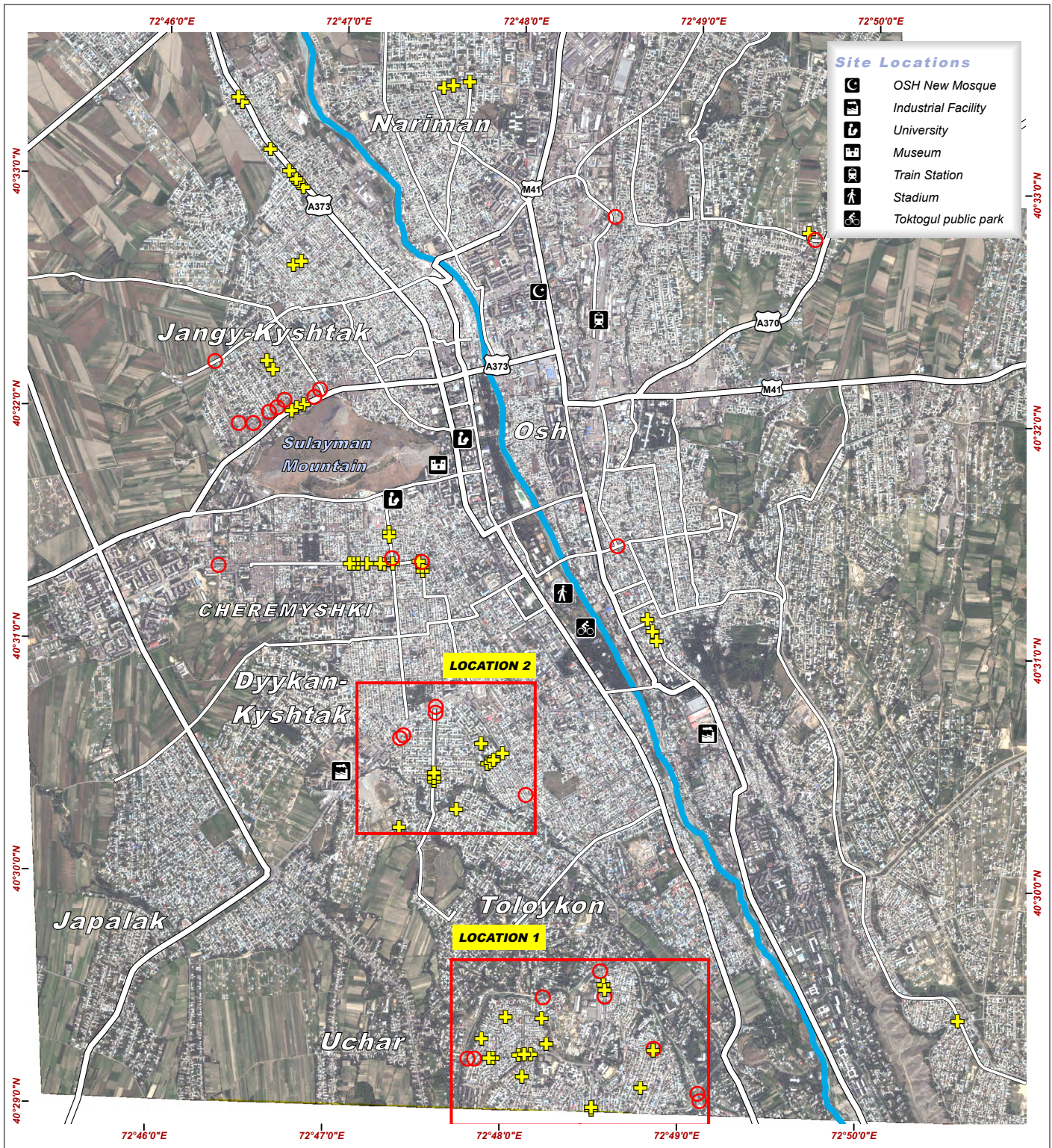
The depiction and use of boundaries, geographic names and related data shown here are not warranted to be error-free nor do they imply official endorsement or acceptance by the United Nations. UNOSAT is a program of the United Nations Institute for Training and Research

(UNITAR), providing satellite imagery and related geographic information, research and analysis to UN humanitarian & development agencies & their implementing partners.

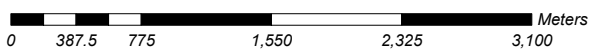
Satellite Imagery QuickBird 02
Resolution 60cm
Imagery Date 18 June 2010
Source Eurimage S.p.A.
Copyright DigitalGlobe 2010
Fire Data MODIS Aqua - Terra
Fire Processing U. of Maryland, NASA
Fire Dates 9 - 14 June 2010
Elevation Data Aster GDEM
Source METI & NASA 2009
Admin. Data OCHA
Road & City Data Google MapMaker
Report Analysis UNITAR / UNOSAT
Report Production UNITAR / UNOSAT
Projection UTM Zone 43N
Datum WGS-84



OVERVIEW MAP OF SATELLITE-IDENTIFIED PROBABLE DISTRESSED ETHNIC-UZBEK NEIGHBORHOODS WITHIN OSH



Map Scale for A4: 1:45,000



"SOS" Distress Signs

Roadblocks



UNOSAT / UNITAR
Palais des Nations,
Geneva, Switzerland
T: +41 22 767 4020 (UNOSAT Operations)
24/7 hotline: +41 76 487 4998
E-mail: emergencymapping@unosat.org
www.unosat.org

The depiction and use of boundaries, geographic names and related data shown here are not warranted to be error-free nor do they imply official endorsement or acceptance by the United Nations. UNOSAT is a program of the United Nations Institute for Training and Research

(UNITAR), providing satellite imagery and related geographic information, research and analysis to UN humanitarian & development agencies & their implementing partners.

Satellite Imagery QuickBird 02
Resolution 60cm
Imagery Date 18 June 2010
Source Eurimage S.p.A.
Copyright DigitalGlobe 2010
Fire Data MODIS Aqua - Terra
Fire Processing U. of Maryland, NASA
Fire Dates 9 - 14 June 2010
Elevation Data Aster GDEM
Source METI & NASA 2009
Admin. Data OCHA
Road & City Data Google MapMaker
Report Analysis UNITAR / UNOSAT
Report Production UNITAR / UNOSAT
Projection UTM Zone 43N
Datum WGS-84