

IDP SETTLEMENT IN WEST GETI, PROVINCE ORIENTALE, DEMOCRATIC REPUBLIC OF CONGO

Analysis with WorldView-02 Data Acquired 04 February 2014 and WorldView-1 Data Acquired 03 January 2010

This map illustrates structural changes within the West of the town of Geti in Province Orientale, DRC occurring between 3 January 2010 and 04 February 2014 as seen in satellite imagery collected by the WorldView-1 and WorldView-2 satellites respectively. During this period there was multiple new structures appeared in the area analyzed including tent shelters as well as more permanent housing. These increases in structures are most likely due to influxes of large numbers of IDPs from surrounding areas gathering in Geti. This is a preliminary analysis and has not yet been validated in the field. Please send ground feedback to UNITAR / UNOSAT.

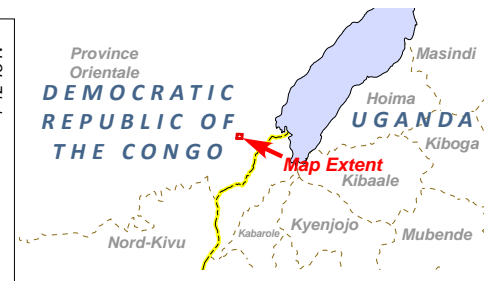
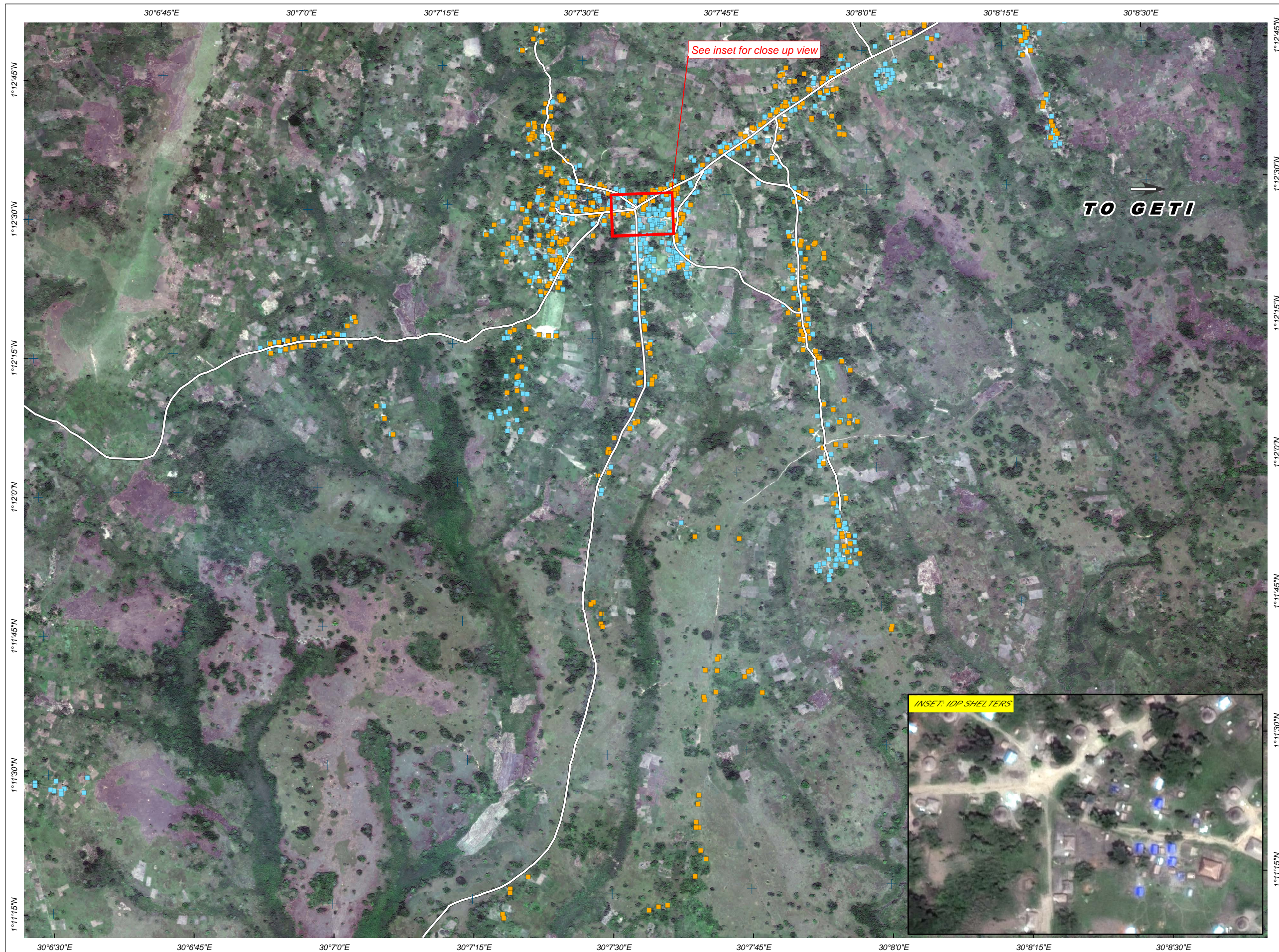
IDP Settlement



Production Date: 03/06/2014

Version 1.0

Activation Number CE20131107COD



LEGEND

- Shelters observed (03 January 2010)
- Shelters observed (04 February 2014)
- Road

Map Scale for A3: 1:12,500

Satellite Data (1): WorldView-02
 Imagery Dates (1): 04 February 2014
 Resolution: 50cm
 Copyright: DigitalGlobe Inc.
 Source: US Department of State, Humanitarian Information Unit, NextView License
 Satellite Data (2): WorldView-01
 Imagery Dates (2): 03 January 2010
 Resolution: 50cm
 Copyright: DigitalGlobe Inc.
 Source: US Department of State, Humanitarian Information Unit, NextView License
 Road Data : OSM
 Other Data : USGS, UNCS, NASA, NGA
 Analysis : UNITAR / UNOSAT
 Production: UNITAR / UNOSAT
 Analysis conducted with ArcGIS v10.1

Coordinate System: WGS 1984 UTM Zone 35N
 Projection: Transverse Mercator
 Datum: WGS 1984
 Units: Meter

The depiction and use of boundaries, geographic names and related data shown here are not warranted to be error-free nor do they imply official endorsement or acceptance by the United Nations. UNOSAT is a program of the United Nations Institute for Training and Research (UNITAR), providing satellite imagery and related geographic information, research and analysis to UN humanitarian and development agencies and their implementing partners.

This work by UNITAR/UNOSAT is licensed under a Creative Commons Attribution-NonCommercial-ShareAlike 3.0 Unported License.



UNOSAT

Contact Information: unosat@unitar.org
 24/7 Hotline: +41 76 487 4998
www.unitar.org/unosat