



IRAQ SITUATION

UNHCR FLASH UPDATE

14 March 2017

KEY FIGURES

224,298

Iraqis currently internally displaced from Mosul and surrounding areas since military operations to retake the city began on 17 October 2016¹

30,360

core relief item (CRIs) kits distributed to families in camps, assisting some 182,000 IDPs from Mosul and surrounding areas

7,430 family plots

currently occupied out of 12,497 family plots (for some 75,000 people) in UNHCR built camps ready to receive IDPs displaced from the Mosul corridor

3 million

IDPs since January 2014²

250,952 Iraqi refugees

hosted in countries in the region, and **14,486** Iraqis received in Al Hol camp in Syria since 17 October 2016

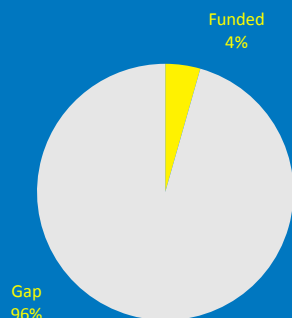
¹IOM-DTM Emergency Tracking since 17 October 2016.

²IOM-DTM as of 2 March 2017.

FUNDING

USD 578 million

requested for IDPs and Iraqi refugees in the region in 2017.



POPULATION MOVEMENTS

Over 224,298 persons are still internally displaced from Mosul and surrounding areas since the military operations began on 17 October 2016¹.

Operations to retake west Mosul began on 19 February and significant population movements started on 25 February, with around 5,000 persons received in camps daily.

In the first four months of the operations, internally displaced persons (IDPs) were almost exclusively transferred to camps, where they faced severe movement restrictions. Close to 70,000 Iraqis displaced from Mosul since 17 October returned to their places of origin mostly in order to resume work and education, which was not possible while in camps.

In a new development, large numbers of IDPs from west Mosul are now allowed to stay in the host community. Most move to east Mosul, where they have relatives. The Ministry of Migration and Displacement (MoMD) reports that at least 89,000 IDPs have fled west Mosul since 19 February. About two thirds (60,000) are sheltered in camps while a growing number is reportedly sheltered in the host community.

SITUATION UPDATE

Three weeks into the military campaign to retake west Mosul, Iraqi security forces (ISF) control close to half of west Mosul's 45 neighbourhoods. ISF is now moving [deep into west Mosul](#), surrounding Old Mosul city on three sides.

Over 80% of Mosul's infrastructure is destroyed, according to government officials.

While the Iraqi government has already approved 27 United Nations projects for the reconstruction of Mosul's retaken areas, Foreign Minister Ibrahim al-Jaafari warned [that Iraq would need a project similar to the Marshall Plan](#) (launched to rebuild Europe after World War II), in order to recover from the conflict in the country.

RESPONSE UPDATE

IDPs continue to be transferred to camps south of Mosul which are full. Although camps east and northeast of Mosul are ready to receive up to 27,400 IDPs (tented plots, services already deployed), ISF continues to transfer IDPs to camps where there is no available space. So far, about 1,100 families, or 6,000 IDPs, are sheltered in substandard conditions in camps south of Mosul. Humanitarian advocacy with ISF to discontinue such transfers is happening at all levels of the response.

Up to 15,000 IDPs arrive to Hammam Al-Alil screening site daily. An additional influx is foreseen and UNHCR is working round the clock to double the existing shelter capacity of the site to 4,000 persons, for IDPs who need to overnight.

Humanitarian actors raise concerns as IDPs are not provided with adequate information after going through screening. Once security cleared, IDPs are given the choice to go to camps or onwards, in the host community. Transportation is provided by the government. Some IDPs report not being aware of which camps have space, or their location. Families are seen grabbing in a hurry the few belongings they have, as bus drivers shout the name of the destination they are heading to. Humanitarian partners are closely working with authorities in order to disseminate timely information for IDPs to make informed decisions.

Protection partners are present at the site daily. They identify vulnerable IDPs, including separated families and unaccompanied children. An emergency referral pathway has been developed for the transit site, and ICRC has been asked to maintain a regular presence onsite for family tracing.

UNHCR needs USD 212 million in 2017, to continue providing urgent assistance to Iraqis displaced from Mosul, including USD 7 million in the next 14 days and an additional USD 30 million in the next two months – [total USD 37 million.](#)



1.2 - 1.5 million people impacted
up to 1 million displaced
700,000 in need

Protection
(Co-coordinated by UNHCR & DRC)



Shelter & NFI
(Co-coordinated by UNHCR & NRC)



Camp Coordination & Camp Management
(Co-coordinated by UNHCR & IOM)

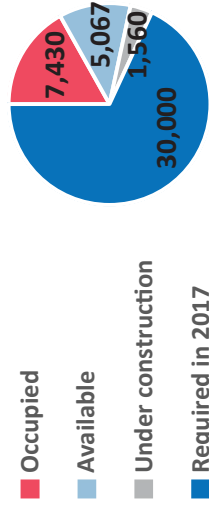


224,298 displaced since 17 October



Camp/Site Plots

44,000



Targets:



60,000

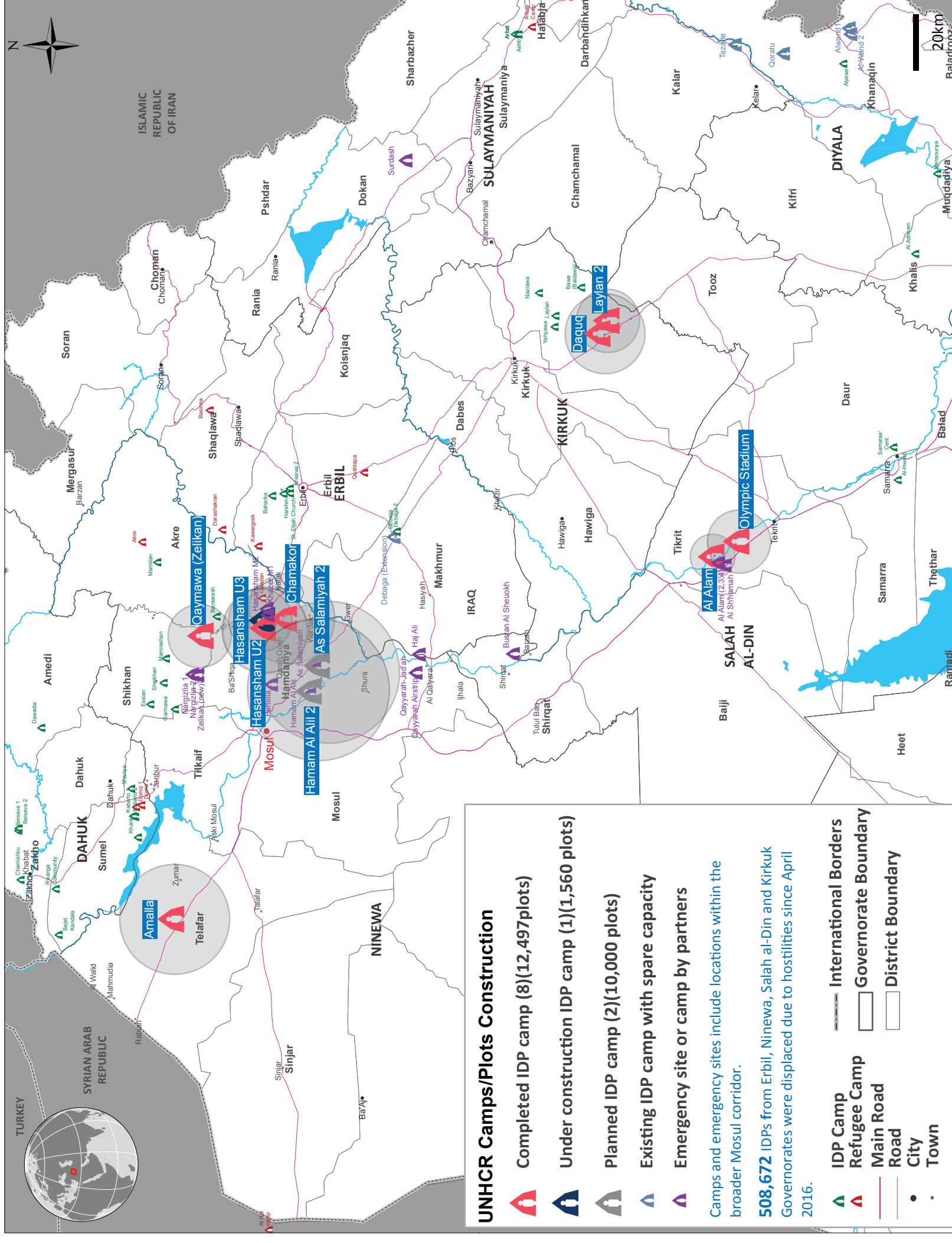
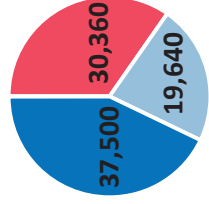


**Tents
Camps & Shelter
Alternatives**

87,500



NFI Kits



UNHCR Camps/Plots Construction

- Completed IDP camp (8)(12,497 plots)**
- Under construction IDP camp (1)(1,560 plots)**
- Planned IDP camp (2)(10,000 plots)**
- Existing IDP camp with spare capacity**
- Emergency site or camp by partners**

Camps and emergency sites include locations within the broader Mosul corridor.

508,672 IDPs from Erbil, Ninewa, Salah al-Din and Kirkuk Governorates were displaced due to hostilities since April 2016.

- IDP Camp**
- Refugee Camp**
- Main Road**
- Road**
- City**
- Town**
- International Borders**
- Governorate Boundary**
- District Boundary**

UNHCR Protection Monitoring for Mosul Response

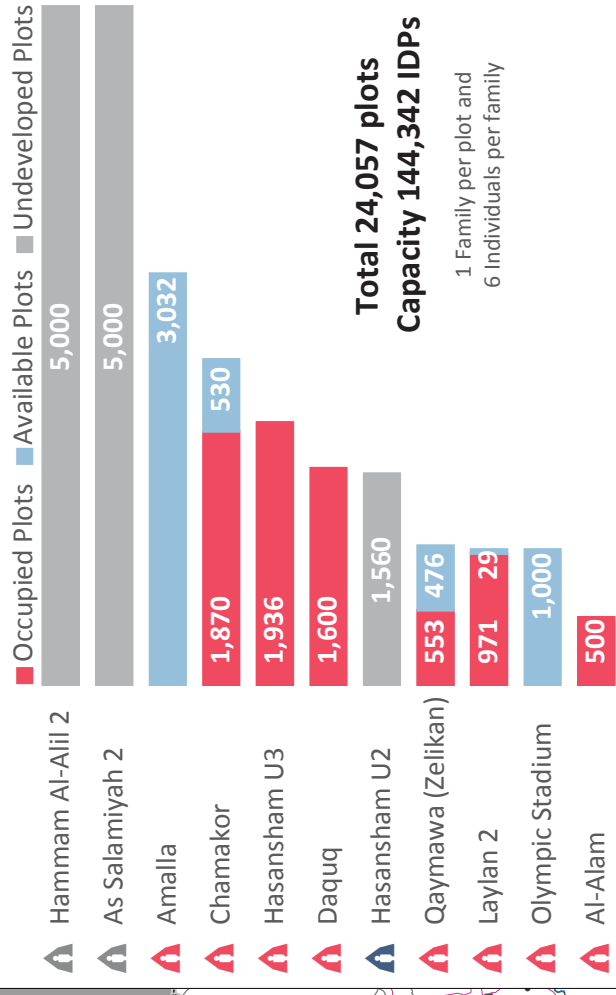
14,491 HHs Assessed

74,741 Individuals



20,759 **21,404** **17,215** **15,758**

Plots in UNHCR Constructed Camps



Total 24,057 plots
Capacity 144,342 IDPs

1 Family per plot and
6 Individuals per family

Another 2,994 plots are also available in Qoratu (UNHCR)(647 plots), Alwand2 (UNHCR)(101 plots), Surdash (MoDM)(400 plots), Tazade (MoDM)(396 plots), Alwand1 (MoDM)(750 plots) and Debag Extension (Emirates Red Crescent)(700 plots) IDP camps.

UNHCR Funding Requirements



USD 212 million

required in 2017 for Mosul
emergency response